



-  *WinEPS Release Notes*
-  *Version 825.3 SP1*
- 
- 
- 

## WinEPS Release Notes

<b>Date of Issue</b>	<b>Product Identification Number</b>	<b>Part Number</b>	<b>Brief Description</b>
October 2005	45001/096	89000261	815.3 SP1
Others: 89000303, 89000310, 89000388, 89000389, 89000390			
November 2007	45001/096	89000407	823 SP1
January 2008	45001/096	89000414	823 SP2
March 2008	45001/096	89000430	824 SP1
July 2008	45001/096	89000459	825.0 SP2
May 2009	45001/096	89000512	825.1 SP4
February 2010	45001/096	89000512	825.3 SP1

**© Copyright StoreNext Retail Technologies LLC 1995-2010  
All rights reserved**

This publication is protected by federal copyright law. No part of this publication may be reproduced or transmitted into any human or computer language in any form or by any means, stored in a retrieval system, transmitted, redistributed, translated or disclosed to third parties, or de-compiled in any way including, but not limited to, photocopy, photograph, electronic, mechanical, magnetic or manual without the express written permission of StoreNext Retail Technologies LLC or its licensors, if any. This document, notwithstanding the above, may be distributed in electronic or printed form to personnel who are employed by either (1) a StoreNext customer of the subject system of this document or (2) personnel from an authorized StoreNext dealer of the subject system of this document. All copies, so distributed and/or so authorized, shall contain a full copy of this copyright notice.

StoreNext Retail Technologies LLC endeavors to ensure that the information in this document is correct and fairly stated but does not accept liability for any error or omission. StoreNext Retail Technologies LLC makes no representation or warranties with respect to the contents hereof, and specifically disclaims any implied warranties of merchantability or fitness for a particular purpose or non-infringement. No commitments by StoreNext or its suppliers are made from this documentation which is provided for information only.

Development of StoreNext products and documentation is continuous: StoreNext Retail Technologies LLC reserves the right to revise this publication and to make changes from time to time in the contents hereof or in the products herein described or discussed without notice and without any obligation of StoreNext Retail Technologies LLC to notify any person or organization of such revision or changes. Information published in this document will likely become obsolete over time and it is recommended that users regularly check for updates and newer versions.

StoreNext Retail Technologies LLC has prepared this manual for use by users, authorized third parties and personnel of StoreNext Retail Technologies LLC as a guide to the proper installation, operation, customization and/or maintenance of StoreNext Retail Technologies LLC equipment and software. The drawings and specifications contained herein are the property of StoreNext Retail Technologies LLC and/or its licensors.

Third-party products, services, or company names referenced in this document may be trademarked or copyrighted by their respective owners, and are for identification purposes only.

Copyrights, trademarks and license agreements shall be governed and construed in accordance with the laws of the State of Texas and the Federal Arbitration Act, and shall benefit Retailix, its successors, and assigns.

Address comments and corrections to:

**StoreNext Retail Technologies LLC, Software Program Director  
6100 Tennyson Parkway / Suite 130 / Plano, Texas 75024**

## Table of Contents

<b>SECTION 1 .....</b>	<b>1</b>
<b>825.2 SP 1 Information.....</b>	<b>1</b>
<b>Minimum System Requirements .....</b>	<b>1</b>
Hardware Requirements for WinEPS and OpenEPS.....	1
Software Requirements for WinEPS .....	2
Software Requirements for OpenEPS (Front POS Lanes): .....	2
PCI Compliance and Operating Systems .....	2
Unsupported Systems .....	2
<b>Code Versions .....</b>	<b>4</b>
WinEPS Versions: .....	4
OpenEPS Versions:.....	4
OpenIP Versions:.....	4
Terminal Code Versions: .....	4
Stand Beside Code Versions:.....	4
<b>Known Issues .....</b>	<b>5</b>
Decommission full card number functions.....	5
Move Signature Capture TAC after Send Transaction.....	5
Installation Aborts Upgrade if Stand Beside Lanes are Defined .....	5
Scanmaster Does Not Support Void Declines.....	5
<b>WinEPS Fixed Issues and Enhancements .....</b>	<b>6</b>
<b>OpenEPS Changes .....</b>	<b>12</b>
<b>OpenIP Changes .....</b>	<b>15</b>
<b>Term Handler Changes.....</b>	<b>16</b>
<b>Host Changes.....</b>	<b>17</b>
ACI.....	17
Albertsons.....	17
Ascendent.....	17
BioPay.....	18
Chase.....	18
Concord: EPC.....	18
Concord: H&C Format .....	18
Concord: Memphis.....	19
Demo .....	19
Elavon (was NOVA).....	20
ePicTranz.....	20
LML.....	21
Lynk .....	22
LX1 & LX2 (Check) Hosts.....	22
Mainsail.....	22
Mercury.....	22
MPS (Fifth Third) .....	23
MTX Receipt Capture Host.....	23
Paypoint.....	23
Pay by Touch.....	24
ServerEPS (Native Format) .....	24
Shared (BigY) .....	24
<b>Terminal Code Changes.....</b>	<b>25</b>
Hypercom ICE5500 .....	25
Hypercom ICE6000 .....	25
Hypercom L4100 .....	25
Hypercom L4150 .....	25
Hypercom L4250 .....	26

## Preface

Ingenico eN-Crypt 2100.....	26
Ingenico eN-Touch 1000 .....	26
Ingenico 6550 .....	26
IVI C2000 Protégé .....	26
NCR 5993 .....	27
Verifone Everest .....	27
Verifone MX830/MX850/MX860/MX870.....	27
Verifone Omni 490 .....	28
Verifone Omni 7000.....	28
VeriFone Vx670 .....	28
<b>Stand Beside Code Changes .....</b>	<b>29</b>
Verifone Vx570 .....	29
485 LAN Stand Beside .....	29
<b>External Program Changes.....</b>	<b>30</b>
Engine Monitor and Tray Icon .....	30
OMNI 7000 Scanmaster Code .....	30
Redundancy Service.....	30
UpdateXMLFiles.Exe .....	30
Virtual Terminal 2.....	31
<b>SECTION 2 .....</b>	<b>32</b>
<b>New Features .....</b>	<b>32</b>
<b>New LML Host Updates .....</b>	<b>32</b>
LML Host Processor Definition Screen.....	32
LM2 Host Processor Definition Screen.....	34
LML Supported Transaction Types .....	36
LML Supported Encryption Types .....	36
LML Additional Information.....	37

# Section 1

---

## 825.3 SP1 Information

This section covers changes, bug fixes, and enhancements to the 825.3 SP1 release of WinEPS. The items listed below are the changes made only since the previous major release. Previous editions of the WinEPS Release Notes are located on the WinEPS installation CD, in the directory Documents/Old Release Notes, or contact WinEPS support for a copy.

### Minimum System Requirements

If the minimum requirements for the operating system you are using are higher than what is listed below, use those requirements instead.

#### Hardware Requirements for WinEPS and OpenEPS

- Pentium III (Intel or compatible) 500 MHz processor (1 GHz or faster recommended)
- 256 MB of RAM (512 MB or more recommended)
- VGA, or higher, resolution monitor set at 800 x 600 or better
- CD-ROM drive for software installation
- Ethernet Card
- Drive Space Requirement for WinEPS server:
  - 600 MB of available hard disk space on the WinEPS server (1.5 Gb of drive space is recommended). WinEPS requires approximately 300 Mb of space to install to; in addition a busy store can generate up to 10 Mb of log files per day. The default of 30 days storage can use up to 300 Mb of extra space resulting in the minimum requirement of 600 Mb of drive space.
    - 30 Days of log retention requires a total of 600 Mb free Hard Drive space.
    - 60 Days of log retention requires a total of 900 Mb free Hard Drive space.
    - 90 Days of log retention requires a total of 1.2 Gb free Hard Drive space.
- Drive Space Requirement for OpenEPS on each POS lane:
  - 100 Mb free drive space for configuration files and logs

## Software Requirements for WinEPS

- TCP/IP, FTP and FTPS Protocols
- Any of the following Operating Systems:
  - Microsoft Vista SP1
  - Microsoft Windows XP SP2, Professional
  - Microsoft Server 2000/2003 SP 1
  - Microsoft Windows 2000, SP 4



**WinEPS upgrades require a minimum starting version of 815.3.** If you have a currently installed version of WinEPS older than Version 815.3, it must first be upgraded to 815.3 using previously available upgrade installations. Instead of upgrading a version prior to 815.3, it is highly recommended to make a backup of your WinEPS, perform a new installation, and configure your new version from scratch.

## Software Requirements for OpenEPS (Front POS Lanes):

- TCP/IP, FTP and FTPS Protocols
- Any of the following Operating Systems:
  - Microsoft Vista SP1
  - Microsoft Windows XP SP2, Professional
  - Microsoft Server 2000/2003 SP 1
  - Microsoft Windows 2000, SP 4
  - Windows XP Embedded
  - WePOS
  - Linux [These versions only]: Red Hat version 2.4.7-10; Fedora version 2.4.20

Under Windows Vista, non-administrative users may not stop or start services; the Stop and Start buttons in WinEPS will be grayed out if you are logged in to Windows on as a non-administrative Windows user.

## PCI Compliance and Operating Systems

PCI requires that the security patches for software in the payments environment be tested and installed in a timely fashion. Several Microsoft operating systems have past their supported security update lifespan, and no additional security patches will be released. These operating systems include Windows NT 4.0 and Windows 95/98.

Due to the vulnerability that a lack of security patches represents, these operating systems are no longer supported for use with the WinEPS/OpenEPS product suite. Only the operating systems listed under the [Software Requirements](#) section above are supported.

Refer to information at <http://support.microsoft.com/> for the most up to date security related articles and end of support dates for all Microsoft operating systems.

## Unsupported Systems

The following operating systems and hardware are not supported:

- Windows NT 4.0 is no longer supported (See PCI compliance section above)
- Windows Win95/Win98 is no longer supported (See PCI compliance section above)
- WinEPS will not function on non NT-based Windows versions, such as Windows ME.
- XP Home version is **not** supported due to its limited scope.

- 64 bit operating systems and processors are not currently supported; these are being researched for future support options.

## Code Versions

### WinEPS Versions:

Module	Version
EPSEngineSrv.Exe	825.3.0.283
EPSTMenu.Exe	825.3.1.350
Rpt.Exe	825.3.0.293

### OpenEPS Versions:

Module	Version	Date
mtx_eps.dll	825.3.0.672	1/5/2010
mtx_pos.dll	825.3.0.2	5/19/2009
libmtx_eps.so	825.3.0.62	10/21/2009
libmtx_pos.so	825.2.0.44	3/31/2009

### OpenIP Versions:

Module	Version
OpenIPSRV.exe	825.2.0.60
TermHandlerSTSSrv.exe	825.2.0.49

### Terminal Code Versions:

Type	Terminal	Version	Date
SCAT / Script / Terminal Code	C2000	32	1/5/2005
	eN-Crypt 2100	2.40	6/4/2008
	eN-Touch 1000	06.06	1/20/2003
	Everest	49	9/5/2008
	HYP 4100	331	2/13/2009
	HYP 4150	331	1/27/2009
	HYP L4250	331	2/13/2009
	ICE 5500	120	12/10/2007
	ICE 6000	120	12/10/2007
	Mx830/850/870	221E	8/6/2008
	Mx860	221E	8/6/2008
	NCR 5993	13	2/8/2007
	Omni 490	64	12/10/2007
	Omni 7000	54	2/25/2009
	VX670	17	3/12/2008

### Stand Beside Code Versions:

Type	Terminal	Version	Date
Stand Beside	Verifone Omni 3750 (No longer PED Compliant)	25	1/31/2008
	VX570 (Replaces the Omni 3750)	25	2/1/2008

## Known Issues

### **Decommission full card number functions**

To increase data security, several OpenEPS functions dealing with retrieving track data have been modified to supply only masked data.

Get\_Track1Data truncates all but the last 4 digits of the PAN.

Get\_Track2Data truncates all but the first 6, last 4 of the PAN.

Get\_ExpirationDate returns \*\*\*\* or all truncated

As some POS systems still require access to the card number, the PAN will remain available through the PersonalAccountNumber function. Get\_PersonalAccountNumber will return the full card PAN in unmasked format. It is recommended that POS systems that do not require the full card number not use the Get\_PersonalAccountNumber and instead use one of either Get\_Track2DataMasked or Get\_PersonalAccountNumberMasked functions.

### **Move Signature Capture TAC after Send Transaction**

The signature capture TAC is now moved to the end of the sequence regardless of where it is placed. Previously the placement of the TAC ahead of the Send Transaction TAC caused the customer to be prompted for their signature early.

This is a currently required revision; for any questions about this revision, please contact the MTXEPS, Inc. Sales department.

### **Installation Aborts Upgrade if Stand Beside Lanes are Defined**

As the latest version of WinEPS does not support Stand Beside lanes, if an upgrade installation is attempted on a version of WinEPS that has Stand Beside lanes defined, the installation will abort with a notice.

If the installation aborts, and an upgrade is desired, then stand beside lanes will have to be removed from the current installation. The user should log into WinEPS, go to the Site Information | Lane Definition page and delete all lanes defined as stand beside (Terminal Types of 01 and 03).

Installations that are run silently will not receive the notice that the installation has aborted, so it is recommended that installers review the MTXInstLog.txt (located in the root of the drive on which WinEPS is installed) to determine if the installation was successful.

### **Scanmaster Does Not Support Void Declines**

WinEPS has been updated to support the use of the void flag in the Scanmaster EPI interface; however, the Scanmaster POS does not acknowledge declines of void transactions. Therefore it is highly recommended that the POS be set up such that voids are not allowed.

## WinEPS Fixed Issues and Enhancements

Enhancement	Description
1. Windows Vista Support	<ul style="list-style-type: none"> <li>• Enhancement</li> <li>• WinEPS now supports the Windows Vista operating system.</li> <li>• The WinEPS install must be performed by a user who is a Windows Administrator, the same as is required for all Windows installations.</li> <li>• To allow any valid WinEPS operator to log in and make changes, when WinEPS is installed into the EPS directory, the directory is set to grant all users read and write permissions. Without this setting, valid WinEPS operators would not be able to make configuration changes.</li> <li>• Under Windows Vista, non-administrative users may not stop or start services; the Stop and Start buttons in WinEPS will display an error warning if the user currently logged in does not have service control rights, such as if they are a non-administrative Windows user.</li> </ul>
2. Installation Aborts Upgrade if Stand Beside Lanes Detected	<ul style="list-style-type: none"> <li>• Enhancement</li> <li>• As the latest version of WinEPS does not support Stand Beside lanes, if an upgrade installation is attempted on a version of WinEPS that has Stand Beside lanes defined, the installation will abort with a pop up notice.</li> <li>• Installations that are run silently will not receive the notice that the installation has aborted, so it is recommended that installers review the MTXInstLog.txt (located in the root of the drive on which WinEPS is installed) to determine if the installation was successful.</li> </ul>
3. Card Specific Skip Signature Capture Option	<ul style="list-style-type: none"> <li>• Enhancement</li> <li>• The option to skip signature capture for transaction under a specified dollar amount has been moved from the Processing Options screen to the Card Processing profile to make the option card-specific.</li> <li>• The option name is now “Skip signature for transactions &lt;= \$ (Online)” and the option is now configurable separately for each different card type; each card type may have the option turned on or off, and may have a different dollar amount specified under which the signature capture will be skipped.</li> <li>• An additional option is now available to skip the signature capture process when offline as well. If this option is selected, then the signature capture will be skipped offline at the specified dollar amount, as well as online. If this option is not selected, then signatures will always be captured while running in offline mode.</li> <li>• On an upgrade from previous versions of WinEPS, the current setting and value from the original setting on the processing screen will be transferred to the Card Processing profiles for credit card payment types only.</li> </ul>
4. Freq Shopper Card # TAC revision	<ul style="list-style-type: none"> <li>• Fixed</li> <li>• The Frequent Shopper Card # TAC incorrectly listed an option to get the frequent shopper number from the terminal; this option was not functional and has been removed.</li> </ul>

Enhancement	Description
5. Add Fuel Pre-Auth/Completion to the Offline reports	<ul style="list-style-type: none"> <li>• Enhancement</li> <li>• To more accurately display the fuel transactions, declined Completion transactions have been added to the Offline Transactions – Forward Rejected report and Approved Completions have been added to the Offline Transactions – Forward Approved report.</li> <li>• Additionally any Completions that have not yet forwarded have been added to the Offline Transactions – Forward Pending.</li> </ul>
6. Speed up Auto Login	<ul style="list-style-type: none"> <li>• Enhancement</li> <li>• To increase the efficiency of the Windows Group Auto Login feature, two new options have been added to the Operators screen that allow users to set what type of Windows Group structure they are using in order for WinEPS to optimize its search method. <ul style="list-style-type: none"> <li>Support Nested Group searches (Slow) If this option is unchecked, WinEPS will not search nested groups for the user account.</li> <li>Use composite operator group rights (slow) If this option is unchecked, WinEPS will stop searching for matching groups after the first match is found, and will assign the user the rights associated with only the first found group.</li> </ul> </li> </ul>
7. Maximum Cash back option	<ul style="list-style-type: none"> <li>• Enhancement</li> <li>• The Customer Cash Back TAC has been enhanced with an option to display a maximum cash back button.</li> <li>• In the Card Processing profiles, a new option to Allow Max Cash Back Button can be configured per card type. If the Allow Max Cash Back Button option is selected then the Max cash back button will be displayed for this tender if the Max Cash back button is configured in the Customer Cash Back TAC for the tender type.</li> </ul>
8. Enhance WinEPS to store original Auth number and "Online Auth Number"	<ul style="list-style-type: none"> <li>• Enhancement</li> <li>• WinEPS has been enhanced to store both the local authorization number for offline transactions, as well as the final online approval number once the transaction is forwarded up and receives an approval. Previously the new approval number overwrote the local authorization number.</li> <li>• These values are available to be viewed in the Offline Transactions – Forward Appr/Rejected report for approved transactions.</li> </ul>

Enhancement	Description
9. SendMsg.exe Update	<ul style="list-style-type: none"> <li>• Enhancement</li> <li>• The SendMsg.exe has been updated for the latest WinEPS. Unused or inapplicable commands have been removed from the interface, and additional options have been added.</li> <li>• The following commands have been removed: Start all lanes Stop all lanes Stop lanes and close Download Lanes</li> <li>• The following options have been added: Create Log File Repeat command on Failure (from 1 to 100 times, user determined) Display Help (using the switch /?, or if SendMsg.Exe is run without any parameters).</li> </ul>
10. Support Encryption with ScanMaster V1	<ul style="list-style-type: none"> <li>• Enhancement</li> <li>• Encryption of has been implemented between Scanmaster Version 1 systems and WinEPS.</li> <li>• This encryption will encrypt the track2 data and account number (PAN) within the MTXAUTH.DAT and MTXSNF.DAT files. Previously these values were not encrypted because the data was considered to be 'in transit'; however with updated PCI regulations encryption is required.</li> </ul>
11. Move temporary report files into memory	<ul style="list-style-type: none"> <li>• Enhancement</li> <li>• To improve security, the report module will no longer temporarily write reports to the hard drive when building a requested report. This will now be down entirely in memory. It was determined that a terminated report module might leave the temporary file undeleted.</li> </ul>
12. Enhance ScanMaster EPI to support up to 99 lanes	<ul style="list-style-type: none"> <li>• Fixed</li> <li>• The Scanmaster EPI interface had a bug when customers attempted to use lanes with a lane number higher than 60; this issue has been corrected so customers may now use all available lane numbers, 1 through 99.</li> </ul>
13. Add SSL to Logging	<ul style="list-style-type: none"> <li>• Fixed</li> <li>• When using an SSL connection, the logging clearly indicated that the outgoing message was in SSL, however the incoming message did not have that indicator in the log. This has been corrected so that both incoming and outgoing messages are clearly labeled with SSL when SSL is in use.</li> </ul>
14. Blackhawk offline Activation text	<ul style="list-style-type: none"> <li>• Enhancement</li> <li>• When a Blackhawk gift card is activated while the system is in offline mode, the card itself will not be active until the host receives the offline forward. To inform the customer that there will be a delay in activating the card, a new text field has been added to the Processing Options screen.</li> <li>• The Offline Blackhawk Receipt Verbiage text field defaults to the text of "Card will be active within 24 Hours", but may be configured by the user. This field will supplied as part of the receipt text any time a Blackhawk card is activated offline.</li> </ul>

Enhancement	Description
15. Scanmaster EPI Void Flag	<ul style="list-style-type: none"> <li>• Enhancement</li> <li>• WinEPS has been updated to support the use of the void flag in the Scanmaster EPI interface; however, the Scanmaster POS does not acknowledge declines of void transactions. Therefore it is highly recommended that the POS be set up such that voids are not allowed.</li> </ul>
16. Updated License Agreement	<ul style="list-style-type: none"> <li>• Update</li> <li>• The software license text has been updated. The new text is visible when performing an installation of WinEPS or related products.</li> </ul>
17. Configure Offline Debit Network ID option	<ul style="list-style-type: none"> <li>• Enhancement</li> <li>• The Configure Offline Debit Network ID option allows a user to specify which debit networks they would like to take offline, if offline for Debit is turned on (allowed) in the card processing profile.</li> <li>• On the allowable card prefixes screen for Debit prefixes, when the new Configure Offline Debit Network IDs button is selected, a new list box appears in which network IDs may be entered.</li> <li>• Any Debit Network ID that is entered in this box will be considered available for offline processing; Debit cards from networks not listed in this box will automatically be declined for offline processing.</li> <li>• The text entered here must match exactly the Bank Name as defined in the Debit BIN Prefix Table that is currently in use.</li> <li>• If NO text is entered in the Network ID box, then this new functionality will be disabled and Debit cards will all be processed for offline based on the Card Processing Profile settings, regardless of the card's associated Bank Name/Network ID. Upgrades from previous version of WinEPS will not have any value in the Network ID box, and thus they will continue to function as before.</li> </ul>
18. Decline Cash-Only Transactions option	<ul style="list-style-type: none"> <li>• Enhancement</li> <li>• The Decline Cash-Only Transactions option has been added as a new Processing flag to the Card Processing Profile screen. When this option is selected for a card type, all transactions for that card that have a \$0 purchase amount but have a cash-back value will automatically be locally declined.</li> </ul>
19. Get Signature from POS option	<ul style="list-style-type: none"> <li>• Enhancement</li> <li>• A new option to Get Signature from POS has been added to the O - Sig Cap TAC. When this option is selected, instead of acquiring the signature data from the SCAT terminal, the POS will be prompted to supply the signature data.</li> <li>• This option is used if the POS has its own attached signature pad device.</li> </ul>
20. Multikill.exe not working on Windows Vista	<ul style="list-style-type: none"> <li>• Fixed</li> <li>• The Multikill utility was not functioning properly on the Microsoft Vista operating system. This utility has been updated to function properly.</li> </ul>

Enhancement	Description
21. Offline file logging.	<ul style="list-style-type: none"> <li>Fixed</li> <li>The logging of the offline transactions count during start up was incorrectly removed; this logging was reinstated.</li> </ul>
22. Additional Update to Discover Card Ranges	<ul style="list-style-type: none"> <li>Enhancement</li> <li>To support the new China UnionPay cards that must be routed through the Discover card network starting October 16, 2009, the following prefixes have been added as valid discover cards: 624XXXXXXXX 625XXXXXXXX 626XXXXXXXX  6282XXXXXXXX 6283XXXXXXXX 6284XXXXXXXX 6285XXXXXXXX 6286XXXXXXXX 6287XXXXXXXX 6288XXXXXXXX</li> </ul>
23. Fixed issue with simultaneous transactions	<ul style="list-style-type: none"> <li>Fixed</li> <li>Addressed an issue where if two transactions hit the engine at the exact same time, one of the transactions would be missed or skipped.</li> </ul>
24. Revised display of Offline transactions on reports	<ul style="list-style-type: none"> <li>Fixed</li> <li>Offline Pending transactions from prior days will no longer be reflected in the current day's Sales Summary reports.</li> <li>If the current day's offline transactions are declined by the host, they will no longer be removed from the store's totals in the Sales Summary reports.</li> </ul>
25. Sorting Cashiers	<ul style="list-style-type: none"> <li>Fixed</li> <li>The Sales Summary - By Cashier report was not correctly sorting cashiers by number and were instead using alpha-sorting. This has been fixed.</li> </ul>
26. Correct Support for Partial Auth on Debit transactions	<ul style="list-style-type: none"> <li>Fixed</li> <li>An issue caused the partial approval not to be sent properly on Debit; this has been fixed so that the partial auth indicator is sent correctly.</li> </ul>
27. Lane Status Message	<ul style="list-style-type: none"> <li>Fixed</li> <li>The lane status message was not being properly sent every hour; this has been updated to send the status message every hour as expected.</li> </ul>

Section 1 – 825.3 SP1 Information  
WinEPS Fixed Issues and Enhancements

Enhancement	Description
28.	•

## OpenEPS Changes

Enhancement	Description
1. Enhance AutoTender	<ul style="list-style-type: none"> <li>• Enhancement</li> <li>• Auto Tender Resolution has been enhanced so that if a card is found in multiple prefix lists, and thus may be more than one type of card, the customer is prompted with a list of only the payment types that are located instead of the entire payment list.</li> <li>• If layered tender types are used, then the list will likely be condensed as not all the tenders need to be displayed.</li> <li>•</li> <li>• Enhance AutoTender logic to only display tenders the card is found in and not the entire tender list.</li> <li>• If the card is not found in any prefix, then the entire list of tenders is shown.</li> </ul>
2. Enhance OpenEPS for Network Unavailable declines from First Data	<ul style="list-style-type: none"> <li>• Fixed</li> <li>• On network unavailable declines (NW2) from First Data where OpenEPS would try for an offline approval if offline processing is allowed, in the event that offline processing is not allowed, the original decline code and message will be displayed in order to correctly convey the correct status.</li> </ul>
3. New Data Entry Modes	<ul style="list-style-type: none"> <li>• Enhancement</li> <li>• Added two new Data Entry Modes: Yes/No and Button Selection.</li> <li>• These new Data Entry Modes are available to be called by the POS through the OpenEPS interface.</li> <li>• The Yes/No Entry Mode allows the POS to prompt for a yes or no response from the customer via the customer terminal. The Button Selection Entry Mode allows the POS to specify a 1 line caption, plus up to 4 buttons with 4 character labels, and prompt the customer for button selection.</li> </ul>
4. MTX_POS_InitDLL function	<ul style="list-style-type: none"> <li>• Enhancement</li> <li>• A new OpenEPS function call is available to POS systems that will initialize all OpenEPS offline transaction threads without requiring a complete sign on.</li> <li>• The InitDLL function may be used by the POS to initialize the offline threads in order to ensure that offline processing still occurs even if no sign on has yet occurred on the POS.</li> </ul>
5. Correct TOR Logging	<ul style="list-style-type: none"> <li>• Fixed</li> <li>• Corrected a minor issue with the log entry listing the number of times a TOR was attempted; the logging was off by one number.</li> </ul>

Enhancement	Description
6. Receipts display Balance only	<ul style="list-style-type: none"> <li>Enhancement</li> <li>The OpenEPS receipt text supplied to POS systems for transactions with a balance field has been updated. Previously OpenEPS used the approved amount and the balance amount supplied by the host to calculate the original amount on the card, and print all three fields on the receipt. This has been modified so that the original amount is no longer calculated and that the original amount is no longer supplied in the receipt text.</li> <li>For customers that prefer the original receipt text, a new OpenEPS.ini keyword has been added: "oldrec=y". When this keyword is present in the OpenEPS.ini file, OpenEPS will provide the original receipt text including the calculated amount field.</li> </ul>
7. Debit with AutoTender issue	<ul style="list-style-type: none"> <li>Fixed</li> <li>If a debit card was swiped in a location doing credit to debit conversion, and the prefix was found in the Debit BIN file, but not in the allowable card prefix list for Debit due to a miss-configuration, the transaction sequence would fail and the POS would be placed into an infinite loop. This has been corrected by providing an 'invalid card type' prompt and requesting the customer select a different tender type.</li> </ul>
8. Decommission full card number functions	<ul style="list-style-type: none"> <li>Enhancement</li> <li>To increase data security, several OpenEPS functions dealing with retrieving track data have been modified to supply only masked data. <ul style="list-style-type: none"> <li>Get_Track1Data truncates all but the last 4 digits of the PAN.</li> <li>Get_Track2Data truncates all but the first 6, last 4 of the PAN.</li> <li>Get_ExpirationDate returns **** or all truncated</li> </ul> </li> <li>As some POS systems still require access to the card number, the PAN will remain available through the PersonalAccountNumber function. Get_PersonalAccountNumber will return the full card PAN in unmasked format. It is recommended that POS systems that do not require the full card number not use the Get_PersonalAccountNumber and instead use one of either Get_Track2DataMasked or Get_PersonalAccountNumberMasked functions.</li> </ul>
9. Move slot keywords from Setup.txt to OpenEPS.ini	<ul style="list-style-type: none"> <li>Enhancement</li> <li>The following keywords were moved from being used in the Setup.Txt file to being used in the OpenEPS.Ini file: <ul style="list-style-type: none"> <li>DEBITKEYSLOT</li> <li>EBTFSKEYSLOT</li> <li>PRIVATEDEBITKEYSLOT</li> </ul> </li> <li>For backward compatibility, the keywords are still read from the Setup.Txt if they are present there and not in the OpenEPS.Ini.</li> </ul>
10. Change Receipt from "Checker" to "Cashier"	<ul style="list-style-type: none"> <li>Enhancement</li> <li>In the receipt text supplied to the POS, the word "Checker" has now been updated to "Cashier."</li> </ul>

Enhancement	Description
11. Move Sig TAC after Send Transaction	<ul style="list-style-type: none"> <li>Revision</li> <li>The signature capture TAC is now moved to the end of the sequence regardless of where it is placed. Previously the placement of the TAC ahead of the Send Transaction TAC caused the customer to be prompted for their signature early.</li> <li>This is a currently required revision; for any questions about this revision, please contact the MTXEPS, Inc. Sales department.</li> </ul>
12. Blackhawk Decline receipts list full card number	<ul style="list-style-type: none"> <li>Enhancement</li> <li>The receipt text has been enhanced to provide the full card number for any Blackhawk gift card transaction decline, as required by Blackhawk.</li> </ul>
13. Blackhawk UPC Validation on two Pass Cards	<ul style="list-style-type: none"> <li>Enhancement</li> <li>The UPC value set by the POS is now validated against the UPC value of the Track1 data obtained during the card swipe. If the UPC code does not match the transaction will be declined with an MTX-&gt;240 decline.</li> </ul>
14. Corrected timing with Gift Card Activations	<ul style="list-style-type: none"> <li>Fixed</li> <li>Corrected a timing issue with Gift Card Activations where if the gift card scanned was invalid or not found in the Gift Card Allowable Card Prefix file and then the POS set Activation within 3 seconds the error would be cleared incorrectly causing the POS to lock. OpenEPS will now set Cancel for the POS which will force a reset.</li> <li>Previously, manual entry on POS initiated EBT transactions would cause an error which would stop the transaction. This has been corrected.</li> </ul>
15. Manual EBT Issue	<ul style="list-style-type: none"> <li>Fixed</li> <li>Previously, manual entry on POS initiated EBT transactions would cause an error which would stop the transaction. This has been corrected.</li> </ul>
16. Corrected Track1DataMasked issue	<ul style="list-style-type: none"> <li>Fixed</li> <li>Corrected an issue where using the call Get_Track1DataMasked would cause the POS to crash.</li> </ul>
17. Fixed timing issue with Cashier OK Cashback	<ul style="list-style-type: none"> <li>Fixed</li> <li>Corrected an issue with Cashier OK Cashback causing an issue with the Customer OK flag being not set to the correct state which would cause a timing issue with the POS.</li> <li>This patch should be used in conjunction with NCR Patch H.</li> </ul>

## OpenIP Changes

Enhancement	Description
1. -No Change to OpenIP -	<ul style="list-style-type: none"><li data-bbox="570 394 639 415">• ---</li></ul>

## Term Handler Changes

Enhancement	Description
1. -No Change to Term Handler -	• ---

## Host Changes

### ACI

Enhancement	Description
1. ACI Check updates	<ul style="list-style-type: none"> <li>• Enhancement</li> <li>• WinEPS has been updated to pass RawMICR data on all regular checks up to the host, if RawMICR data is supplied by POS.</li> <li>• Two new options are available on the ACI host screen that allow either or both of WIC or Other type checks to be forward up to ACI for tracking and reporting purposes after they are locally approved.</li> <li>• When WIC and Other checks are forward, the POS condition code will be set to Online.</li> </ul>
2. Pass \$0 Tax Amount to host	<ul style="list-style-type: none"> <li>• Fixed</li> <li>• When the tax amount is set to zero (\$0) by the POS, OpenEPS was passing that value to WinEPS, but WinEPS is not setting that value to ACI. This has been corrected so that WinEPS passes the zero Tax amount on to the host.</li> </ul>

### Albertsons

Enhancement	Description
1. -No Change to Host -	<ul style="list-style-type: none"> <li>•</li> </ul>

### Ascendent

Enhancement	Description
1. Credit and Debit Balances	<ul style="list-style-type: none"> <li>• Enhancement</li> <li>• WinEPS has been updated to accept Credit and Debit card balances back from the Ascendant host in bit 54.</li> </ul>

## BioPay

Enhancement	Description
1. -No Change to Host -	•

## Chase

Enhancement	Description
1. -No Change to Host -	•

## Concord: EPC

Enhancement	Description
1. -No Change to Host -	•

## Concord: H&C Format

Enhancement	Description
1. Truncate Proprietary data on completions and reversals	<ul style="list-style-type: none"> <li>• Enhancement</li> <li>• The latest Concord H&amp;C spec requires that Pre-Auth Completion, Voids and TOR transactions for Credit and Debit be sent up with just the PAN and expiration date, and without the proprietary Track 2 data.</li> <li>• PIN block information is no longer required for Debit reversals, so WinEPS has been updated to no longer request a new PIN entry for Debit Voids.</li> </ul>
2. Send Partial Auth Flag if set by POS	<ul style="list-style-type: none"> <li>• Enhancement</li> <li>• The logic for setting the Partial Authorization indicator to the Concord H&amp;C host has been updated.</li> <li>• If the POS sets the Partial Authorization flag to OpenEPS, that setting will be passed along to the host in FID i; if the value is not set, then FID i will not be sent unless it is an FSA transaction, where FID i will be set to 0.</li> </ul>

Enhancement	Description
3. Support Var ID	<ul style="list-style-type: none"> <li>Enhancement</li> <li>The Concord H&amp;C host interface module has been updated to supply the Var ID field to the host in each message. The Var ID value is assigned by Concord to identify the sending application and certification version.</li> </ul>
4. Stand in Void Auth # Issue	<ul style="list-style-type: none"> <li>Fixed</li> <li>When standing in for a void of a transaction that was initially processed online, the incorrect authorization number would be assigned to the void when the void was forwarded to the host.</li> <li>This has been corrected so that the void will be sent with the original auth number supplied for the initial transaction.</li> </ul>
5. ECC reporting transit # instead of Account #	<ul style="list-style-type: none"> <li>Fixed</li> <li>Reporting and receipt printing for the ECC transactions have been corrected to show the Account Number properly instead of the Transit Number.</li> </ul>
6. AVS Spec Change	<ul style="list-style-type: none"> <li>Enhancement</li> <li>The AVS (Address Verification) functionality has been updated to support the new format in the current host specification.</li> <li>The AVS response used to be provided in the 'P' data field and was one character in length. Now it is provided in the 'V' data field and is 5 characters long.</li> </ul>

### Concord: Memphis

Enhancement	Description
1. -No Change to Host -	<ul style="list-style-type: none"> <li></li> </ul>

### Demo

Enhancement	Description
1. -No Change to Host -	<ul style="list-style-type: none"> <li></li> </ul>

## Elavon (was NOVA)

Enhancement	Description
1. Implement Visa Tran ID field	<ul style="list-style-type: none"> <li>• Enhancement</li> <li>• New functionality has been added to accept the Visa Tran ID in the 0210 Response from the Elavon host. This value will be printed automatically on all receipts for transactions going through the Elavon host.</li> <li>• This value is available to POS systems through the OpenEPS interface VisaTranID function call; see the OpenEPS specification for integration details. The POS may acquire this value in order to frank it on checks.</li> </ul>
2. Configurable Network Routing Value	<ul style="list-style-type: none"> <li>• Enhancement</li> <li>• The Network Routing Value supplied on each message to the host is now configurable on the host screen. This value defaults to "00".</li> </ul>
3. Corrected Fee amount	<ul style="list-style-type: none"> <li>• Fixed</li> <li>• Corrected an issue with the Fee amount in regards to Payroll check cashing improperly using the wrong processing code. The Fee amount will now be included in the cash back amount sent to the host so that it matches the purchase amount.</li> </ul>
4. Support Single TID with Elavon	<ul style="list-style-type: none"> <li>• Enhancement</li> <li>• The Elavon host now supports a single TID for the entire store. The previous Store ID will not work with the new single TID method; Elavon will need to provide a new TID for merchants upgrading to the latest WinEPS version.</li> <li>• For this change the Process Type was updated from G to M.</li> </ul>
5. Other Check type receipt ECC text	<ul style="list-style-type: none"> <li>• Enhancement</li> <li>• For all "Other" check type checks to Elavon the ECC text will be provided to the POS for printing.</li> </ul>

## ePicTranz

Enhancement	Description
1. -No Change to Host -	<ul style="list-style-type: none"> <li>•</li> </ul>

## LML

Enhancement	Description
1. New Tender/Transaction Types Support	<ul style="list-style-type: none"> <li>• Enhancement</li> <li>• The LML host was enhanced to support additional tenders and transaction types.</li> <li>• FSA Transactions are now supported; FSA and standard credit transactions (including prepaid credit cards) can return partial approvals.</li> <li>• Blackhawk is supported for EAN 128 UPC (single pass) cards.</li> </ul>
2. Support Zipcode/CVV2	<ul style="list-style-type: none"> <li>• Enhancement</li> <li>• Zipcode and CVV2 values are now supported by the LML host. The z – Zip Code and v – CVV2 TACs may be placed in the manual credit transaction sequence in order to prompt for these verification values.</li> </ul>
3. LML route offlines to a different address	<ul style="list-style-type: none"> <li>• Enhancement</li> <li>• A new option has been added to the LML host to allow offline transactions to be routed to a different IP address or port.</li> <li>• If the Use LM2 Host for Offline Processing option is selected, another host screen for LM2 is made available for configuration; all offlines will be processed using the configuration information on the LM2 screen instead of the LML screen. This option is mainly used in order to send the offlines to a different IP address or port than the online transactions, but also allows configuring specific timer values for just the offline transactions.</li> <li>• The new LM2 offlines host screen also has a Flood Offlines to Host setting that allows the user to specify a time range that can use a different offline timer value than the basic timer specified on the LM2 screen.</li> </ul>
4. Configurable Resubmit Timers	<ul style="list-style-type: none"> <li>• Enhancement</li> <li>• The LML and LM2 hosts have been updated to use the “Secs to wait between resubmits” setting on the host screen to determine the resubmission time for pending offline transactions instead of a hard coded value.</li> </ul>
5. Corrected \$0 balance	<ul style="list-style-type: none"> <li>• Fixed</li> <li>• Fixed the response from the host module to return \$0 balance when the response sent is equal to or greater than 0. Previously it only sent \$0 if the amount returned was greater than 0.</li> </ul>

## Lynk

Enhancement	Description
1. Revise offline support for Lynk Host	<ul style="list-style-type: none"> <li>• Enhancement</li> <li>• The Lynk host interface does not have an offline indicator. To avoid additional merchant charges from sending up an offline transaction with an auth code as if it had been previously authorized, all transactions taken offline will now be sent up to the host as standard online transactions.</li> <li>• When the host receives the offline transaction, the host will evaluate it at that time and approve or decline it.</li> </ul>

## LX1 & LX2 (Check) Hosts

Enhancement	Description
1. -No Change to Host -	<ul style="list-style-type: none"> <li>•</li> </ul>

## Mainsail

Enhancement	Description
2. -No Change to Host -	<ul style="list-style-type: none"> <li>•</li> </ul>

## Mercury

Enhancement	Description
1. -No Change to Host -	<ul style="list-style-type: none"> <li>•</li> </ul>

## MPS (Fifth Third)

Enhancement	Description
1. Revise offline support for MPS 5/3 host	<ul style="list-style-type: none"> <li>• Enhancement</li> <li>• The MPS 5/3 host interface has been updated to allow supporting true offline transactions. Previously offline transactions were forwarded up as 'Force' type transactions, which the host automatically accepted and evaluated later.</li> <li>• This change has updated all offline transactions to be sent up similarly to online transactions, but with the condition code indicator for 'offline' set. With this modification, the host will evaluate the transaction immediately, and may decline it at that point.</li> <li>• Previously EBT offline was not supported; with this change, offline EBT transactions are now supported. EBT offline transactions must be resubmitted within 24 hours from the transaction initial origination time stamp.</li> </ul>
2. Giftcard Bit Map	<ul style="list-style-type: none"> <li>• Fixed</li> <li>• Some Gift Card transactions were being sent with an incorrect bitmap. We have updated the bitmap sent for all gift cards to bitmap 80, and have updated all the gift card transactions to use that bitmap.</li> </ul>

## MTX Receipt Capture Host

Enhancement	Description
1. -No Change to Host -	<ul style="list-style-type: none"> <li>•</li> </ul>

## Paypoint

Enhancement	Description
1. -No Change to Host -	<ul style="list-style-type: none"> <li>•</li> </ul>

## Pay by Touch

Enhancement	Description
2. -No Change to Host -	<ul style="list-style-type: none"><li>•</li></ul>

## ServerEPS (Native Format)

Enhancement	Description
1. -No Change to Host -	<ul style="list-style-type: none"><li>•</li></ul>

## Shared (BigY)

Enhancement	Description
1. -No Change to Host -	<ul style="list-style-type: none"><li>•</li></ul>

## Terminal Code Changes

### Hypercom ICE5500

Enhancement	Description
1. -No Change to Terminal Code -	<ul style="list-style-type: none"> <li>• ---</li> </ul>

### Hypercom ICE6000

Enhancement	Description
2. -No Change to Terminal Code -	<ul style="list-style-type: none"> <li>• ---</li> </ul>

### Hypercom L4100

Enhancement	Description
1. -No Change to Terminal Code -	<ul style="list-style-type: none"> <li>• ---</li> </ul>

### Hypercom L4150

Enhancement	Description
1.	<ul style="list-style-type: none"> <li>•</li> </ul>

## Hypercom L4250

Enhancement	Description
1. -No Change to Terminal Code -	<ul style="list-style-type: none"> <li>• ---</li> </ul>

## Ingenico eN-Crypt 2100

Enhancement	Description
1. -No Change to Terminal Code -	<ul style="list-style-type: none"> <li>• ---</li> </ul>

## Ingenico eN-Touch 1000

Enhancement	Description
1. -No Change to Terminal Code -	<ul style="list-style-type: none"> <li>• ---</li> </ul>

## Ingenico 6550

Enhancement	Description
1. -No Change to Terminal Code -	<ul style="list-style-type: none"> <li>• ---</li> </ul>

## IVI C2000 Protégé

Enhancement	Description
1. -No Change to Terminal Code -	<ul style="list-style-type: none"> <li>• ---</li> </ul>

### NCR 5993

Enhancement	Description
1. -No Change to Terminal Code -	<ul style="list-style-type: none"> <li>• ---</li> </ul>

### Verifone Everest

Enhancement	Description
1. -No Change to Terminal Code -	<ul style="list-style-type: none"> <li>• ---</li> </ul>

### Verifone MX830/MX850/MX860/MX870

Enhancement	Description
1. Change Q request to a Q14	<ul style="list-style-type: none"> <li>• Fixed</li> <li>• Updated the Q (card slide) parameter from the previous value of Q1312 to the value Q14 listed in the latest specification.</li> </ul>
2. Set Device Clock Access Violation	<ul style="list-style-type: none"> <li>• Fixed</li> <li>• The Set Device Clock call to the MX800 series terminals was causing Access Violations that would disrupt processing. This has been corrected.</li> </ul>
3. Report version even if no screenfiles assigned	<ul style="list-style-type: none"> <li>• Fixed</li> <li>• The MX 800 terminals were not reporting their version information if no screenfiles existed in the OpenEPS directory. This issue has been corrected so that the terminals report the version info even if no screen files are assigned.</li> </ul>
4. Mx800s: power on message during 800/810 causes issues with powered serial	<ul style="list-style-type: none"> <li>• Fixed</li> <li>• Due to an issue with the restarting of the MX terminal class on powered serial ports, the power on functionality has been revised to not restart the terminal class when a power-on message is received from an MX terminal.</li> </ul>

## Verifone Omni 490

Enhancement	Description
1. Fixed track encryption	<ul style="list-style-type: none"> <li>• Fixed</li> <li>• Corrects an issue with the Omni 490 sending the PAN in the PIN request. The message to and back from the PIN Pad will now be correctly encrypted.</li> </ul>

## Verifone Omni 7000

Enhancement	Description
1. Load 7000 on Linux	<ul style="list-style-type: none"> <li>• Enhancement</li> <li>• The Omni 7000 has been updated to load automatically on Linux.</li> <li>• To perform the update of the Omni 7000 code on Linux, three files need to be manually added to the FVersion.txt file:              ldl              load7k.sh              o7klist.dat</li> </ul>

## VeriFone Vx670

Enhancement	Description
1. -No Change to Terminal Code -	<ul style="list-style-type: none"> <li>• ---</li> </ul>

## Stand Beside Code Changes

### Verifone Vx570

Enhancement	Description
1. -No Change to Verifone Vx570 code -	<ul style="list-style-type: none"> <li>• ---</li> </ul>

### 485 LAN Stand Beside

**485 LAN Stand Beside support has been discontinued.**

Enhancement	Description
2. Discontinue Support for Stand Beside	<ul style="list-style-type: none"> <li>• <b>Discontinued Support</b></li> <li>• 485 LAN Stand Beside systems are no longer supported.</li> <li>• This change affects the following 485 LAN integrations: IVI C2000 Protégé Verifone Everest Verifone Omni 490</li> <li>• The above terminals remain supported as part of the OpenEPS integration (only).</li> </ul>

## External Program Changes

### Engine Monitor and Tray Icon

Enhancement	Description
1. -No Change to Engine Monitor and Tray Icon -	<ul style="list-style-type: none"> <li>---</li> </ul>

### OMNI 7000 Scanmaster Code

Terminal code for the Scanmaster system is written and maintained by Concord. It is distributed on the WinEPS installation CD for convenience only.

Enhancement	Description
1. -No Change to Scanmaster Code -	<ul style="list-style-type: none"> <li>---</li> </ul>

### Redundancy Service

Enhancement	Description
1. -No Change to Redundancy Service -	<ul style="list-style-type: none"> <li>---</li> </ul>

### UpdateXMLFiles.Exe

Enhancement	Description
1. -No Change to UpdateXMLFiles.Exe -	<ul style="list-style-type: none"> <li>---</li> </ul>

## Virtual Terminal 2

Enhancement	Description
1. Update VT to use InitDLL function	<ul style="list-style-type: none"><li>• Enhancement</li><li>• Virtual Terminal now uses the OpenEPS InitDLL function, calling it as soon as VT is launched. This will ensure that even if VT is not signed on, any offline transactions will be processed up to the host as soon as possible.</li></ul>

# Section 2

## New Features

**WinEPS Fixed Issues and Enhancement - #8:**

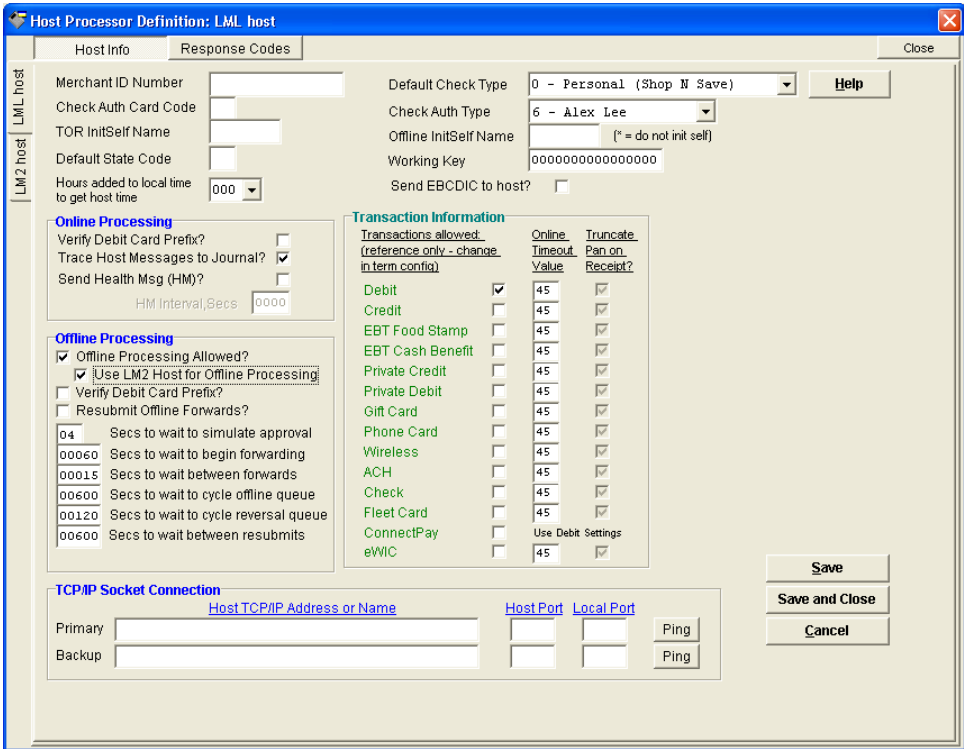
### New LML Host Updates

The LML host was enhanced to support additional tenders and transaction types.

FSA Transactions are now supported; FSA and standard credit transactions (including prepaid credit cards) can return partial approvals.

Blackhawk is supported for EAN 128 UPC (single pass) cards.

### LML Host Processor Definition Screen



LML Host Info Screen

Property	Description
Merchant ID Number	Supplied by the Host



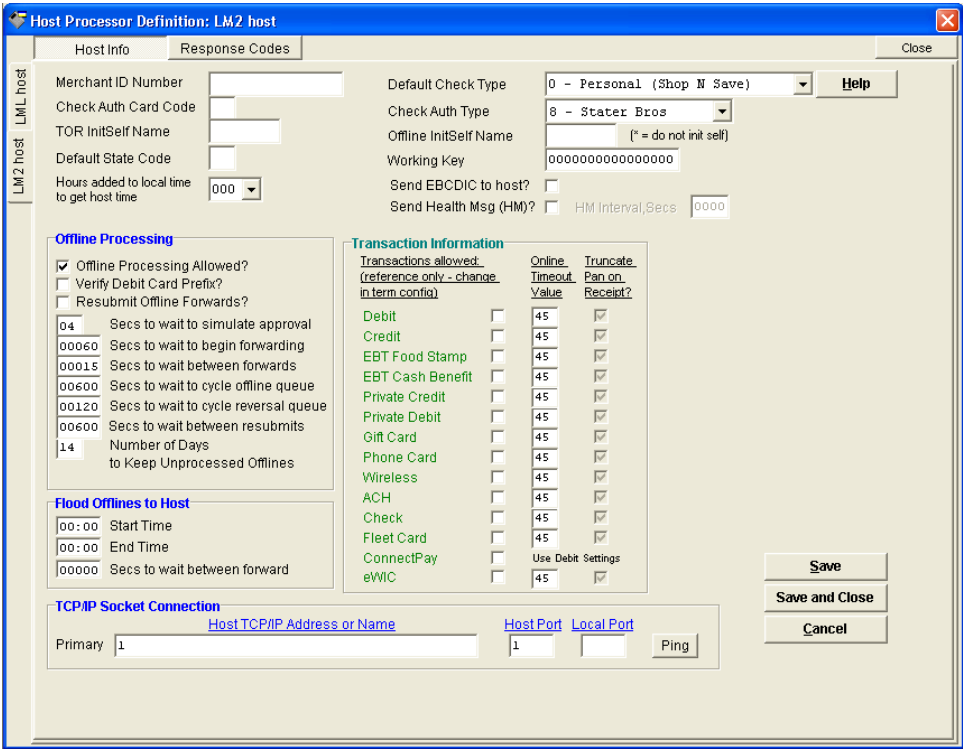
Property	Description
Check Auth Card Code	
TOR InitSelf Name	
Default State Code	Determined by the store's state
Hours Added to Local Time to Get Host Time	Determined by state time zone
Default Check Type	Default check type accepted on the front end: <ul style="list-style-type: none"> <li>• Personal</li> <li>• Payroll</li> <li>• Personal with Courtesy Card</li> <li>• Government</li> </ul>
Check Auth Type	Supplied by the Host
Offline InitSelf Name	Supplied by the Host
Working Key	Supplied by the Host
Send EBCDIC to host	Supplied by the Host
TOR InitSelf Name	Supplied by the Host
Online Processing	<p>Verify Debit Card Prefix? Check this box to force verification of Debit prefixes against the WinEPS debit bin file</p> <p>Trace Host Messages Should always be checked; this provides additional information for MTXEPS troubleshooting.</p>
Offline Processing	<p>Offline Processing allowed? Indicates whether offline processing for this host is allowed.</p> <p>Use LM2 Host for Offline Processing If this option is selected, another host screen for LM2 is made available for configuration; all offlines will be processed using the configuration information on the LM2 screen instead of the LML screen. This option is mainly used in order to send the offlines to a different IP address or port than the online transactions.</p> <p>Verify Debit Card Prefix? Check this box to force verification of Debit prefixes against the WinEPS debit bin file</p> <p>Resubmit Offline Forwards Check to save and resubmit offline forwards that were declined due to insufficient funds; attempts over the next several days to complete the offline transaction.</p>
Transaction Information	<p>Online Timeout Value Default of 45 seconds; determines how long WinEPS will wait for a response from the host before determining that the host is offline. The POS timers for these transactions should always be greater than the 45 seconds to avoid approval errors.</p> <p>Truncate Pan on Receipt For each transaction type, verify that the box is checked if possible.</p>
Primary Addr or Name	Supplied by the Host
Backup Addr or Name	Supplied by the Host
Port #(s)	Supplied by the Host

Buttons	Description
Help	Brings up this Help screen
Fleet Table	Button help in reserve for future use; currently non-functional.
Save	Saves configuration changes without closing screen.
Save and Close	Saves configuration changes and closes the screen.
Cancel	Closes screen without saving changes.



### LM2 Host Processor Definition Screen

The LM2 host is activated by the Use LM2 Host for Offline Processing option on the LML host screen. When Activated it allows offline transactions to be processed through a different Host IP address, and with different Offline Processing timer values than the main LML host screen.



LML Host Info Screen

Property	Description
Merchant ID Number	Supplied by the Host
Check Auth Card Code	
TOR InitSelf Name	
Default State Code	Determined by the store's state
Hours Added to Local Time to Get Host Time	Determined by state time zone
Default Check Type	Default check type accepted on the front end: <ul style="list-style-type: none"> <li>• Personal</li> <li>• Payroll</li> <li>• Personal with Courtesy Card</li> <li>• Government</li> </ul>
Check Auth Type	Supplied by the Host
Offline InitSelf Name	Supplied by the Host
Working Key	Supplied by the Host
Send EBCDIC to host	Supplied by the Host
Send Health Msg (HM)	Supplied by the Host
TOR InitSelf Name	Supplied by the Host

Property	Description
Offline Processing	<p>Offline Processing allowed? Indicates whether offline processing for this host is allowed. The LM2 host should not be used if offline processing is not allowed, as the LM2 host is strictly designed to handle offlines.</p> <p>Verify Debit Card Prefix? Check this box to force verification of Debit prefixes against the WinEPS debit bin file</p> <p>Resubmit Offline Forwards Check to save and resubmit offline forwards that were declined due to insufficient funds; attempts over the next several days to complete the offline transaction.</p>
Flood Offlines to Host	If a Start and end time are entered for this option, during the time period specified, the Sec to Wait between forward for offline will use the value specified here instead of the value from the Offline Processing box above.
Transaction Information	<p>Online Timeout Value Default of 45 seconds; determines how long WinEPS will wait for a response from the host before determining that the host is offline. The POS timers for these transactions should always be greater than the 45 seconds to avoid approval errors.</p> <p>Truncate Pan on Receipt For each transaction type, verify that the box is checked if possible.</p>
Primary Addr or Name	Supplied by the Host; generally either the IP or port is different from the IP/port address used on the LML host screen, as the LM2 host is designed to allow offlines to be sent to a different address than online.
Port #(s)	Supplied by the Host

Buttons	Description
Help	Brings up this Help screen
Fleet Table	Button help in reserve for future use; currently non-functional.
Save	Saves configuration changes without closing screen.
Save and Close	Saves configuration changes and closes the screen.
Cancel	Closes screen without saving changes.

## LML Supported Transaction Types

	Purchase / GC Redeem	Purch w/ CB	Cash Back Only	Return	Force [Voice/ Voucher]	Return Voucher	Balance Inquiry	Activation	Deactivation	Recharge	PreAuth / Completion
ACH	X	X	X	X	X	NA	NA	NA	NA	NA	X
Check (Electronic Check Conversion)	O (VO)	O (VO)	O (VO)	NA	X	NA	NA	NA	NA	NA	NA
Check (Standard)	O (VO)	O (VO)	X	NA	X	NA	NA	NA	NA	NA	NA
Connect Pay	X	NA	NA	X	NA	NA	NA	NA	NA	NA	NA
Credit Card	B (VO)	X	X	B (VO)	B	NA	NA	NA	NA	NA	X
Debit	B (VO)	B (VO)	B (VO)	X	NA	NA	NA	NA	NA	NA	X
EBT – Cash	B (VO)	B (VO)	X	O (VO)	X	NA	O	NA	NA	NA	X
EBT – Food Stamp	O (VO)	NA	NA	O (VO)	O (VO)	NA	O	NA	NA	NA	NA
Fleet	X	NA	NA	X	X	NA	NA	NA	NA	NA	X
Gift Card	B (VO)	NA	NA	O (VO)	X	NA	O	B	X	O	X
Phone Card	NA	NA	NA	NA	NA	NA	NA	X	X	X	NA
Private Credit	X	X	X	X	NA	NA	NA	NA	NA	NA	X
Private Debit	X	X	X	X	NA	NA	NA	NA	NA	NA	X
Wireless	NA	NA	NA	NA	NA	NA	NA	X	X	X	NA

**Legend:**

- O – Online only
- B – Both On & Offline
- B/Disc – As B, with Discover Card only
- (V) – Transaction Can be Voided
- (VO) – Can be Voided Online Only
- X – Not Supported
- NA – Not Applicable to Transaction Type

### LML Supported Encryption Types

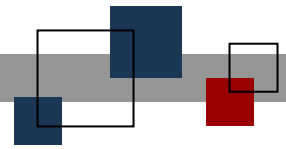
- DUKPT
- Master Session

## LML Additional Information

- For Store and Forward Transactions an IP address provided by the host must also be placed in the backup IP address section with a unique Host Port.
- Electronic Check Conversion has been certified for use with the LML host.
- The LM2 host allows the user to send offline forward transactions to a different IP Address or Port number than the primary LML connection.
- ZIP Code verification and CVV2 verification is supported for manual transactions. To use this feature, place the z – Zip Code and/or the v – CVV2 TAC into the manual card sequence.
- FSA Transactions are supported; FSA and standard credit transactions (including prepaid credit cards) can return partial approvals.
- Blackhawk is supported for EAN 128 UPC (single pass) cards.







**© StoreNext Retail Technologies LLC 2010**

StoreNext Retail Technologies LLC endeavors to ensure that the information in this document is correct and fairly stated but does not accept liability for any error or omission.

The development of StoreNext products and services is continuous and published information may not be up to date. It is important to check the current position with StoreNext. This document is not part of a contract or license save insofar as may be expressly agreed.