



System User's Guide

(IPAD100-10 & IPAD100-10RF)

Revision 2.0

April 29, 2004

P/N 90000608



Revision History

Revision Number	Date	Description of Change
1.0	1-15-2003	Original Release
2.0	4-29-2004	Prop 65 and Mercury Warning
2.0	4-29-2004	IPAD100-10 & IPAD100-10RF only

Read This First

Thank you for purchasing the iPAD. Read this users guide carefully before using your iPAD. To take full advantage of the iPAD's functions, please use it correctly.



January 200

Microsoft, Windows, and ActiveSync are registered trademarks of Microsoft Corporation in U.S.A. and other countries.

Notation in This Manual

■ Warning Indications

This users guide uses warning indications and symbols to urge users to use this software safely, to prevent personal injury and property damage.


Symbol	Description
 WARNING	This indicates a hazardous situation that could result in personal injury if the user does not perform the procedure correctly.
 CAUTION	This indicates a hazardous situation that could result in minor or moderate personal injury if the user does not perform the procedure correctly. The alert signal also indicates that damage to the product or other property, may occur if the user does not perform the procedure correctly.

WARNING: Proposition 65 Guidelines





“**WARNING:** Handling the cord on this product or cords associated with accessories sold with this product, will expose you to lead, a chemical known to the state of California to cause birth defects or other reproductive harm. *Wash hands after handling.*”

WARNING: Mercury Content



“**WARNING:** The LCD in this product may contain a light source that contains mercury. Please dispose of according to local, state, or federal laws.

 LAMP(S) INSIDE THIS PRODUCT CONTAIN MERCURY AND MUST BE RECYCLED OR DISPOSED OF ACCORDING TO LOCAL, STATE, OR FEDERAL LAWS.

WARNING: Laser Safety

 CAUTION  LASER RADIATION
DO NOT STARE INTO BEAM
RED LASER DIODE 1.5MW OUTPUT
CLASS 2 LASER PRODUCT
Compliance with 21 CFR 1040.10 and 1040.11
 

■ Other symbols

Symbol	Description
	This indicates important information that the user must note and what the user must not do in handling the iPAD. Be sure to read the information.
	This indicates advice or reference information. Read as needed.

■ Screen examples and input examples

- Screen examples provided in this manual are only examples. Please remember that some of these examples may differ from the screens that are actually displayed.
- Input examples provided in this manual are only examples. Please remember that some of these examples may differ from information that must actually be entered.


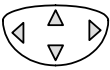
■ Abbreviations of product names

- In this manual, product names are abbreviated as follows.

Product name	Abbreviation
Microsoft ® Windows ® CE.NET operating system	Windows CE.NET
Microsoft ® ActiveSync ®	ActiveSync

■ Key notation

- This manual contains only key markings that appear on the iPAD.
- Keys on the iPAD have the following functions:

Key	Function
 key	Used to turn on and off iPAD power.
SFT key	Shift key. You can perform another operation by pressing another key while holding down this key.
ENT key	Enter key. This key is used to have the system accept processing. Pressing this key while holding down [SFT] displays system volume, brightness and calibration settings.
CLR key	Used to clear input.
CAN key	Cancel key(*2). Pressing this key while holding down [SFT] displays the taskbar(*1).
. key	Used to enter a period.
× key	Used to enter an asterisk(*2).
/ key	Used to enter a slash(*2).
Numeric keys (0 to 9)	Numeric keys. These keys are used to enter numbers. Pressing the [0] key while holding down [SFT] displays the screen keyboard(*1).
	Cursor keys. These keys can be used to move the current cursor up, down, right, and left. The middle button is used to confirm and have the system accept processing.
F1/F2 key	Used as function keys. Pressing this key while holding down [SFT] causes these keys to operate as F3 and F4 keys.
Side key L/R (trigger key)	The trigger key is used to read bar codes when the iPAD scanner is used.

*1 These are displayed when the corresponding shortcuts are set to Enable.
For information about setting shortcuts, see Chapter 16, "Controlling Operation by Pressing Keys in Combination"

*2 The operation of these keys depends on the application.

Tip

- Function keys (F1 to F4) can be assigned as application program launcher keys. An application program launcher is a function that starts an optional application program when a key is pressed.

For information about register the application program to be started, see Chapter 14, "Registering a Launcher".

■ Using the touch screen

- The iPAD uses a touch screen display. Tapping the touch screen display has the same effect as clicking with the left mouse button.
- In this manual, touch screen operations are described as follows.

Notation	Meaning
Tap	To tap means to touch one point on a screen. Tapping has the same effect as clicking with the left mouse button. This operation is used to determine and select processing.
Double-tap	To double-tap means to touch one point twice in succession on the screen. Double tapping has the same effect as double-clicking with the mouse. This operation is used to, for example, execute programs and open folders.
Drag	To drag is to select (tap) a specific item on the screen and move it. This operation is used to, for example, move files and select a range.

CAUTION

- To tap the screen, tap it with the supplied stylus or your finger.
Instead of using the stylus, do not tap the screen with an object having a sharp tip. Using such an object can damage the touch screen.

■ PC card

- The iPAD has a Compact Flash Storage Card slot.
- In this manual, the compact flash card is indicated as follows.

PC card name	Notation in this manual
Compact flash disk card	StorageCard

- In this manual, the term "StorageCard" is used for compact flash disk card.

Organization of This Manual

This manual is organized as follows:

- **Before Using the iPAD**
Explains the minimum requirements required to use the iPAD. Be sure to read this section.
- **Initial Setup**
Explains how to operate the iPAD for the first-time users of the iPAD. Be sure to read this section.
- **Basic Operations**
Explains the basic operations of the iPAD.
- **Utility Operations**
Explains how to perform utility operations such as customizing the iPAD operating environment for use with the customer's environment and copying between devices.
- **Special Operations**
Explains how to perform special operation for the iPAD.
- **Notes**
Provides important information related to utility operations for the iPAD.
- **Appendix**
Explains the error codes displayed during iPAD operation.

▲ CAUTION

- For important information about safe use of the iPAD and basic operations such as installing batteries and turning power on and off, carefully read the Operations Guide.
- Note that if the operating environment of the iPAD is changed, the iPAD may not operate as expected for some application programs.

Table of Contents

NOTATION IN THIS MANUAL	3
ORGANIZATION OF THIS MANUAL	7
1 MEMORY CONFIGURATION	11
2 SWITCHING POWER ON AND OFF	12
3 OPERATIONS COMMON TO WINDOWS	13
3.1 OPERATING MENUS	13
3.2 OPERATING TOOLBAR BUTTONS	13
3.3 DISPLAYING HIDDEN AREAS (SCROLL BAR OPERATION)	14
3.4 OPERATIONS IN A WINDOW	14
4 INITIAL SETUP	16
5 BEFORE SETTING UP THE IPAD	18
5.1 CREATING AN INSTALLATION SETUP FILE	18
5.2 EXAMPLE OF AN INSTALLATION SETUP FILE	24
5.3 SAVING THE INSTALLATION SETUP FILE	25
5.4 STRUCTURE OF CARD MEDIA FOR INSTALLATION	26
6 SETTING UP THE IPAD	27
6.1 CONFIRMING INITIAL SETUP	28
6.2 CALIBRATING THE TOUCH SCREEN	29
6.3 SETTING DATE AND TIME PROPERTIES	30
6.4 STARTING THE SETUP MENU	31
6.5 INSTALLING THE APPLICATION PROGRAM WITH ACTIVESYNC	32
6.6 INSTALLING APPLICATION PROGRAM USING A WIRELESS LAN	34
6.7 INSTALLING THE APPLICATION PROGRAM FROM CARD MEDIA	35
6.8 SETTING THE IPAD TO DEBUG MODE	38
7 USING THE SCREEN KEYBOARD	39
8 BATTERY WARNING MESSAGES	40
9 UTILITY OPERATIONS	41
9.1 SETUP MENU OVERVIEW	41
9.1.1 <i>Starting the setup menu</i>	42
10 SETTING THE DEVICE OPERATING ENVIRONMENT	43
10.1 OPENING THE IPAD CONTROL PANEL	43
10.2 OWNER INFORMATION PROPERTIES	44
10.3 KEYBOARD PROPERTIES	45
10.4 SYSTEM PROPERTIES	46
10.5 STYLUS PROPERTIES	47
10.6 DIALING PROPERTIES	48
10.7 NETWORK AND DIAL-UP CONNECTION PROPERTIES	49
10.7.1 <i>Setting the Network Properties</i>	52
10.8 PASSWORD PROPERTIES	54
10.9 POWER MANAGEMENT PROPERTIES	55
10.10 INTERNET OPTION PROPERTIES	56
10.11 VOLUME & SOUND PROPERTIES	56
10.12 DISPLAY PROPERTIES	57
10.13 REGIONAL SETTINGS PROPERTIES	58
10.14 SYSTEM PROPERTIES	60

10.15	DATE AND TIME PROPERTIES.....	62
10.16	INPUT PANEL PROPERTIES	63
11	INSTALLATION	64
11.1	PREPARATIONS FOR INSTALLATION	64
11.2	INSTALLING APPLICATION PROGRAMS	64
12	DEVICE PROPERTIES.....	65
13	INITIALIZING THE IPAD	66
14	REGISTERING A LAUNCHER.....	67
15	SAVING AND RESTORING THE REGISTRY	68
16	CONTROLLING OPERATION BY PRESSING KEYS IN COMBINATION.....	69
17	SETTING THE SYSTEM FONT	70
18	SETTING THE SYSTEM SPEED	71
19	RESTORATION.....	72
20	EXPLORER.....	73
20.1	REFERENCING A FILE AND FOLDER	73
20.2	COPYING FILES AND FOLDERS	74
20.3	DELETING FILES AND FOLDERS	75
20.4	CREATING A FOLDER	75
20.5	OTHER FUNCTIONS	76
20.6	NOTES ON THE IPAD EXPLORER.....	76
21	RUN A PROGRAM	77
22	SETTING DEBUG MODE	78
23	CONFIGURING INTERNET EXPLORER.....	79
23.1	IE GENERAL SETTINGS	80
23.2	IE CONNECTION SETTINGS	80
23.3	IE SECURITY SETTINGS.....	81
23.4	IE ADVANCED SETTINGS	81
23.5	IE ERROR CHECK SETTINGS	82
23.6	IE SCREEN MODE SETTINGS.....	82
24	SPECIAL OPERATIONS	83
24.1	IF MEMORY HAS BEEN LOST	83
24.2	RESTORATION PROCESS	84
24.3	RESTORATION FAILURE	85
25	DIAG (DIAGNOSTICS FUNCTION).....	86
25.1	STARTING DIAGNOSTICS.....	86
25.2	ALL TEST	87
25.3	VERSION.....	87
25.4	RAM R/W.....	87
25.5	FILE R/W (RAM/FFS/CF).....	88
25.6	KEYBOARD/TOUCH PANEL	89
25.7	DISPLAY	90
25.8	MCR.....	91
25.9	SCANNER.....	92
25.10	VOLTAGE.....	93
26	NOTES ON USE.....	94
26.1	HANDLING THE STORAGE CARD.....	94

- 26.2 TP EXPLORER 94
- 26.3 NETWORK SHARED FILE 94
- 26.4 MEMORY FAILURE..... 95
- 26.5 MAGNETIC CARD READER (MCR) 95
- 26.6 SCREEN BURN-IN 95
- 26.7 SWITCHING OF WIRELESS METHOD 95
- 27 APPENDIX..... 96**
- A IMPORTANT MESSAGES 96
- B ERROR CODES 97

1 Memory Configuration

The operating system installed on the iPAD is Windows CE.NET.

This chapter explains the memory configuration of the iPAD.

On the iPAD, data files are stored in a RAM disk area (object store) and on a flash disk (system information storage area).

If power is not supplied to the RAM disk area (object store), the contents of the entire RAM disk area are lost. Data stored on the flash disk is retained with or without power supplied.

The memory configuration of the iPAD is shown below.

R A M	(1): System storage area (program execution)
	(2): RAM disk area (object store)
	(3) FlashDisk storage area
	(4) ROM (Read Only Memory)
	(5) External storage media

(1): System storage area (program execution)

This area is the memory area used during program execution.

If the system storage area is insufficient, execution of the program may not be possible.

(2): RAM disk area (object store)

The RAM disk area is the area in which information such as data and programs can be stored.

If power is not supplied, however, the stored information is lost.

(3): \FlashDisk folder storage area

The FlashDisk is an area in which data is stored and retained whether or not power is supplied.

System information for the iPAD and backup files are stored in this area. The application can also use this area.

(4): ROM (Read Only Memory)

ROM is the area in which the operating system (Windows CE.NET) is stored.


Application programs cannot use this area.

(5): External storage media

External storage media can be used when a storage medium is inserted in the StorageCard slot of the iPAD. The RF card must be removed first.

To use StorageCard, see 'Using the storage card' in "[Notes on Use.](#)"

2 Switching Power On and Off

On the iPAD, the  key is used to switch between the power-on (resume) and power-off (suspend) states.

Suspend means that the power is turned off with the state of the currently active window preserved as is. Suspend is a function that temporarily halts work.

Conversely, resume means that the power is turned on in the suspended window state. Resume is a function for restarting work.



Tips

- Suspend: Function by which power is turned off and the work state is preserved as is
 - Resume: Function by which power is turned on and halted work is restarted after power has been turned off with the suspend function
-



Important

- On the iPAD, the user can turn off the power from the Windows Start menu.

Do not, however, turn off the power in the following cases:

- The iPAD is communicating with a PC using ActiveSync.
- The iPAD is communicating with the server using a wireless LAN.
- The iPAD is communicating using Bluetooth.
- Data (file) is being saved.
- The hourglass icon is displayed in the center of the window.
- The iPAD is being set with the setup menu (see "Utility Operations").

* In the above cases, some application programs disable the suspend operation.

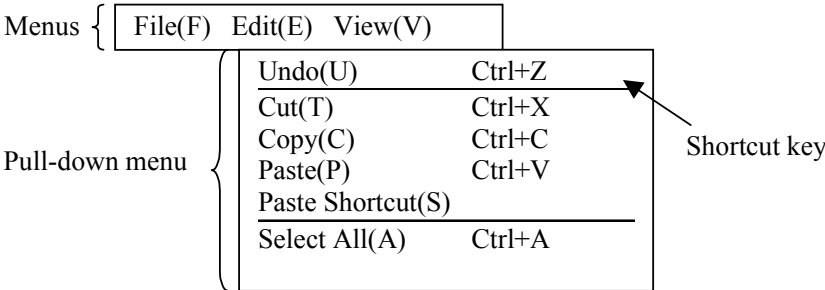
3 Operations Common to Windows

This chapter explains the basic user interface of a windows application program when it is run on the iPAD.

3.1 Operating menus

Each menu contains a list of the functions that can be executed by each application program.

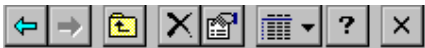
The specified function can be executed by tapping it to select from a menu.



3.2 Operating toolbar buttons

Toolbar buttons are the buttons with icons displayed underneath the menu bar at the top of an application program window.

When you tap a toolbar button, the function indicated by the icon is executed.

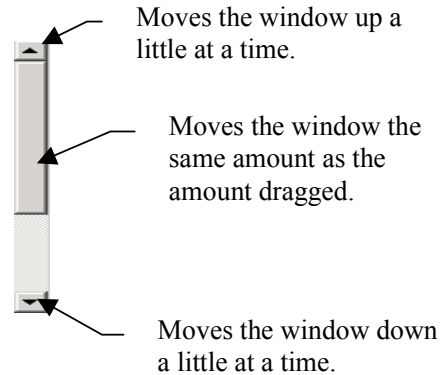


- Tapping the [x] button closes a window. Tapping this button may also exit an application program, depending on the program that is running.

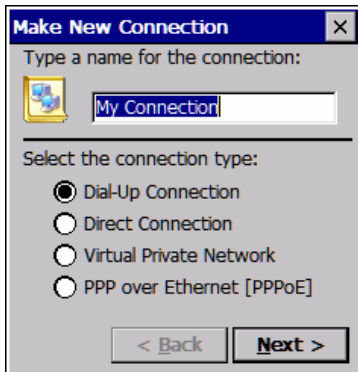
3.3 Displaying hidden areas (scroll bar operation)

If some of the data is hidden outside the window, a scroll bar such as the one at the right may be displayed.

To operate the scroll bar, see the figure at the right.



3.4 Operations in a window



(1) Character input area and cursor

Characters can be typed in the character input area if it is active. The cursor is displayed in the current character input area.

(2) Option button

Select only one of the listed items (option buttons).

(3) Button

Tapping a button causes the selected processing to be accepted.

(4) Tab

If a window has several pages, you can alternate between pages by pressing the tab button.

(5) Combo box

A combo box is used to list the selectable items for the specified content. Only one of the selectable items can be selected from the list. Some combo boxes can be used to set values.

(6) Check box

A check box is used to select whether to enable or disable the specified function.

4 Initial Setup

Setup refers to the operations required so that the iPAD can be used.

Shown below are the operations up to setup:

1 Unpack the iPAD 100-xx

Remove the iPAD from the packing crate and install the supplied main battery.
For more information, see the Quick Reference Guide supplied with the iPAD.




2 Prepare the installation setup files

Prepare the setup file required for installing the application programs that run on the iPAD.
See Chapter 5, "Before Setting Up the iPAD".



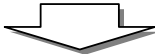
3 Turn on the power

Press the [] key for about one second to turn on the iPAD.



4 Setup

Set up the application program that runs on the iPAD.
See Chapter 6, "Setting Up the iPAD" in "Initial Setup."



5 Run the application program

Start the iPAD and confirm that the application program just set up runs.



- When the iPAD is purchased, the main battery and backup battery have not been charged. When you set up the iPAD, replace the main battery with charged batteries or perform installation while connecting the iPAD to the cradle.

Alternatively, install the main battery in the iPAD, connect the iPAD to the cradle, and allow the battery to charge for about twenty-four hours. Both the main battery and the backup battery will be charged.

 - There are three ways to set up the application program:
 - Set up from card media
 - Set up using wireless LAN communication
 - Set up using USB ActiveSync communication, which uses the cradle
-

5 Before Setting Up the iPAD

- Note: If the iPAD has been pre-loaded with application software, the following steps will not be necessary. Proceed to section 7 and beyond for general information on using the iPAD.

Before you set up the iPAD, it is necessary to create a setup file for installing application programs that run on the iPAD .

Tip

- If there are no application programs that run on the iPAD or if the application programs that run on the iPAD are in the development stage, the iPAD can be run in debug mode without any application programs installed. A setup file for installing application programs is not required for debug mode.

For more information, see "Setting the iPAD to debug mode" in Chapter 6.

5.1 Creating an installation setup file

Create an installation setup file with the text editor (for example, Notepad) on the desktop PC.

(1) Initializing installation folders

Before starting installation, specify any folders that must be initialized.

(Format)

```
[Initialize]
DirectoryName=name-of-folder-to-be-initialized[,name-of-folder-to-be-initialized ...]
END
```

(Example)

```
[Initialize]
DirectoryName=\FlashDisk\Temp
END
```

(2) Specifying an installation source and installation destination

Specify where (installation destination) on the iPAD the files (installation source) on the installation media are to be installed.

(Format)

```
[Install File]
installation-source-file-name=installation-destination-file-name
[installation-source-file-name=installation-destination-file-name]
      :
      :
END
```

- Do not insert any blank characters (space, TAB) before and after '='.
- For installation by folder, specify '*.*' as the installation source file name and installation destination file name.
- On the iPAD, the STORAGECARD slot is allocated to the 'StorageCard' folder.
- If the installation source file name does not begin with '\', file installation starts on the relative path from the folder containing the installation setup file.

(Example)

```
[Install File]
\FlashDisk\HhtApp\*.*=HhtApp\*.*           (Specification using the absolute path)
Libs\MyLib.dll=Windows\MyLib.DLL          (Specification using a relative path)
END
```

Tips

- For installation using wireless LAN, specify the installation source with a relative path without adding '\' before the installation source folder. Specifying a relative path eliminates the need to specify a shared folder name.
 - The setup file in which a relative path is specified can be used for all installations using a compact flash card, 802.11b LAN, or through USB ActiveSync.
-

(3) Specifying a startup application

Specify the name of the application program to be started in Startup.

A shortcut for the program specified here is created in Startup.

(Format)

```
[StartUp]
FileName=startup-program-file-name [parameter]
END
```

- Be sure to specify the name of the application program to be started in Startup with an installation destination path name.
- If the program file name and its path name contain any spaces, specify them enclosed in double quotation marks ("").

(Example)

```
[StartUp]
FileName="\Hht App\HhtApp.Exe"
END
```


Important

-
- If a startup application program is specified, a shortcut is created in the “\Windows\startup” folder.
 - Only one startup application program can be specified.
-

(4) Specifying Cab file extraction

Specify the Cab file that must be extracted on the iPAD.

(Format)

```
[WceLoad]
CabFile==cab-file-name [cab-file-name...]
END
```

(Example)

```
[WceLoad]
CabFile="\FlashDiskt\HHTApp.CAB"
END
```

(5) Setting Control Panel information

At installation, some Control Panel functions can be set simultaneously.

(Format)

```
[Control Panel]
TaskBar=taskbar display enabled/disabled
TeamPadInf=system information window display enabled/disabled
ScrKey=screen keyboard display enabled/disabled
BattPowerOff=automatic power-off time when on main battery operation
ExtPowerOff=automatic power-off time when on external power operation
BattBackLightOff=automatic front light off time when on main battery operation
ExtBackLightOff=automatic front light off time when on external power operation
DeviceName=communication device name
Volume=beep volume
MemorySize=size in kilobytes for the RAM Object Store
BattBackLightOff=automatic shut off of backlight when on main battery operation
ExtBackLightOff=automatic shut off of backlight when on external battery operation
BackLightTouchOn=automatic turn on of backlight when screen touched
NetworkAutoPowerOff=automatic power-off unit if network traffic present
InstallServer=server name to connect to an RF LAN environment
InstallPath=path on server where CONFIG.HHT is located
Savemkey=set to enable/disable prompting for re-calibration and time/date entry
END
```

* External power operation refers to operation of the iPAD when it is connected to the cradle.

- In this specification, specify only required items.
- Specify the Control Panel information that can be set during installation.
 - Taskbar display enabled/disabled (default: Disabled)
(0: Disabled, 1: Enabled)
 - System information window display enabled/disabled (default : Enabled)
(0: Disabled, 1: Enabled)
 - Screen keyboard display enabled/disabled (default: Enabled)
(0: Disabled, 1: Enabled)
 - Automatic power-off time when on main battery operation (default: 180 seconds)
(Unit: seconds, specification range: 0 to 300 seconds. If 0 seconds is specified, this item is disabled.)
 - Automatic power-off time when on external power operation (default: 0 seconds, Disabled)
(Unit: seconds, specification range: 0 to 1800 seconds. If 0 seconds is specified, this item is disabled.)
 - Automatic front light off time when on main battery operation (default: 60 seconds)
(Unit: seconds, specification range: 0 to 300 seconds. If 0 seconds is specified, this item is disabled.)

- Automatic front light off time when on external power operation (default: 600 seconds)
(Unit: seconds, specification range: 0 to 1800 seconds. If 0 seconds is specified, this item is disabled.)
- Communication device name (default: Win CE)
(Specify the device name used for communication.)
- Beep volume (default: Middle)
(Volume level: 1: High, 2: Middle, 3: Low, 4: Off)
- Memory size (default: 32Mb)
- BattBackLightOff (default: 1 minute)
- ExtBackLightOff (default: 10 minutes)
- BackLightTouchOn (default: on)
- NetworkAutoPowerOff (default: 1 unit will suspend irregardless of network activity)
- InstallServer (default: InstallServer)
(Specify the name of the device server which contains the application install image)
- InstallPath (default: Install)
(Specify the name of the path on the device server to install the application files from)
- Savemkey (default: 0)
(Either specifies to system to prompt the user to re-calibrate and/or re-enter date/time settings upon system restoration from a cold-boot sequence)

(Example) taskbar display is set to enabled, automatic power off when on main battery operation is set to disabled, and beep volume is set to low.

[Control Panel]

TaskBar=1

BattPowerOff=0

Volume=3

END

(6) Registering a registry (class ID)

Some application program files (for example, DLL and OCX) do not operate if their registry class IDs are not registered.

Specify here the name of the file whose class ID must be registered.

(Format)

```
[RegSvrCE]
CESelfRegister=registry-file-name[,registry-file-name...]
END
```

- If a file name is specified without a path name, the system folder (\Windows) is referenced.

(Example)

[RegSvrCE]

CESelfRegister=\HhtApp\HhtApp.DLL,\Windows\HandWrite.OCX

END

(7) Setting launcher registration

Application programs (launcher functions) started when the function keys on the iPAD are pressed and can be specified.

(Format)

```
[Launch]
F1=name-of-application-program-when-F1-key-is-pressed [parameter]
F2=name-of-application-program-when-F2-key-is-pressed [parameter]
F3=name-of-application-program-when-F3-key-is-pressed [parameter]
F4=name-of-application-program-when-F4-key-is-pressed [parameter]
END
```

(Press the F3 or F4 key while holding down the [SFT] key.)

- Specify an application program file name using the absolute path.
- If an application program file name and its path name contain any spaces, specify them enclosed in double quotation marks ("").

(Example)

```
[Launch]
F1=\Windows\Control.exe
F2="\Program Files\HhtApp\HhtApp.Exe"
END
```

(8) Specifying importing of a registry file

The specific registry keys and values required by an application program to be imported.

(Format)

```
[User Registry]
RegFile=name-of-registry-file-to-be-imported[,name-of-registry-file-to-be-imported...]
END
```

- Be sure to specify the name of the registry file to be imported with the absolute path name.

(Example)

```
[User Registry]
RegFile=\HhtApp\Reg\Hht.Reg,\HhtApp\Reg\Comm.Reg
END
```

Important

- Only the registry files created by the registry editor built into the iPAD can be imported. The registry files created by other application programs cannot be imported because their file formats are different.
 - Registry files can be created by the registry editor (TpRegEdit.Exe) built into the iPAD. For more information, see "Editing the Registry," in the "iPAD Programmer's Reference Guide".
-

5.2 Example of an installation setup file

An example of coding the setup file used when an application program is to be installed from StorageCard is shown below.

- Installing an application program and data file by folder
- Registering the DLL specific to application programs in a registry
- Setting all the automatic power-off functions and automatic front light-off functions to disabled
- Importing registry keys/values (HHT.Reg, Comm.Reg) specific to application programs
- Starting another program dedicatedly used for the application program when the F1 key is pressed

```
[Install File]
\storagecard\HhtApp\*. *=\Program Files\HhtApp\*. *
\storagecard\HhtApp.Dll=\Windows\HhtApp.Dll
END

[StartUp]
FileName="Program Files\HhtApp\HhtApp.exe"
END

[RegSvrCE]
CESelfRegister=\Windows\HhtApp.Dll
END

[Control Panel]
BattPowerOff=0
BattBackLightOff=0
Volume=4
END

[User Registry]
RegFile=Program Files\HhtApp\HHT.Reg,Program Files\HhtApp\Comm.Reg
END

[Launch]
F1="Program Files\HhtApp\HhtCalc.exe"
END
```

Loads an application program into memory and DLL into Windows.

Registers the DLL class ID.

Sets the automatic power-off time and automatic front light-off time for main battery operation to disabled and the beep volume to off.

Starts an applicaion program when the F1 key is pressed.

5.3 Saving the installation setup file

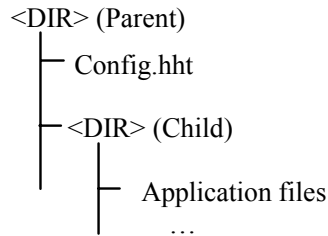
When the installation setup file has been created, save it with file name "Config.hht." The folders in which the setup file can be saved are as follows:

<<For setup from card media>>

Root folder for the card media (for example, STORAGECARD) created for installation

<<For setup using ActiveSync communication, which uses the cradle>>

Root folder for CAB files (when an installation CAB file is created)



Note: The Config.hht file must reside in the parent directory. Application files can reside in child level directories to help make maintenance easier.

<<For setup using wireless LAN communication>>

Same directory structure as ActiveSync above.

Important

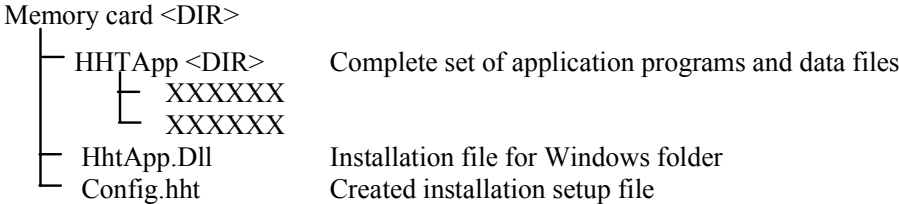
- If an application program is installed from STORAGECARD, for example, the setup file must be stored in the root folder for your installation media.
- If the setup file is stored in another folder, the location of the setup file must be specified.

5.4 Structure of card media for installation

When an installation setup file is created and saved, copy the application program to the installation media, such as STORAGECARD.

Copy the application program to the folder coded as the installation source in the installation setup file. An example of creating installation media is shown below.

(Example)



6 Setting Up the iPAD

Setup prepares the iPAD for use.

Set up the iPAD with the following procedure.

- 1** Check initial setup.

 When the iPAD is turned on for the first time, the initial setup confirmation window opens.
- 2** Calibrate the touch screen.

 Set a touch screen calibration location.
- 3** Set date and time.


 Set the current date and time.
- 4** The setup tool starts.
- 5** Install an application program.

 Install an application program on the iPAD using card media, wireless LAN, or ActiveSync communication.
- 6** Run the application program.

 Restart the iPAD to run the application program set up.

Tip

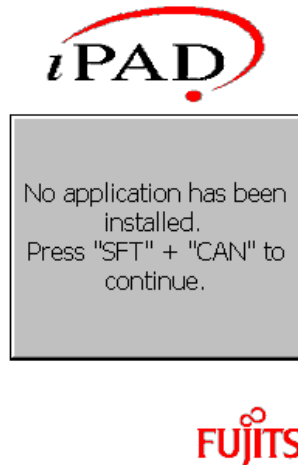
- To run the iPAD without installing an application program, set the iPAD to debug mode.
 - Debug mode is also used for debugging of an application program that is being developed.
 - For more information, see "Setting the iPAD to debug mode" in Chapter 6.
-

Press the [] key of the iPAD to turn on the power.

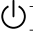
The initial setup confirmation window opens.

6.1 Confirming initial setup

When iPAD power is turned on for the first time, the following initial setup confirmation window opens.



To start setup: Press the [CAN] key while holding down the [SFT] key.
Touch screen calibration is started.

To cancel setup: Press the [] key.
Power to the iPAD is turned off.

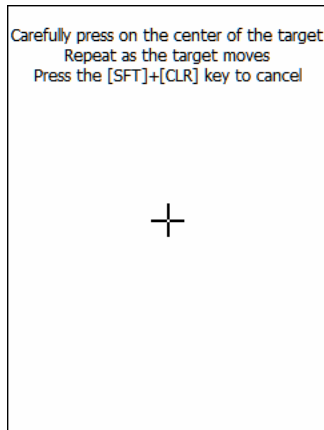
Important

- The state in which the initial setup confirmation window is displayed when iPAD power is turned on is called the initial setup state.
-

6.2 Calibrating the touch screen

When power is turned on for the first time, the response to a tap may be incorrect. If the response is incorrect, calibrate the tap position of the touch screen.

The following calibration window opens.



- (1) Press the center of the target (+).

Press the center of the target with the stylus according to the instructions displayed in the calibration window.

Since, when the stylus is released, the target moves in the order center of window, upper left of window, lower left of window, lower right of window, and upper right of window, repeat the same operation.

To cancel touch screen calibration before completion, press the [CLR] key while holding down the [SFT] key.

- (2) Registering the calibration position

When the center of the target is tapped, the target disappears and the message [New calibration information has been registered] appears. Tap the screen to register the calibration information.

When touch screen calibration is complete, setup moves to Section 6.3 "Setting Date and Time Properties."

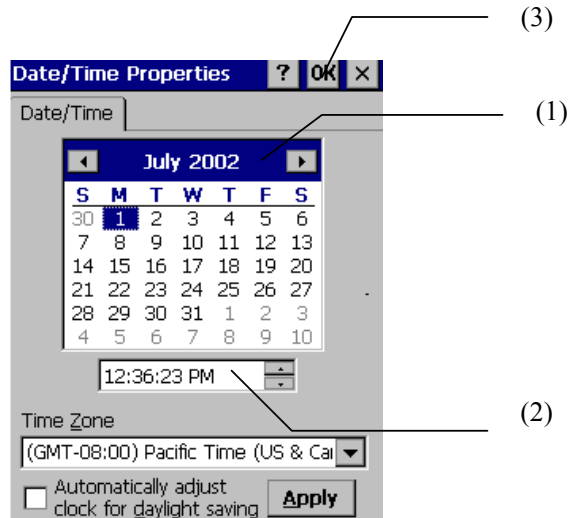
Tips

- Tapping a position other than the center of a target has the same effect as redo.
- The touch screen can be calibrated even during operation of the iPAD.

For information about calibrating the touch screen during operation of the iPAD, see "Calibrating the touch screen" in Chapter 6.2.

6.3 Setting date and time properties

Set the current date and time.



(1) Date calendar

Switch the calendar to the current year and month and select the current day.



: This button is used to display the calendar for the previous month.



: This button is used to display the calendar for the next month.

Tapping the number part of a year enables the year to be entered directly from the screen keyboard.

Tapping the number of a month directly displays a list of months from January to December. A month can be selected from the list.

(2) Current time

Specify the current time in 'hour:minute:second' format.

Example) For 23 hours 59 minutes 00 seconds, enter '23:59:00'.

(3) Canceling and registering date and time

Tapping the [x] button cancels registration of date and time.

Tapping the [OK] button registers the set date and time.

When setting of the date and time properties is complete, the setup menu is started and setup moves to "■ Starting the setup menu."

Tips

- If registration of the date and time is canceled by tapping the [x] button, the date and time are not updated.
- In Time Zone, you can specify a region that is the origin of date and time.
- Select a time zone before setting a date and time.

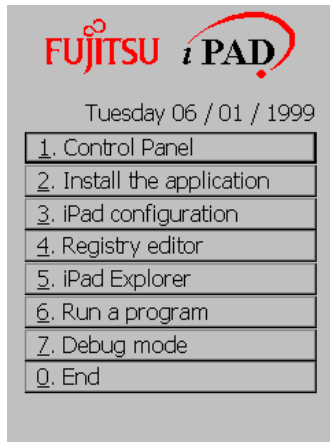
If the time zone is changed after the date and time have been set, the time is automatically converted to the time relative to the Greenwich Mean Time.

6.4 Starting the setup menu

The setup menu starts, and the following is displayed.

Install the application program by tapping [2. Install the application] on the setup menu.

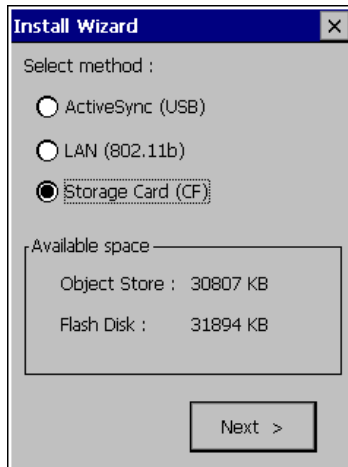
To cancel setup, tap [0. End]. The power is turned off. Turning on the power again restores the initial setup state.



Tip

- If you do not want to install the application program, tap [7.Debug mode]. Setup moves to "Setting the iPAD to debug mode" in Chapter 6.

Tapping the [2. Install the application] displays the following installation method selection window:



Select an installation method and tap the [Next] button.

- ActiveSync
When this method is selected, setup moves to selection of a connection method.
- LAN
When this method is selected, setup moves to network adapter/IP address setting and installation server confirmation.
- StorageCard
When this method is selected and the [Next] button is pressed, installation starts.

Tip

- Installation of an application program always requires an installation setup file. For the installation setup file, see Chapter 5, "Before Setting Up the iPAD".

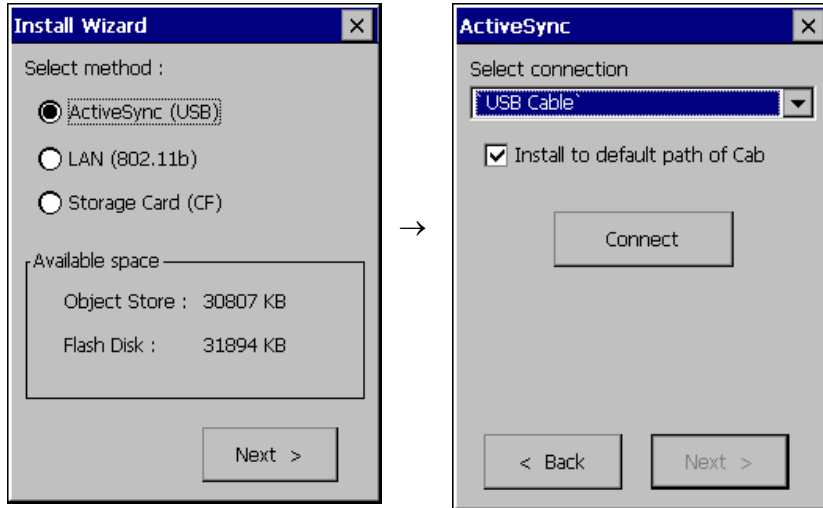
6.5 Installing the application program with ActiveSync

Installing the application program using ActiveSync communication requires a cradle and USB cable.

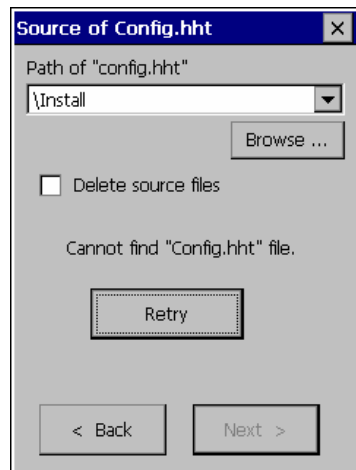
Connect the cradle to the desktop PC with the USB cable.

Next, place the iPAD in the cradle and install the application program.

Selecting "Install ActiveSync" displays the methods for connecting the desktop PC to the iPAD. Select the connection method (USB Cable) appropriate for the current environment and tap the [Connect (C)] button.



ActiveSync connects the desktop PC to the iPAD.



After the desktop PC has been connected to the iPAD with ActiveSync, the connection dialog box opens. Connect the desktop PC as a guest without establishing a partner relationship. Copy the CONFIG.HHT file and folders loaded by CONFIG.HHT to the install folder on the iPAD. You can also place the CONFIG.HHT file and associated folders into an 'Install' folder on the PC and copy the entire 'Install' folder and its contents directly onto the iPAD.

After installing the CAB file, tap the 'Off' button to terminate ActiveSync connection and tap the 'Next' button to select an installation source. Next, specify the folder where the CAB file is installed and tap the 'Next' button to install the application program.

The subsequent installation procedure is the same as the procedure for installing an application program from card media.

**Important**

- Installing the application program with the cradle requires that the USB serial host driver has already been installed to the desktop PC. For information about installing the USB driver on the desktop PC side, see the iPAD Programmer's Reference Guide.
 - When the iPAD is being connected to the desktop PC with ActiveSync, do not turn off iPAD power. If power is turned off, ActiveSync on the desktop PC side may not terminate normally. If termination is not normal, remove the iPAD from the cradle, make sure that ActiveSync on the desktop PC side has terminated normally, and then reconnect the iPAD to the desktop PC.
Repeatedly placing the iPAD in and removing it from the cradle may also make the desktop PC unstable. Do not connect and then disconnect the iPAD within a short period of time.
 - For information about creating the CAB file with CabWizard and about using AppManager for CAB file installation, see the eMbedded Visual Tools and ActiveSync help menus. Copying an application program to the mobile device folder manually after connecting ActiveSync does not require creation of a CAB file. In this case, copy the application program, turn off ActiveSync, and then specify the copy destination folder to start installation.
 - CEAppMgr cannot be used to install an application that will recover itself on power fail.
-

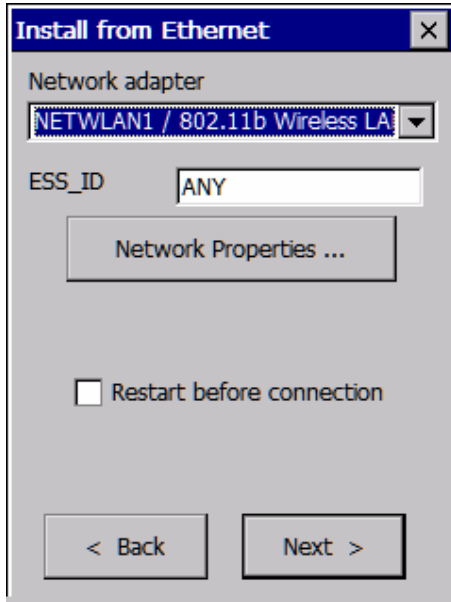
6.6 Installing application program using a wireless LAN

If a wireless LAN is used between the iPAD and the desktop PC, the application program can be installed using the LAN.

Selecting "LAN" opens the following communication setup window:

To cancel application program installation using wireless LAN communication, tap the [x] button.

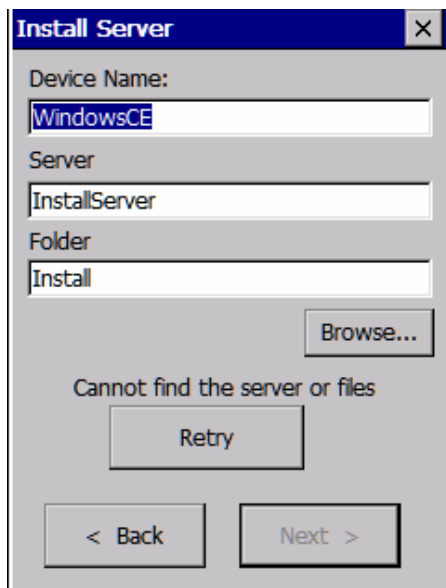
The setup menu is redisplayed.



- (1) Network Adapter
Select the network adapter to be used.
- (2) ESS_ID
This field is not available for entry and has no meaning in the U.S.
- (3) Network Properties button
Tap here when specifying static IP, an ESS_ID, or WEP keys. See section 6.6.1.
- (4) Next button
When tapped, setup moves to the next step.

(If network adapter settings are updated, it may take a long time to access the network after the server has been restarted.)

Last, specify the server name and shared folder name for installation and tap 'Next' to start installation. If the message 'The server or file cannot be found.' is displayed, make sure that the entered server name and folder name are correct, then tap the 'Retry' button.



- (1) Device Name
Must change from default to access network.
- (2) Sever
A server name must be entered.
- (3) Folder
This must be a shared folder on server without a leading \.

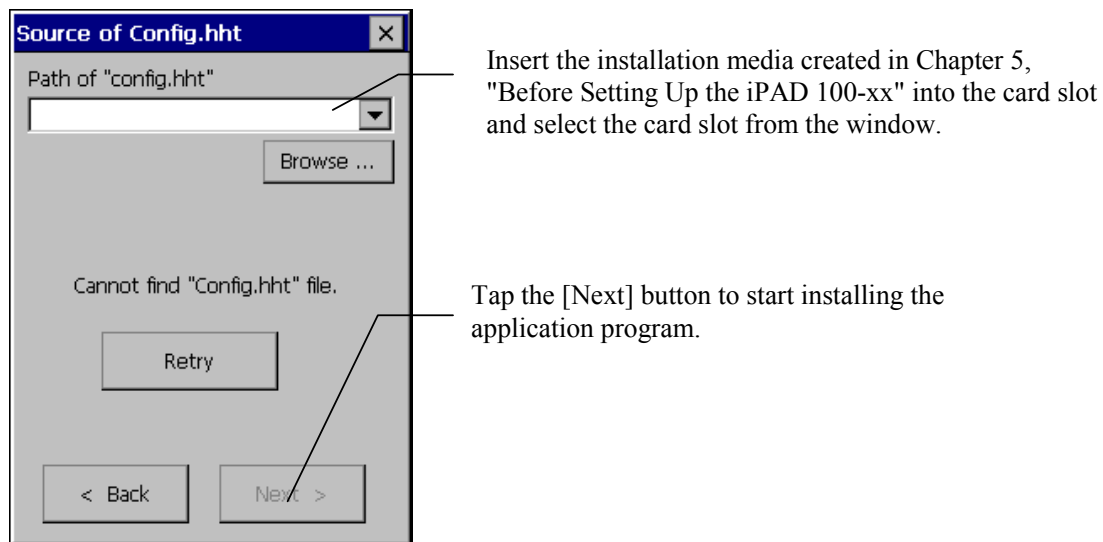
The subsequent installation procedure is the same as the procedure for installing an application program from card media.

6.7 Installing the application program from card media

Selecting "Storage Card" opens the following card media installation window:

To cancel application program installation from card media, tap the [x] button.

The setup menu is redisplayed.

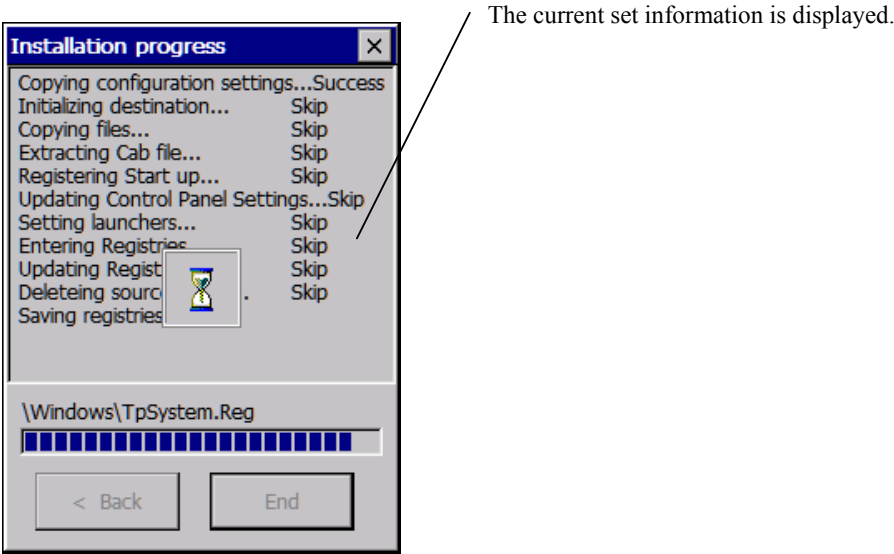


Tip

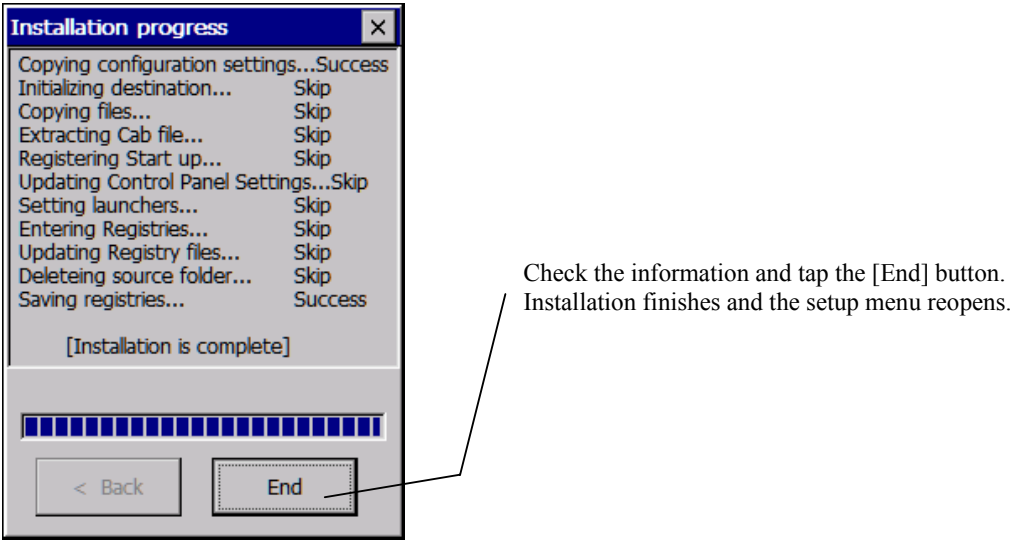
- The iPAD recognizes the StorageCard slot as the "StorageCard" folder.
 - * StorageCard cannot be installed into a device in which a wireless LAN card is installed.
-

When application program installation starts, the following processing is automatically performed:

- Copying of the file whose name is specified in the installation setup file from a flash disk card
- Setting of the operating environment information contained in the installation setup file



When application program installation is completed normally, the following installation completion window opens.



When the setup menu reopens, tap the [0. End] button to turn off iPAD power and restart the iPAD. Confirm that the installed application program is automatically started from Startup.

Tips

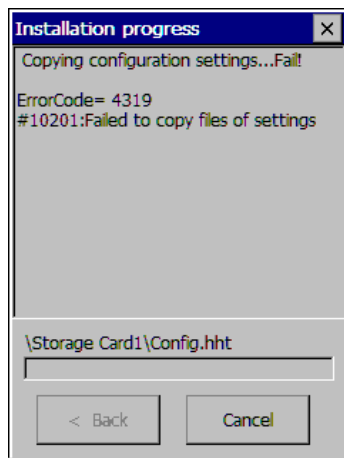
- To set up the operating environment (for example, IP address) of the iPAD after installing the application program, change the operating environment from the Control Panel after the setup menu has reopened.

For the details of the setup menu, see Chapter 9, "Setup Menu" in "Utility Operations."

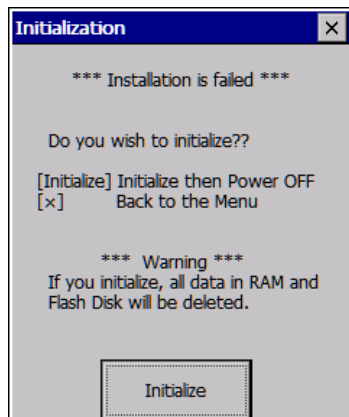
- To reset a device that has already been set up, do so after the iPAD has been completely initialized.

For information about initializing the iPAD, see "Initializing the iPAD" in Chapter 13.

If a fatal error occurs during application program installation, the following window opens.



If a fatal error occurs during application program installation, check the contents of the installation setup file after checking the error information.



Check the contents of the installation setup file, tap the [Initialize] button to initialize the iPAD, then set up the application program again with the modified setup file.

Important

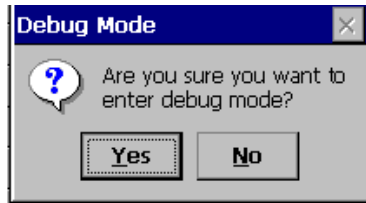
- For the meaning of error codes that can be displayed, see Appendix A, "Error Codes."
-

6.8 Setting the iPAD to debug mode

Debug mode is the mode in which devices can be started and used even though no application program is installed in the iPAD.

Setting debug mode enables functions such as debugging of application program that is being developed.

Tap [8. Debug mode] on the setup menu. The following confirmation message window opens.



Tapping the [Yes] button sets the iPAD to debug mode.
The iPAD is automatically reset and restarted.

Tapping the [No] button redisplayes the setup menu.

Tip

- If debug mode is set, the iPAD reverts the initial setup state when RAM is erased.
-

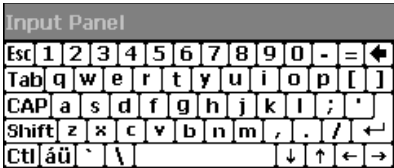
7 Using the Screen Keyboard

On the iPAD, keys can be used to display and delete the screen keyboard.

If the [0] key is pressed while the [SFT] key is held down, the screen keyboard switches between display and deletion.

The following keyboard is available as the screen keyboard.

- Keyboard
Keyboard from which alphanumeric characters can be entered



Tip

- The keyboard can be switched using "Input Panel" in the Control Panel.
For the Control Panel, see Chapter 10, "Setting the Device Operating Environment".

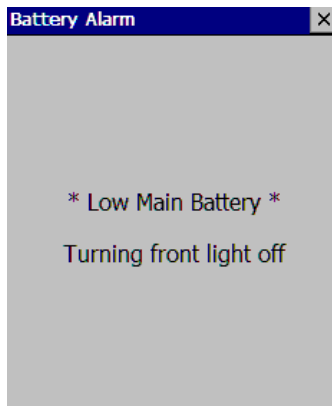
8 Battery Warning Messages

If the remaining battery charge on the iPAD is insufficient, a battery warning message is displayed.

If any of the following warning messages are displayed, charge or replace the battery immediately.

For information about replacing the battery, see the Operations Guide.

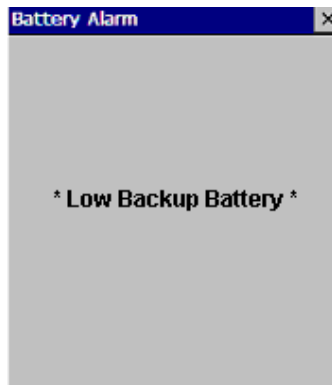
A battery warning message can be closed by tapping the [x] button.



- Main battery alarm message

The remaining charge of the main battery is insufficient.

Charge the main battery installed in the main unit using the cradle, or replace the main battery with a charged one.



- Backup battery alarm message

The remaining charge of the backup battery is insufficient.

Charge the main battery installed in the main unit using the cradle.

Important

- If power is turned off because the main battery is dead, charge or replace the battery and start the iPAD.
 - If the backup battery is charged while the main battery is dead, memory is backed up by the backup battery. The backup battery will preserve the contents of memory when the main battery is discharged. In this state, if the backup battery loses its charge, the contents of memory will be lost.
 - If the backup battery replacement warning message is displayed, charge the backup battery immediately or notify your Fujitsu maintenance representative. If the backup battery is dead, memory is not backed up.
-

9 Utility Operations

9.1 Setup Menu Overview

The iPAD provides several unique functions.

To use these unique functions, you need to start the setup menu.

The setup menu has the following functions:

(1) Control panel

The setup menu can be used to call the iPAD Control Panel, which is used to set the iPAD operating environments.

(2) Installation

The setup menu can be used to install application programs from external storage media (card media) or installs application programs via communication from a desktop PC that uses a wireless LAN or ActiveSync. For more information regarding iPAD configuration, see Chapter 6, "Setting Up the iPAD".

(3) Device properties

The setup menu can be used to set properties unique to the iPAD.

The following property functions are supported:

- Initialization function: Initializes the device.
- Launcher registration function: Supports program calling using function keys.
- Registry function: Saves or restores registry information.
- Key-press control function: Controls device operation when specific keys are pressed.
- Font setting function: Changes the system font.

(4) Registry editor

The setup menu can be used to start the iPAD registry editor.

(5) Explorer

The setup menu can be used to start the iPAD Explorer.

(6) Program execution by specifying file name

The setup menu allows you to execute a program execution by specifying its file name on the screen.

(7) Debug mode

For the development of application programs, the setup menu can be used to set the iPAD to debug mode (desktop display).

9.1.1 Starting the setup menu

The iPAD can start the setup menu except during initial setup.

The advantages of using the setup menu are as follows:

(Examples)

- Changing the device operating environment from the iPAD Control Panel
- Initializing the iPAD to reinstall an application program
- Saving or restoring application programs

Depending on the operating status of the iPAD, the setup menu can be started with any of the following methods:

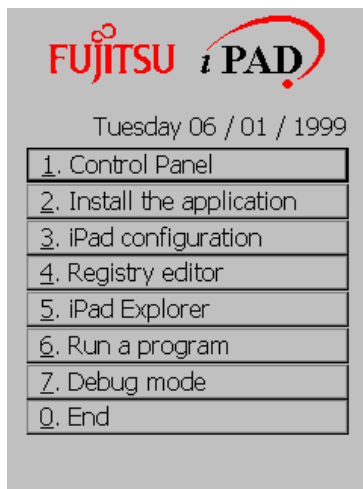
(1) Resetting the device

Press the reset switch at the rear of the iPAD using a pointed object then quickly hold down the [SFT] and [CAN] keys.

For information about resetting method, see the instruction manual supplied with the iPAD.

(3) Starting the setup menu

If the iPAD is started while the [SFT] and [CAN] keys are held down, the setup menu menu shown below is displayed. After confirming that the setup menu has started, release the keys.



Tapping [0] to [7] enables the functions listed in "Overview" to be operated.

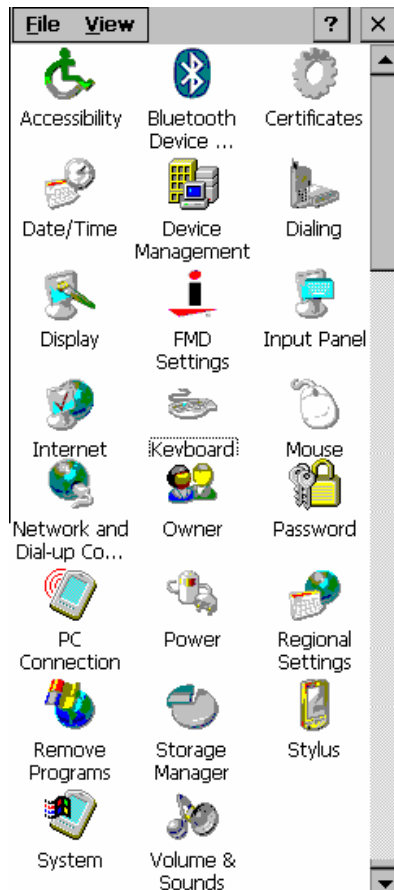
Tips

- If the "0. End" function is selected, all registry settings modified during the setup process will be saved into permanent storage. All registry updates that occur after "0. End" is selected will only exist in RAM.
- Restore processing when memory has been erased restore the operating environment saved in the system information storage area to the iPAD. For information about restore processing, see Chapter 21, "Restore Processing When Memory Erased," in "Special Operations."

10 Setting the Device Operating Environment

10.1 Opening the iPAD Control Panel

To change the application program operating environment of the iPAD, tap [1. Control Panel] on the setup menu. The iPAD Control Panel opens.

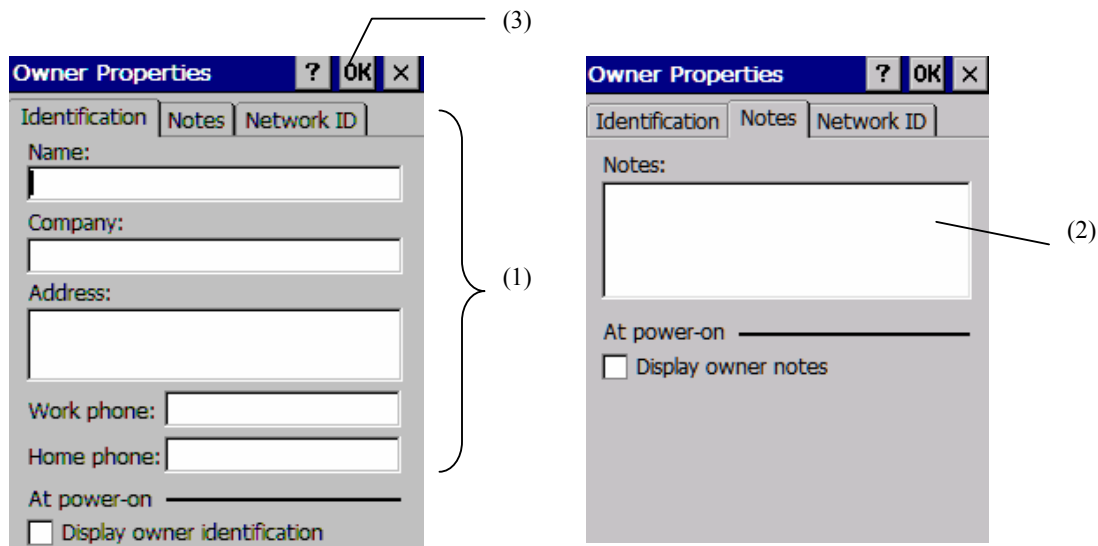


Double-tap an icon to configure the environment of the item indicated below the icon.

To close the iPAD Control Panel, tap the [x] button or [File] - [Close].

10.2 Owner Information Properties

Double-tapping the "Owner" icon in the iPAD Control Panel opens the following dialog box.



(1) Owner Information

Specify information about the owner of the iPAD.

(2) Memo

Enter comments about the owner information.

(3) Canceling or registering the settings

Tapping the [x] button cancels the registration of the setting and closes the dialog box.

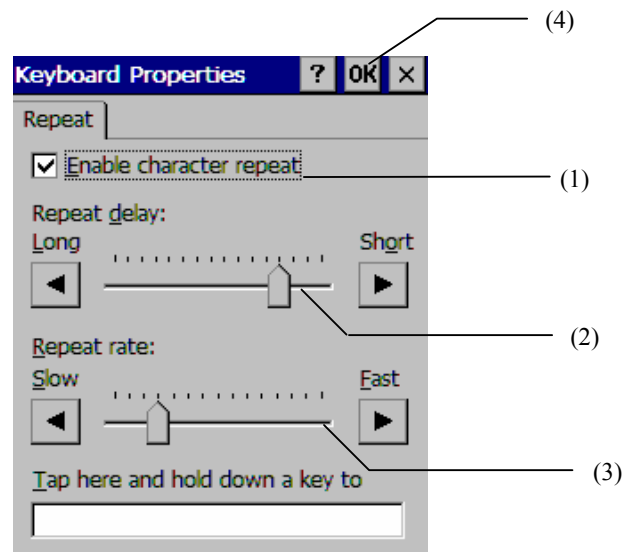
Tapping the [OK] button registers the setting and closes the dialog box.

Tip

- Up to three lines are used for the memo displayed at start of the system.
-

10.3 Keyboard Properties

Double-tapping the "keyboard" icon in the iPad Control Panel opens the following dialog box.



(1) Validate Character Repeat Setting

Specify whether the character input is to be repeated when the key is held down.

(2) Repeat Delay Time

Specify the time required to wait until the key is repeated in a held down state.

(3) Repeat Interval

Specify the repeat interval used when the key is held down.

(4) Canceling or registering the settings

Tapping the [X] button cancels the registration of the setting and closes the dialog box.

Tapping the [OK] button registers the setting and closes the dialog box.

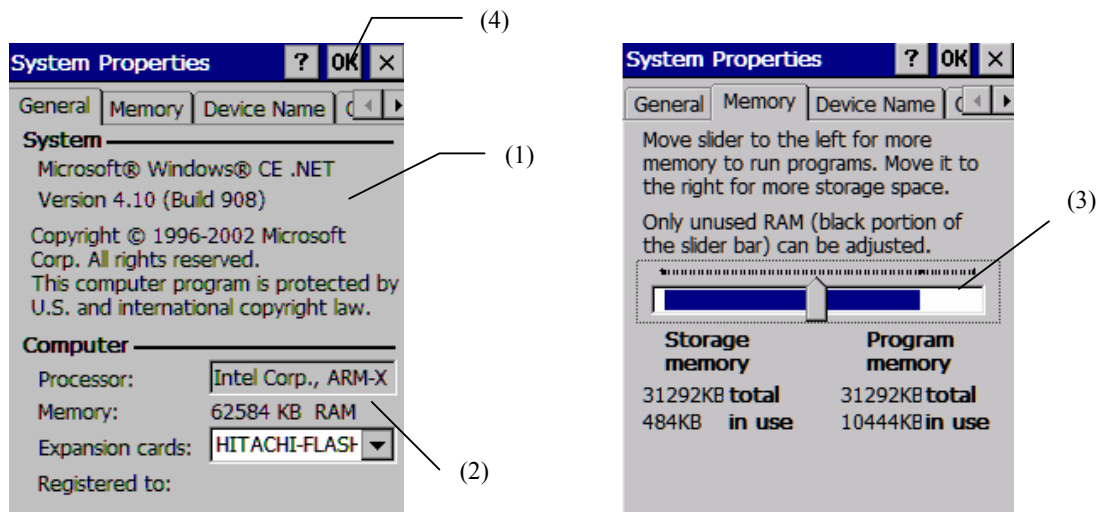
Tip

- Repeat character input is valid only for the mechanical keys on the iPad.
It is not valid for the screen keyboard.
-

10.4 System Properties

Double-tapping the "System" icon in the iPAD Control Panel opens the dialog box shown below.

Use pages of the dialog box to confirm the hardware information, software information, and memory (RAM) information of the iPAD.



(1) System information

Displays operating system (OS) information for the iPAD.

(2) Computer information

Displays the CPU, total memory (RAM) capacity, and card information for the iPAD.

(3) Memory (meter)

Set how iPAD memory (RAM) is to be divided.

- Data storage memory
Used for saving data as a file.
- Program execution memory
Used for the internal execution of an application program.

(4) Canceling or registering the setting

Tapping the [x] button cancels the registration of the setting and closes the dialog box.

Tapping the [OK] button registers the setting and closes the dialog box.

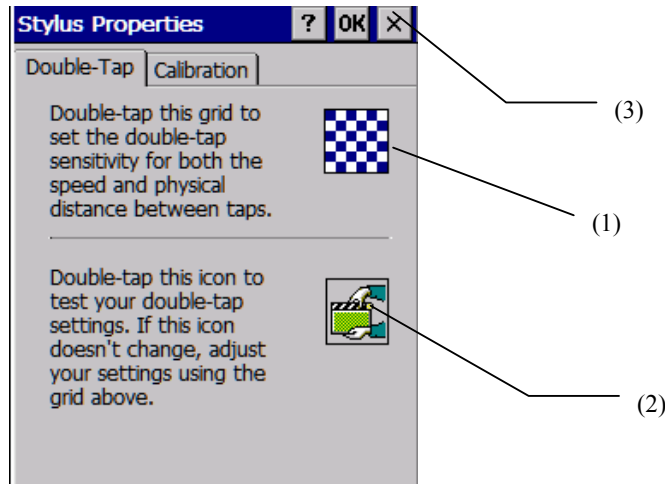
Important

- Reducing the data storage memory may prevent data from being saved as a file.
Reducing the program execution memory may cause a program error because of insufficient memory to execute the application program.
- A change in the division of the memory area is not saved in the registry. Therefore, if the main or backup battery of the iPAD loses its charge and restoration is performed, the division of the memory area division is not restored. To use the changed division of the memory area, you should make the setting with the API of the application when it is registered at startup.

10.5 Stylus Properties

Double-tapping the "Stylus" icon in the iPad Control Panel opens the dialog box shown below.

You can set operating information for the stylus on the touch panel of the iPad.



(1) Double-tap icon 1

Set the speed interval of the double-tap by double-tapping this icon.

Setting by the double-tap changes the checkerboard pattern of the icon.

(2) Double-tap icon 2

Use this icon to test the speed interval of a double-tap.

Double-tapping opens or closes the icon.

(3) Canceling or registering the settings

Tapping the [x] button cancels the settings and closes the dialog box.

Tapping the [OK] button registers the settings and closes the dialog box.

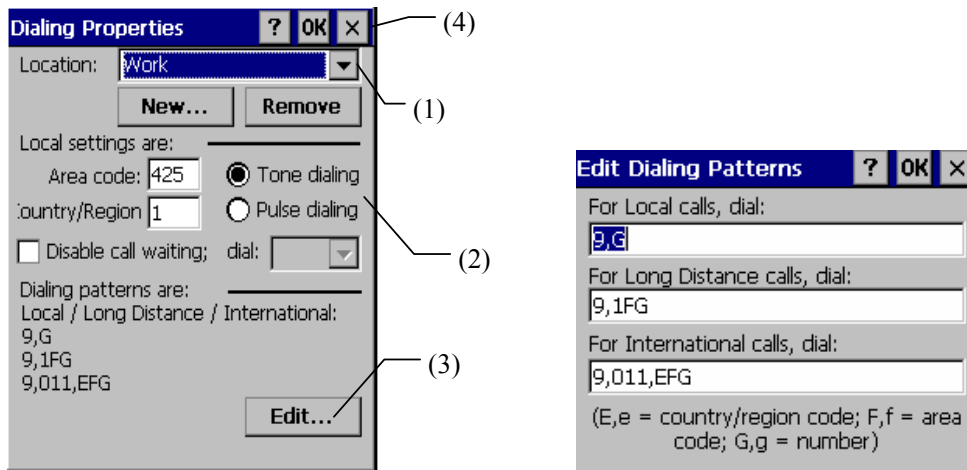
Tip

- For information about calibrating the touch-panel, see "Calibrating the touch screen" in Chapter 6.2.
-

10.6 Dialing Properties

Double-tapping the "Dialing" icon in the iPAD Control Panel opens the dialog box shown below.

Use the dialog box to configure the settings required to make a call by dialing to the public switched telephone network.



(1) Call origination source

Select a dialing pattern name to be configured or to be used to make a call by dialing to the public switched telephone network.

In addition, a new pattern can be added or the pattern being displayed can be deleted.

(2) Setting the telephone line

Set the detailed information about the telephone line.

- Area code
Enter the default area code for the location where dialing originates.
- Country/Region
Enter the country code used to make an international call.
- Telephone line
Select whether the telephone line uses "Tone dialing" or "Pulse dialing."
- Disable call waiting
Disable call waiting when the telephone line has the call-waiting function.

(3) Editing a dialing pattern

Tapping the "Edit" button displays a dialog box for editing the dialing pattern.

Set the dialing pattern for local calls, long-distance calls, and international calls.

Each dialing setting conforms to the following format: E,e = country code; F,f = area code; G, g = telephone number. If an outside line is required, a "0" must be dialed.

(4) Canceling or registering the settings

Tapping the [x] button cancels the registration of the settings and closes the dialog box.

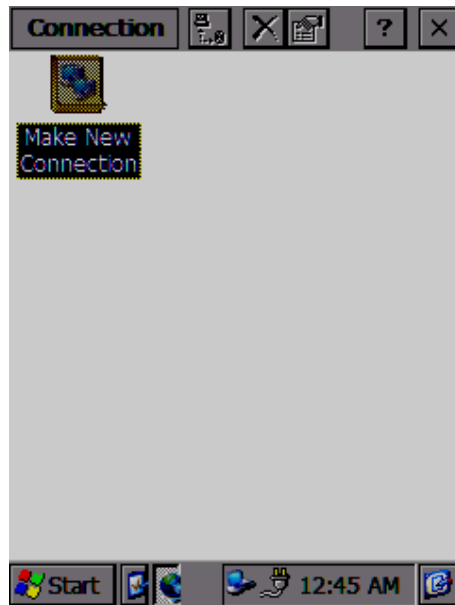
Tapping the [OK] button registers the settings and closes the dialog box.

10.7 Network and Dial-up Connection Properties

If a radio card and associated RF card drivers have been loaded into the iPAD, an icon resembling a computer terminal will appear in the system tray at the bottom of the iPAD screen. Double click on this icon and the dialog found in section 10.7.1 will appear.

Otherwise, double-tapping the "Network and Dial-up Connections" icon in the iPAD Control Panel opens the following dialog box to set up a network connection.

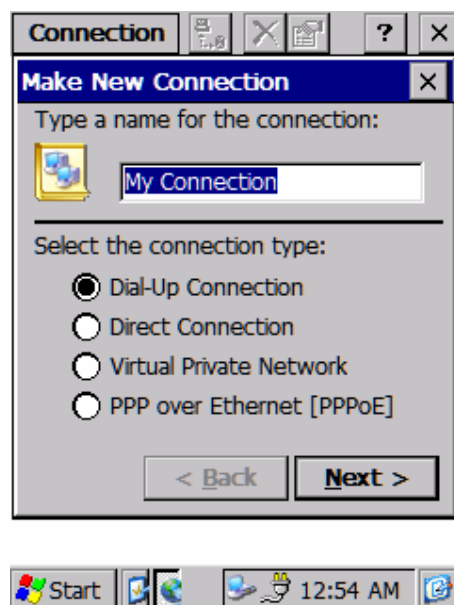
(1)



(1) Make New Connection icon
Select to build a network connection.

(2) 'X' button
Select to terminate connection dialog.

(2)



(1) Name for connection
Type the name of connection.

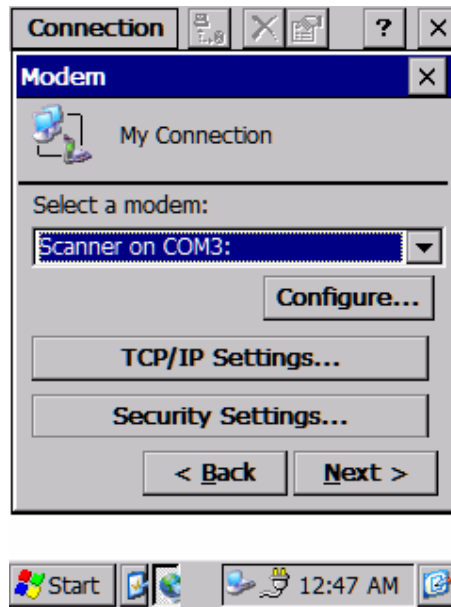
(2) Connection type
Check the appropriate connection type:

- Dial-up connection
- Direct connection
- Virtual Private Network
- PPP over Ethernet

(4) Next/Back buttons
Allows movement forward and backward through the dialog screens.

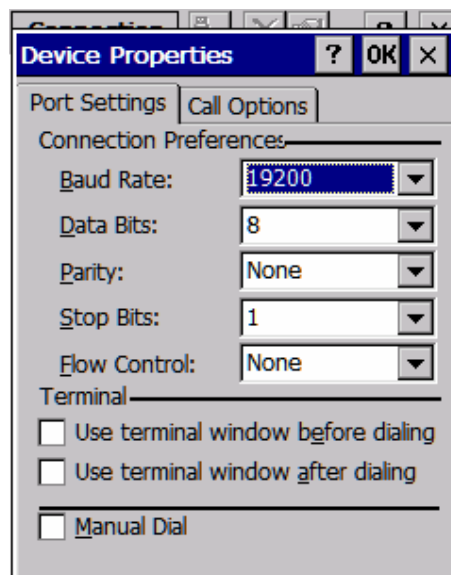
(5) 'X' button
Select to terminate connection dialog.

(3)



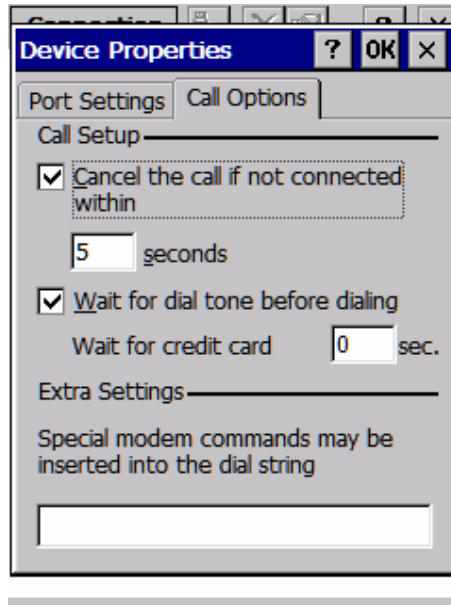
- (1) Configure button
This selection is only active if the connection types of "Dial-up" or "Direct" are chosen. Allows modifying call option settings found on screens (4) and (5).
- (2) TCP/IP settings button
Allows configuration of network address and entry of name servers, etc.
- (3) Security settings button
Allows configuration of encryption, authentication, and various password setting options.
- (4) Next/Back buttons
Allows movement forward and backward through the dialog screens.
- (5) 'X' button
Select to terminate connection dialog.

(4)



- (1) Baud rate options
Allows selection of baud rates from 110 to 115kb.
- (2) Data bit options
Allows selection of data bits from 4 to 8.
- (3) Parity setting options
Allows selection various parity rates.
- (4) Stop bit setting options
Allows selection various bit rates.
- (5) Flow control setting options
Allows selection of either hardware or software control.
- (6) Terminal settings
Allows selection of behavior of terminal windows during dialing.
- (7) 'OK' and 'X' buttons
Select to accept or terminate connection setting dialog.

(5)



- (1) Call setup checkbox
 - Select to either cancel if not connected within a specified time period
 - Select to wait for dial tone before initiating dial
 - Configure for credit card acceptance
- (2) Special modem commands box
 - Enter any special modem commands into this box.
- (3) 'OK' and 'X' buttons
 - Select to accept or terminate connection setting dialog.

10.7.1 Setting the Network Properties

The following screens allow the user to set up appropriate connection information for an 802.11b wireless network connection.

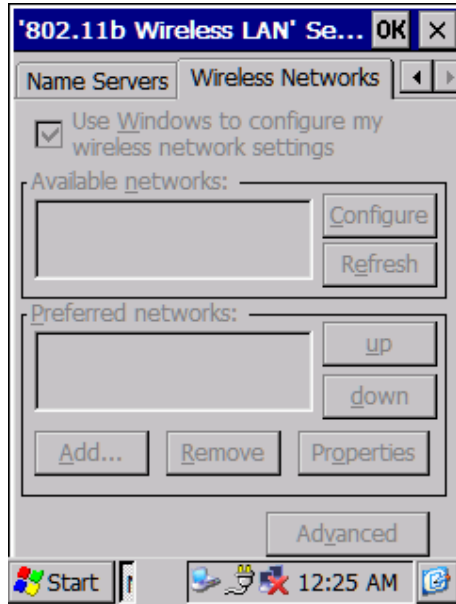
After changing settings, tap [OK] to close the dialog box.

The screenshot shows the '802.11b Wireless LAN' Settings dialog box with the 'Name Servers' tab selected. The dialog has a title bar with '802.11b Wireless LAN' Se... and buttons for 'OK' and 'X'. Below the title bar are three tabs: 'IP Address', 'Name Servers', and 'Wireless'. The main content area contains the text: 'An IP address can be automatically assigned to this computer.' Below this text are two radio buttons: 'Obtain an IP address via DHCP' (which is selected) and 'Specify an IP address'. Under 'Specify an IP address', there are three input fields for 'IP Address:', 'Subnet Mask:', and 'Default Gateway:', each with a vertical separator line in the middle.

- (1) Name Servers tab
Select to enter the various DNS and WINS configuration options.
- (2) DHCP/Static IP checkbox
Use this to either assign an IP via DHCP or specify a static IP.

The screenshot shows the '802.11b Wireless LAN' Settings dialog box with the 'Wireless LAN' tab selected. The dialog has a title bar with '802.11b Wireless LAN' Se... and buttons for 'OK' and 'X'. Below the title bar are three tabs: 'IP Address', 'Name Servers', and 'Wireless'. The main content area contains the text: 'Name server addresses'. Below this text are four input fields: 'Primary DNS:', 'Secondary DNS:', 'Primary WINS:', and 'Secondary WINS:', each with a vertical separator line in the middle.

- (1) Wireless LAN tab
Use this to view available AP's (Access Points) or associate to a specific AP.
- (2) DNS/WINS data entry boxes
Enter DNS or WINS configuration information here.



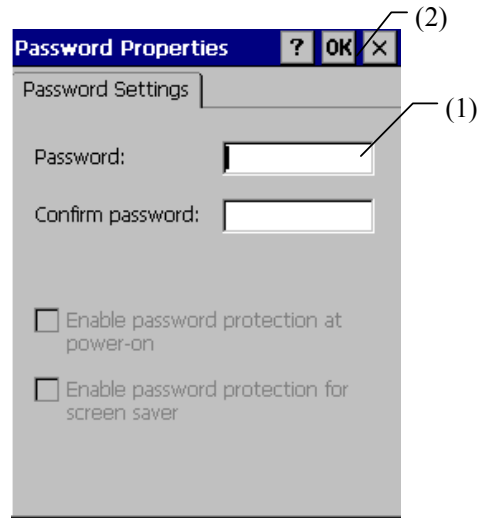
- (1) Available networks box
This is where broadcasting AP's will be available for selection.
- (2) Preferred Networks box
This is where you can either "Add", "Remove" or associate to an AP that is not in broadcast mode. Changing the "Properties" of an association is also supported.
- (3) Advanced button
You can configure or change the SSID or WEP keys of your AP link by pressing this button.

Tip

- Ask the network administrator about a DHCP server, IP address, DNS server, WINS server user name, password, domain, and other items.
-

10.8 Password Properties

Double-tapping the "Password" icon in the iPAD Control Panel opens the following dialog box.



(1) Password

A password can be set for the iPAD .

When a password is set, the same password must be entered a second time for confirmation.

(2) Canceling or registering the setting

Tapping the [x] button cancels the registration of the setting and closes the dialog box.

Tapping the [OK] button registers the setting and closes the dialog box.

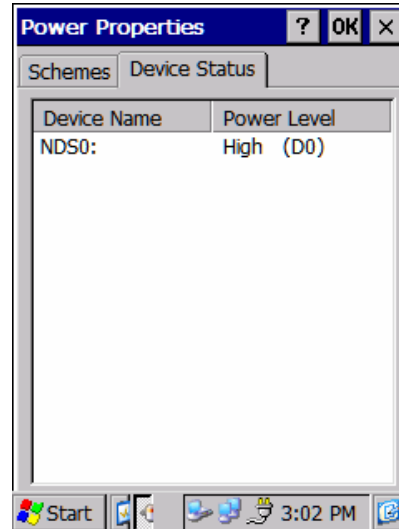
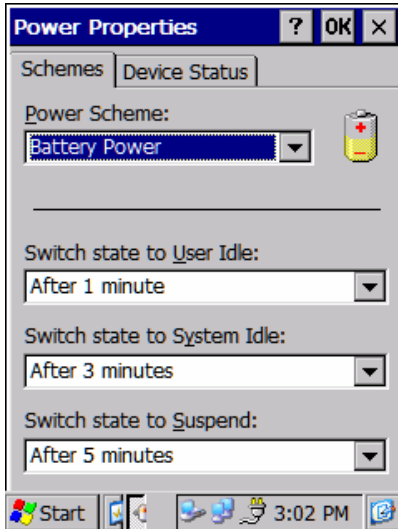
Important

- Because the password is not saved in the registry for the security reasons, it is not restored if the main or backup battery of the iPAD has lost its charge and restoration is performed.
-

10.9 Power Management Properties

The Power Properties dialog box is used to confirm current battery information and the timer settings for the automatic power-off function.

Double-tapping the "Power" icon in the iPAD Control Panel opens the following dialog boxes.



Power Schemes:

- (1) Both User and System idle setting boxes are not currently supported.
- (2) a. When Power Scheme option is set to "Battery Power":
 - Specify the idle time required until automatic power-off while on battery power. To prevent automatic power-off, select "Never" from the drop down list.
- b. When Power Scheme option is set to "AC Power":
 - Specify the idle time required until automatic power-off while on an external power. To prevent automatic power-off, select "Never" from the drop down list.
- (3) Canceling or registering the settings
 - Tapping the [x] button cancels the registration of the settings and closes the dialog box.
 - Tapping the [OK] button registers the settings and closes the dialog box.

Device Status:

Displays the current read status of the iPAD battery level.

Tips

- External power is supplied by connecting the cradle.
- To prevent automatic power-off while the main battery is being used, select "Disable."
- As the factory default, automatic power-off for the main battery is set to "3 minutes," and automatic power-off for external power is set to "Disable."
- An automatic power-off value can also be specified in the installation setting file (Config.hht). (BattPowerOff and ExtPowerOff values under [Control Panel])

10.10 Internet Option Properties

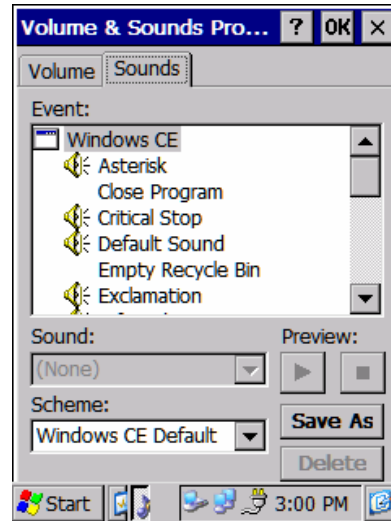
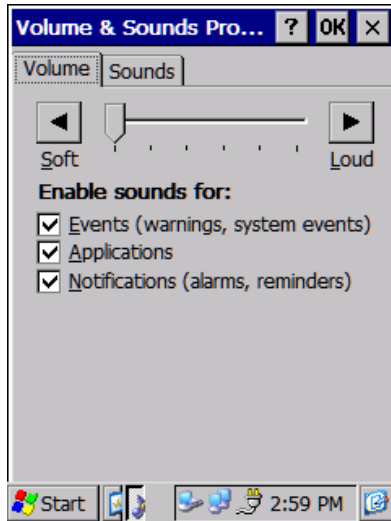
Refer to section 22 for configuring specific Internet Explorer browser options.

10.11 Volume & Sound Properties

The iPAD contains an audio interface to support audio functions.

Double-tapping the "Volume & Sounds" icon in the iPAD Control Panel opens the dialog boxes shown below.

Use Volume & Sound Properties dialog box to make settings related to sounds and volume.



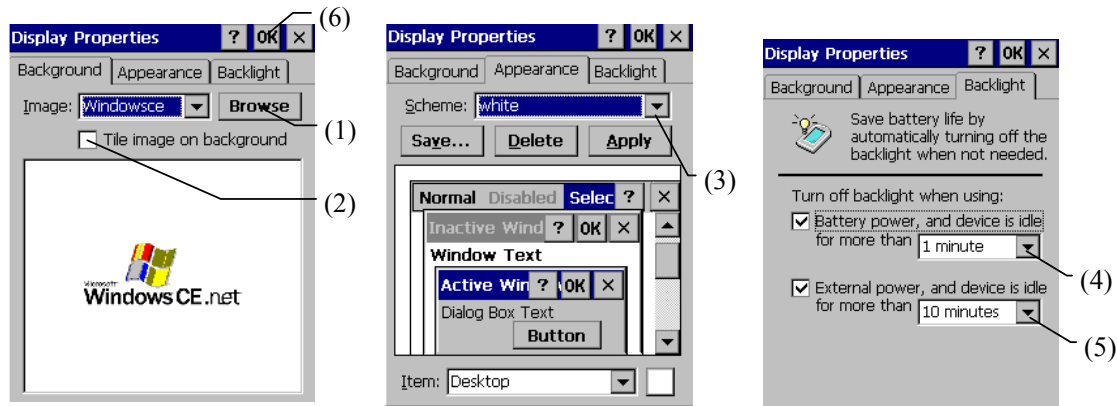
Tip

- The volume can be set in the system information.
- To obtain the system information, see Chapter 6, "Setting Up the iPAD".

10.12 Display Properties

Use the Display Properties dialog box to customize the desktop and windows and to set automatic power-off for the front light.

Double-tapping the "Display" icon in the iPAD Control Panel opens the following dialog box.



(1) Pattern

Select the pattern (bit map) to be displayed desktop background.

(2) Displaying and arranging the pattern in the background

When this check box is selected, the specified pattern displayed and arranged as the desktop background.

(3) Design (color arrangement)

Select the color for each part of the window.

(4) Turn off the front light automatically (when using the battery)

Specify the idle time required until the front light is automatically turned off when the iPAD is being powered by the main battery. Clear this check box to disable the function that automatically turns off the front light.

(5) Turn off the front light automatically (when on external power)

Specify the idle time required until the front light is automatically turned off when the iPAD is being powered by external power. Clear this check box to disable the function that automatically turns off the front light.

(6) Canceling or registering the settings

Tapping the [x] button cancels the registration of the settings and closes the dialog box.

Tapping the [OK] button registers the settings and closes the dialog box.

Tips

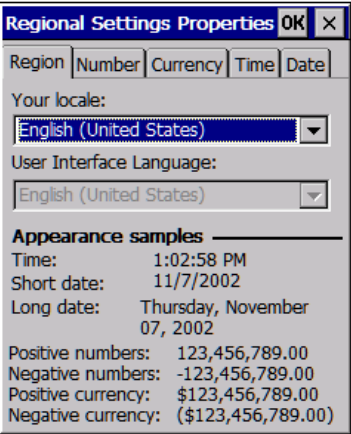
- The front light can be set with keys while it is being used.
- Automatic power-off of the front light when the main battery is used is set to "1 Min" as the factory default. Automatic power-off of the front light when external power is used is set to "10 Min" as the factory default.
- An automatic front light power-off value can also be specified in the installation setting file (Config.hht).

(BattBackLightOff and ExtBackLightOff values under [Control Panel])

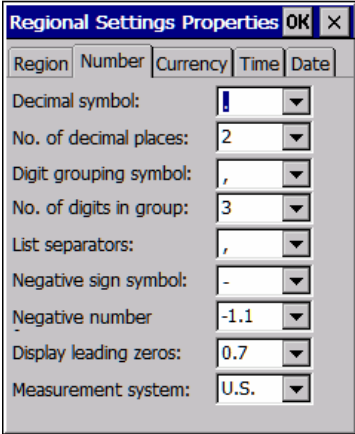
10.13 Regional Settings Properties

Double-tapping "Regional Settings" in the iPAD Control Panel opens the following dialog box.

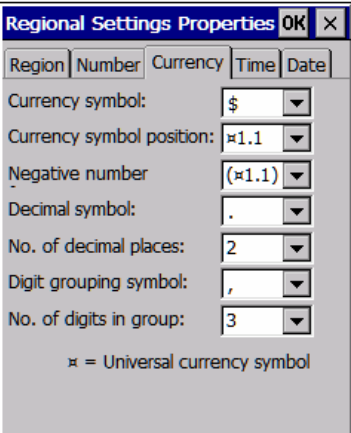
(1)



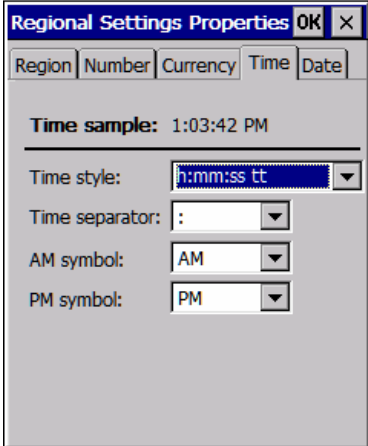
(2)



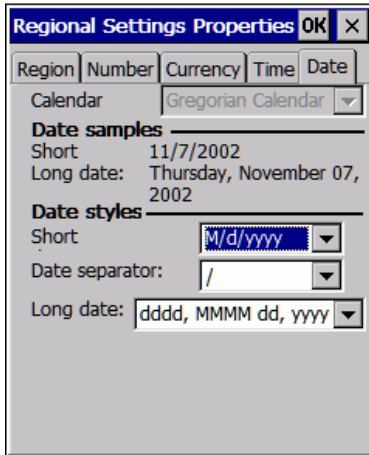
(3)



(4)



(5)



(1) Region

Displays regional settings for your locale.

(2) Number

Displays the way in which numbers are displayed and formatted.

(3) Currency

Displays the way in which currency values are displayed and formatted.

(4) Time

Displays the way in which the time of day is displayed and formatted.

(5) Date

Displays the way in which the date is displayed and formatted.

Tapping the [x] button cancels the registration of the settings and closes the dialog box.

Tapping the [OK] button registers the settings and closes the dialog box.

Important

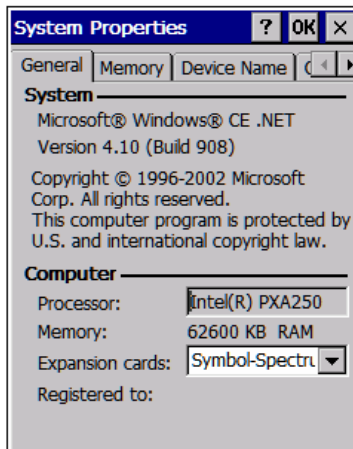
- The iPad is customized for the United States. If the settings are changed, information may not be displayed correctly. Do not change the region.
-

10.14 System Properties

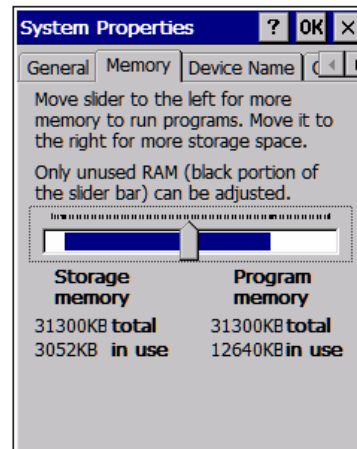
Use the System Properties dialog box to set the information for establishing communication with a desktop PC.

Double-tapping the "System" icon in the iPAD Control Panel opens the following dialog box.

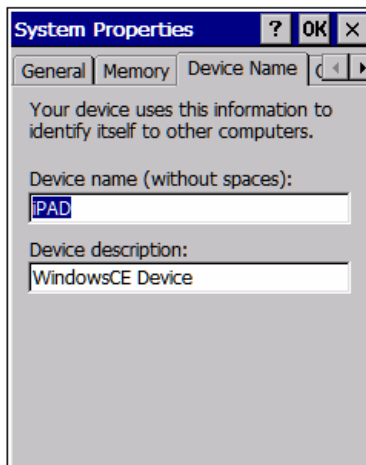
(1)



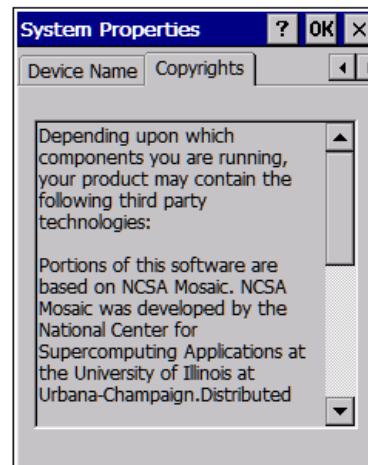
(2)



(3)



(4)



(1) General

Displays the system name of the iPAD and provides a description.

(2) Memory

Displays the amount of available memory.

(3) Device Name

Enter a name for the iPAD (device name) and a description. This information is used for communication with the desktop PC.

(6) Copyrights

Displays the various copyright information including third party software.

Tapping the [x] button cancels the registration of the settings and closes the dialog box.

Tapping the [OK] button registers the settings and closes the dialog box.



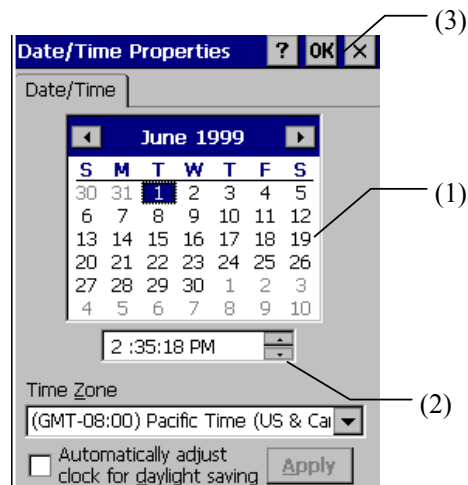
Tip

- System properties must be set to communicate with a desktop PC.
-

10.15 Date and Time Properties


Use the Date/Properties dialog box to set the current date and time.


Double-tapping the "Date/Time" icon in the iPad Control Panel opens the following dialog box.



(1) Date calendar

Switch the calendar to the current year and month and select the current day.

Use the  button to display the calendar for the previous month.

Use the  button to display the calendar for the next month.

Tapping the number part of a year enables the year to be entered directly from the screen keyboard.

Tapping the number part of a month directly displays a list of months January to December. A month can be selected from the list.

(2) Current time

Specify the current time in "hour:minute:second" format.

(Example) For 23 hours:59 minutes:00 second, enter "23:59:00."

(3) Canceling or registering the date and time

Tapping the [x] button cancels the registration of the date and time.

Tapping the [OK] button registers the set date and time.

Tips

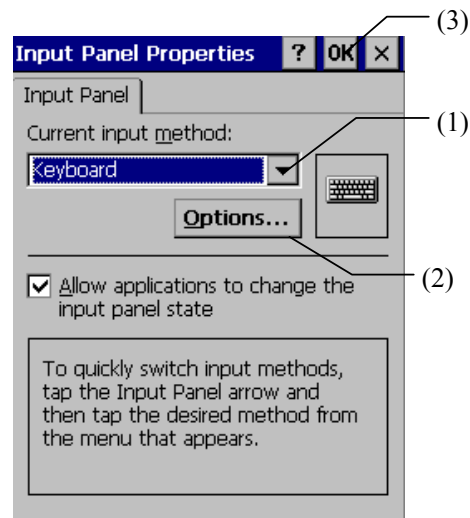
- If the date and time registration are canceled with the [x] button, the date and time are not updated.
- You can specify the region that is the origin of the date and time in Time Zone.
- Select a time zone before setting the date and time.

If the time zone is changed after the date and time have been set, the time is automatically converted to the time relative to the Greenwich Mean Time.

10.16 *Input Panel Properties*

Use the Input Panel Properties dialog box to select the type of the screen keyboard.

Double-tapping the "Input Panel" icon in the iPad Control Panel opens the following dialog box.



(1) Current input method

Select the input panel to be displayed and used for input as the screen keyboard.

The following screen keyboard is available for the input panel:

- Keyboard

Only alphanumeric characters can be entered.

(2) Options button

Displays the options for the screen keyboard currently selected.

(3) Canceling or registering the settings

Tapping the [x] button cancels the registration of the settings and closes the dialog box.

Tapping the [OK] button registers the settings and closes the dialog box.

Tips

- For information about using the screen keyboard, see Chapter 7, "Using the Screen Keyboard".
- The input panel is set to "Keyboard" (alphanumeric characters) as the factory default.

11 Installation

11.1 Preparations for Installation

The following preparations are required before application programs can be installed in the iPAD:

(1) Creating an installation configuration file (config.hht)

Before application programs are installed, definitions for them must be created. Define these items in the installation setting file (config.hht). This is where the files to be installed into the iPAD and the operating environment (control panel settings) will be found. These options will be automatically configured during installation.

For the contents of the installation setting file and the coding method, see Chapter 5, "Before Setting Up the iPAD".

(2) Creating installation media (for installation from a storage card)

For installation on the iPAD from the storage card, a directory in which application programs are stored must be created.

Copy the main application program, required data files, and any other required files to the installation media. Also copy the installation setting file (config.hht) to the root folder on the installation media.

(3) Preparations for communication (for installation via communication that uses a wireless LAN and ActiveSync)

To establish communication between the iPAD and a desktop PC, prepare the wireless LAN environment, or the cradle and USB cable.

11.2 Installing application programs

After completing the installation preparations, start installation of the application programs. Start the setup menu, then tap [2.Install the application] on the setup menu to start installation.

For the installation method and procedure, see Chapter 6, "Setting Up the iPAD".

12 Device Properties

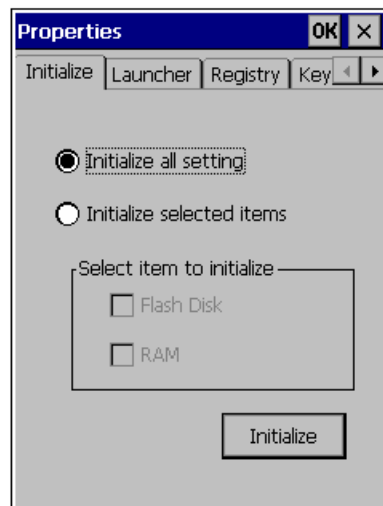
This chapter describes how to set the properties of the iPAD.

The iPAD supports the following five property functions:

- iPAD initialization function
Initializes the iPAD to restore it to its initial setup state.
Use this function to reinstall application programs.
- Launcher registration
Registers an application program launcher with function keys.
- Function for saving and restoring the registry
Saves the current registry information as a file and restores the saved registry file.
- Key-press control function
Limits operation of the iPAD when a specific key is pressed.
- Font setting function
Enables the system font type and size to be changed and enables bolding and italic to be used.

To set a device property, start the setup menu and then tap [3.iPAD Configuration] on the setup menu.

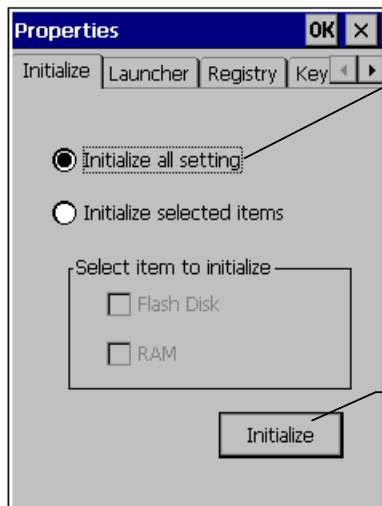
The following device property dialog box opens.



13 Initializing the iPAD

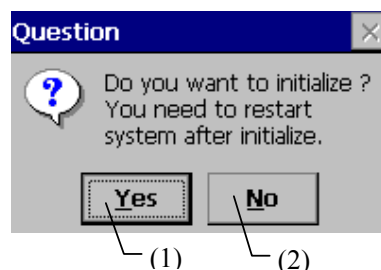
How the iPAD is to be initialized can be selected.

Select the [Initialize] tab in the Properties dialog box of the iPAD to display the following page.



- Selecting an initialization item
Select the initialization item.
"Initialize all setting" initializes all of the system information storage area and RAM area. Select this item for ordinary initialization.
- Initialize button
Tap the [Initialize] button to start initialization.

When initialization starts, the following confirmation message appears.



(1) [Yes] button

Used to perform initialization. A screen indicating the progress of initialization is displayed during initialization.

If initialization is done with "Initialize all setting" or "RAM" specified, power is automatically turned off after initialization. The initial setup state is restored on restart. However, if an application has already been installed, restoration is performed automatically when RAM is installed.

(2) [No] button

Used to cancel initialization. The setup menu is displayed again.

Important

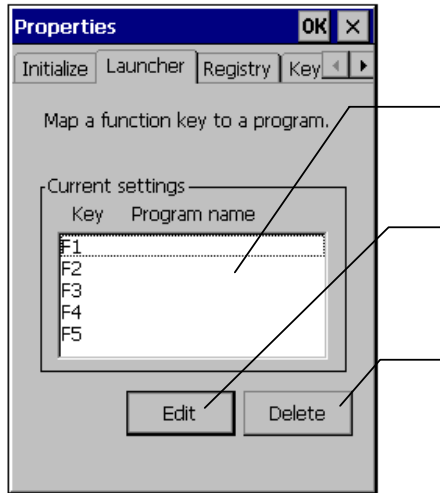
- When the iPAD is initialized, the initial setup state is restored. When performing initialization, be sure to follow the instructions of the application program developer.

14 Registering a launcher

This item describes how to register a launcher.

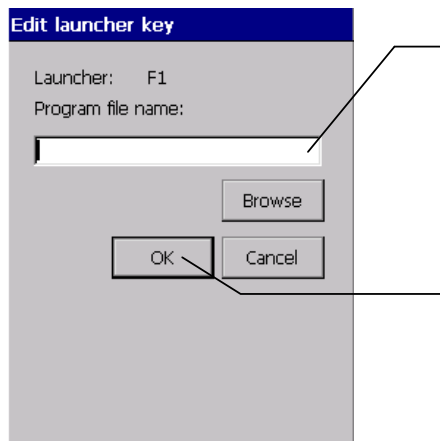
Launcher refers to the assignment of application programs to function keys. The launcher function is used as a simple means of starting programs during operation.

Select the [Launcher] tab in Properties dialog box to display the following dialog box.



- (1) Selecting a launcher key
From the list, select the function key you want to make a launcher key or the function key whose launcher information you want to delete.
- (2) Editing the launcher key
Tapping the [Edit] button displays the edit screen for the specified function key.
- (3) Deleting the launcher key
Tapping the [Delete] button deletes the launcher information for the selected key.

The Launcher key edit screen is shown below.



- (1) Program file name
Using the absolute path, specify the file name of the program that is started when the specified function key is pressed.
- (2) Registering the launcher program
Tap the [OK] button to register the specified function key as a launcher key. If the [Cancel] button is tapped, no registration takes place.

Tips

- The iPAD uses the F1 to F4 function keys (F3 and F4 are used in combination with the [SFT] key).
- A launcher can be registered by specifying a program name and parameters.
- If the name of the launcher program contains a space, specify the file name inside in double quotation marks ("").
- The launcher program name can also be specified in the installation setting file (config.hht). (F1 to F4 values under [Launch])

15 Saving and restoring the registry

This item describes how to save and restore the current registry.

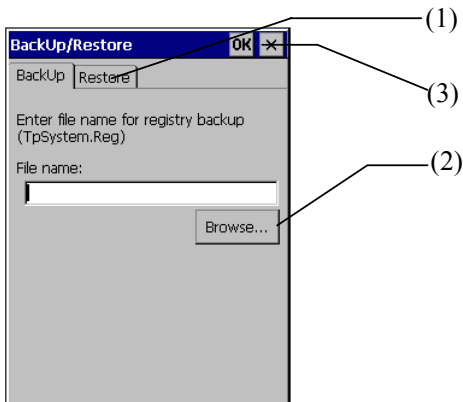
Select the [Registry] tab in Properties dialog box to display the following dialog box.



(1) Starting saving or restoring

Select the [Select Backup or Restore] button.

The following dialog box for saving and restoring opens.



(1) Selecting saving or restoring

To save the registry, select the [Backup] tab. To restore the registry, select the [Restore] tab.

(2) Entering the file name

Enter the name of the file to be saved or restored. Tapping the [Browse] button opens a dialog box for selecting a file for [File name].

(3) Canceling or starting saving or restoring

Tapping the [x] button cancels saving or restoring and opens to the Properties dialog box.

Tapping the [OK] button executes saving or restoring. When the processing is complete, the Properties dialog box reappears.

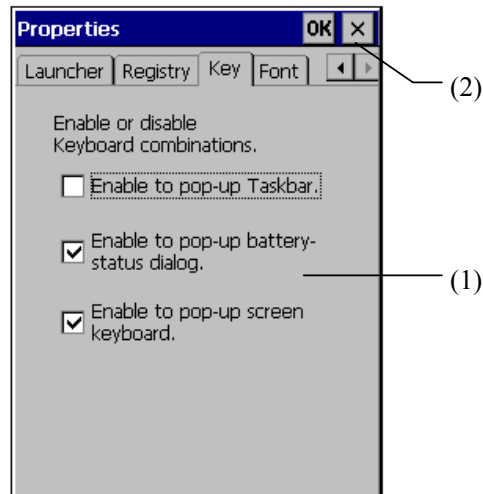
Tips

- The registry cannot be saved unless an application program is installed.
- The settings in the restored registry take effect after the iPAD has been restarted.

16 Controlling operation by pressing keys in combination

This item describes how to control operations (enabling or disabling) when specific keys are pressed in combination.

Select the [Key] tab from the Properties dialog box to display the following dialog box.



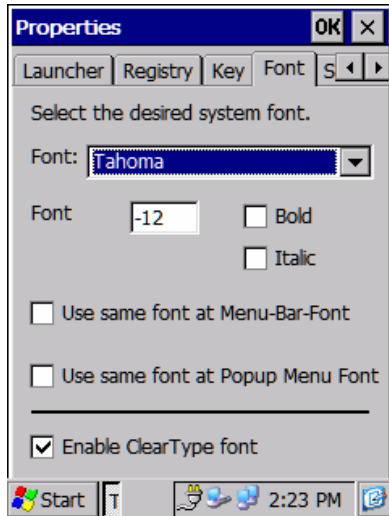
- (1) Specifying whether a function is enabled when the keys are pressed
 - To enable a function when the keys are pressed, select this check box.
 - To disable a function when the keys are pressed, clear this check box.
- (2) Registering the settings
 - Tapping the [OK] button registers the settings.

Tips

- The iPAD supports the following key combinations:
 - Taskbar display: [SFT] key + [CAN] key
 - Remaining battery charge and volume display: [SFT] key + [ENT] key
 - Screen keyboard display: [SFT] key + [0] key
 - This setting takes effect after restart.
-

17 Setting the system font

This item describes how to change the system font used by the iPAD. Select the [Font] tab from the Properties dialog box to display the following dialog box.



(1) Font

Displays the selected font name (system font name).

From the list, select a new font.

(2) Size, bold, and italic

Displays the size of the current system font and whether bold or italic has been selected.

Specify a new font size and whether bold or italic is to be used.

(3) Other fonts

To change the menu bar and pop-up font together with the system font, select these check boxes and tap the [OK] button. The system font is definitely changed. To change only the menu bar font, use the following procedure:

Example: Setting only the menu bar font to bold

1. Select "Bold" and "Use same font at Menu-Bar-Font..." on the Font tab and tap the [OK] button. (The system font and the menu bar font become bold.)
2. Open the font properties again, clear "Bold", and then tap the [OK] button. (Only the system font is changed, since "Menu Bar..." is not selected.)

(4) Enable Clear Type font

Check this box to activate enhanced font graphics using clear type.

(5) Registering the font

Tap the [OK] button to register the font changes.

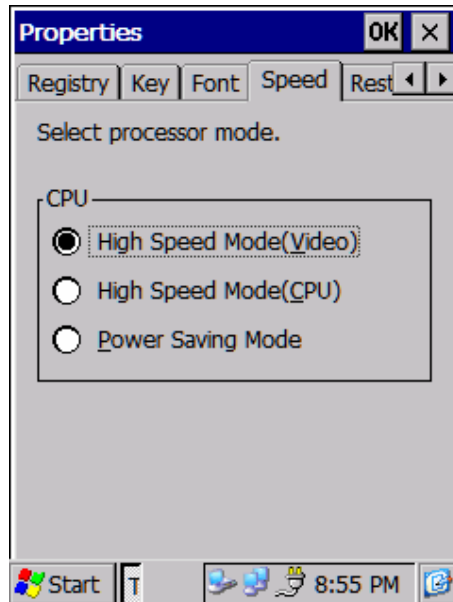
Tips

- If the system font is changed, the font used by the system is changed. Normal operation could be disabled (for example, the display position is skewed), depending on the specified font. This setting takes effect after restart.

18 Setting the system speed

This item describes how to change the system speed used by the iPAD.

Select the [Speed] tab from the Properties dialog box to display the following dialog box.



(1) High Speed Mode(Video)

By selecting this option, the user requests that the iPAD runs at a higher video mode speed. The CPU will run at approximately 333 Mhz while the bus speed will run at a rate of 170 Mhz that will allow faster performance for applications that utilize high amounts of video display.

(2) High Speed Mode(CPU)

By selecting the option, the user requests that the iPAD run at a higher CPU clock speed. The CPU will run at approximately 400 Mhz and the bus speed will run at a rate of 100 Mhz that will allow faster performance for applications that utilize high amounts of numeric processing.

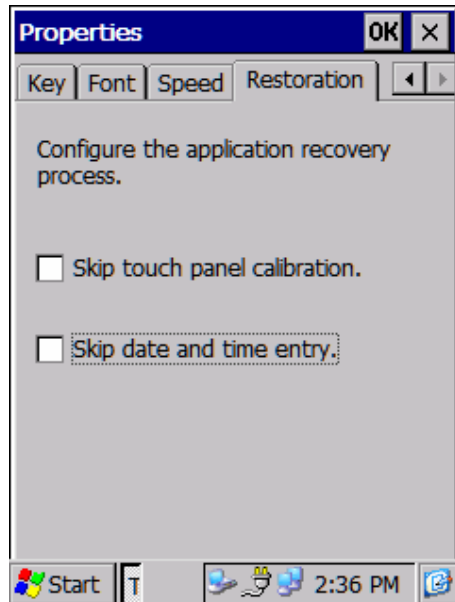
(3) Power Saving Mode

By selecting this option, the user requests that the iPAD runs at a lower CPU clock speed. The CPU will run at approximately 200 Mhz which will help to reduce the amount of CPU power consumption from the system.

19 Restoration

This item describes how to set the system restoration options during the application recovery process.

Select the [Restoration] tab from the Properties dialog box to display the following dialog box.



(1) Skip touch panel calibration

By checking this option you choose to instruct the iPAD to skip prompting for screen re-calibration during the recovery process.

(2) Skip date/time entry

By checking this option you choose to instruct the iPAD to skip prompting for the date and time entry during the recovery process.

20 Explorer

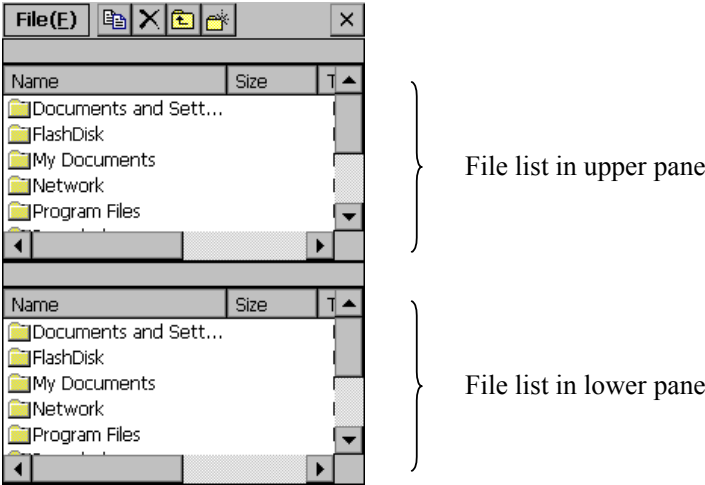
The iPAD supports an Explorer for file manipulation.

The iPAD Explorer enables files to be copied or deleted.

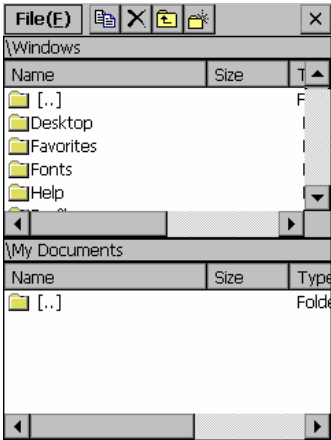
20.1 Referencing a file and folder

To manipulate iPAD files, start the setup menu and tap [5. iPAD Explorer] on the setup menu to start the iPAD Explorer.

Starting the iPAD Explorer opens the following window.

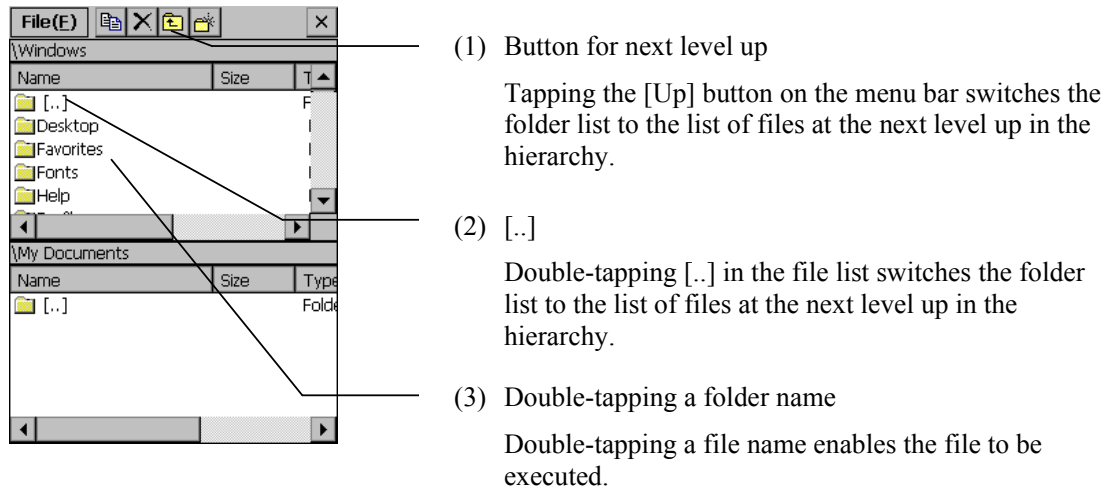


Double-tapping the folder name in the file list switches the list to the contents of that folder.




As an example, the folder "Windows" was opened. The list is switched to the file list in the folder.

The following operations can be performed during reference in the folder.



20.2 Copying files and folders

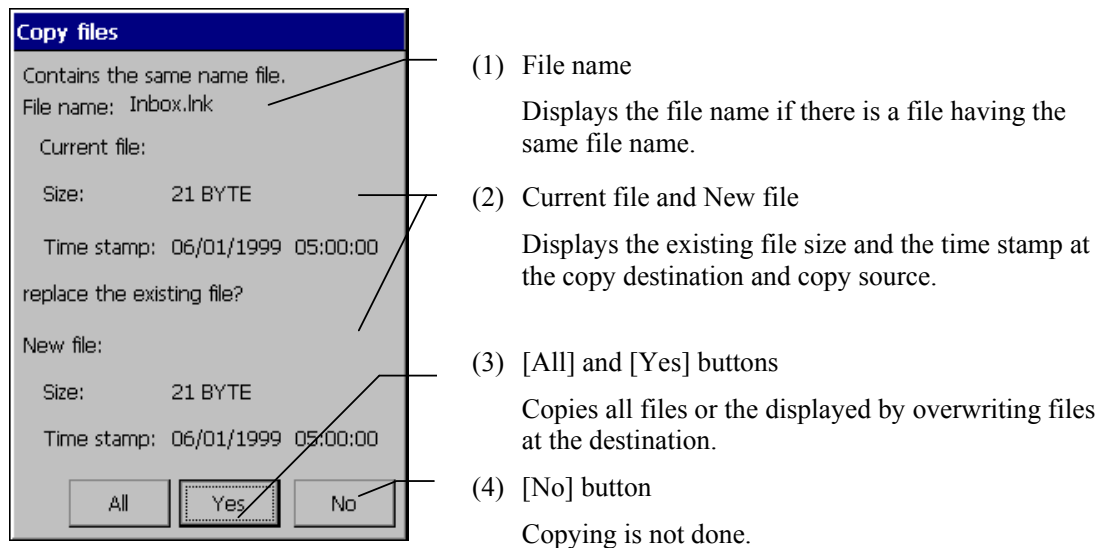
The iPad Explorer enables selected files and folders to be copied to the current folder location in the other pane.

Select the files and folders to be copied from the file list in one pane to the other pane and tap the [Copy] button on the menu bar .

The selected files and folders are copied to the other pane.


If a folder is selected for copying, all files and folders in the specified folder are copied.

If the copy destination contains the file having the same name, the following confirmation dialog box appears.

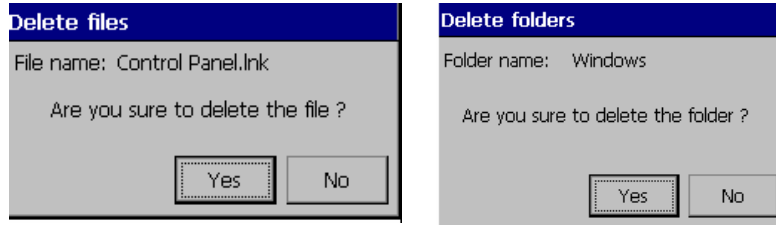


20.3 Deleting files and folders

The iPAD Explorer can also delete selected files and folders.

Select a file or folder from the file list and tap the [Delete] button  on the menu bar.

The following confirmation dialog box appears.




Tapping the [Yes] button deletes the specified file and folder.

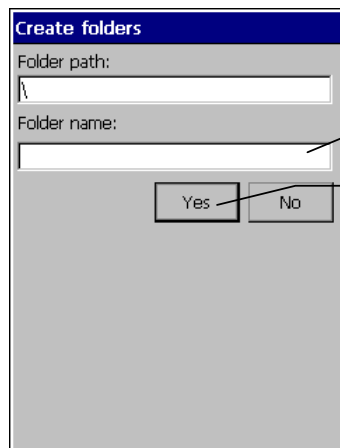
Tapping the [No] button cancels the deletion.

20.4 Creating a folder

The iPAD Explorer enables a new folder to be created at the current location in the selected file list.

Open the location where a folder is to be created in the file list, and tap the [Create Folders] button  on the menu bar.

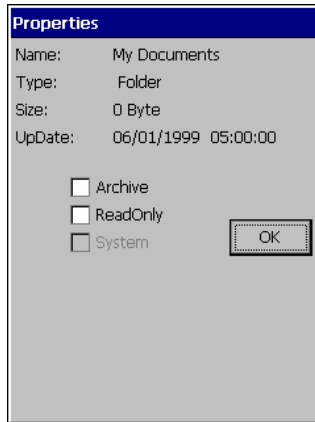
The following folder creation dialog box appears.



- (1) Folder name
Enter the name of the folder to be created.
- (2) Creating a folder
Tap the [Yes] button to create the folder.

20.5 Other functions

The iPAD Explorer also supports the following functions:



Displaying file properties

Enables the properties of the file selected from the file list to be checked.

Select [File] - [Properties] on the menu bar.



Displaying the available space

Displays the amount of free space in the current memory (RAM) and on the card.

Select [File] - [Free space] on the menu bar.

20.6 Notes on the iPAD Explorer

Important

- Do not use the iPAD Explorer to delete installed files.
If a file is deleted, no application program may operate or may be able to be saved.
- The files on the device copied using the iPAD Explorer are not files that are saved together with application programs.

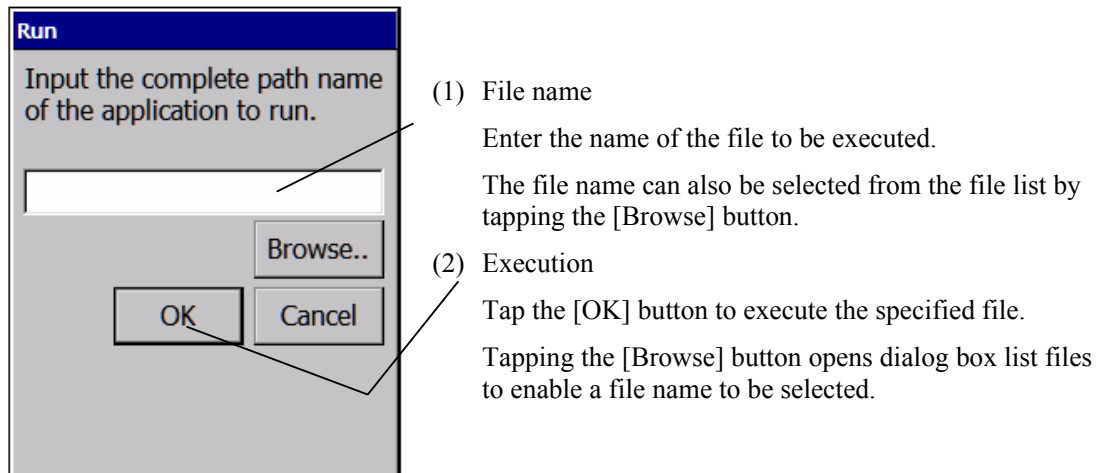
21 Run a program

A file can be executed by specifying its name in the setup menu of the iPAD.

Start the setup menu and tap [6. Run a program] on the setup menu.

The dialog box shown below opens.

To cancel execution by specifying a file name , tap the [Cancel] button.



Tips

- To execute a file with parameters, separate a file name and the parameters with a space.
- If a folder name contains a space (for example, Storage Card or Program Files), enclose the file name with double quotation marks (""). (To differentiate the filename from the parameters)
- The setup menu is a program for installing application programs or for setting environments. As such, it has no desktop, task bar, or task tray. Some programs may not be able to start normally.

22 Setting Debug Mode

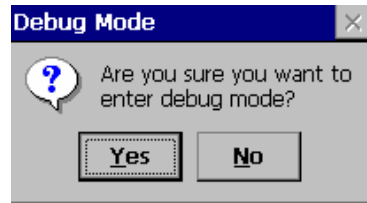
The iPAD has a "Debug Mode" function.

Debug mode enables the iPAD to be operated without installing an application program.

It is recommended that the debug mode be used for application program development.

Start the setup menu and tap [7. Debug mode] on the setup menu.

The following message appears.



If the [Yes] button is tapped here, the iPAD is set to debug mode and is automatically restarted.

Use the [No] button to return to the setup menu.

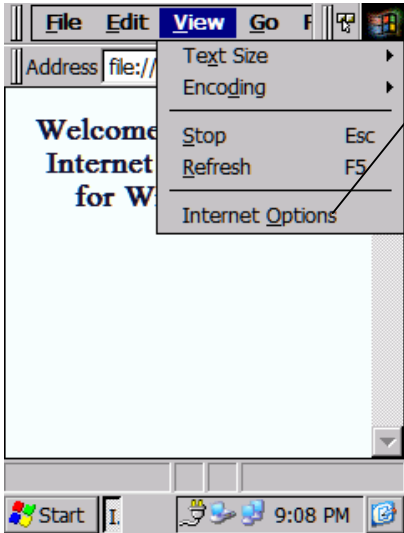
Tips

- Setting debug mode sets the following states:
 - Display of only the desktop (nothing is started.)
 - Display of the task bar in the foreground
 - In debug mode, if memory is erased, the system returns to the initial setup state.
 - Release debug mode by starting the setup menu and performing initialization.
-

23 Configuring Internet Explorer

The iPAD comes pre-installed with Windows CE Internet Explorer 5.5. This section highlights the various options available to configure this browser.

Start Internet Explorer from the Windows CE Start Menu.

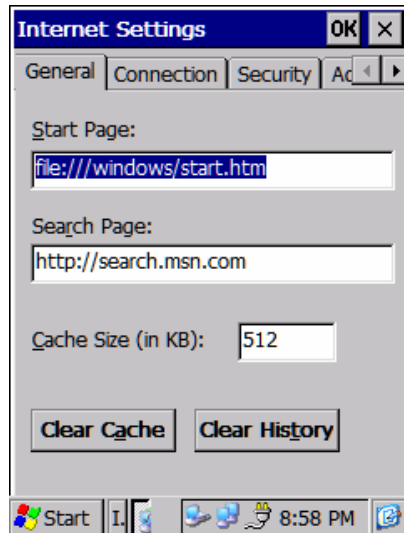


(1) Internet Options tab
Click here to set general browser options.

23.1 IE General Settings

The following screen provides the user with the ability to configure general type options including the maintenance of cache and history content.

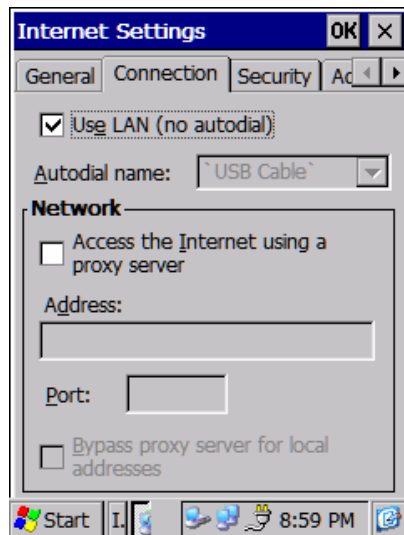
Tips



- (1) Start Page
Enter the name of the start-up or local html web page to load when the browser is started.
- (2) Search Page
Enter the default browser search page in this box.
- (3) Cache Size
Enter the size of the browser's cache in kilobytes.
- (4) Clear cache
Press this button to clear out the browser cache.
- (5) Clear History
Press this button to clear out the browser's history.

23.2 IE Connection Settings

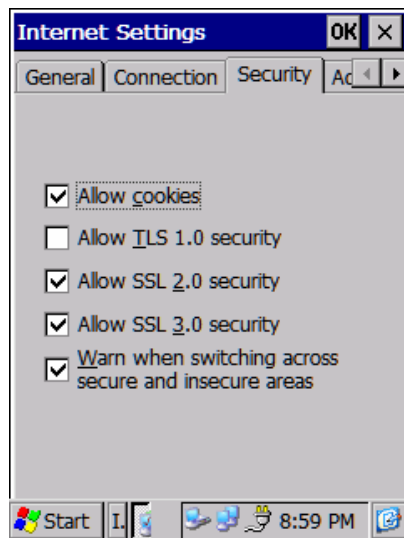
The following screen provides the user with the ability to configure how to establish connectivity to the internet.



- (1) Use LAN check box
Check this box to direct the browser to try a LAN connection versus a dial-up connection.
- (2) Autodial name
Enter the name of the autodial connection file here.
- (3) Use a Proxy server check box
Check this box if you connect to the internet via a proxy server. The following options will need to be set:
 - the address of the proxy server
 - the port of the proxy server
 - bypass proxy server if loading a local web page

23.3 IE Security Settings

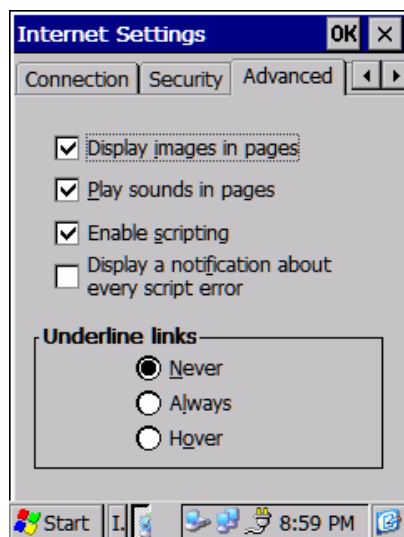
The following screen provides the user with the ability to configure various security options used by the browser.



- (1) Allow cookies check box
Check this box to allow the browser to store cookie entries.
- (2) Allow Transport Socket Layer (TLS) 1.0 check box
Check this box to specify sending/receiving information utilizing Transport Layer Security 1.0.
- (3) Allow Secure Socket Layer (SSL) 2.0 check box
Check this box to specify sending/receiving information utilizing Secure Socket Layer 2.0 security.
- (4) Allow Secure Socket Layer (SSL) 3.0 check box
Check this box to specify sending/receiving information utilizing Secure Socket Layer 3.0 security.
- (5) Warn when switching between secure unsecured areas
Check this box to warn the user when they are switching between secure and unsecured web sites.

23.4 IE Advanced Settings

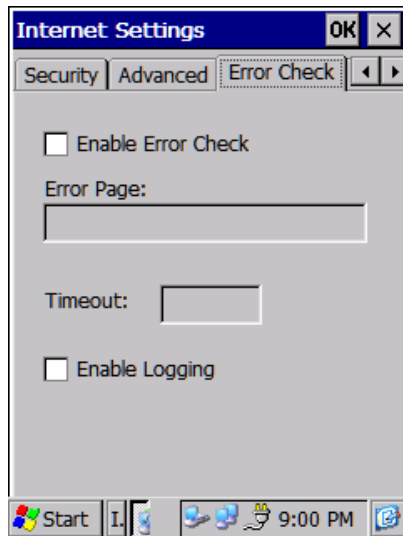
The following screen provides the user with the ability to configure various options pertaining to how the browser presents web pages.



- (1) Display images in pages check box
Specifies whether images can be displayed when web pages are loaded.
- (2) Play sounds in pages check box
Specifies whether music and other sounds can be played from web pages.
- (3) Enable scripting check box
Specifies whether scripting can be executed from web pages.
- (4) Display a notification about every script error check box
Specifies whether scripting errors should be displayed when they occur from a web page.
- (4) Underline links check box
Specifies whether to underline active web page links either Never, Always, or by Hovering.

23.5 IE Error Check Settings

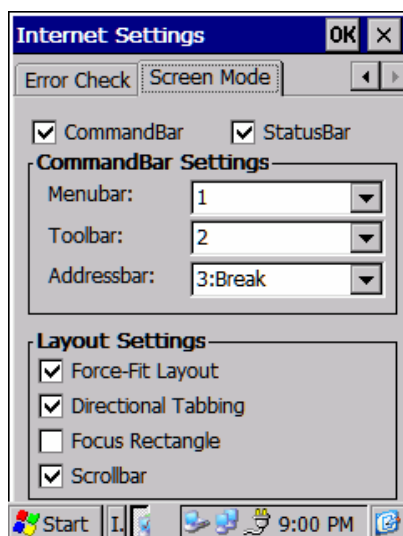
The following screen provides the user with the ability configure the Error Check settings inside the browser.



- (1) Enable Error Check box
Specifies whether web page error checking is activated.
- (2) Error Page edit box (with Error Checking on)
Specifies whether music and other sounds can be played from web pages.
- (3) Enable scripting check box (with Error Checking on)
Specifies whether scripting can be executed from web pages.
- (4) Enable Logging check box
Specifies whether scripting errors should be displayed when they occur from a web page.

23.6 IE Screen Mode Settings

The following screen provides the user with the ability configure how a web page is laid out and how the toolbars are presented.



- (1) CommandBar check box
Enables or disables display of the Command bar.
- (2) StatusBar check box
Enables or disables display of the Status bar.
- (3) CommandBar Settings box
 - Controls the Menu bar order of appearance.
 - Controls the Tool bar order of appearance.
 - Controls the Address bar order of appearance.
- (4) Layout Settings box
 - Set to "fit to screen" mode or "screen scraping".
 - Allows use of navigation buttons for field tabbing.
 - Enable or disable display of rectangle over web link.
 - Enables or disables horizontal Scroll bar.

24 Special Operations

24.1 If Memory has been Lost

The iPAD is designed so that it normally operates with a battery power.

Memory (RAM) can therefore be erased due to a dead battery.

Memory is generally backed up with a backup battery even though the main battery becomes dead. However, if the device is left for a certain time in this condition, no power is supplied to the iPAD and memory is erased.

If memory (RAM) of the iPAD has been erased after an application program has been installed, the following screen appears when the iPAD is started to warn the operator:



The iPAD supports an automatic restore function for application programs to guard against erasing of memory (RAM) erasing caused by a dead battery or another reason.

However, the following condition applies to automatically restore application programs:

<<Condition>>

- Applications must have already been installed according to the standard installation procedure.
For more information, see "Initial Setup."

Important

- The following are not restored even though the restore tool is executed: applications and data copied into the object store using a method other than the ordinary installation procedure.
-

24.2 Restoration Process

When an application program has been installed with the ordinary procedure, it can be automatically restored as follows:

- 1) Confirming Restoration by clicking on the "Restore" button

- 2) Calibrating the touch panel

If touch panel correction has started, tap the center of the target (+) with the stylus according to the instructions on the screen.

For the procedure for calibrating the touch panel, see "Calibrating the touch screen" in Chapter 6.

When the touch panel has been calibrated, the date and time properties dialog box appears.

- 3) Setting the date and time

If memory has been erased, the iPAD returns to the default date and time.

Set the current date and time.

For the procedure for setting the date and time, see "Date and time properties," in Chapter 2.

When the date and time have been set, the restore tool starts.

- 4) Starting Restoration

Automatic restoration for the application program and operating environment is executed.

- 5) Completing Restoration

When everything has been restored, the iPAD is automatically restarted.

After restart, the application program is started as the startup application.

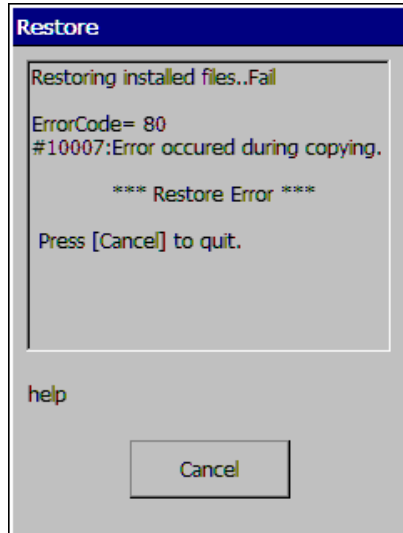


Tips

- The restored operating environment (registry information) takes effect after the iPAD is restarted.
 - If the application program cannot be restored automatically, a restoration failure error message appears. For the cause of the error, see Appendix B "Error Codes".
-

24.3 Restoration Failure

If a failure occurs during the restoration process, the following screen will appear. The user must click the "Cancel" button to abort the restoration process. At this point, a restoration of the iPAD is not available and the user must re-install the application software.



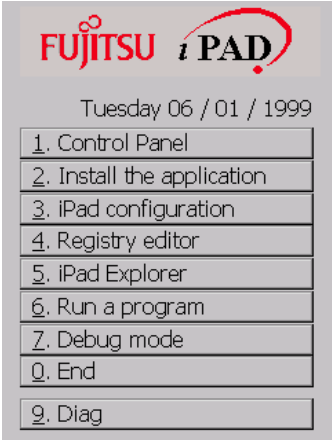
25 DIAG (Diagnostics Function)

The iPAD has the Diagnostic functions (self-diagnostics function) for verifying equipment operation.

25.1 Starting Diagnostics

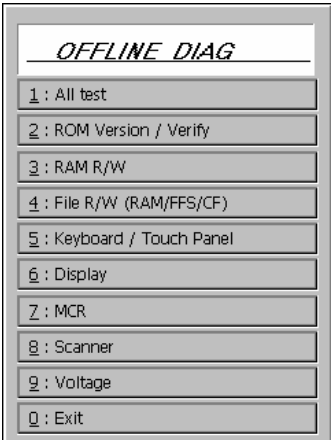
Start the setup menu to display the following.

For the procedure for starting the setup menu, see Chapter 9, "Setup Menu and Utility Operations



After the setup menu is displayed, double tapping the lower left or right corner of the iPAD screen with the stylus, a menu item is added.

Tapping [9. Diag], which is now displayed, starts DIAG for the iPAD and displays the following menu dialog box.



Tap [1] to [9] to start a DIAG item.

Tapping [0] ends DIAG and returns to the setup menu.



- DIAG is a test program for verifying operation of the iPAD.
- The DIAG screen and the procedure may be changed without prior notice.

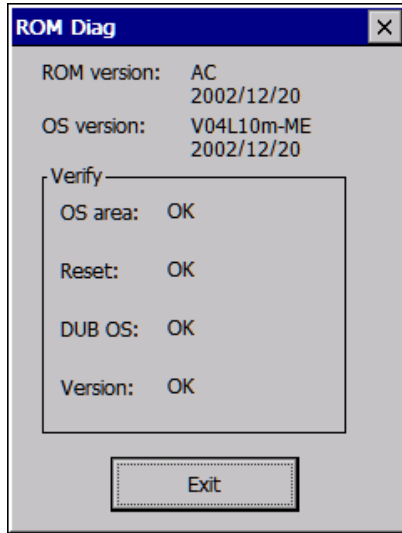
25.2 ALL test

Tapping [1. ALL test] on the DIAG menu enables all items to be tested.

To end the test, double-tap the screen, tap the [Exit] button, or press the [CLR] key.

25.3 Version

Tapping [2. ROM Version/Verify] on the DIAG menu displays the ROM version number.



(1) ROM Version

Displays the current ROM version information for the iPAD.

(2) OS Version

Displays the current OS version information for the iPAD.

(3) Verify

Verifies ROM. When ROM is normal, "OK" is displayed. If the ROM is abnormal, the total value and checksum value are displayed.

Tapping the [x] button returns to the DIAG menu.

25.4 RAM R/W

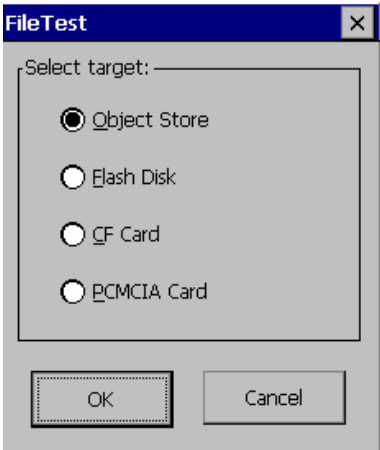
Tapping [3. RAM R/W] on the DIAG menu checks RAM reading and writing.



Tapping the [x] button returns to the DIAG menu.

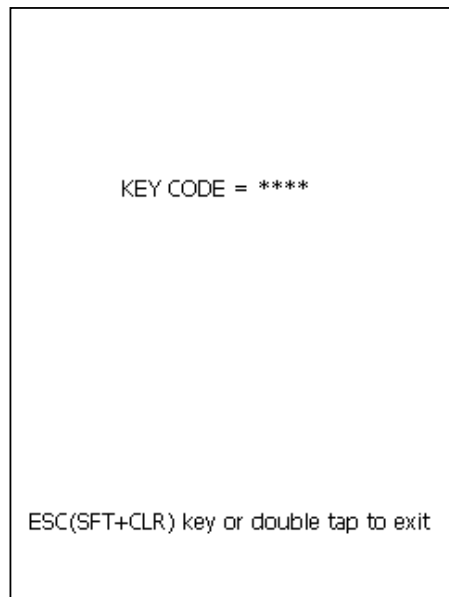
25.5 File R/W (RAM/FFS/CF)

Tapping [4. File R/W (RAM/FFS/CF)] on the DIAG menu checks file reading and writing.



25.6 Keyboard/Touch Panel

Tapping [5. Keyboard/Touch Panel] on the DIAG menu starts the keyboard and touch panel diagnostics.



Pressing any key on the iPAD generates a tap sound and displays the number of the pressed key.

Tapping the screen gently with a thin object at the end displays "●" at the tapped location.

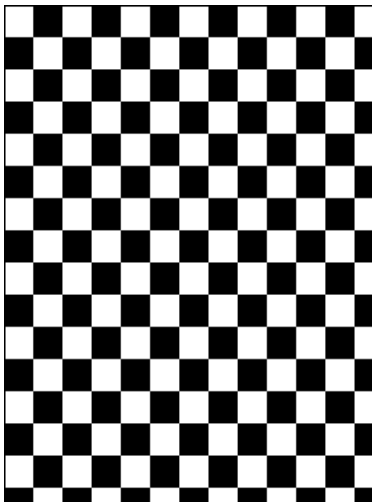
Double-clicking the screen ends this test and returns to the DIAG menu.

▲ CAUTION

- Before using the touch panel, be sure to correct it.
If the touch panel is not corrected, the tapped location and the display location may be the same or may not be displayed.
- Use a round object at the end when tapping the touch panel.
If a sharp object is used at the end, the screen is damaged or a device failure occurs.

25.7 Display

Tapping [6. Display] on the DIAG menu displays a checkerboard or character pattern on the screen used for testing with the normal and highlight (reverse video) modes.



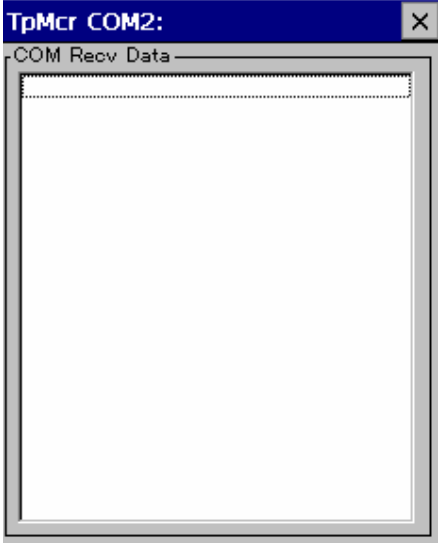
ABCDABCDABCDABCDABCDABCD
ABCDABCDABCDABCDABCDABCD
ABCDABCDABCDABCDABCDABCD
ABCDABCDABCDABCDABCDABCD
ABCDABCDABCDABCDABCDABCD
ABCDABCDABCDABCDABCDABCD
ABCDABCDABCDABCDABCDABCD
ABCDABCDABCDABCDABCDABCD
ABCDABCDABCDABCDABCDABCD
ABCDABCDABCDABCDABCDABCD
ABCDABCDABCDABCDABCDABCD
ABCDABCDABCDABCDABCDABCD
ABCDABCDABCDABCDABCDABCD
ABCDABCDABCDABCDABCDABCD
ABCDABCDABCDABCDABCDABCD

Double-tapping the screen ends this test and returns to the DIAG menu.

25.8 MCR

Tapping [7. MCR] on the DIAG menu starts diagnostics of the MCR section.

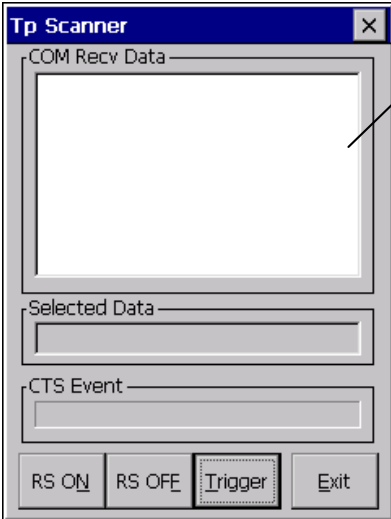
When a card is passed through the MCR with the dialog box displayed, "OK" ("NG" if a read error occurs) appears.



Tapping the [x] button returns to the DIAG menu.

25.9 Scanner

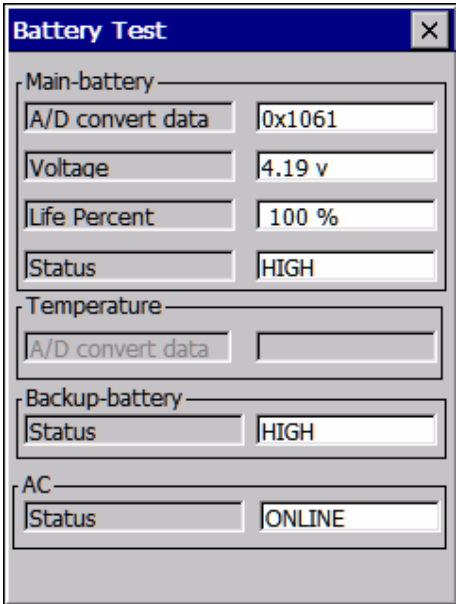
Tapping [8. Scanner] on the DIAG menu starts diagnostics of the scanner. The following read mode selection dialog box appears.



Bar code data is displayed.

25.10 Voltage

Tapping the [9. Voltage] key on the DIAG menu starts diagnostics of the battery (battery voltage). Confirm the voltage status of the main and backup batteries of the current device.



* The iPAD does not display the temperature.

Tapping the [x] button returns to the DIAG menu.

26 Notes on Use

26.1 Handling the storage card

(1) Mounting the storage card

- (1) Do not pull the antenna cable of the SS-RF LAN card with force when using the CF card.
- (2) Do not damage the antenna cable of the SS-RF LAN card.
- (3) Attach the extraction tab to the CF card before inserting the CF card.

If the card is inserted without attaching the extraction tab, it may not be possible to remove the card.

(2) Using the storage card

(1) Reset operation

Do not press the reset switch during writing to a file on the storage card.

(2) Power-off operation

Do not turn off the power with the power key during access to a file on the CF card or flash disk.

Using a program, check for errors after file access as a protection against loss of power caused by a dead battery during file access. If an error occurs, retry.

26.2 TP explorer

TP Explorer is a file manipulation program specific to the iPAD.

A backup file (in Section 3.2, "Backing up Applications") can be deleted or moved using TP Explorer. If a backup file is deleted or moved, the application program will not be restored normally on automatic restore processing performed for a memory failure resulting from, for example, a dead battery, causing it to no longer operate.

26.3 Network shared file

Note the following when accessing a network shared file with the standard Explorer:

- (1) Change "Device Name" using "Communication" in the iPAD Control Panel.
(The default "Device Name" is "WinCE.")
- (2) Clear "Change Password" check box at the next logon for setting of the domain manager of the server management tool program.
- (3) Using the screen keyboard, enter the server name (\\server name) in the "Address" field of the Windows CE Explorer.

Also, the \Windows\net.exe command can be used to assign the shared folder to the \network folder. For more information, see Help for the net command.

26.4 Memory failure

The iPAD has a function that automatically restores a backed up application program when a memory failure (RAM initialization due to a dead battery, etc.) occurs.

(1) Memory failure warning message

If the object store has been initialized because of a dead battery, the following warning message appears when the system is started:

Message: "A power failure may have occurred."

(2) How to acknowledge the memory failure warning message

Once the memory loss message is acknowledged, automatic recovery is executed.

- Press the [CAN] key while holding down the [SFT] key.

(1) Automatic recovery function

Automatic restoration restores applications in the following steps:

- (1) Touch screen calibration
- (2) Date and time correction using the date and time properties
- (3) Restoration of a backup file from the flash disk
- (4) Restoration of the registry
- (5) Restart

26.5 Magnetic card reader (MCR)

When a cellular phone or similar object is brought close to the MCR of the iPAD, invalid scan data may be returned. As preparation for such an error occurring, be sure to perform error handling and recovery processing for a read failure.

26.6 Screen burn-in

If the iPAD is left for two hours or more with the same screen displayed, screen burn-in may occur. To prevent screen burn-in, switch the display.

(For example, use a PC screen saver, or a solid black or solid white screen display)

26.7 Switching of wireless method

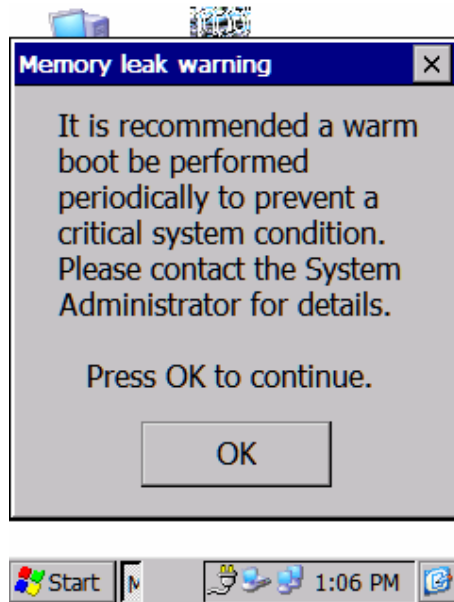
The iPAD cannot use SS-RF LAN (802. 11b) and Bluetooth at the same time.

To change the communication method, switch the wireless method from the setup menu.

27 Appendix

A Important Messages

If the unit experiences a total exceeding 200 suspend resume sessions, the iPAD will display the following message alerting of a possible memory leak condition. The only response that the user can take at this point is to respond to this message by pressing the “OK” button.



Note: It is strongly recommended that the user immediately contact their system administrator in order to obtain necessary instructions.

B Error Codes

If an error occurs in the iPAD, one of the following error codes is displayed.

Error code	Name	Error
0 or above		Standard Windows error code. See WinError.h.
0	RETURN_OK	Normal or successful
-101	FILE_NOTHING	The specified file was not found.
-102	FILE_ALWAYS	The specified file already exists.
-103	FILE_READ_ERROR	File read error
-104	FILE_WRITE_ERROR	File write error
-105	FILE_COPY_ERROR	File copy error
-106	REGFILE_COPY_ERROR	WIN32API:RegCopyFile error
-107	REGFILE_RESTORE_ERROR	WIN32API:RegRestoreFile error
-108	FILE_DELETE_ERROR	File deletion error
-109	DIR_CREATE_ERROR	Folder creation error
-110	FILE_RUN_ERROR	File execution error
-111	REG_OPEN_ERROR	Registry key open error
-112	REG_READ_ERROR	Registry value read error
-113	REG_WRITE_ERROR	Registry value write error
-114	REG_CREAT_ERROR	Registry creation error
-115	REG_DELETE_ERROR	Registry deletion error
-116	NOT_IMPORT_REGFILE	Registry file import error
-117	NOT_EXPORT_REGFILE	Registry file export error
-121	NOT_FIND_SECTION	The section name was not found.
-122	NOT_FIND_ENTRY	The entry name was not found.
-123	NOT_FIND_HKEY	HKEY was not found in the file.
-124	NOT_FIND_SUBKEY	The registry subkey was not found in the file.
-125	VALUE_STATUS_ERROR	The registry format that was read is invalid.
-126	VALUE_NAME_ERROR	The registry name that was read is invalid.
-127	VALUE_DATA_ERROR	The registry information that was read is invalid.
-131	NOT_FIND_CONFIG	The setting file was not found.
-132	NOT_FIND_SYSTEMREG	The system registry file was not found.
-133	NOT_CREATE_STARTUP	Startup shortcut cannot be created.
-134	NOT_BACKUP_FILE	The file cannot be backed up.
-141	NOT_APP_INSTALL	No applications are installed.
-999	SYSTEM_ERROR	System error