

Technical Bulletin

ISS45 92R/M/U Keyboard Use on TeamPoS S-Class

ISS45-TECH-05:21

April 25, 2005

With the current 7.0.9.1 V7 ISS45 release, the keyboard port may be set via parameters. In V8, however, this feature is not available until 8.10.1 – a specific port is determined for the keyboard.

This means that when you are loading V8 onto a machine that does not have the same physical port setup as a TeamPoS 2000 A or M, you will need to manage the port setup from within Windows to enable connection of a keyboard since ISS45 will be looking for a specific port number.

The following pages provide step-by-step information on doing this with the current S-Class and software/operating system platforms.

To Your Success,

Larry

Larry Lark

Senior ISS45 Specialist

This document and information are supplied to StoreNext Retail Technologies personnel and third parties to assist them in doing business with StoreNext. They are not to be used or distributed for any other purpose.

StoreNext Retail Technologies LLC endeavors to ensure that the information in this document is correct and fairly stated, but does not accept liability for any error or omission.

A Temporary Solution for Using a 92R, 92M or 92U RS232 Connected Keyboard on the TeamPos 2000 S Running ISS45 version 8

Note: During the initial loading of ISS45 on the TeamPos 2000 S, you must choose the **Hardware Type Other** (Figure 1). The TeamPos 2000 S is not classified as a TeamPos as is the TeamPos 2000.



Figure 1

The following outlines the steps needed to change COM port 4 to COM port 7 for ISS45 to recognize the 92R, 92M or 92U keyboard.

1. Click on Start from the desktop (Figure 2).

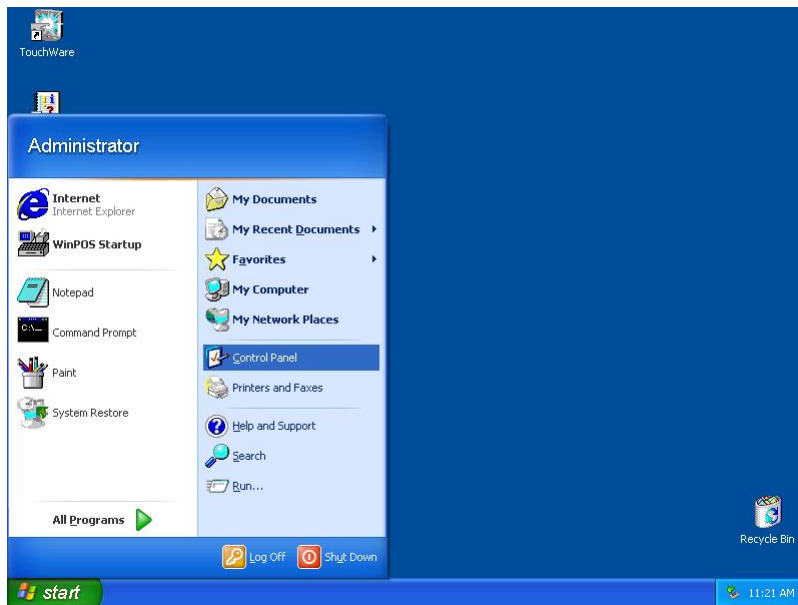


Figure 2

2. Click on Control Panel and the following screen opens (Figure 3).

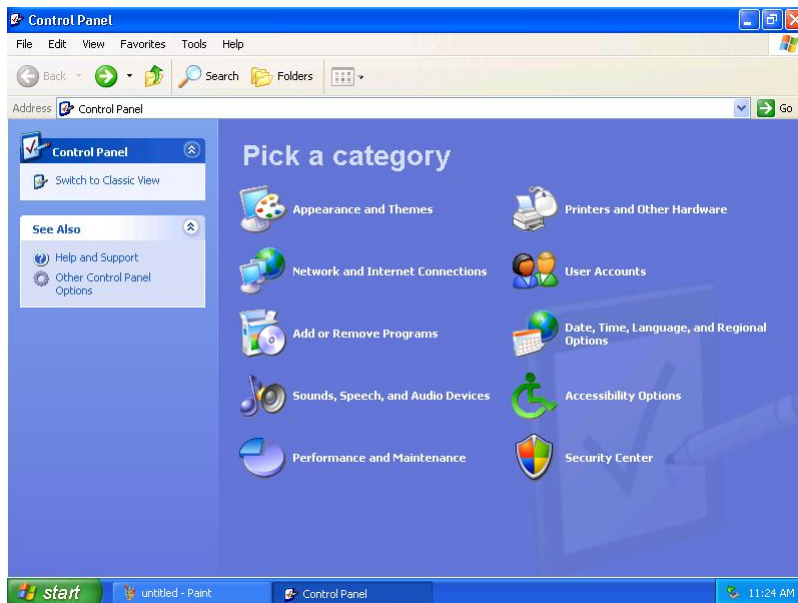


Figure 3

3. Click on Performance and Maintenance and the following screen opens (**Figure 4**).

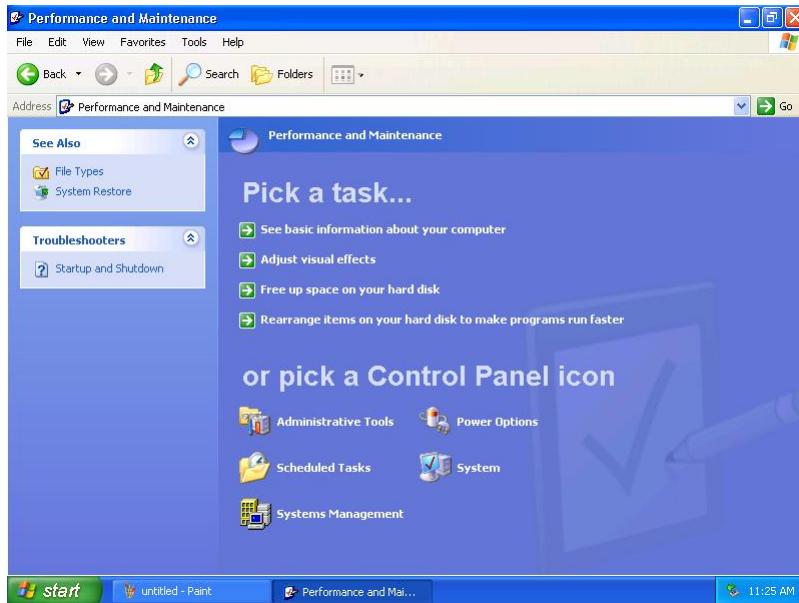


Figure 4

4. Click on System and then the Hardware Tab and the following screen opens (**Figure 5**).

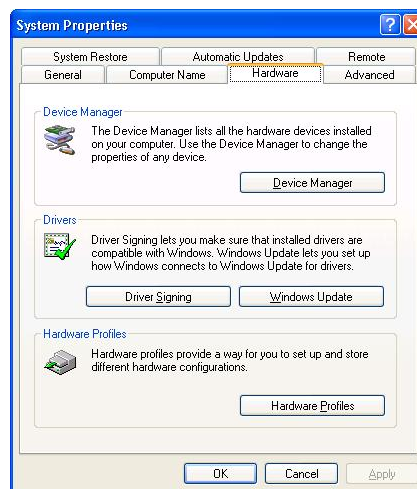


Figure 5

5. Click on Device Manager and then click on the + to open up the Ports (COM & LPT) devices (**Figure 6**).

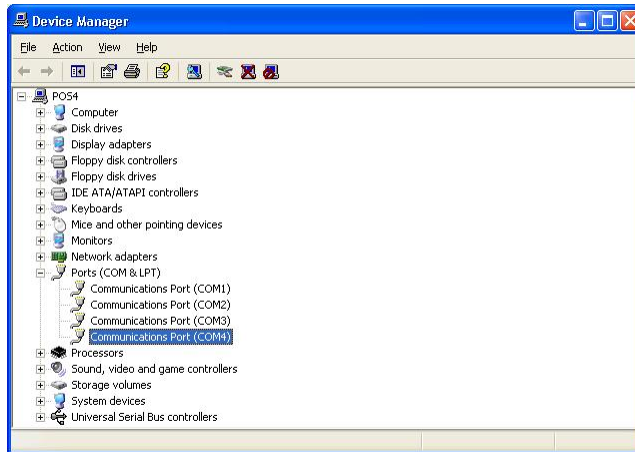


Figure 6

6. Double click on Communications Port (COM4) and then click the Port Settings tab and the following screen opens (**Figure 7**).

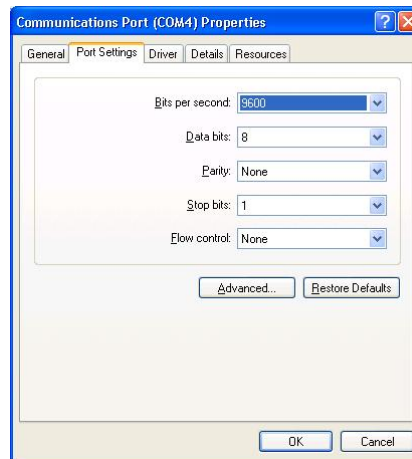


Figure 7

7. Click on Advanced and then use the COM Port Number: dropdown and select COM7 as the following screen shows (**Figure 8**).

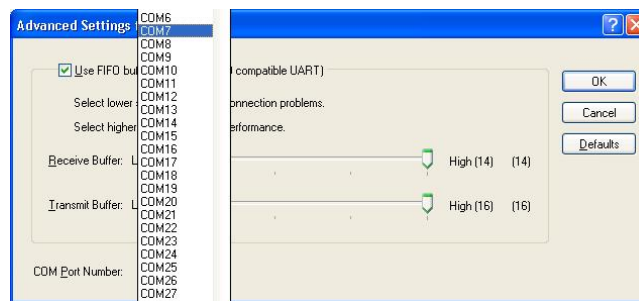


Figure 8

8. Selecting COM7 from the dropdown will take you back to the previous screen (Figure 9).

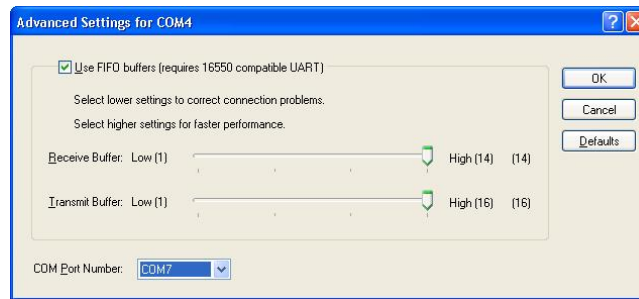


Figure 9

9. Selecting OK will take you back to the previous screen (Figure 10).

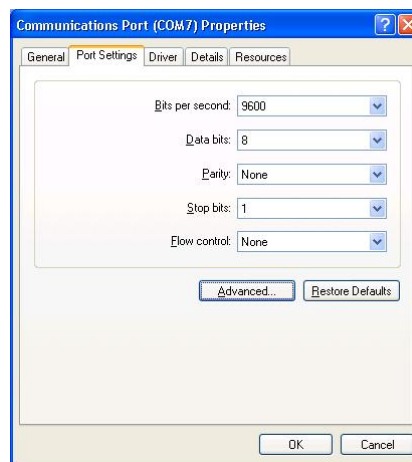


Figure 10

10. Selecting OK will take you back to the previous screen which will still show the COM Port as 4 (Figure 11).

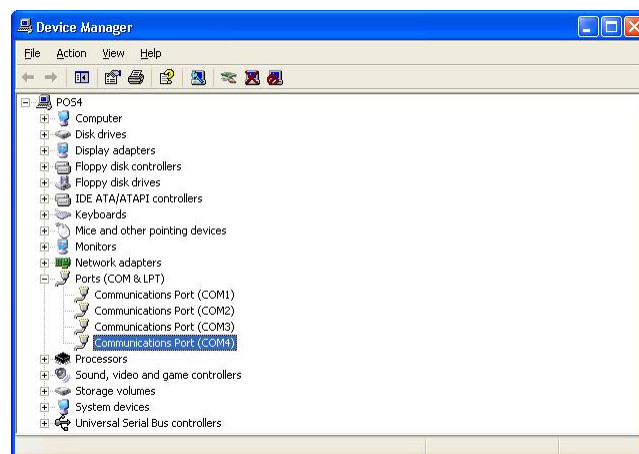


Figure 11

11. Select File then Exit which will return you back to the System Properties screen (Figure 5) above. Now clicking Device Manager and the + to open the Ports (COM & LPT) will show Communications Port (COM7) (Figure 12).

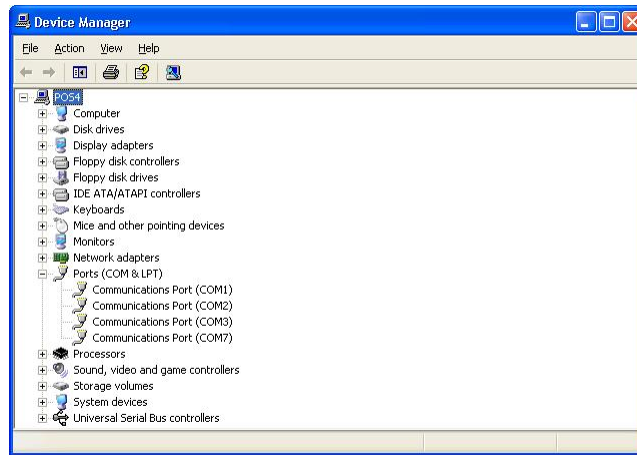


Figure 12

12. At this point, the 92R, 92M or 92U connected to the RS232 port will function with ISS45 as it would normally.