

Technical Bulletin

TeamPoS 2000 S-Class Second Video Installation

ISS45-TECH-06:09 Issue 2

April 22, 2006

The following pages outline the method for installing the Jaton Video-118PCI-32DDR video card into the TeamPoS 2000 S-Class for use with a second monitor.

The Jaton Video-118PCI-32DDR is not the only video card likely to work with the TeamPoS 2000S, but it is from a reputable manufacturer and available at a reasonable price. This card has been recommended by some ISS45 dealers also. This board is now certified for use. StoreNext support will make best efforts to resolve any video issues that may arise with this card, but will not source, test or provide support on cards that do not have this kind of certification.

This installation routine applies *only* to this specific card. It is not generic.

We have found that video cards typically take 32MB of the existing system RAM, even if they have substantial on-board video memory. This will often not leave the TeamPoS terminal with sufficient resources to reliably run ISS45 with the typical graphics and AVI files usually associated with dual video. It is therefore important that you order 90000159K - an additional 128MB of RAM - for each TeamPoS 2000 S where you plan to use dual video.

- This part fits into the second RAM slot and matches the 128MB memory module that is supplied with the S-Class.
- The price of this part has been reduced to provide this part at reasonable cost.
- You may be able to get the terminal up and running without the extra RAM, but unpredictable errors are more likely to occur after live installation. Or, the software could be right on the edge of RAM use, and a later updated version of the POS software, features chosen (e.g. new promotions) or changes in use (such as adding AVI files to the shopper display) would cause these random failures.
- It is strongly recommended that you *not* source 128MB modules locally. Regardless of quality, there are many minor differences between memory modules (even if they have identical specifications and are perfectly "standard") that can keep them from working smoothly together or with the TeamPoS terminal. The resulting problems would take the form of lockups and random errors that cannot reliably be replicated. StoreNext will not support these configurations.

Do not expect the same video and scanning performance with this S-Class configuration as is available with the much faster TeamPoS 2000 M class terminals.

To Your Success,

Larry

Larry Lark
Technical Specialist

This document and information are supplied to StoreNext Retail Technologies personnel and third parties to assist them in doing business with StoreNext. They are not to be used or distributed for any other purpose.

StoreNext Retail Technologies LLC endeavors to ensure that the information in this document is correct and fairly stated, but does not accept liability for any error or omission.

TeamPoS 2000 S Second Video Card Installation
Jaton Video-118PCI-32DDR

0.1. Second Video Card Installation

NOTE: The video card documented in this section is the Jaton Video-118PCI-32DDR containing only one VGA connection. The card uses the Nvidia geforce2 MX-400 accelerator. UPC# 64240491188

The below information may change as board manufacturers change revisions of their products.

0.1.1. Jaton Video-118PCI-32DDR Installation

NOTE: Do not use the Quick Start Guide that ships with the Video-118PCI card. XP Embedded does not have some of the expected drivers.

The following procedures assume that you already have a working XP Embedded load running on the TeamPoS 2000 S-Class.

0.1.1.1. Temporarily disable the onboard video adapter in the Device Manager screen using the following steps

0.1.1.1.1. Go to the Windows device manager screen

0.1.1.1.2. Click on the + next to the Display adapters to open it up

0.1.1.1.3. Highlight the Intel® 82810E Graphics Controller and disable it

0.1.1.1.4. Accept the warning that pops up but click [No] to the restart message that pops up next

0.1.1.2. Do a normal Windows shutdown and unplug the power cable on the TeamPoS 2000 S-Class

0.1.1.3. Install the Jaton PCI video card into the PCI slot closest to the motherboard

0.1.1.4. Plug your second VGA monitor on the VGA connector on the video PCI card

0.1.1.5. Turn on the computer and enter the CMOS by hitting the [Delete] key on the keyboard

0.1.1.6. CMOS Setting to check

0.1.1.6.1. Integrated Peripherals screen

- Init Display First [PCI Slot]

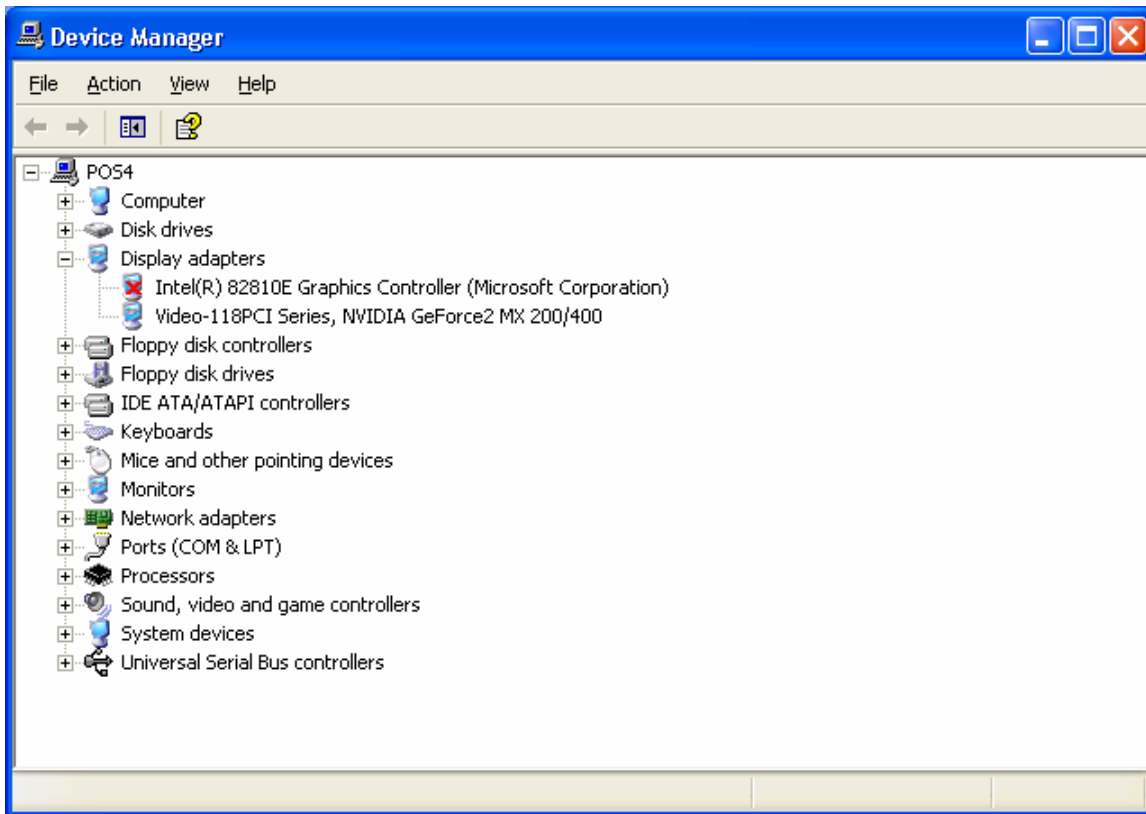
0.1.1.6.2. Save & Exit Setup

NOTE: You will see the diagnostics on the VGA monitor connected to the PCI card and windows will only come up on the PCI connected monitor at this point

0.1.1.7. Windows will detect the new hardware and the Found New Hardware Wizard screen will be showing

0.1.1.8. Click on [Cancel] at this point since you will be installing the new Jaton Video PCI drivers from the packaged CD

- 0.1.1.9. You will get the message that a problem occurred during install but that is correct at this point
- 0.1.1.10. Insert the CD packaged with the Jaton video card into another machine containing a CD-ROM drive and share the NVIDIA | win2K&XP folder
- 0.1.1.11. Map the folder on the TeamPoS 2000 S-Class to run the setup.exe installation
- 0.1.1.12. Click on Setup.exe in the mapped folder to start the installation
- 0.1.1.13. A popup may show that the publisher could not be verified. Click on [Run] to continue the installation
- 0.1.1.14. The NVIDIA Windows 2000/XP Display Drivers window for NVIDIA shows. Click [Next] to continue
- 0.1.1.15. The installing driver components screen shows and may stay at 9% for over 1 to 2 minutes but just let the install finish
- 0.1.1.16. At the Install Shield Wizard Complete screen click the bullet Yes, I want to restart my computer and then click [Finish]
NOTE: You will see the diagnostics on the VGA monitor connected to the PCI card and windows will only come up on the PCI connected monitor at this point
- 0.1.1.17. Enable the onboard Video adapter in the Device Manager screen using the following steps
 - 0.1.1.17.1. Go to the Windows device manager screen
 - 0.1.1.17.2. Click on the + next to the Display adapters to open it up
 - 0.1.1.17.3. Highlight the Intel® 82810E Graphics Controller and enable it



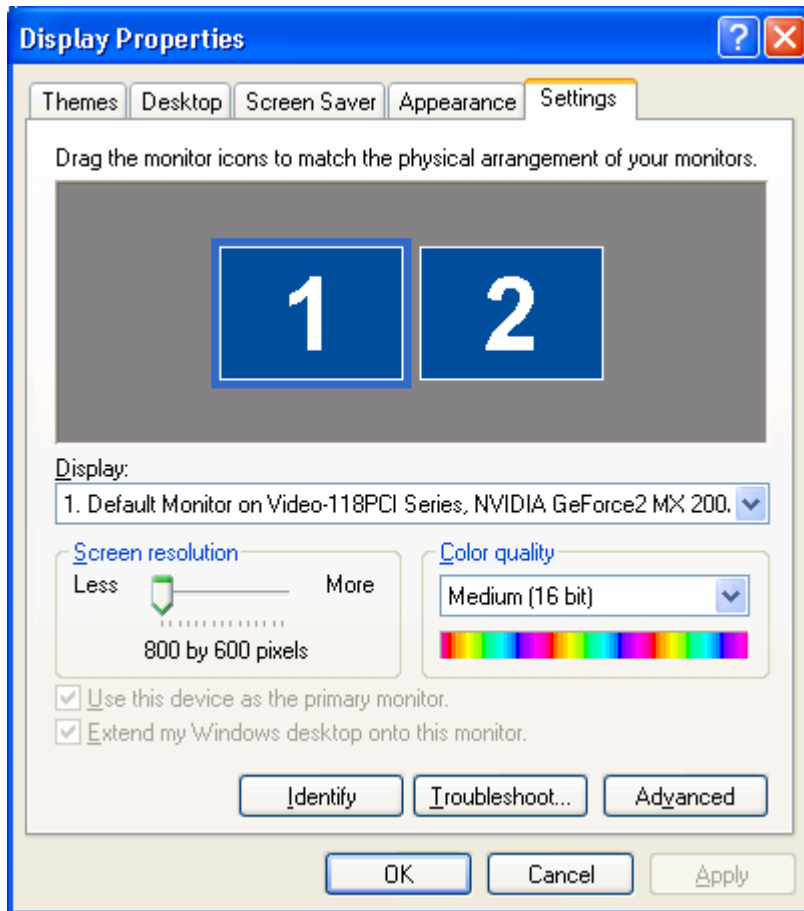
0.1.1.17.4. Close the device manager screen

0.1.1.18. Restart your computer at this point so that it loads the dual display adapters correctly

0.1.1.19. After restarting the computer, you may get the Welcome to NVIDIA nView Wizard at this point but just click [Cancel]. This is not going to be installed on the TeamPoS 2000 S-Class

0.1.1.20. Right click on the desktop and select Properties

0.1.1.21. Select the Settings Tab and the following screen is displayed



0.1.1.22. Click on Monitor 2 (VGA on the motherboard)

0.1.1.22.1. Set it to 800 by 600 pixels and Medium (16 bit)

0.1.1.23. Click on Monitor 1 (VGA on the PCI card)

0.1.1.23.1. Set it to 800 by 600 pixels and Medium (16 bit)

0.1.1.24. Installation and setup is complete at this point