

Technical Bulletin

ScanMaster SoftThought Interface

SM-TECH-09:12
August 3, 2009

The following pages provide documentation regarding the SoftThought interface for ScanMaster 2.06.xx.

This is Revision E of document number 3033-02222002-001.

This document and information are supplied to StoreNext Retail Technologies personnel and third parties to assist them in doing business with StoreNext. They are not to be used or distributed for any other purpose.

StoreNext Retail Technologies LLC endeavors to ensure that the information in this document is correct and fairly stated, but does not accept liability for any error or omission.

TABLE OF CONTENTS

<u>OVERVIEW</u>	1
<u>FUNCTIONAL REQUIREMENTS</u>	1
<u>Functional Detail</u>	1
<u>NON-FUNCTIONAL REQUIREMENTS</u>	5
<u>Non-Functional Detail</u>	5
<u>IMPLEMENTATION SPECIFICATION</u>	6
<u>Pre-Requisites</u>	6
<u>Example Screen Views</u>	6
<u>REVISION HISTORY</u>	7

Overview

SoftThought is a labor scheduling software that utilizes sales data from the Point of Sale (PoS) system to help management determine how best to schedule the work force. It helps to predict when extra staff will be needed, and not needed.

Functional Requirements

Functional Detail

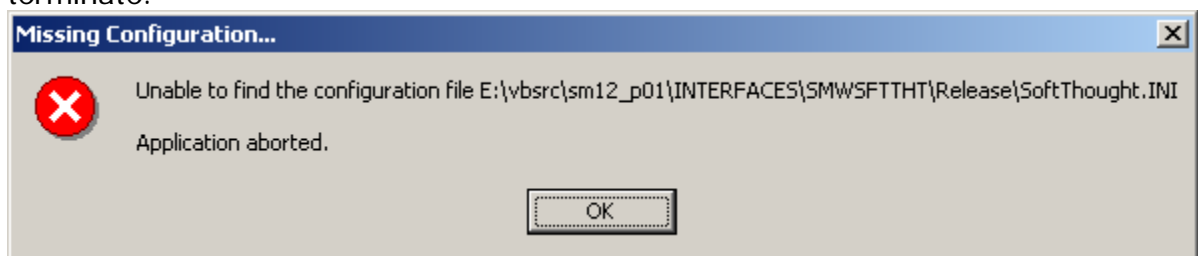
Scope of Work

Create a single application named SM2SFTHT.EXE that can run unattended as part of ScanMaster's end of day process, or manually with optional alternative configurations allow the interface to produce targeted information.

Function Requirements

Application will read the ScanMaster's Electronic Journal (EJ) database. The application will extract from the EJ, sales information based on the requirements document provided by Mike Schaden of North Country Business Products, and output a comma delimited data file also based on the same document. The latest revision of this document was provided January 8th, 2002

The interface when executed without any command line options and will use the file SoftThought.INI found in the same directory as the application to configure the output data, and the default consolidated data from the previous business date (i.e. two days ago). If there is no data for the selected date, or the configuration file is not available and no other configuration file or date is specified, the application will display a message box, log the error, and will terminate.



All actions done, and errors reported by the interface are logged in the file SM2SFTHT.LOG, which will be located in the same directory as the application.

Data Requirements

The application accepts two command line arguments. They can be listed in any order, but must be separated from the application name and by the other argument by at least one space.

- Alternative Configuration file.

If this command line argument is not included, the application uses the default configuration file of **SoftThought.INI**, found in the same directory as the application. If an alternative file name is provided, that file will be used instead. If no path is provided with the application, it will use the system's default path.

Examples of usage:

```
SM2SFTHT.EXE TEST.INI
SM2SFTHT.EXE C:\TEST.INI
```

- Process (or reprocess) a specific date.

This command line argument allows a date to be sent to the application so it will read specific date of transactions from the EJ database, and creates an output file with that date. The argument must be in the specific format of: /Rmm-dd-yyyy.

/R – This prefix can be either lowercase or uppercase, but it must proceed the date. No space between the /R and the date.

mm-dd-yyyy – The date must be in the full 10 character format, where “mm” is the month with a leading zero for January through September, “dd” is the date with a leading zero for dates less than 10, and “yyyy” which is the full four digit year.

Examples of usage:

```
SM2SFTHT.EXE /R07-02-2002
SM2SFTHT.EXE /r12-31-2001
```

Examples of using both command line arguments together order and capitalization are not important:

```
SM2SFTHT.EXE /R07-02-2002 C:\TEST.INI
SM2SFTHT.EXE TEST.INI /r12-13-2001
```

The output file will contain comma-delimited records. Each record represents a 15-minute interval of time. Each record is broken down into terminal groups, and each group has it's own set of sales information.

This is the detailed file specification of each record:

Field Number	Field Name	Data Type	Description
1	Date	Char(8)	MMDDYYYY
2	Time	Char(5)	HH:MM (MM 15 minute intervals)
3	Identifier	Char(2)	01 – Express group, this group must always be defined as

			express. 02-98 – Terminal groups can be configured as needed. 99 – “Catch All” group, this group will contain data for terminals that are not defined. This group doesn’t need to be configured.
4	Items	Char(4)	Item count for all normal items. This count will not include quantity key counts as entered at the POS and linked items.
5	Customer	Char(4)	Customer counts
6	Sales	Signed(11)	Net sales total
7	Items scanned	Char(4)	Scanned item count. Scanned will include the quantity entered at POS
8	Items keyed	Char(4)	Keyed item count
9	Items waned	Char(4)	Waned item count.
10	Items Department	Char(4)	Department entered item count
11	Weighed Items	Char(4)	Weighed item count
12	Void Items	Char(4)	Void item count. These items are not counted in the item bucket. Items in cancel transactions are not counted in the void item bucket.
13	Refunds + Returns	Char(4)	Refund & Return count
14	Discounts	Char(4)	Discount count
15	Deposits	Char(4)	Deposit count
16	Deposit Returns	Char(4)	Deposit return count
17	Coupons	Char(4)	Store & manufacture coupon count
18	Tenders [1]	Char(4)	Tender 1 count
19	Tenders [2]	Char(4)	Tender 2 count
20	Tenders [3]	Char(4)	Tender 3 count
21	Tenders [4]	Char(4)	Tender 4 count
22	Tenders [5]	Char(4)	Tender 5 count
23	Tenders [6]	Char(4)	Tender 6 count
24	Tenders [7]	Char(4)	Tender 7 count
25	Tenders [8]	Char(4)	Tender 8 count
26	Tenders [9]	Char(4)	Tender 9 count
27	Tenders [10]	Char(4)	Tender 10 count
28	Tenders [11]	Char(4)	Tender 11 count
29	Tenders [12]	Char(4)	Tender 12 count
30	Tenders [13]	Char(4)	Tender 13 count
31	Tenders [14]	Char(4)	Tender 14 count
32	Tenders [15]	Char(4)	Tender 15 count
33	CM Card	Char(4)	Consumer Marketing card transaction count

Modules Affected

To implement this interface as part of the ScanMaster EOD process, it will be necessary to install the interface application to the default directory (\GROCERY) of the machine that runs the ScanMaster EOD. It will also be necessary to modify the configuration file SM2EOD.SCR located in the ScanMaster server’s shared \GROCERY directory, by adding the name of the application “SM2SFTHT” to the file.

NOTE: The default configuration file SoftThought.INI will be used during the EOD process.

The interface uses two configuration files:

- **SoftThought.INI** This is the default configuration file and is provided by SoftThought. It contains information about the grouping of the lanes, tenders, which departments are to be excluded, and where the output file will be placed, and named.

This file can be overridden by an alternative configuration file by adding the full path of the alternative configuration file to the command line: ie.

```
"SMWSFTTHT C:\SoftThought\AltConfig1.INI"
```

- **SM2SFTHT.INI** This configuration file holds the necessary configuration options to allow the interface to interact with ScanMaster. The options are under the [ScanMaster] group within the file. If this file does not exist, the defaults are assumed.
 - **LanDrive**
This option holds the drive letter of the mapped drive of the ScanMaster server share. The default is "F".
 - **DefDrive**
This option holds the drive letter of the default drive of the current machine, where ScanMaster executables are installed. The default is "C"
 - **RootDir**
This option holds the directory name of the root directory of the ScanMaster files. This is used to build the path to the ScanMaster files on the ScanMaster server. The default is "\GROCERY"
 - **AddDoubleMfgCoupons**
This option controls how Double Manufacturer's coupons affect net sales. If this option is set to "0" the interface will net (reduce) the coupon amount from sales. This setting matches the ScanMaster setting "Add Dbl Vendor Coupon to sales". Default is "0"

- AddDoubleStoreCoupons
This option controls how Double Store coupons affect net sales. If this option is set to "0" the interface will net (reduce) the coupon amount from sales. This setting matches the ScanMaster setting "Add Dbl Store Coup to sales".
Default is "0"
- AddStoreCoupons
This option controls how face value of Store coupons affect net sales. If this option is set to "0" the interface will net (reduce) the coupon amount from sales. This setting matches the ScanMaster setting "Add Store Coupon to sales".
Default is "0"
- UseItemCounts
This option controls the value placed into field 4 ("Items") of the output file. If this option is set to "0" the field will be populated with ScanMaster's Ring Count. This value can be found on the Store Totals report. If this option is set to "1" the field will be populated with ScanMaster's Item Count. This value can be found on the Store Totals Report, as well as the Hourly Activity Report, and Department Activity Report.
Default is "0"

Non-Functional Requirements

Non-Functional Detail

Look and Feel Requirements

The application will look like other ScanMaster EOD applications. It will be full screen and have a progress meter to show processing is taking place, and to give the user an idea of how long the process may take.

Usability Requirements

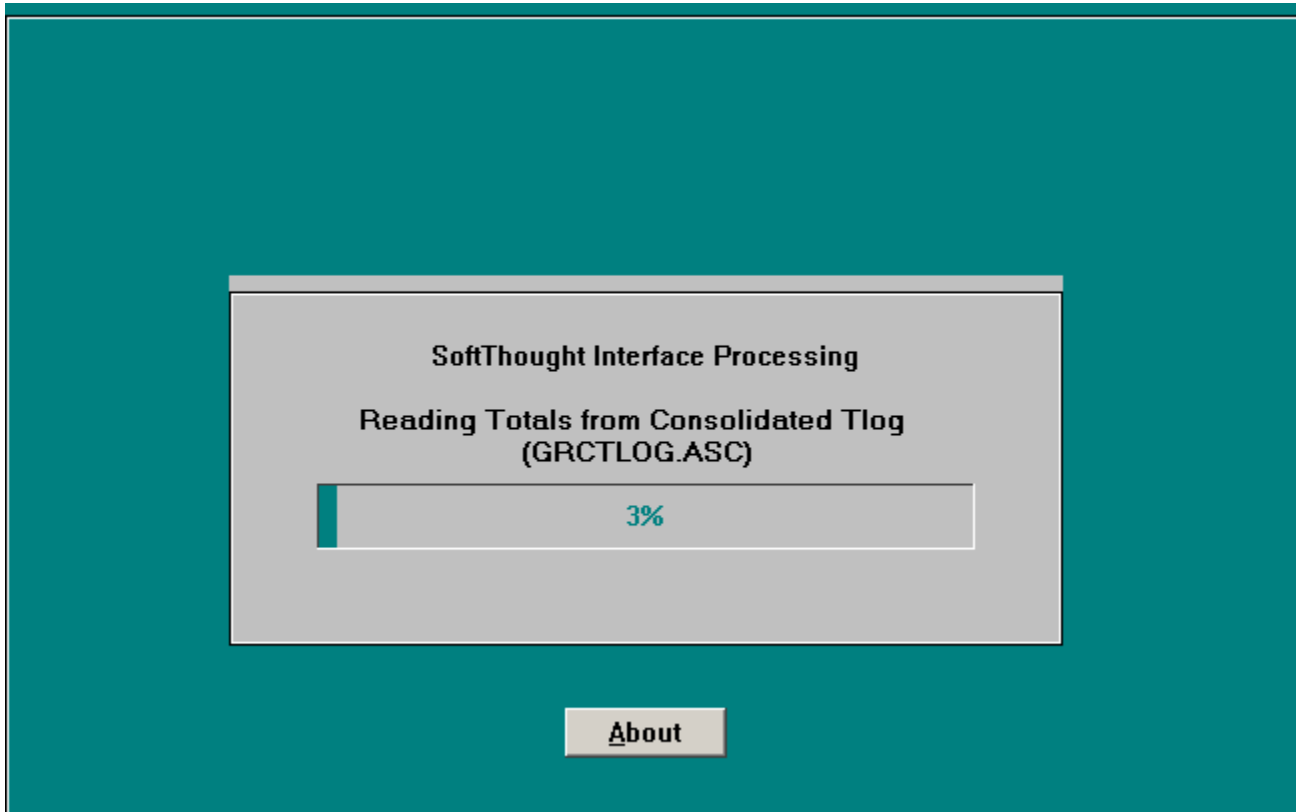
It is not required that the interface be installed on a system with ScanMaster installed, however it is necessary that the system have read access to the ScanMaster server directories, and files.

Implementation Specification

Pre-Requisites

It is necessary to have access to the ScanMaster server's directory with at least "Read" access. This access must be in the form of a mapped drive letter on the application machine to the server's share.

Example Screen Views



Revision History

Revision	Date	By	Description
(initial)	2/22/2002	Lou Laughlin	Initial Creation
A	7/2/2002	Lou Laughlin	Added "Date Recovery" to interface.
B	10/27/2004	Lou Laughlin	Added new "UseItemCount" option to the configuration file SMWSFTTHT.INI. Also added the detailed record structure.
C	5/20/2005	Lou Laughlin	Converted app to use Pervasive SQL EJ Database
D	5/20/2005	Lou Laughlin	Removed all references to NCR.
E	7/20/2009	David Ambrose	Recompiled with updated shared modules to fix a Database connection error.