

Technical Bulletin

ISS45 YOU Technology and Catalina Interface — Concurrent Operation

ISS45-TECH-12:02
February 22, 2012

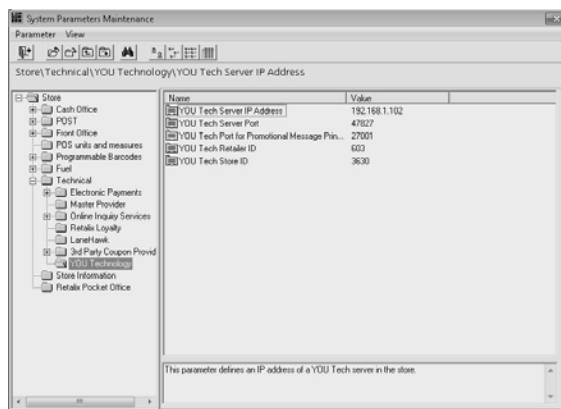
REQUIREMENTS

To run the YOU Technology and Catalina interfaces concurrently, you need:

- 1) Minimum version of 8.1.6.0-050 is required for this feature. All versions prior to this won't let YouTech & Catalina run concurrently.
- 2) You MUST be at 827.3 (Connected Payments) on MTX_POS.DLL or the POS won't load.
- 3) Make sure your software key has the YOU Technology interface

SETUP

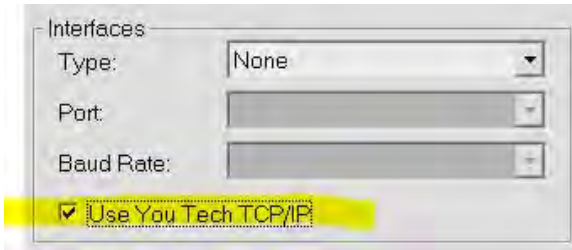
1. To set up the communications, go into General System Parameters



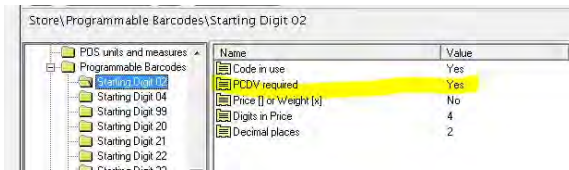
You Tech Server IP Address	=	JBrain's IP Address
You Tech Server Server Port	=	Port assigned by YT for Promotions
You Tech Port for Promo Message Print	=	Port assigned by YT for Receipt Printing
You Tech Retailer ID	=	Assigned by YT per Chain
You Tech Store ID	=	Assigned by YT per Store

Continued on following pages...

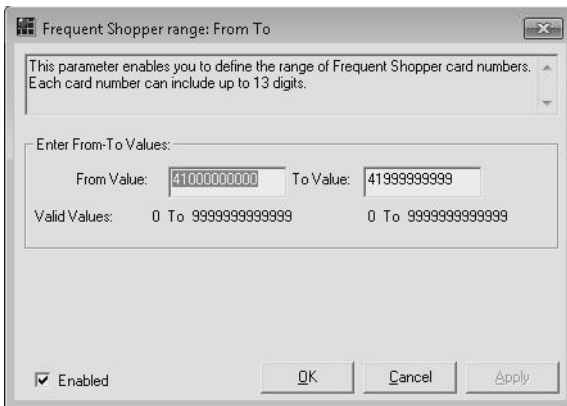
- Turn on YOU Technology interface per lane in POST Configuration



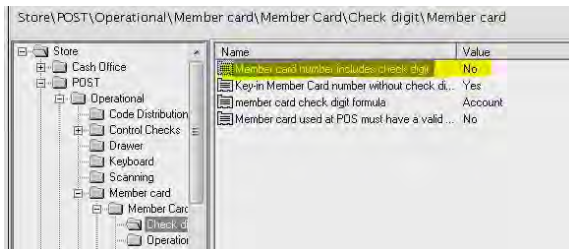
- YOU Technology uses UPC codes for their promotions. They are formatted w/ PCDV so it MUST be on in ISS45.



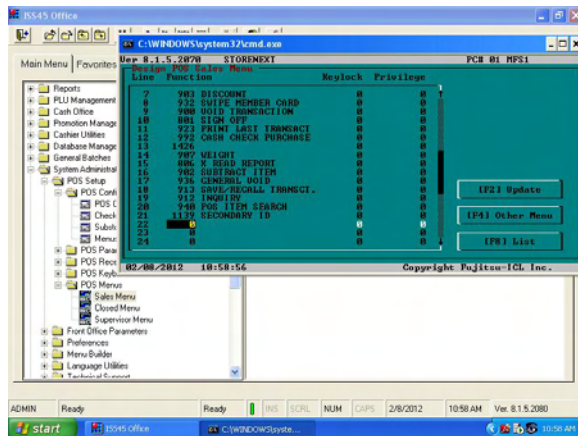
- Frequent Shopper Range should be wide open.



- Set Check Digit to 'No,' otherwise the cards won't be read correctly by YOU Technology



6) You need to link the secondary ID function to the sales menu



7) Then you need to have your Departments and CREDIT PLU's built. This list will come from YOU Technology. There are two (2) "Credit Departments." YOU Technology will give you the numbers. One is "Default Credit" and the other is "Misc Credit". They will also give you a list of PLU codes with varying status fields. Used S4 to process in the spreadsheet they sent automatically. These need a negative entry flag set as well.

