

# Technical Bulletin

## NCR “Sidecar” Keypad for 5968 X-Series Displays - Certification

POS-TECH-17:02

July 14, 2017

The NCR “Sidecar” Keyboard for the RealPOS X-Series Display (Class 5968) has been certified with ISS45 V8 v8180-090. This document defines the certification test plan and test results.

### SCOPE

This certification is for the NCR RealPOS X-Series display with Sidecar Keyboard only.

ISS45 V8 was previously certified with the X-Series display only, and now the Sidecar Keyboard accessory for this display is added to that certification.

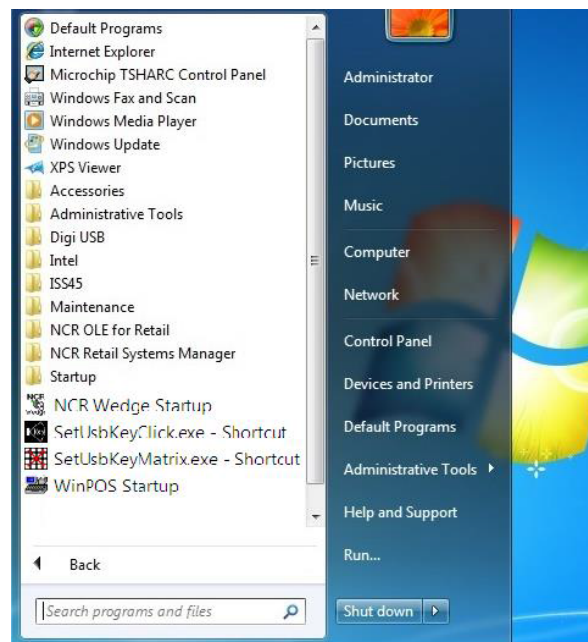
A newer version of USB Utilities ([March\\_21\\_2016\\_USB Utilities.zip](#)) is required for this keyboard model. This report includes information regarding the hardware and software used in the testing and the results.

### CONFIGURATION

NCR 5968-1315 Sidecar Keyboard with X-Series Display	
Equipment Under Test	Part Numbers and Details
NCR “Sidecar” Keypad	7702-K149, 5968-F149
NCR RealPOS X-Series Display	5968-1315-9090 S/N 11-49286493
NCR RealPOS XR8	7607-1300-8801 S/N 30-52922174
5968 12V Power USB Cable	497-0505039 Rev A ID NO. 1432-C478-0040
Standard VGA Cable	Standard VGA Cable
7167 Printer	7167-6021-9001
Configuration of Support Equipment	Part Numbers and Details
POS Software	
ISS45 V8 MFS1	ISS45 V8.1.8.0-90
Other Software	
POSReady 7 SP1 32-bit	D370-1038-0100_01.00.00.01.WIM
RealPOS XR8 NCR BIOS 2.0.6.0	Q170_SPI_2060_USB
Retail Platform Software for Windows	RPSW_4200_32bit_D370_0924 + Patch 4202
Touch Driver	Touch Base Drivers_05_01_1483
IO Networks	IO_Network_Win_7_XP_40002857_J1
USB Utilities	March_21_2016_USB Utilities.zip

## SETUP

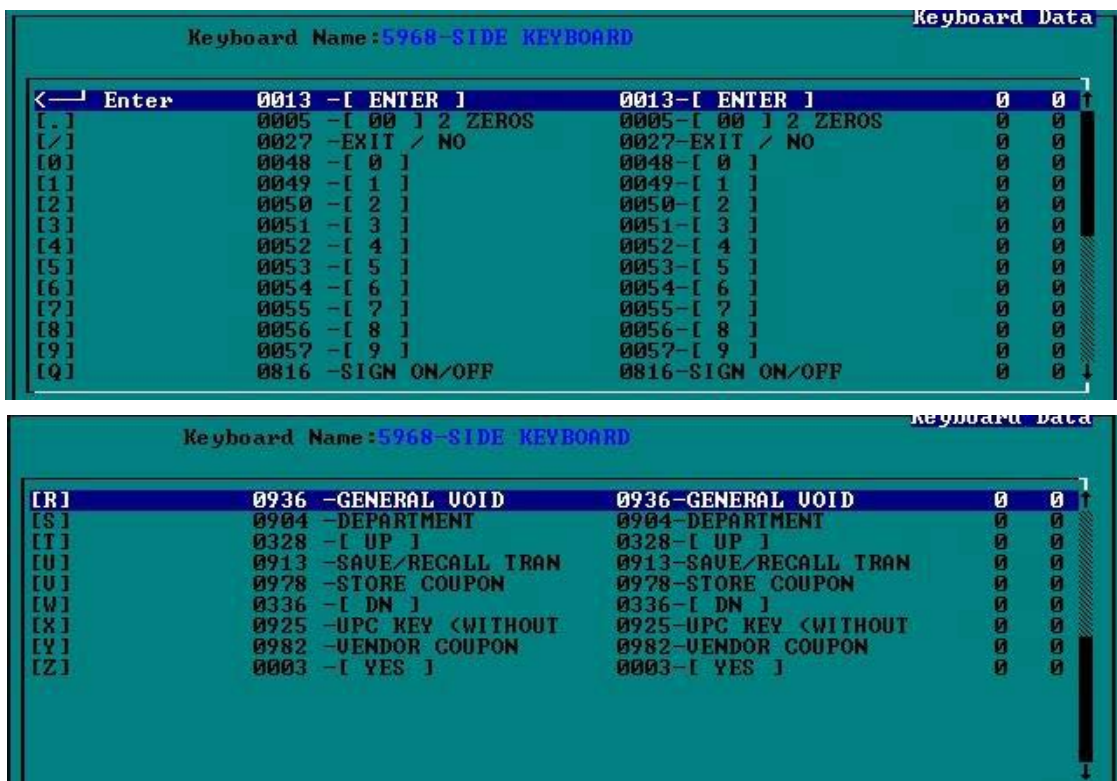
- The NCR RealPOS X-Series Display with Side Keyboard was attached to the above POS.
- From the Channel Partners Website Download "Required Files for 5968 with Side Keyboard.zip"
- Extract the contents of the zip file to a folder. Locate "5968SideKey.reg" and double click to add to registry. This loads the keyboard map file.
- Locate "March\_21\_2016\_USB Utilities.zip" and unzip to C:\Program Files\NCR\USB Keyboard.
- The USB Keyboard folder will need to be created. Once the files are in place, run the Install.bat file and click ok to the 3 message boxes.
- Open Explore window and navigate to the C:\Program Files\NCR\USB Keyboard folder. Highlight the two "Set" programs, right click and select Send to > Desktop create shortcut.
- Go to the Desktop and highlight the two new shortcuts, right click and select cut.
- Click Start, click All Programs, right click Startup and select Open all users from the drop down menu.
- Paste the shortcuts into the right panel.
- Verify that the shortcuts are in the Startup and double click to run both "Set" shortcuts.



## TESTING AND RESULTS

- On MFS under POST Configuration, WinPOS H/W tab, set Keyboard type= Standard, USE OPOS needs to be **UNCHECKED**.
- In Winpos.ini set:
  - TouchScreen=No
  - Display=WideMenuPanel
  - TouchPanelRows=8
  - TouchPanelColumns=1

- You will need to program the keys using Keyboard Programming.
  - The "Q"—"Z" keys, as well as "/", "ENTER" and "00" can be mapped via Keyboard Programming by using the "." (decimal) to map the keys if desired.



## SUMMARY

- Keys were mapped to functions via Keyboard Programming using the above layout. A Keyboard Programming example is also shown above.
- If you wish to allow a long/continued key-press to enable quicker input for a function, you may also program the lower-case letter with that same function.
  - For example, setting both "X" and "x" for function 925 will avoid an INPUT ERROR if that key is held down and would result in additional items being rung up.
- This keyboard works properly with no issues observed.
- The Sidecar Keyboard is **NOT** certified with ScanMaster at this time. This document will be updated when the required ScanMaster installation and/or coding changes are completed.