

Technical Bulletin

ISS45 V7 with Telequip — Setup Guide

ISS45-TECH-09:09

June 3, 2009

ISS45 V7 (7.1.3.0 and forward) can be configured to operate with the Telequip coin dispenser. RS-232 is the only interface currently supported.

The instructions on the following pages provide the instructions for setting up this combination.

This document and information are supplied to StoreNext Retail Technologies personnel and third parties to assist them in doing business with StoreNext. They are not to be used or distributed for any other purpose.

StoreNext Retail Technologies LLC endeavors to ensure that the information in this document is correct and fairly stated, but does not accept liability for any error or omission.

Telequip RS-232 Installation Procedure

These instructions will take you through the process of loading the Telequip test program and how to set up the RS-232 driver (no OPOS support at this time) for the T2+Flex Serial coin dispenser. The Telequip T2+Flex Serial coin dispenser with RS-232 drivers has only been certified with **ISS45 V7.1.3.0-050 or above**.

Limitations:

To use the Telequip T2+Flex Serial coin dispenser with RS-232 drivers you must have one **Male DB9** connection available on the terminal. This could be difficult to achieve on some terminals due to the limited number of **Male DB9** connections.

For this installation you **must** use either **Com 1, 2 or 4**.

Test Program Loading:

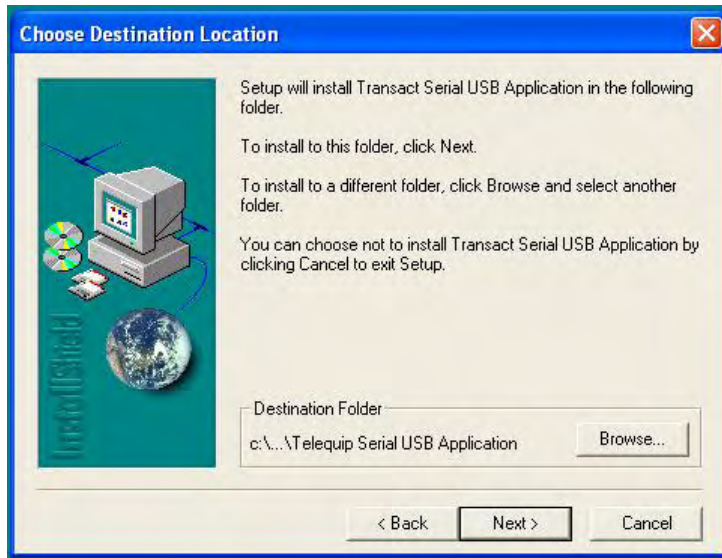
The Telequip T2+Flex Serial coin dispenser test program is contained in the **160-006.ZIP** file. Extract the files in this zip file to a directory or thumb drive for installation.

- 1) Double click on Disk1\Startup.exe, at the “Welcome” window click on NEXT -

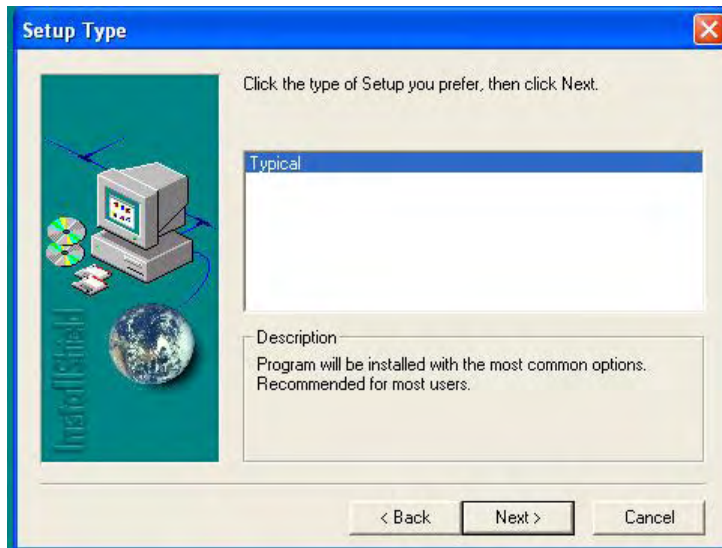


Telequip RS-232 Installation Procedure

- 2) At the “Choose Destination Location” window, except the default setting and click on NEXT -



- 3) At the “Setup Type” window accept the default setting and click on NEXT -

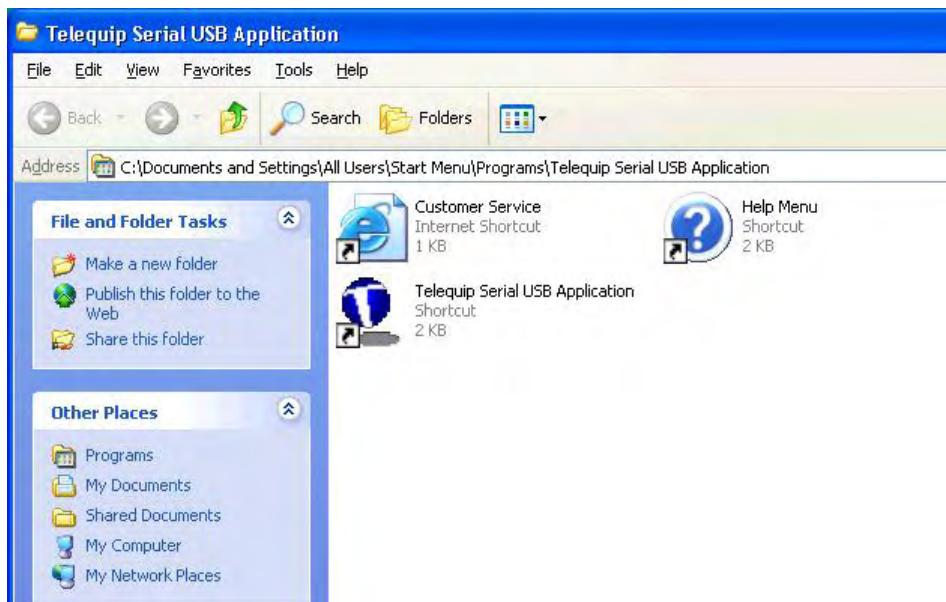


Telequip RS-232 Installation Procedure

- 4) At the “Select Program Folder” window accept the default settings and click on NEXT -

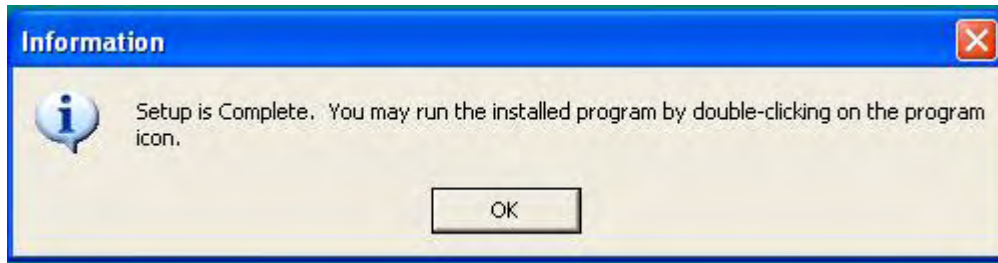


- 5) A window titled “Telequip Serial USB Application” will open automatically, close this window -

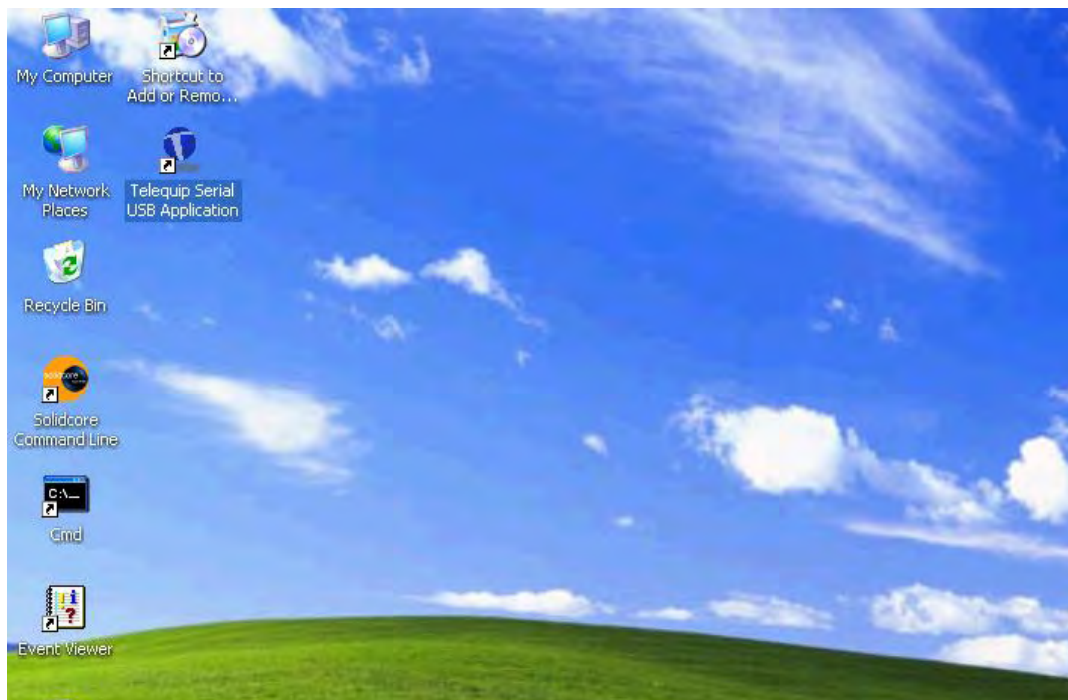


Telequip RS-232 Installation Procedure

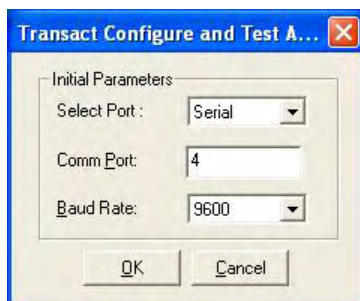
- 6) At the “Information” window click on OK -



- 7) Double click on the “Telequip Serial USB Application” desktop icon -

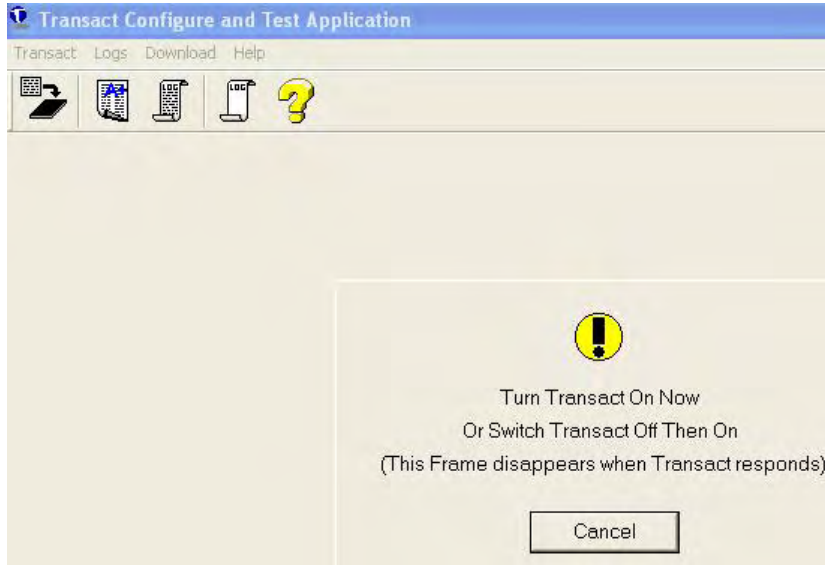


- 8) At the “Transact Configure and Test Application” window set the “Select Port:” to SERIAL, set the COMM PORT to a free male DB9 port (“Com 4” for this example), set the BAUD RATE to 9600 and click OK -

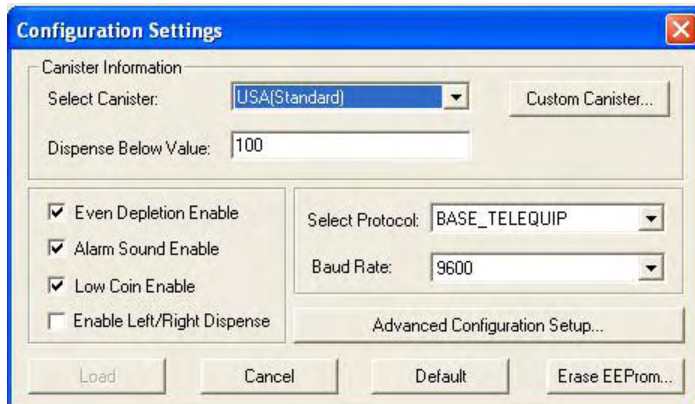


Telequip RS-232 Installation Procedure

- 9) The “Transact Configure and Test Application” window will open. Click on TRANSACT and then click on CONFIGURATION PROPERTIES. If the coin dispenser [Transact] is turned off (power off), turn power on at this time. If the coin dispenser is turned on (power on) turn it off and back on again -

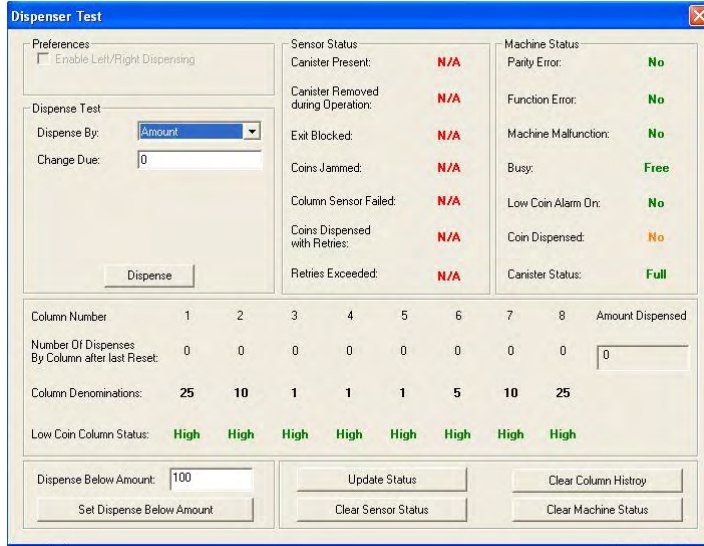


- 10) The “Configuration Settings” window will open, set the “Select Canister:” to USA and click on LOAD. **NOTE** – Leave the “Select Protocol” set to BASE_TELEQUIP at this time -

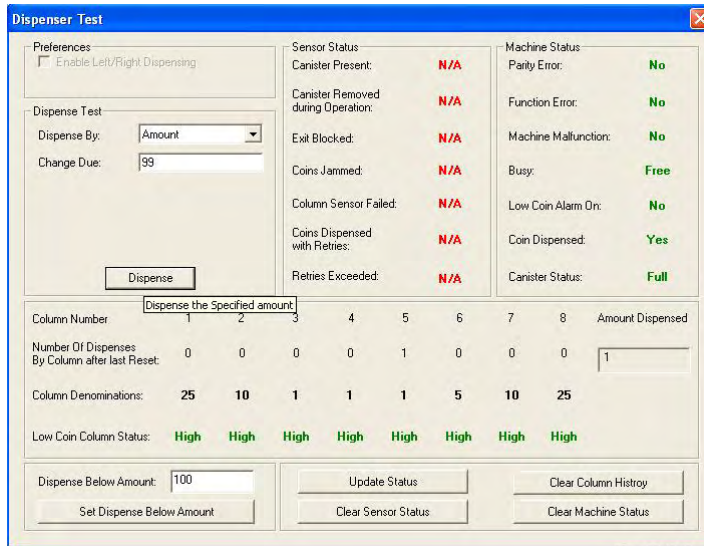


Telequip RS-232 Installation Procedure

11) At the “Dispenser Test” window set the “Dispense By:” to AMOUNT -

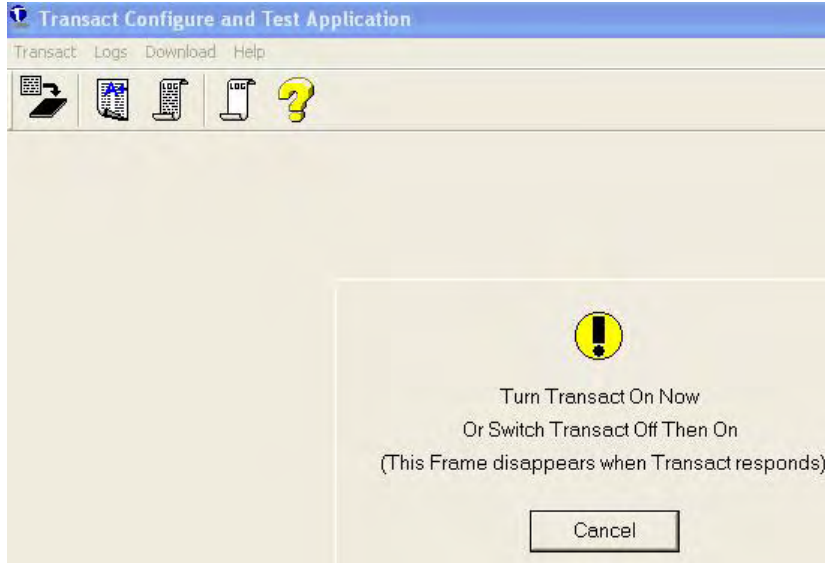


12) Set the “Change Due” to 99 and click on DISPENSE. Using ‘99’ will cause all solenoids to fire dispensing the maximum amount of change possible with any coin dispenser -

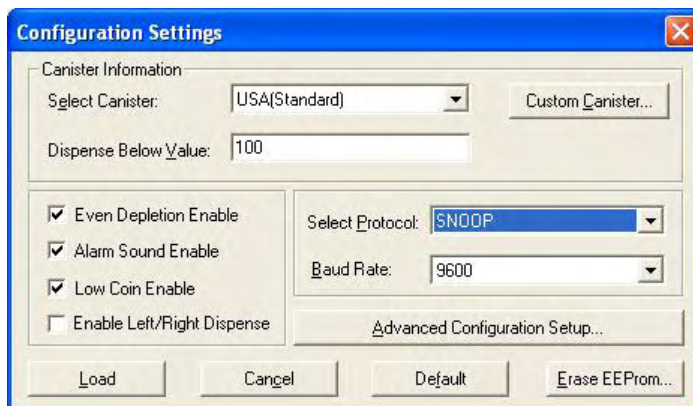


Telequip RS-232 Installation Procedure

- 13) If this test works then your coin dispenser is working properly. Next you will have to change the “Protocol” for the coin dispenser to work with ISS45 V7.1.3.0-050 or above.
- 14) The “Transact Configure and Test Application” window will open. Click on TRANSACT and then click on CONFIGURATION PROPERTIES. If the coin dispenser [Transact] is turned off (power off), turn power on at this time. If the coin dispenser is turned on (power on) turn it off and back on again -



- 15) The “Configuration Settings” window will open, set the “Select Canister:” to USA and click on LOAD. Change the “Select Protocol” set to SNOOP and then click on LOAD -



- 16) Close the “Transact Configure and Test Application” window.

Telequip RS-232 Installation Procedure

- 17) In ISS45 V7.1.3.0-050 or above go to screen 6-1-4-1, select the proper post and set the “Print to port commands” to the proper comm. port that your coin dispenser is connected to (in the example screen below this was “Com 4”) -

