

## Technical Bulletin

### ISS45 V7 Auto-Execution of Templates at End-of-Day

ISS45-TECH-06:07

March 29, 2006

The purpose of this document is to allow a user to edit ISS45 V7 templates, export changes and allow the End of Day to automate the download. As it stands today, pcAnywhere is used and if there are many stores, this requires time to perform.

This process allows the user to create the changes on a lab system for a host to FTP (or use other transfer mechanism) to the stores.

The following is the content of this document:

- Creating the changes to templates using Presentation Manager
- Exporting to a file name that is recognized by an internal routine
- Ximport.bat (PW\_B\_XXX.TPL)
- Using the PCMNTPUT command
- Setting up an End of Day user hook (EODHUK12.BAT)
- Screen captures of exact procedure
- Screen of POST at End of Day
- Above file examples follow

To Your Success,

***Mike***

---

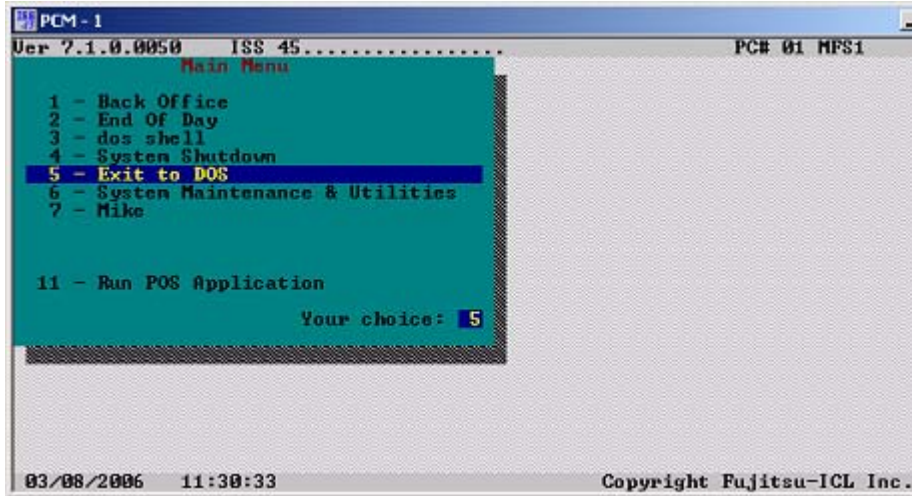
*Mike Kawczynski*  
*Senior Field Systems Engineer*

This document and information are supplied to StoreNext Retail Technologies personnel and third parties to assist them in doing business with StoreNext. They are not to be used or distributed for any other purpose.

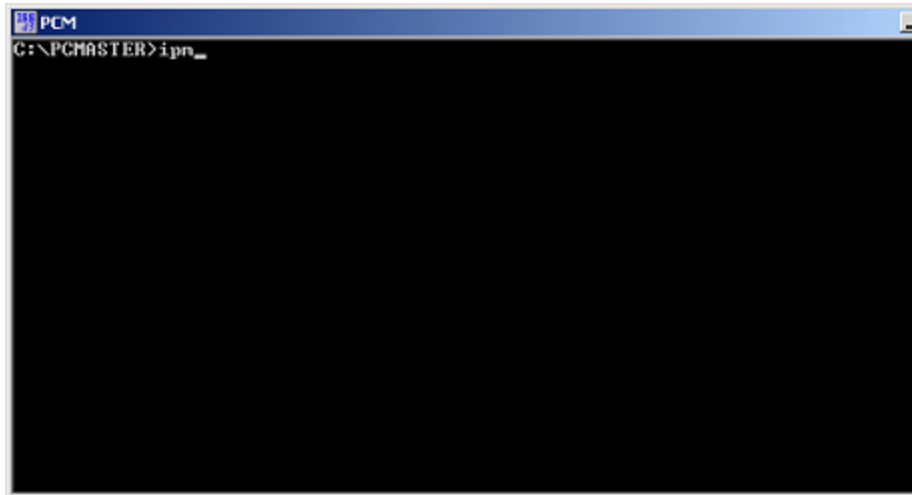
StoreNext Retail Technologies LLC endeavors to ensure that the information in this document is correct and fairly stated, but does not accept liability for any error or omission.

## USING PRESENTATION MANAGER TO EDIT AND EXPORT TEMPLATES

- Exit to DOS from menu



- - Type *ipm* and *Enter* for Presentation Manager

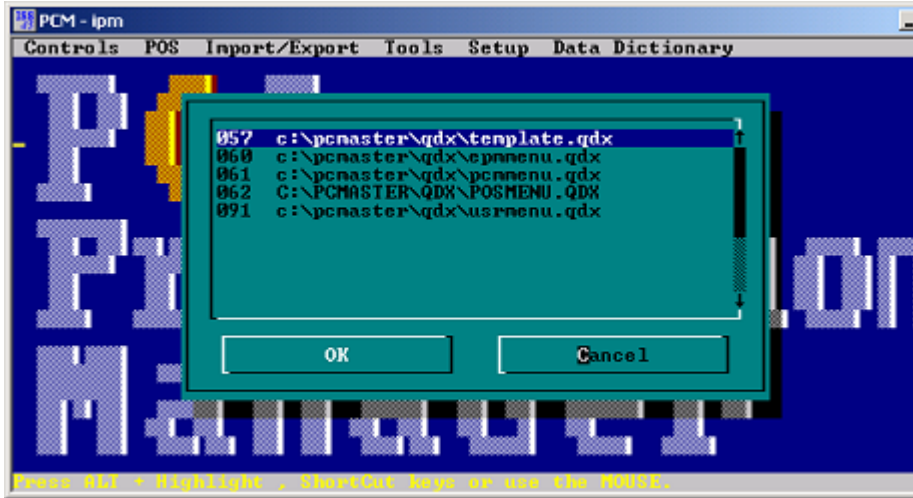




- Depress *ALT-S* at same time
- Depress *Enter* for QDX file set



- Select Template.qdx and depress *Enter*



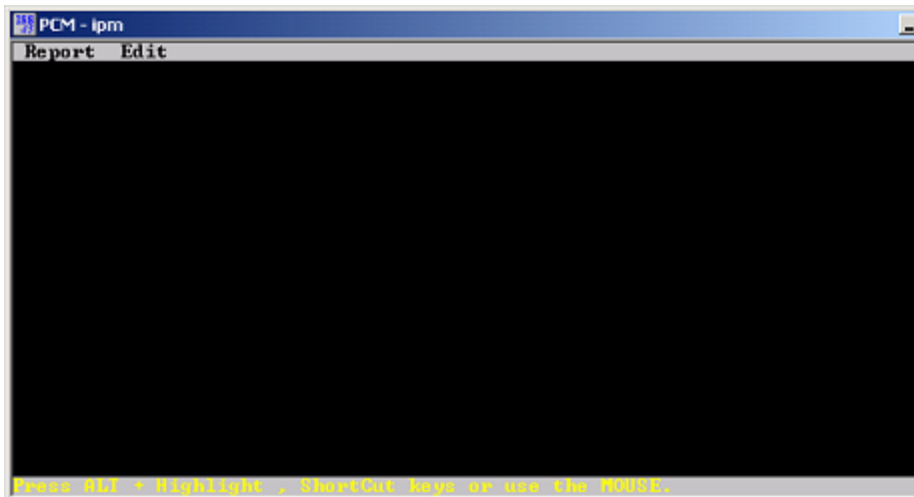
- *Arrow down (or alt F4)* for Reports



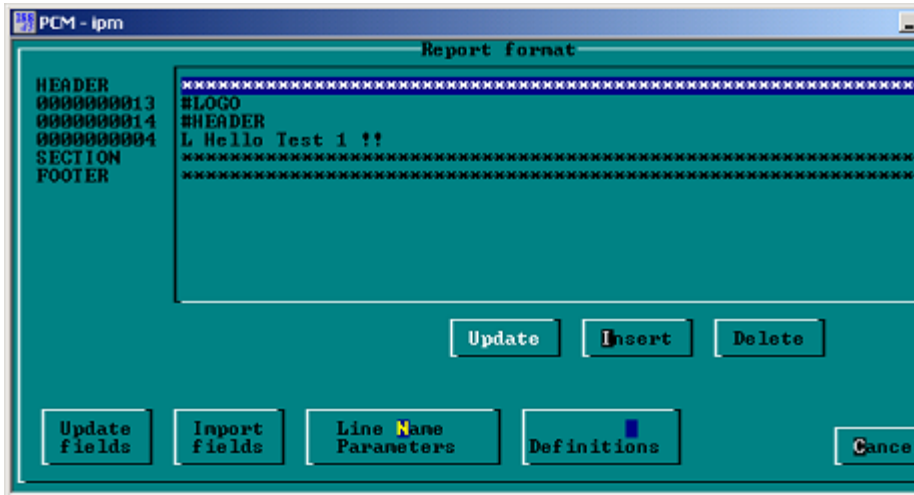
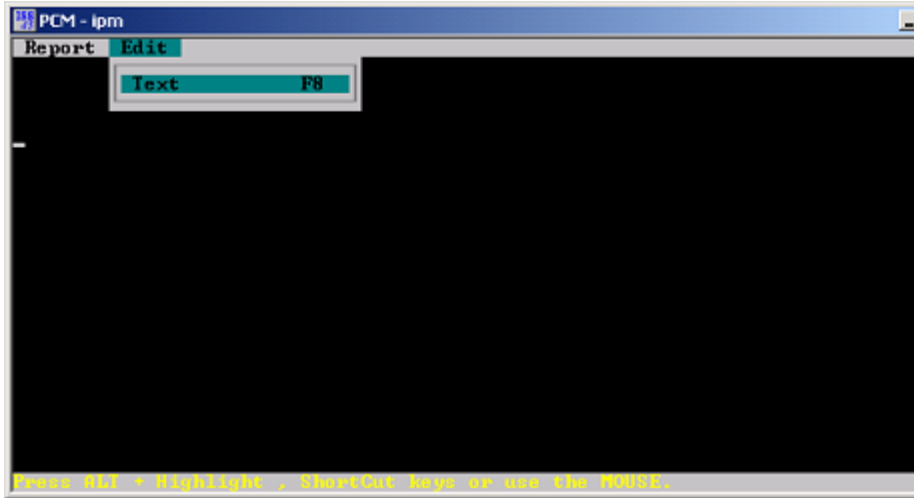
- OEMMSxxxxx is used for target messages
- This example uses OEMMS 12345, highlight and press *Enter*



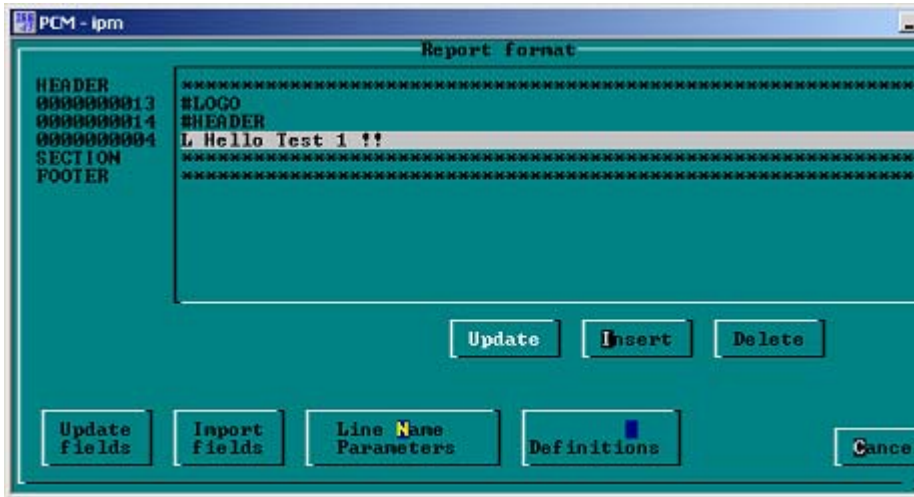
- A black screen appears



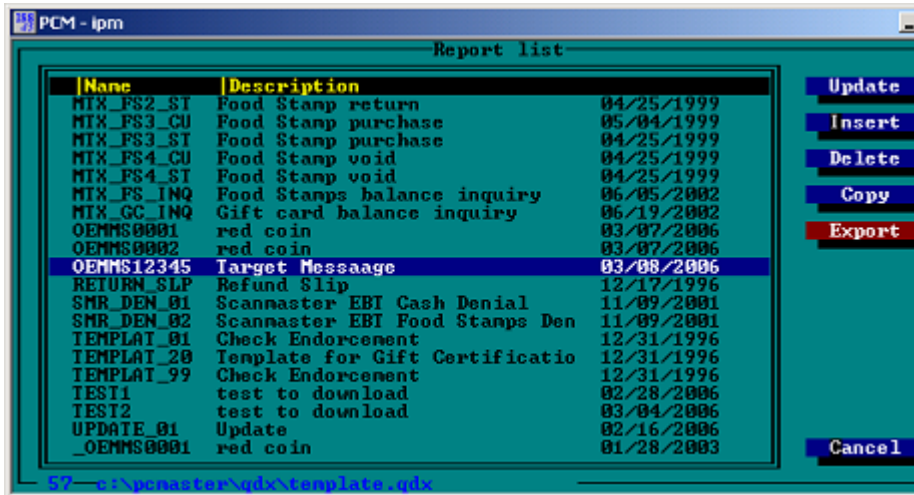
- > Depress *ALT-E* at the same time (edit)
- > Text drops down, press *Enter*



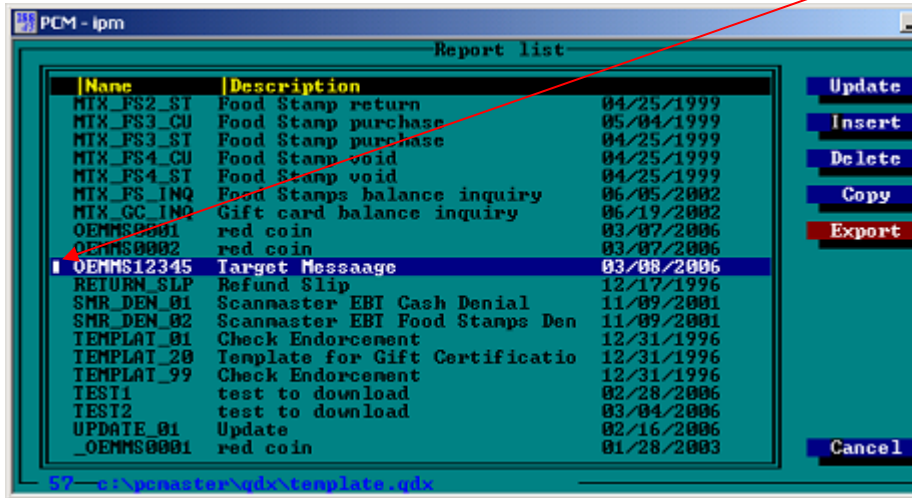
- Depress *Enter* for Update
- *Arrow* to line to change
- To insert a new line *tab* to Insert and press *Enter*
- Press *Esc* to get back to Report List



- Highlight message and *TAB* to Export, then press *Enter*



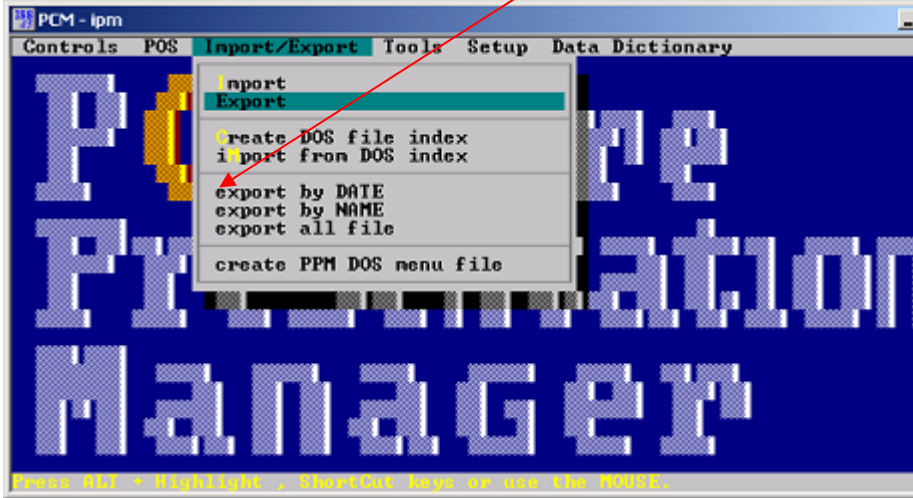
- > A small white box appears beside Templates to be Exported



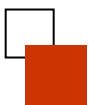
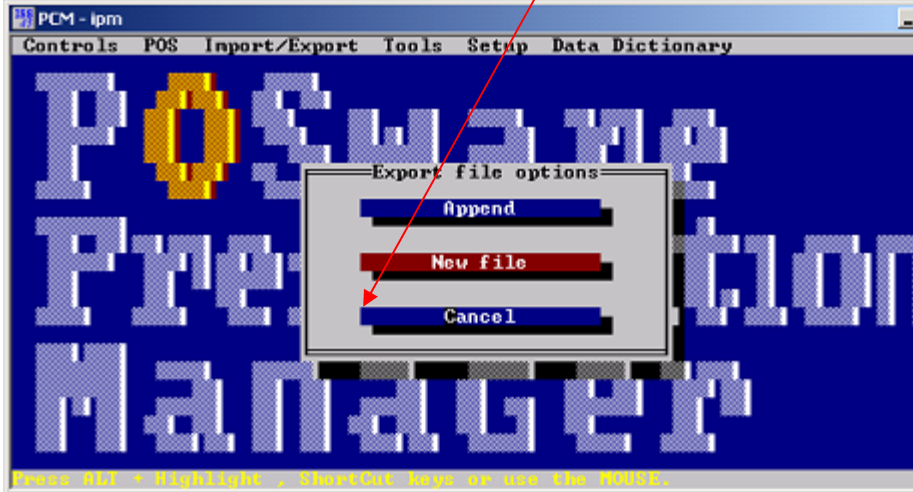
- > After Exports are selected, *Esc* to this screen



- Depress *Alt-I* for drop down
- *Arrow* down to Export and depress *Enter*



- *TAB* to New File and depress *Enter*

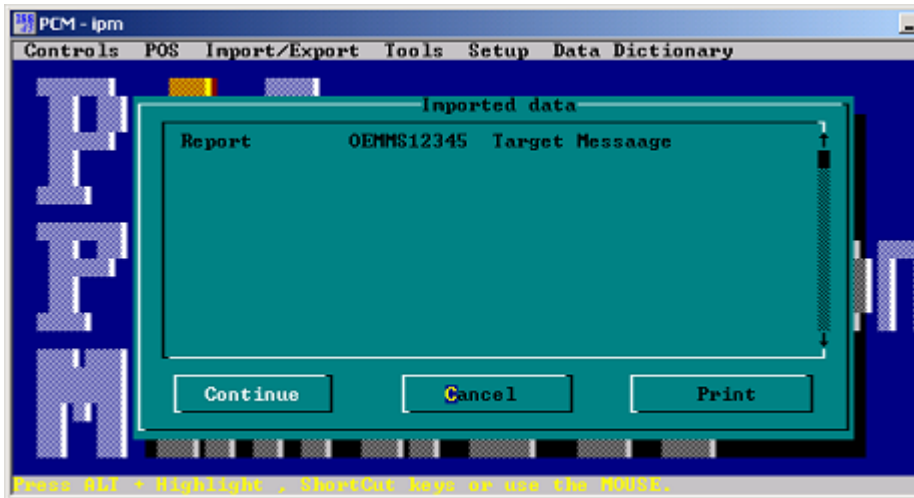


For XIMPORT to recognize template changes the file name is as follows:

- PW\_B\_XXX.TPL, where XXX= 001, 002, 003, etc., and .TPL is templates
- Type in correct file name and press *Enter*



- File(s) marked for export are displayed, press *Enter* to continue



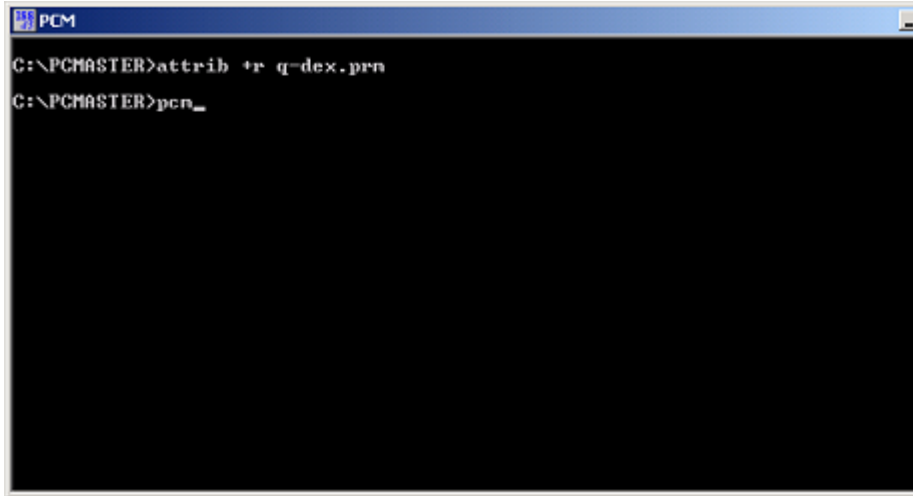
- When done, this will display



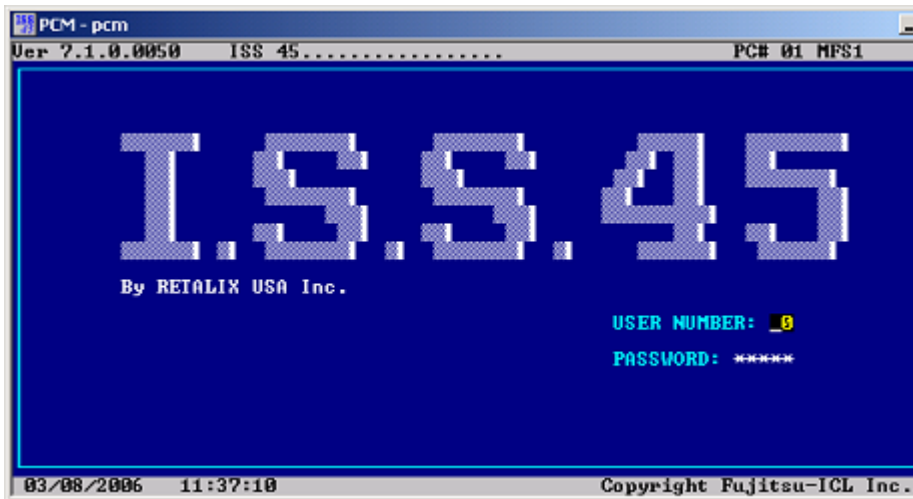
- Depress *ALT C*, then *X* and *Enter* to exit



- To get back to ISS45, type *pcIBm* then *Enter*
- XIMPORT will now recognize the changes.



```
PCM
C:\PCMASTER>attrib +r q-dex.prn
C:\PCMASTER>pcn_
```



```
PCM - pcm
Ver 7.1.0.0050 ISS 45..... PCB 01 MFS1

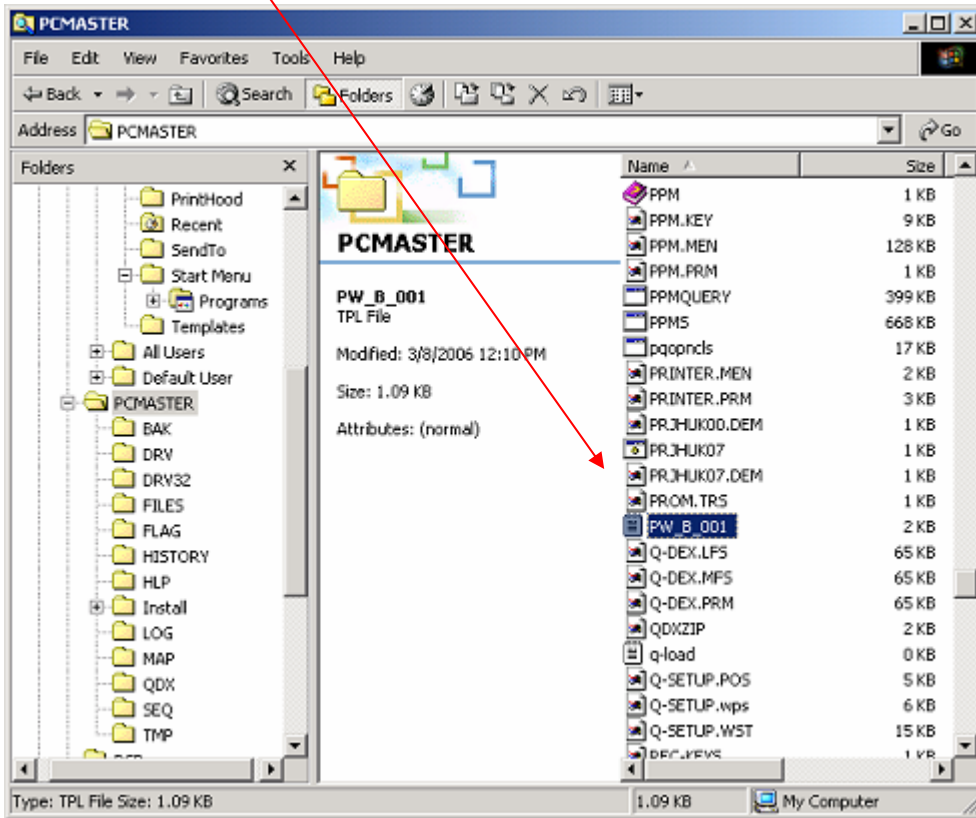
ISS.45
By RETALIX USA Inc.

USER NUMBER: 0
PASSWORD: *****

03/08/2006 11:37:10 Copyright Fujitsu-ICL Inc.
```



The Template Export File resides in the PCMASTER folder. It is deleted after XIMPORT is executed



- For the End of Day to execute the Import and download to the lanes a batch file needs to be created. Using EODHUK12.BAT allows the End of Day to progress through all functions and then executes this hook.

```

Select PCM - edit e-of-day.bat
File Edit Search View Options Help
C:\PCMASTER\E-OF-DAY.BAT

pcnut132 /eodend
text2fil #e-of-day.bat #21 #USEND #8
:USEND

if exist EODHUK12.BAT call EODHUK12.BAT
cls
text2fil #e-of-day.bat #21 #EODHUK12 #8
:EODHUK12

printeod ** Start ASP Hook 03 (E-OF-DAY.BAT) **
if exist ASPHUK03.BAT call ASPHUK03.BAT
text2fil #e-of-day.bat #21 #ASPHUK03 #8
printeod ** End ASP Hook 03 (E-OF-DAY.BAT) **
:ASPHUK03

printeod preform Q-buster houskeeping >> log\e-of-day.log
cls
PCMQBUST.exe
text2fil #e-of-day.bat #21 #PCMQBUST #8
:PCMQBUST

Fi=Help | Line:1218 Col:1

```

- Create EODHUK12.BAT (already created here)

```

PCM - edit e-of-day.bat
File Edit Search View Options Help
Open

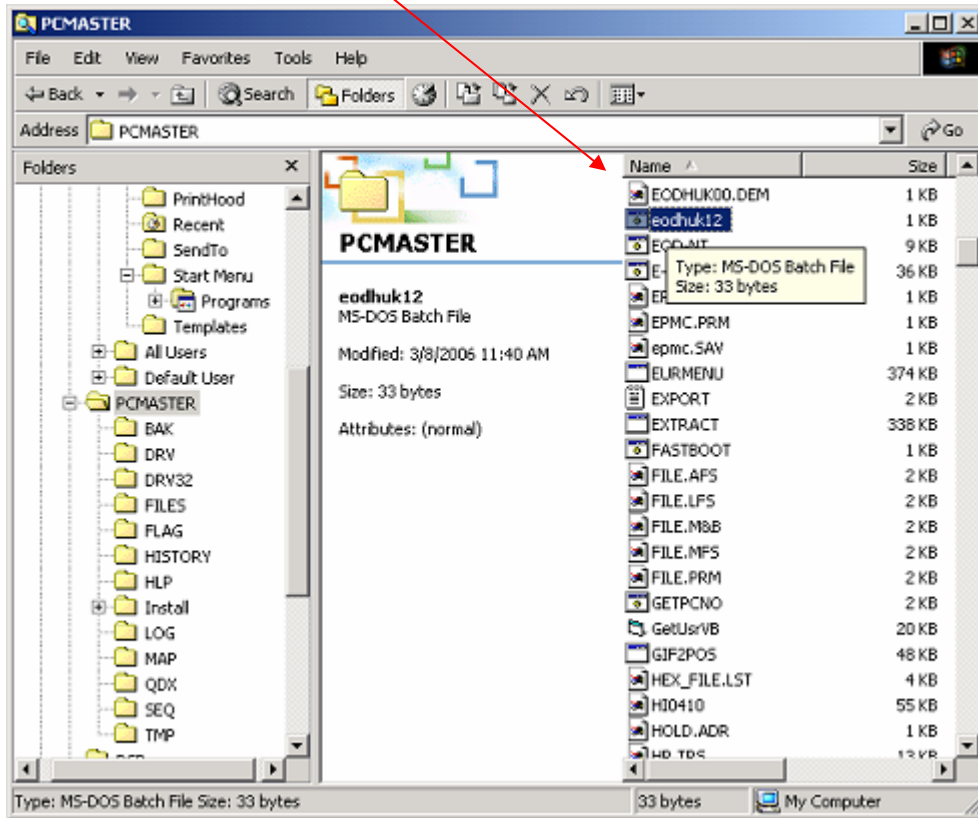
File Name: [eodhuk12.bat.....]
C:\PCMASTER
Files:
Directories:
DATES.IMP
DOEOD.BAT
DRUERROR.BAT
E-OF-DAY.BAT
ELDATEOD.BAT
ENABLE.WIP
EOD-BUP.BAT
EOD-NT.BAT
EODCLEAR.BAT
EODHUK00.DEM
eodhuk12.bat
EPMC.OLD
..
BAK
DRU
DRU32
FILES
FLAG
HISTORY
HLP
[ ] Open Read-only
[ ] Open Binary
Line Width: [78...]
OK Cancel Help

Fi=Help Enter=Execute Esc=Cancel Tab=Next Field

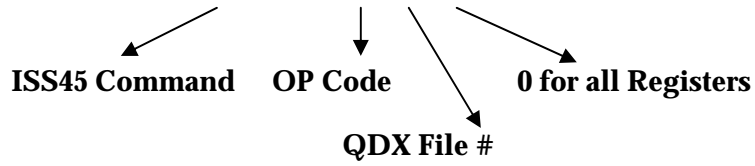
```



- EODHUK12.BAT resides in the PCMASTER folder



- This batch executes **XIMPORT.BAT** and looks for the **PW\_B\_XXX.TPL** which will import the templates
- The command **PCMNTPUT 64 57 0** is then executed



The screenshot shows a Notepad window titled "PCM - edit e-of-day.bat" with the following text:

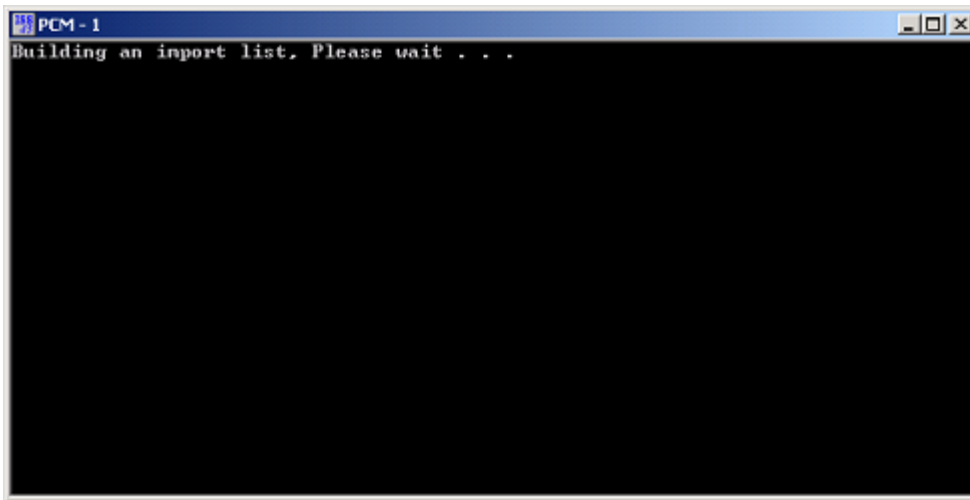
```
ximport  
pcmntput 64 57 0
```

The status bar at the bottom indicates "Line:3 Col:1".

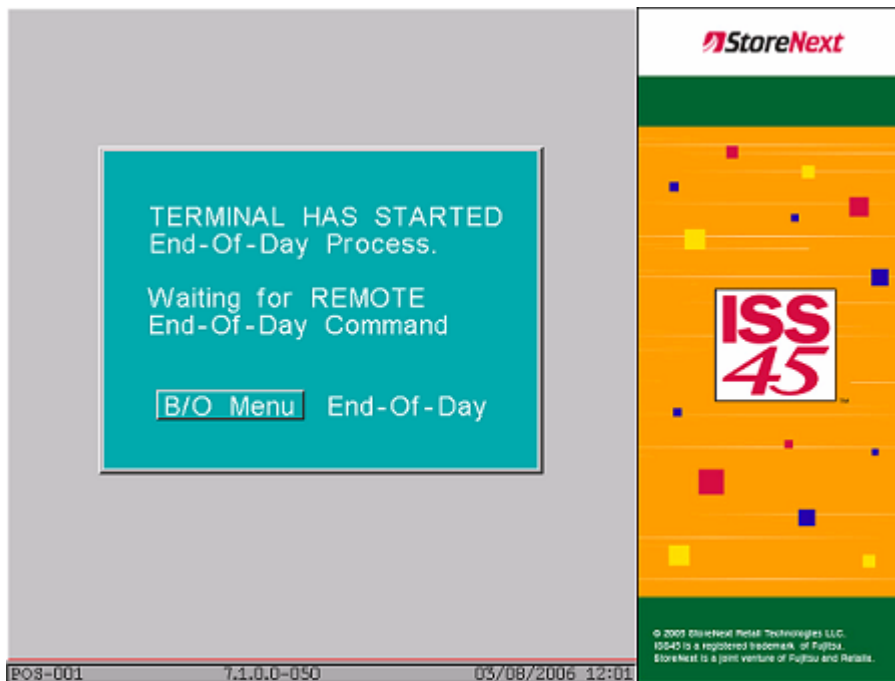
- This will download to all registers



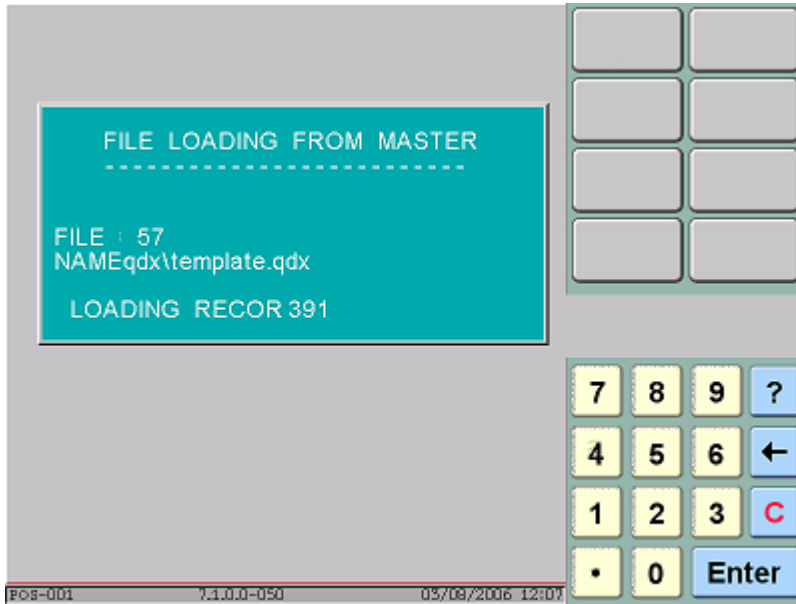
- End of Day screen that displays as the Templates are imported



- End of Day is activated at the lanes



- > The following is a result of the PCMNTPUT command in the EODHUK12.BAT file



- > This sample receipt shows the result

