

Technical Bulletin

ENCOR SQL 2008 Setup — Additional Requirements

POS-TECH-19:01

March 4, 2019

Note: this is the initial Issue. A similar Technical Bulletin was released August 8, 2012 for ISS45 ([ISS45-TECH-12:11](#)).

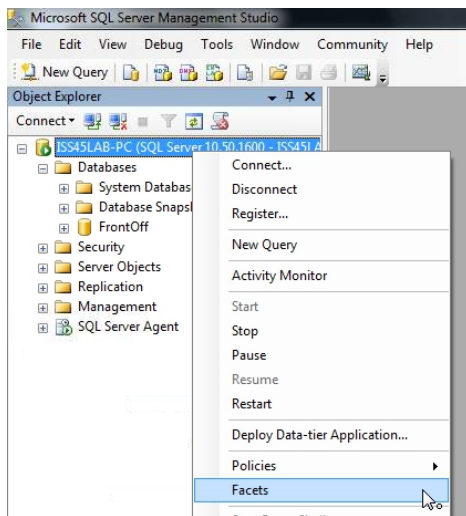
ISSUE

Price changes are made in the ENCOR Back-Office (ABO). These changes are applied to ENCOR Front Office but are not being relayed to the POS terminals.

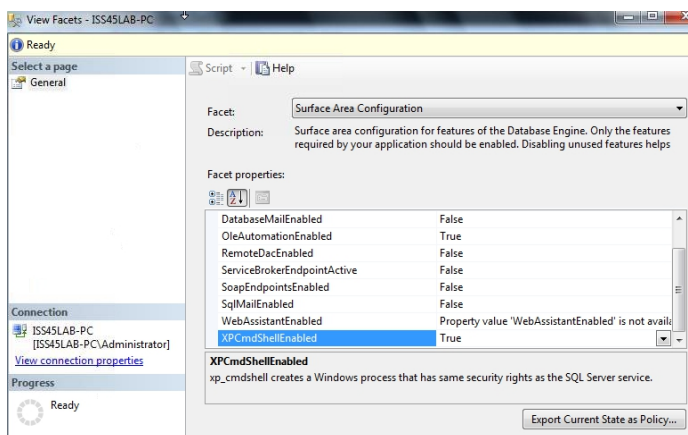
RESOLUTION STEPS

Setting `OLEAutomationEnabled` and `XpCmdShellEnabled` to **TRUE** in SQL is required.

1. Open SQL Management Studio, right click on the top link and select FACETS as seen here:



2. Use the drop-down and select Surface Area Configuration – then set `OLEAutomationEnabled` and `XpCmdShellEnabled` to **TRUE** as seen here:



3. Reboot servers after these parameter changes.