

Technical Bulletin

ISS45 V8 Supervisor Privileges Parameter

ISS45-TECH-05:26

May 10, 2005

On a V8 system, at screen General System Parameters | Store | POST | General | Supervisor Privilege (see Figure 1 on next page below), are parameter settings that are used by programs external to ISS45 (for example: MicroTrax/MTXEPS).

The external program will use these settings to determine if the cashier logged onto a POST has manager privileges (see Figure 2 on next page below) when performing a specific transaction (for example: control checks, check approval, etc). If the cashier logged on at the time does not have the proper privilege an error will appear that reads "Invalid Manager Privileges."

Some external programs (for example again MicroTrax) will interpret this parameter when set to indicate that the logged-on cashier's ID should be used as the manager's ID.

Scenario #1 – Supervisor Privilege level 5 is checked. Cashier 101 is logged onto the post and has privilege levels 1, 2 and 3 assigned. Manager 999 has privilege level 5. The bank switch requires a privilege level 5 for manager approval. The cashier processes a check for \$350.00. When the bank switch sees this transaction it does the following:

- A. Uses the cashiers ID (101) as the managers ID.
- B. Checks to see if the managers ID (which is now 101) has the proper privilege assigned to approve the check being processed (in this case ID 101 does not).
- C. Sends back a message to the POST: "Invalid Manager Privileges."
- D. The cashier calls for a manager who enters their ID (999), the bank switch checks to see if ID 999 has the proper privilege level, it does, and the check is processed. Note: if the bank switch finds problems with the check – insufficient funds for example – the appropriate message will be displayed.

Scenario #2 – Supervisor Privilege level 5 is checked. Cashier 101 is logged onto the post and has privilege levels 1, 2, 3, 4 and 5 assigned. Manager 999 has privilege 5. The bank switch requires a privilege level 5 for manager approval. The cashier processes a check for \$350.00. When the bank switch sees this transaction it does the following:

- A. Uses the cashier's ID (101) as the manager's ID.
- B. Checks to see if the manager's ID (which is now 101) has the proper privilege assigned to approve the check being processed (in this case ID 101 does).
- C. The check is processed by the bank switch. Note: if the bank switch finds problems with the check – insufficient funds for example – the appropriate message will be displayed.

Scenario #3 – No Supervisor Privilege levels are checked.

See Scenario #1 above for results.

This document and information are supplied to StoreNext Retail Technologies personnel and third parties to assist them in doing business with StoreNext. They are not to be used or distributed for any other purpose.

StoreNext Retail Technologies LLC endeavors to ensure that the information in this document is correct and fairly stated, but does not accept liability for any error or omission.

Scenario #4 – All Supervisor Privilege levels are checked.
See Scenario #2 above for results.

Figure 1

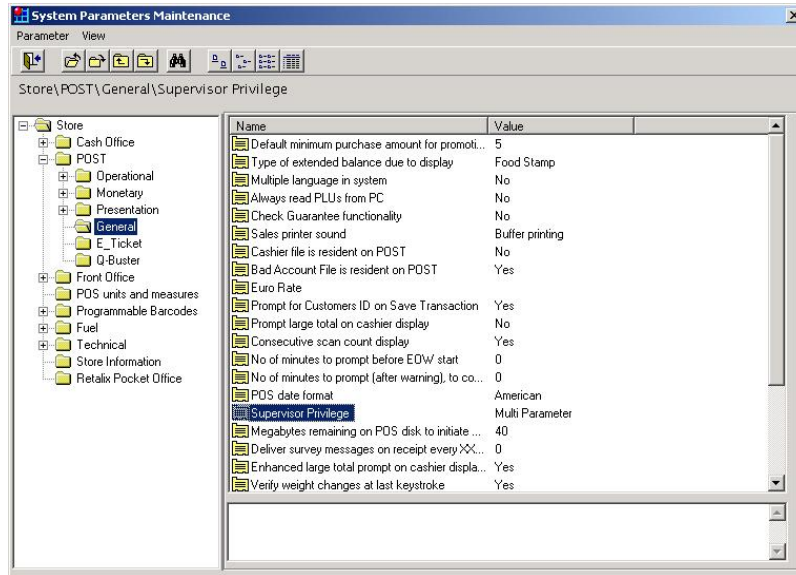
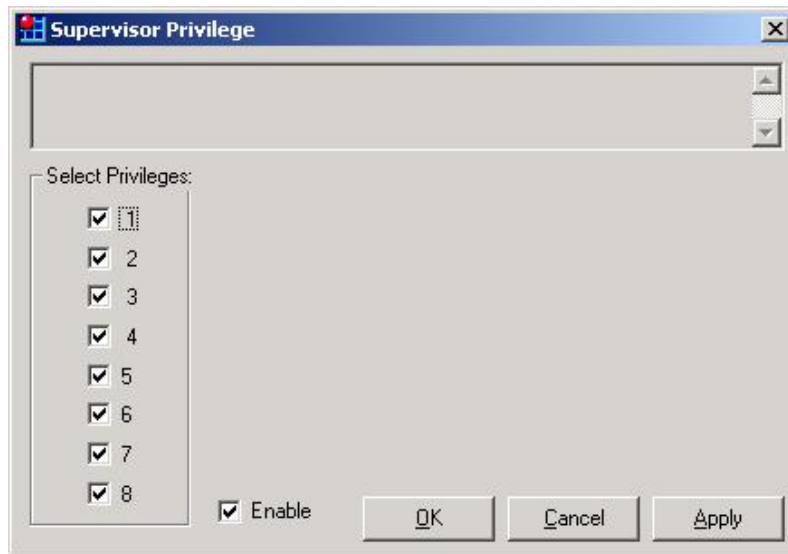


Figure 2



To Your Success,

