

Technical Bulletin

ISS45 Blackhawk Setup with 7.1.0.1

ISS45-TECH-06:10

May 16, 2006

The attached document describes the setup of ISS45's 7.1.0.1 gift card handling features to operate in conjunction with the Blackhawk gift card system. This includes the "Barcode Programming" configuration with vendor gift cards, PLUs, software keys and the WinEPS system.

To Your Success,

A handwritten signature in blue ink, appearing to read "Anthony van Severen".

Anthony van Severen

This document and information are supplied to StoreNext Retail Technologies personnel and third parties to assist them in doing business with StoreNext. They are not to be used or distributed for any other purpose.

StoreNext Retail Technologies LLC endeavors to ensure that the information in this document is correct and fairly stated, but does not accept liability for any error or omission.

HOW TO SET UP EAN 128 GIFT CARDS IN ISS45 V7 TO WORK WITH BLACKHAWK

Vendor Gift Cards come in various forms and from a variety of vendors. The EAN 128 barcode is 30 digits long and consists of an 11 digit PLU number and a 19 digit Account Number. Depending on the vendor, this 30 digit number may be printed on the gift card itself which makes it simpler to determine the PLU number (see the Best Buy gift card below) as it will be the first 11 digits of the 30 digit barcode.

- Purchases deducted from Gift Card until balance reaches zero
- Reload Card at any U.S. Best Buy retail location
- Check Gift Card balance at any U.S. Best Buy retail location or call 1-888-716-7994. *Must have Card number available*
- Call 1-888-BEST BUY (1-888-237-8289) for a location nearest you
- Receipt will show remaining balance
- No expiration date
- Terms and Conditions subject to change without notice
- This Card is issued by Best Buy

379031903422499



Cards cannot be accepted until activated • Redeemable in any U.S. Best Buy retail location for merchandise or services only • Not redeemable for cash • Lost, stolen or damaged Cards replaced only with valid proof of purchase to extent of remaining Card balance • Not a credit or debit card • Not valid as payment on Best Buy credit card



076750014150000379031903422499

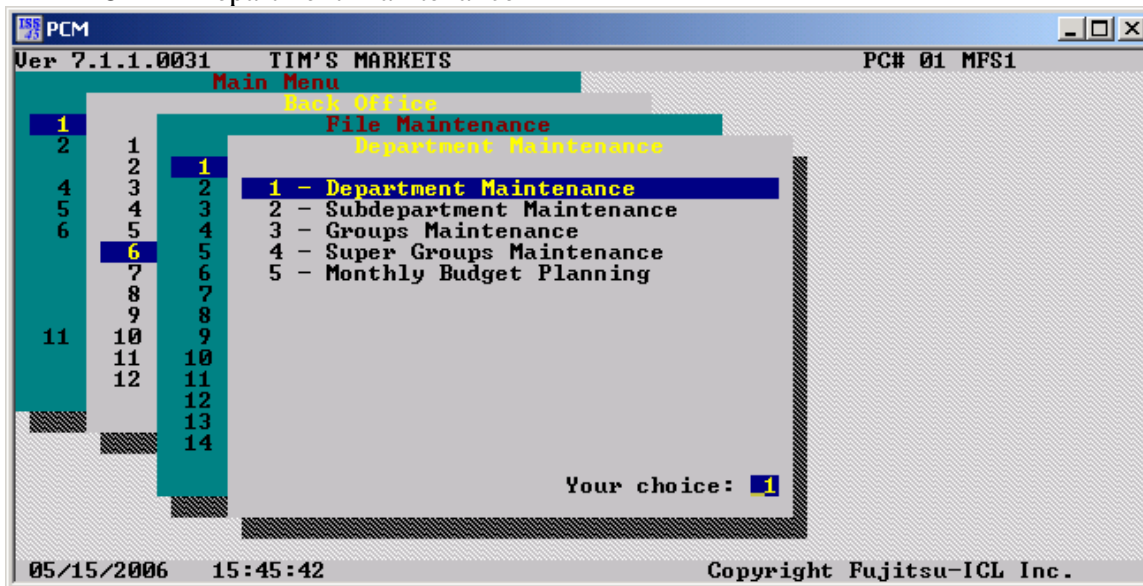
PLU Number
(11 Digits)

Account Number
(19 Digits)

© 2005 BEST BUY

Note: In the cases where the Vendor Gift Card might not display any numbers it is possible to use "Inquiry" and scan the barcode on an EAN 128 enabled scanner to determine the PLU number.

- Open Department Maintenance
 - 1 - Back Office
 - 6 - File Maintenance
 - 1 - Departments File
 - 1 - Department Maintenance

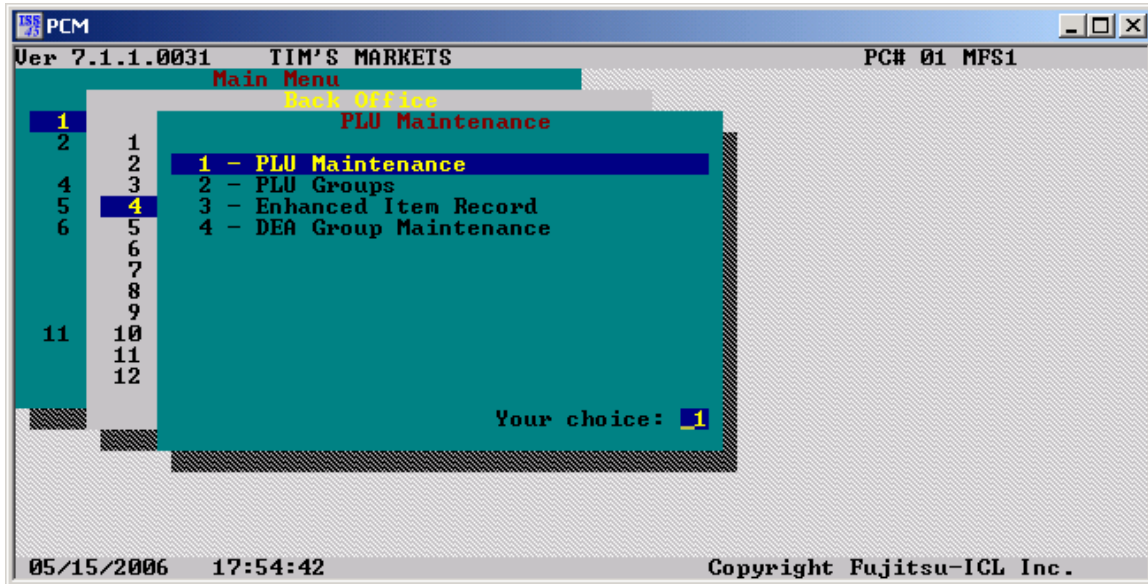


- Add a Vendor Gift Card Department
 - **Insert**
 - Add Department number: **400**
 - Add Department name: **EAN128 GIFT CARD**
 - Add Maximum value: **500.00**
 - Add Minimum value: **.01**
 - **Check** Department in use
 - Press **[F2]** **Update**



- Note: Store Gift Cards can be implemented using the existing PLU Range feature in Gift Card Options. Vendor Gift Cards (EAN 128 Gifts Cards) are implemented through the Department Range in the Gift Card Options, though it is allowable for the Store Gift Cards to be linked to the Vendor Gift Card department.

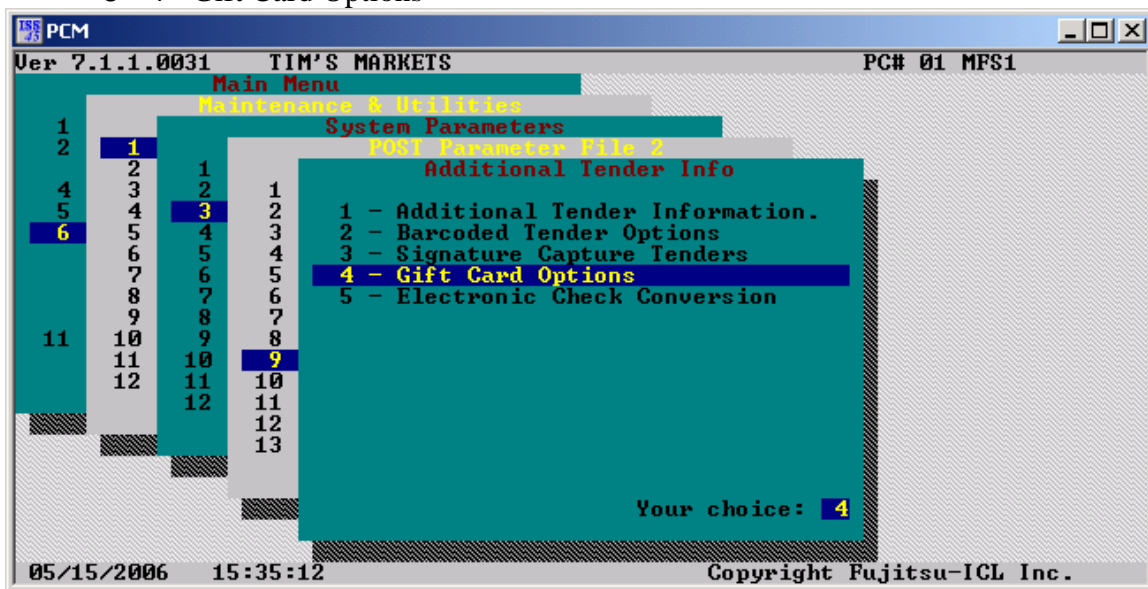
- Open PLU Maintenance
 - 1 - Back Office
 - 4 - PLU Maintenance
 - 1 - PLU Maintenance



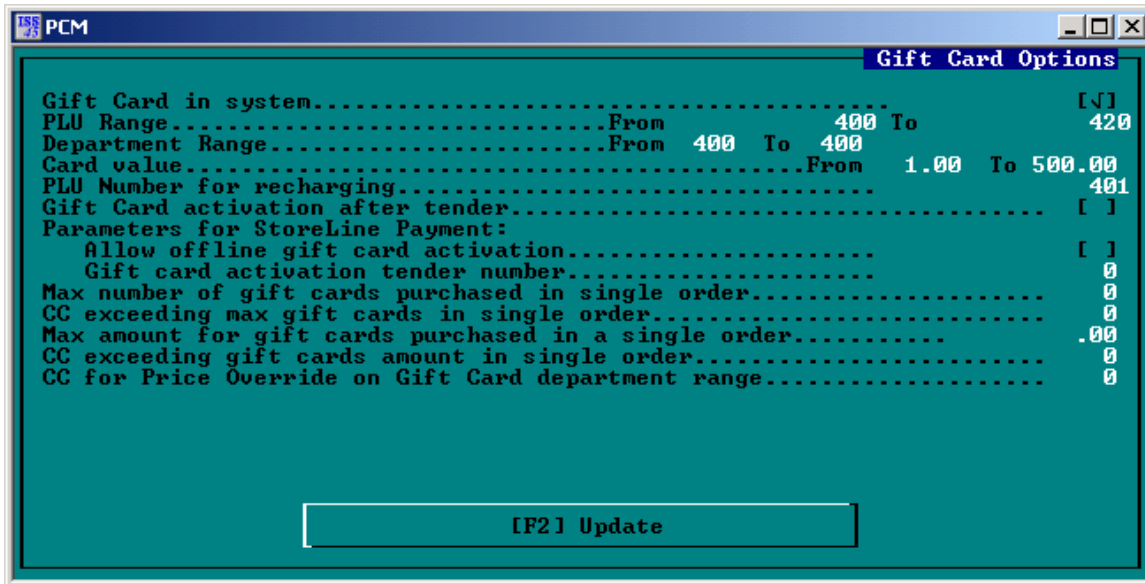
- Create a Vendor Gift Card PLU
 - **Insert**
 - Item UPC Code: **7675001415**
 - Item description: **BEST BUY GIFT CARD**
 - POST item description: **BEST BUY GIFT CARD**
 - Department number: **400**
 - Quantity: **1**
 - Price: **50.00**
 - **Check** Discount prohibited
 - Press **[F2]** **Update**



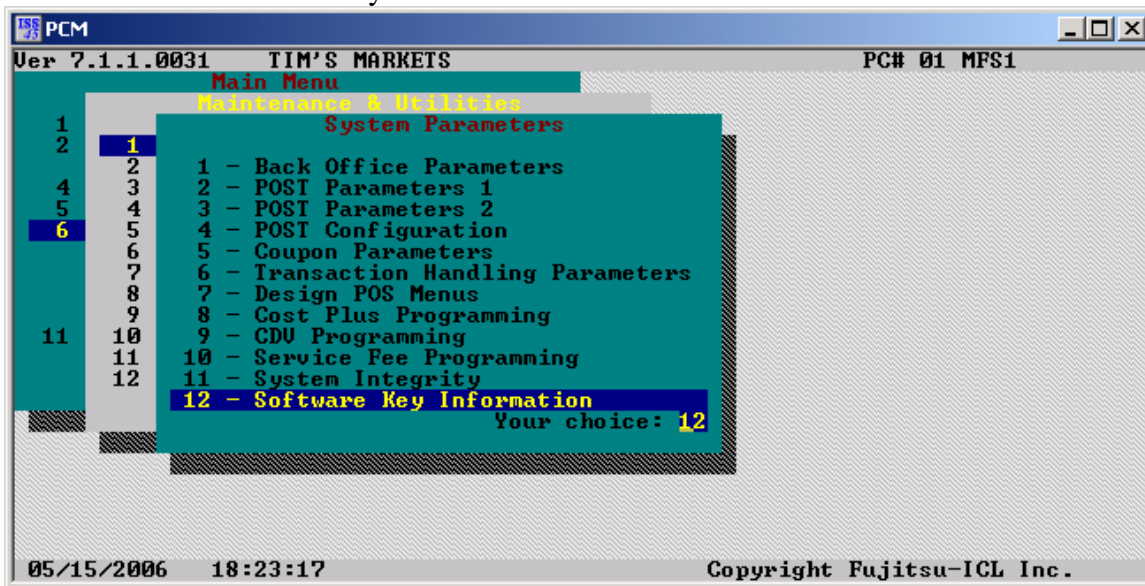
- Open Gift Card Options
 - 6 - System Maintenance & Utilities
 - 1 - System Parameters
 - 3 - POST Parameters 2
 - 9 - Additional Tender Information
 - 4 - Gift Card Options



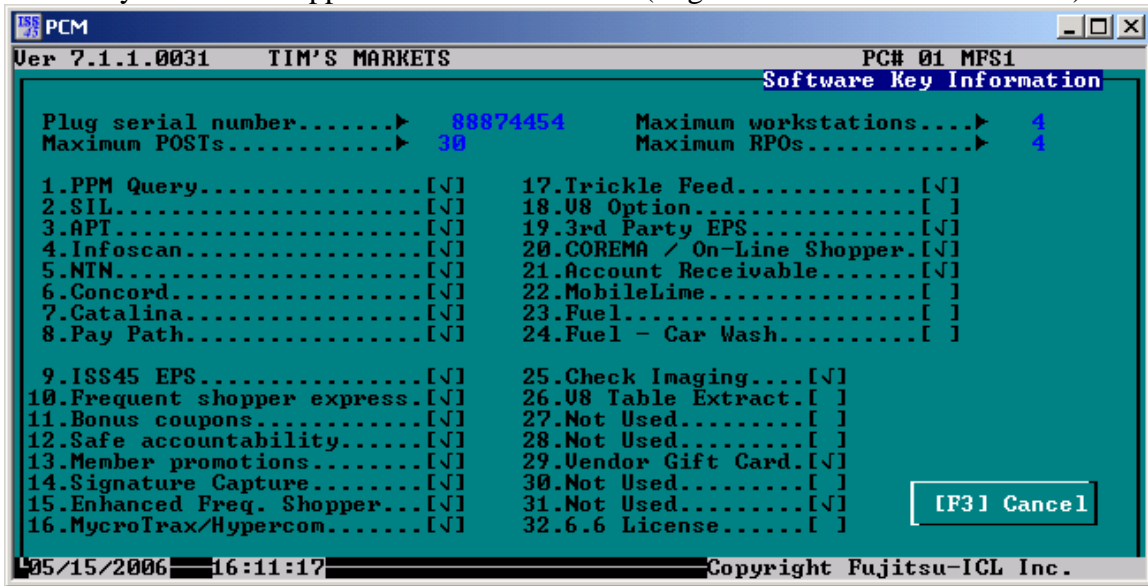
- Setup Vendor Gift Card in Gift Card Options
 - **Check** Gift Card in system
 - Add Department Range ... From **400** To **400**
 - Add Card value ... From **1.00** To **500.00**



- Note: Check “Gift Card Activation After Tender” to delay activation until the end of the order. This parameter unchecked will cause gift cards to be activated at time of sale.
- Open Software Key Information
 - 6 - System Maintenance & Utilities
 - 1 - System Parameters
 - 12 - Software Key Information



- Verify the HASP supports Vendor Gift Cards (flag 29 must be set on the HASP)



- Open payment processor.



o Login to payment processor.

The screenshot shows the WinEPS Viewer application window. At the top, it displays the "WINEPS by MTXEPS" logo, the date "Today is Jan 13", the version "Version 816.1.0", and system status: "WinEPS Engine Up", "Lanes Up", and "DEM Host Up". Below this is an "Info Messages" section with a scrollable list of system events. A "Trouble Messages" section is also present. A "Login" dialog box is open in the center, titled "EPS Logon Start at 05:55", with fields for "User Name:" and "Password:" and a "Login" button. The Windows taskbar at the bottom shows the Start button, a taskbar with "Start" and "EPS" buttons, and a system tray with various icons and the time "05:55".

WinEPS Viewer

WINEPS
by **MTXEPS**

Today is Jan 13
Julian day 2006013
Version 816.1.0

WinEPS Engine Up
Lanes Up
DEM Host Up

Info Messages:

```
01/12 11:00:15 PM Close-End-Of-Period COMPLETED
01/12 11:00:15 PM Shutting Down WinEps Engine
01/13 03:05:12 AM Lanes Stopping...
01/13 03:05:12 AM Lanes Stopped
01/13 03:05:17 AM Shutting Down WinEps Engine
01/13 05:30:00 AM Automatic ReStart Initiated
01/13 05:30:09 AM Lanes Started
01/13 05:55:36 AM Connected to WinEps Engine
```

EPS Logon Start at 05:55

Welcome to WinEPS, Please Login.

User Name:

Password:

Login

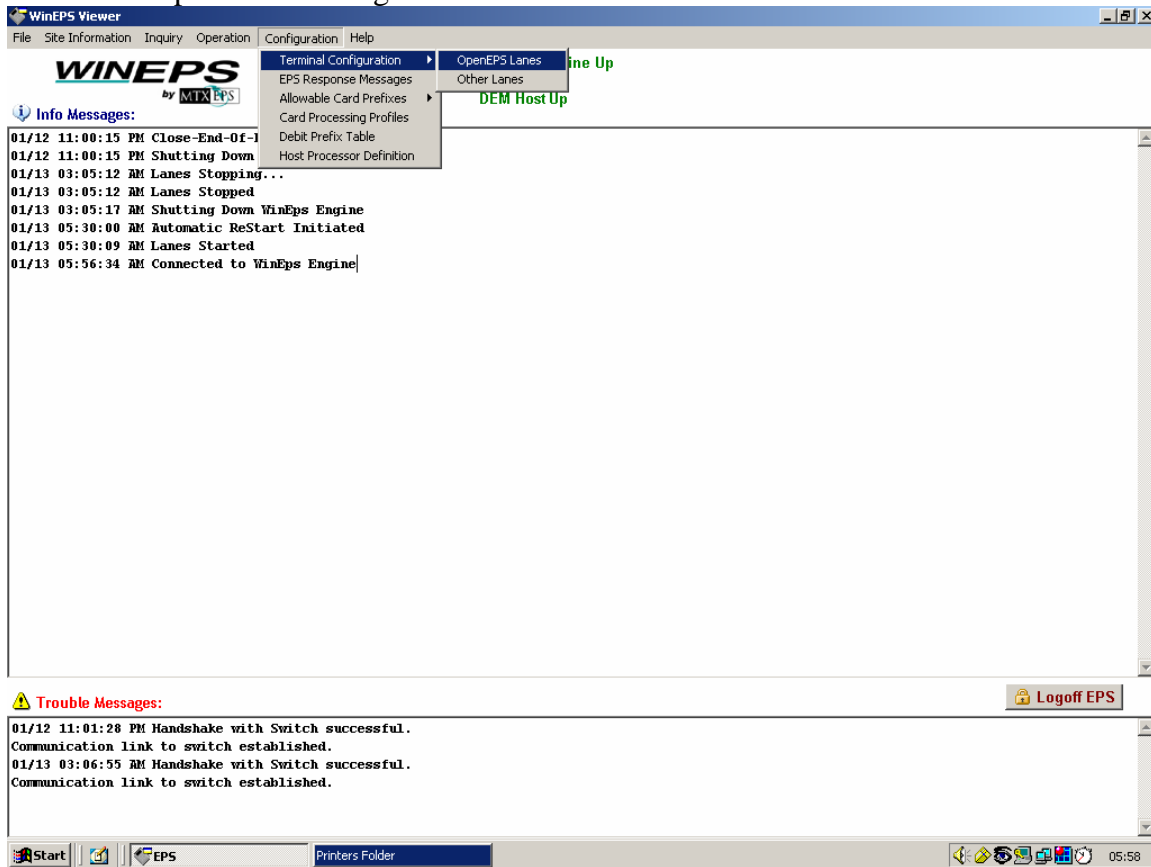
Trouble Messages:

```
01/12 11:01:28 PM Handshake with Switch successful.
Communication link to switch established.
01/13 03:06:55 AM Handshake with Switch successful.
Communication link to switch established.
```

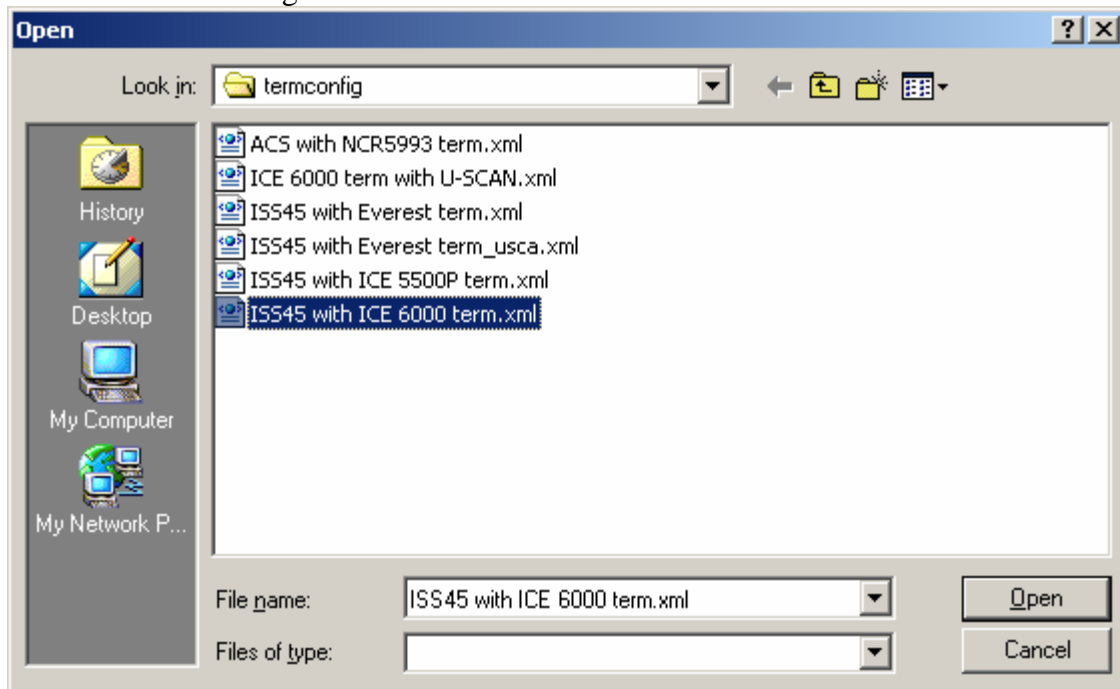
Start | EPS

05:55

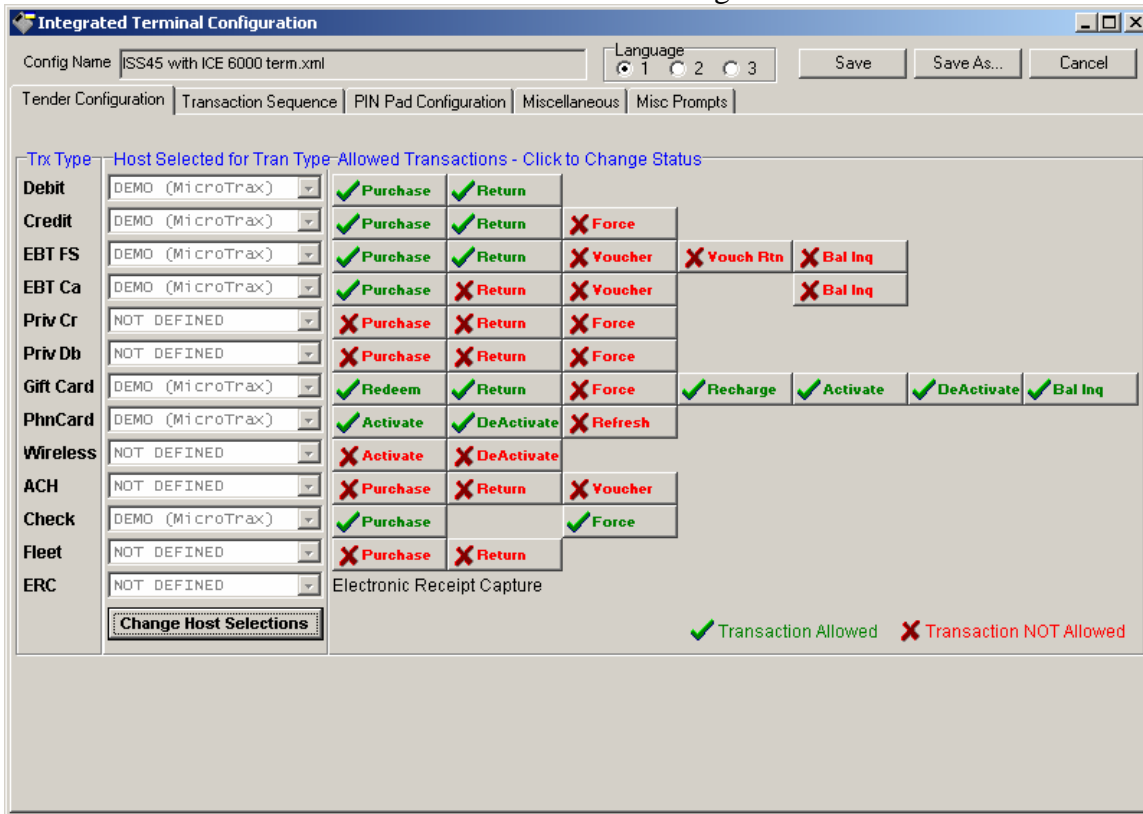
o Open Lane Configuration.



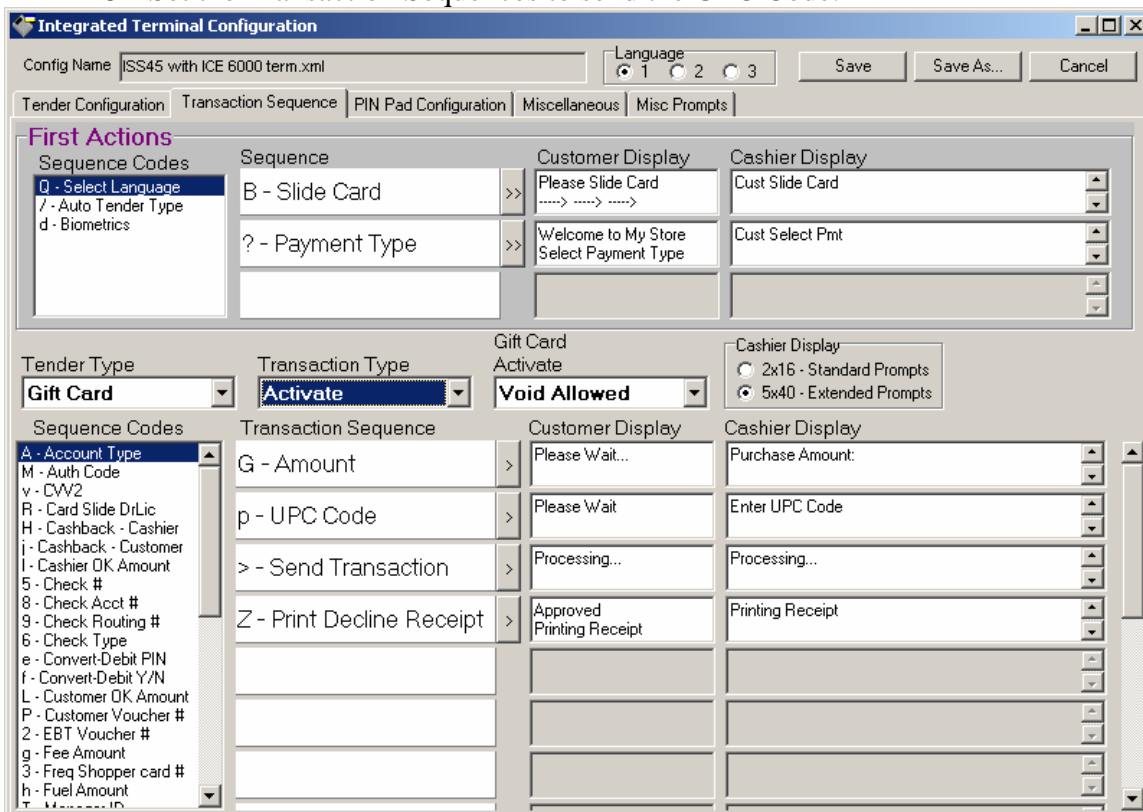
o Choose configuration file.



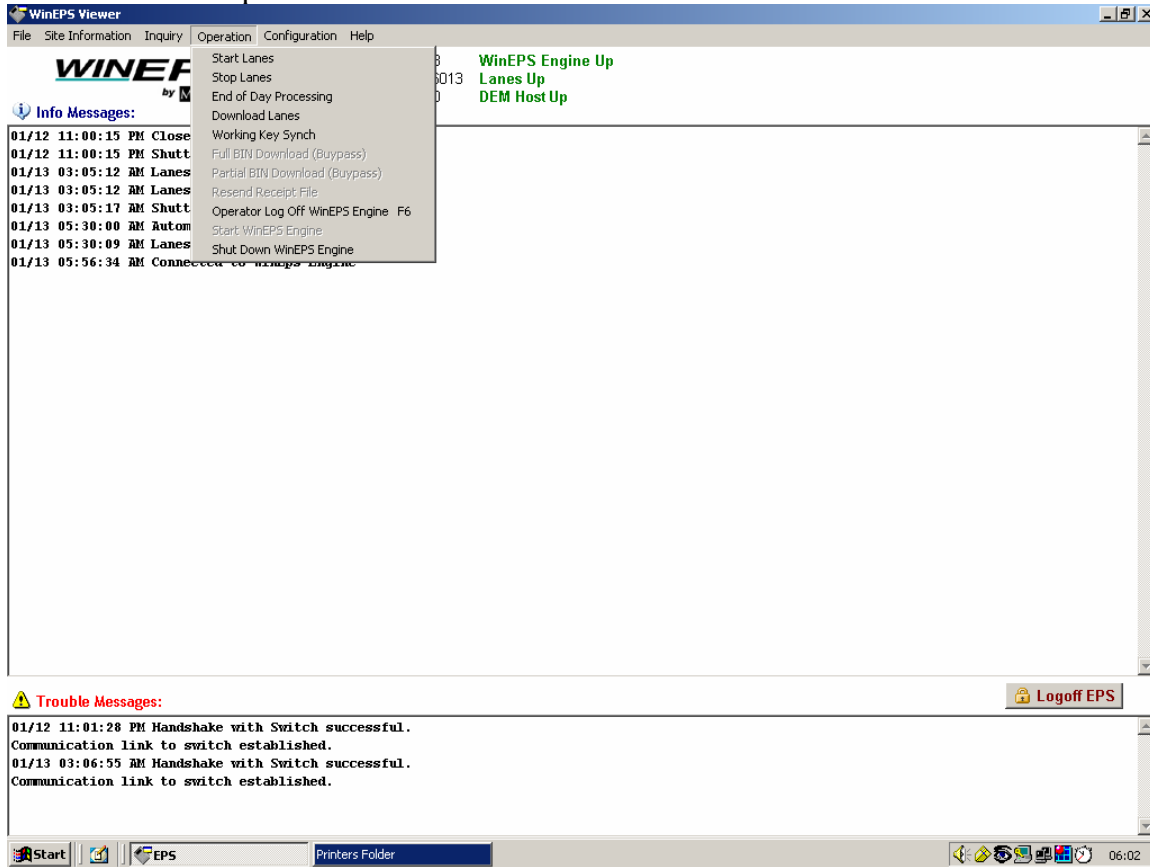
- o Allow Gift Card Activation in Tender Configuration.



- o Set the Transaction Sequences to send the UPC Code.



- Save the Terminal Configuration
- Stop Lanes.



- Start Lanes.