

## Technical Bulletin

### ISS45 With Mixed S-Class Slice and NCR Peripherals

ISS45-TECH-05:41  
November 17, 2005

The attached document from Larry Lack documents the setup of an S-Class TeamPoS terminal with several legacy NCR peripherals. This mix/match combination allows dealers to install updated slices while retaining some or all of the older peripherals for operating an ISS45 system.

Besides the attached document, you will want the TeamPoS 2000 S-Class Installation Guide (see the Hardware Manuals Page). Also, NCR publishes a document (BST0-2121-74 1.pdf) that you likely have that includes the programming labels for the legacy NCR scanner hardware. StoreNext does not distribute this particular document.

The following peripherals were configured for this exercise. You may be able to add other peripherals based upon your own knowledge:

- NCR 68 Key PS2 Keyboard (5932-2000-M006)
- NCR 7875 RS-232 single cable Scanner/Scale (7875 Model 2000)
- NCR 7158 printer with power brick (7158-1015-9001) Note: the power brick is required for the printer and a gender changer is needed for Com port 4 on the TeamPoS 2000 S-class.
- NCR cash drawer connected to the printer (2189-6052-M139)
- CRT monitor (in this case branded IBM)

The TeamPoS 2000 S-Class has an available COM port for a payment terminal. Connecting and interfacing the payment terminal was not included in this exercise.

This document and information are supplied to StoreNext Retail Technologies personnel and third parties to assist them in doing business with StoreNext. They are not to be used or distributed for any other purpose.

StoreNext Retail Technologies LLC endeavors to ensure that the information in this document is correct and fairly stated, but does not accept liability for any error or omission.

## 0. Setup for TeamPOS 2000 S-Class and NCR Peripherals

- 0.1. COM port 4 configuration on the TeamPOS 2000 S-class for use with a standard RS232 peripheral
  - 0.1.1. Open the top cover on the TeamPOS 2000 S-class to gain access to jumpers JP1601 and JP1602
  - 0.1.2. Set the jumpers to the settings in the following diagram

COM4  
JP1601    JP1602

1 2 3  
4 5 6  
7 8 9

JP1601    JP1602

COM4			
JP1601	1-2	RI	9
	2-3	GND	9
	4-5	DTR	4
	5-6	+24V	4
	7-8	CTS	8
	8-9	DSR	8
JP1602	1-2	RTS	7
	2-3	DTR	7
	4-5	DSR	6
	5-6	+5V	6
	7-8	DCD	1
	8-9	GND	1

- 0.1.3. Use a gender changer to change the COM4 female connector to a male connector
- 0.2. NCR 7875 Scanner/Scale single cable RS-232 setup to work with ISS45
    - 0.2.1. Scan the NCR programming tags in the following sequence
      - Default
      - Program Mode
      - 1-0-5  
(Communication Protocol setup for RS-232)
      - 2-0-5-1-0-5  
(9600,Even,1 stop bit,7 bit character, RTS high wait for CTS)
      - 2-1-1-0-1

(BCC enabled, interface control none, Check digit UPC-A enable, EAN-8 enable, EAN-13 enable, UPC-E disable)

- 2-2-1-0-2  
(Prefix Byte enable, ASCII code 02)
- 2-3-1-0-3  
(Terminator Byte enable, ASCII code 03)
- Save and Reset

### 0.3. NCR 7156 Printer

#### 0.3.1. Dip switch setting

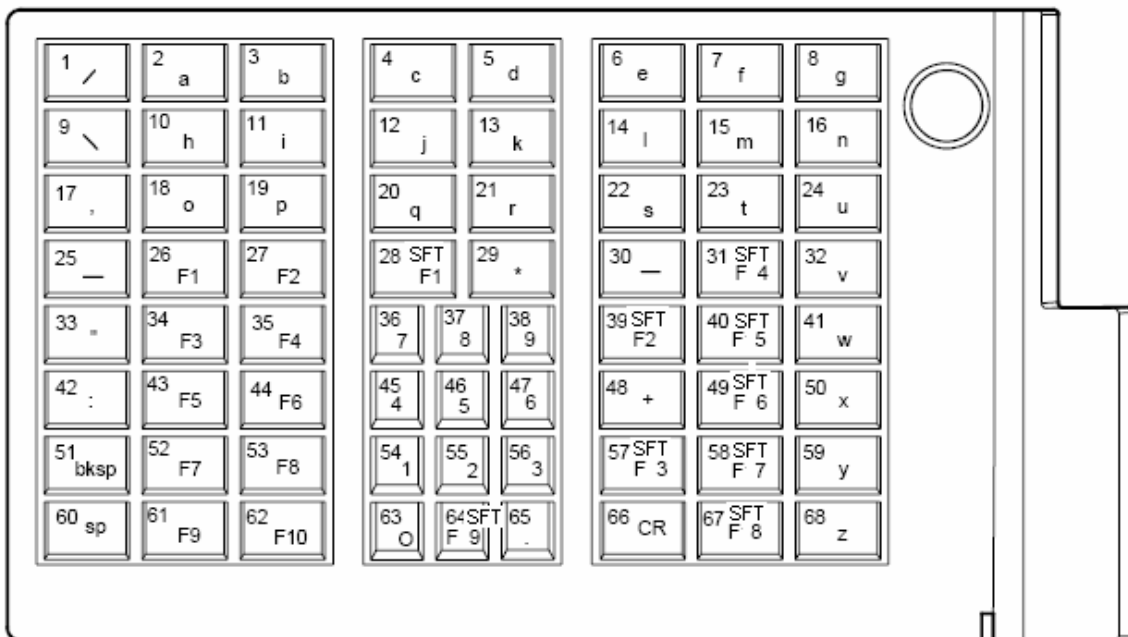
- 1 off
- 2 off
- 3 off
- 4 off
- 5 on
- 6 off
- 7 off
- 8 on

### 0.4. NCR 7158 Printer

#### 0.4.1. Configure the setup for 9600 baud, 8 data bits, 1 stop bit, parity none, flow control DTR/DSR

### 0.5. NCR 68 Key Keyboard

#### 0.5.1. The following is a keyboard map for the 68 keyboard which can be used to define the keys in the ISS45 keyboard program



#### 0.5.2. Clarification of some hard to read keys above

- 17 , (comma)

- 25 \_ (underscore)
- 30 – (dash)
- 33 " (double quote)
- 42 : (colon)
- 65 . (period)

## 1. Peripheral Connection on the TeamPOS 2000 S-Class

- 1.1. NCR 68 Key Keyboard
  - 1.1.1. Connected to the PS2 connection
- 1.2. NCR 758 Printer with external power brick
  - 1.2.1. Connected to the COM1 connection
- 1.3. NCR Cash Drawer
  - 1.3.1. Connected to the Printer
- 1.4. NCR 7875 Scanner/Scale
  - 1.4.1. Connected to the COM4 connection using a gender changer
- 1.5. Future component (possibly a payment terminal)
  - 1.5.1. Connected to the COM2 connection

**Note: The above connections were used for the setup and testing for a particular customer. Devices can be connected in a different sequence than above if defined in the ISS45 configuration screen**

## 2. TeamPoS 2000 S-Class installation

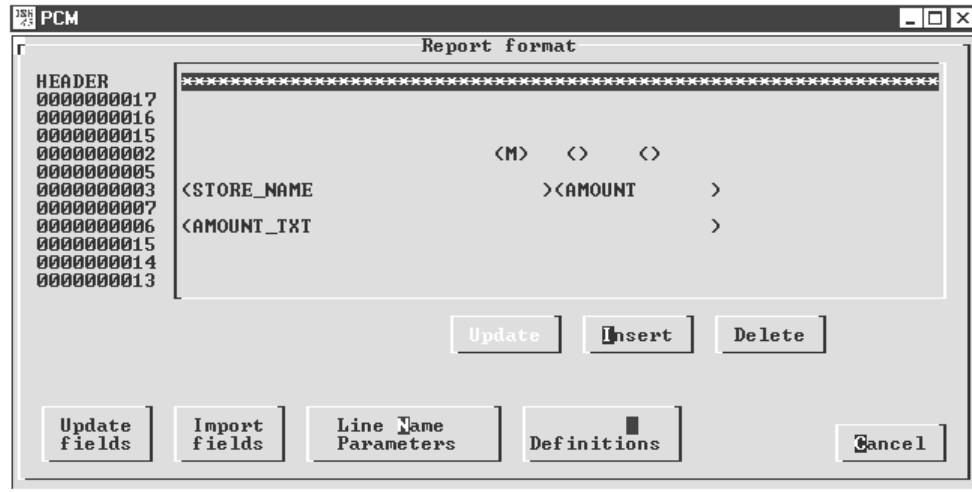
- 2.1. Use the Fujitsu TeamPoS 2000 S-Class Installation Guide for ISS45 to continue the TeamPoS setup and ISS45 installation

## 3. Note on WinPOS.ini file after ISS45 load

- 3.1. During installation on previous versions of ISS45 software, when choosing FullScreen format the installation resulted in the WinPOS.ini file writing the line Colors=256. This needs to be changed to Colors=Max or you will get a gray screen showing offline once the cold start is finished

## 4. Sample Check Printing and Endorsing Templates for the 758 printer

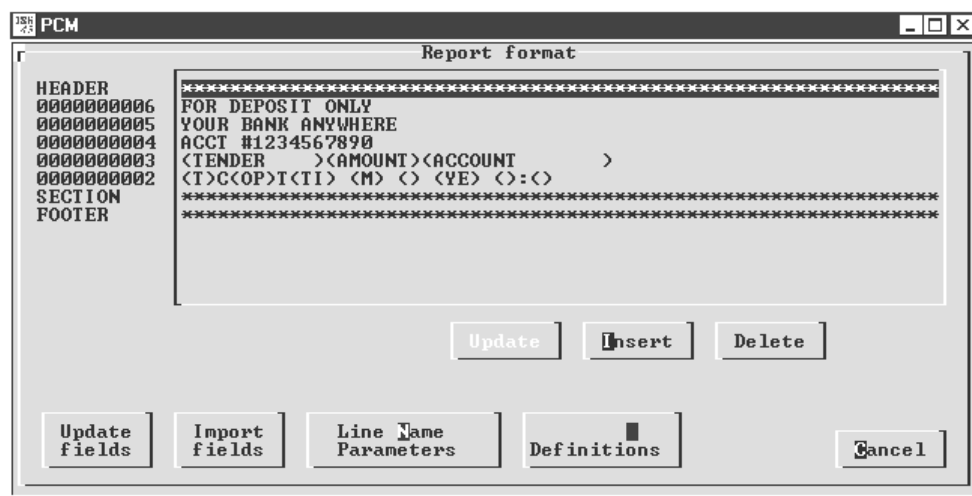
- 4.1. Check printing template example for 758 printer



**Note:** The following X, X represents Column position, Field size

- 3 BLANK LINES
- MONTH\_DESC 27,3 DAY 33,2 YEAR 39,2
- 1 BLANK LINE
- STORE\_NAME 1,31 AMOUNT 32,14
- 1 BLANK LINE
- AMOUNT\_TXT 1,45
- 7 BLANK LINES

4.2. Check endorsing template example for 758 printer



**Note:** The following X, X represents Column position, Field size

- FOR DEPOSIT ONLY 40,X
- YOUR BANK ANYWHERE 40,X

ACCT #1234567890 40,X  
TENDER 40,12 AMOUNT\_END 52,8 ACCOUNT 60,16  
TERMINAL 40,3 C 43,1 OPERATOR 44,4 T 48,1 TICKET\_NO 49,4  
MONTH\_DESC 54,3 DAY 58,2 YEAR 61,4 HOUR 66,2 : 68,1 MINUTE 69,2