

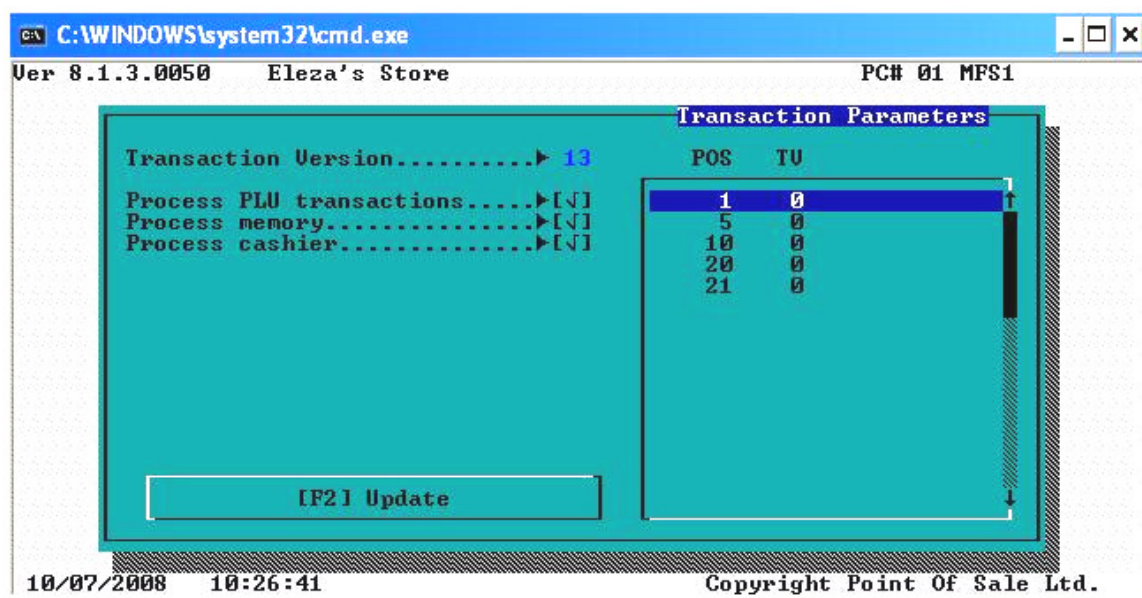
Technical Bulletin

ISS45 – V8 Transaction Version Number Change

ISS45-TECH-08:11
October 7, 2008

As of the release of ISS45 version 8.1.3.0-050 and forward, the “Transaction Version” number is no longer updated. This change was part of adding the new support for additional T-Log information in this release.

You will no longer see changes to the right hand column of numbers under the “TV” label when you view the Transaction Handling Parameters (System Administration | Technical Support | Transaction Handling Parameters).



The three (3) parameters with check boxes above tell the system how to handle the terminals during the End-Of-Day if they are off-line. If you do not check these options, any available data for the current day will be lost from any terminal that does not communicate with the servers when the End-Of-Day is run.

Process PLU transactions: Check this if you want PLU movement data updated

Process Memory: Check this if you want to print on-line report with the current day's data

Process Cashier: Check this if you want to keep cashier totals in the system. Any amounts that appear over on today's data will be short the next day and vice versa.

This document and information are supplied to StoreNext Retail Technologies personnel and third parties to assist them in doing business with StoreNext. They are not to be used or distributed for any other purpose.

StoreNext Retail Technologies LLC endeavors to ensure that the information in this document is correct and fairly stated, but does not accept liability for any error or omission.

