

## Technical Bulletin

### ISS45 V7: IBM-3035 Grocery Keyboard with 2x20 LCD

ISS45-TECH-11:15

October 26, 2011

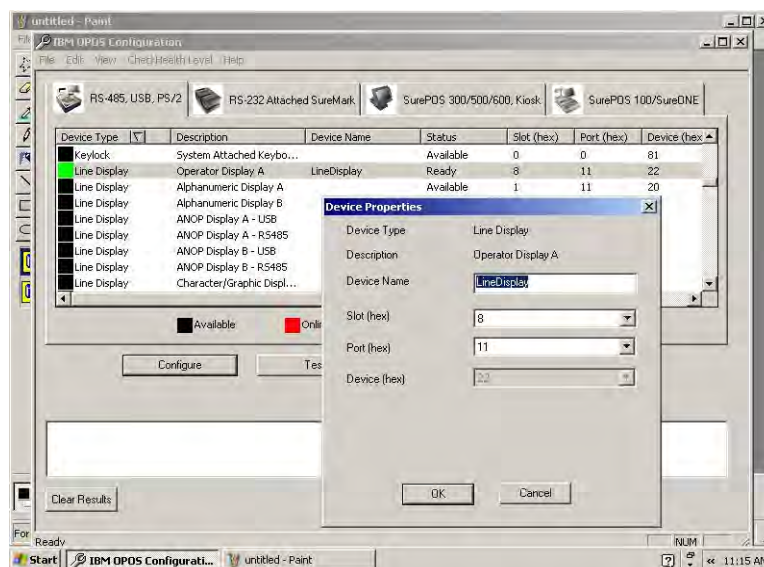
#### BACKGROUND

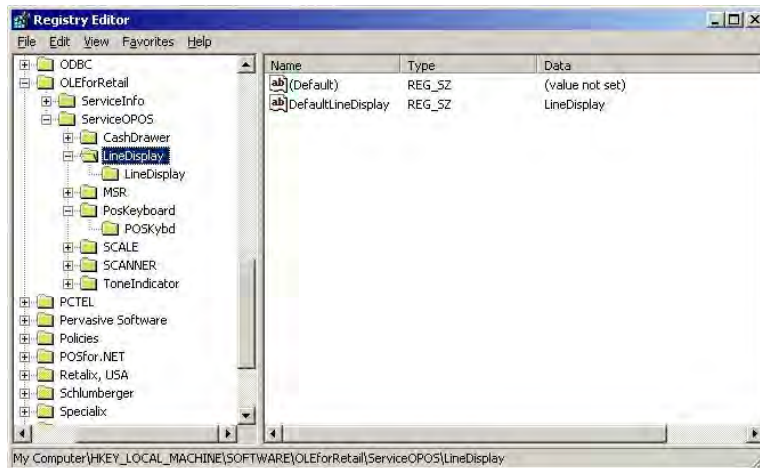
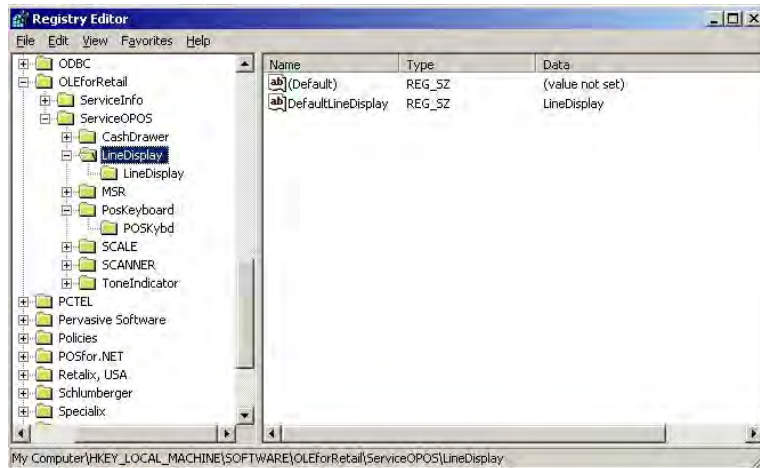
IBM has released a new 50-key grocery keyboard that includes a 2x20 operator display. The IBM keyboard is known as IBM-3035 (also labeled as IBM Part# 65Y4679, Model M8). Below is the setup for ISS45 V7. This additional setup will be required in addition to following the IBM keyboard setup instructions in the installation manual.

#### CONFIGURATION

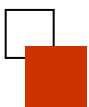
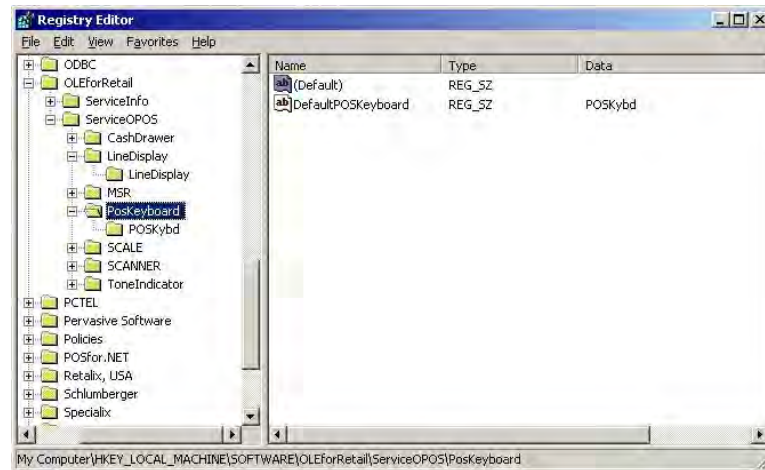
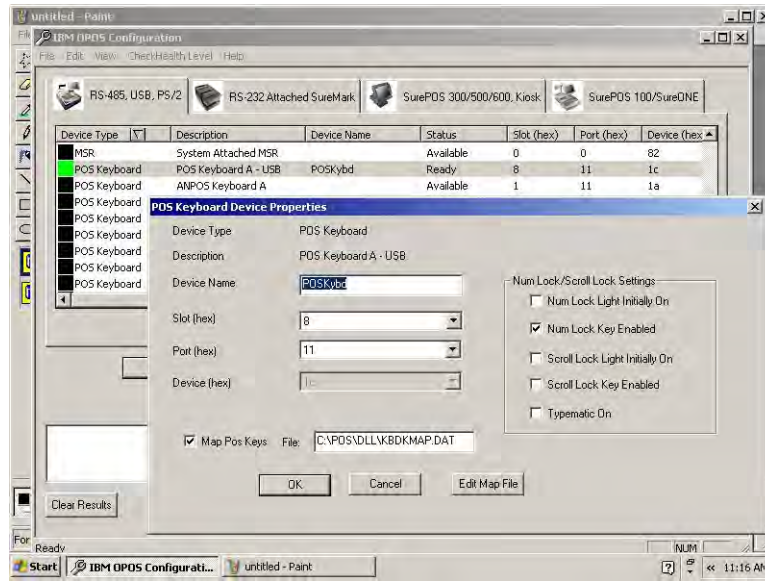
##### IBM UPOS configuration and resulting registry entries:

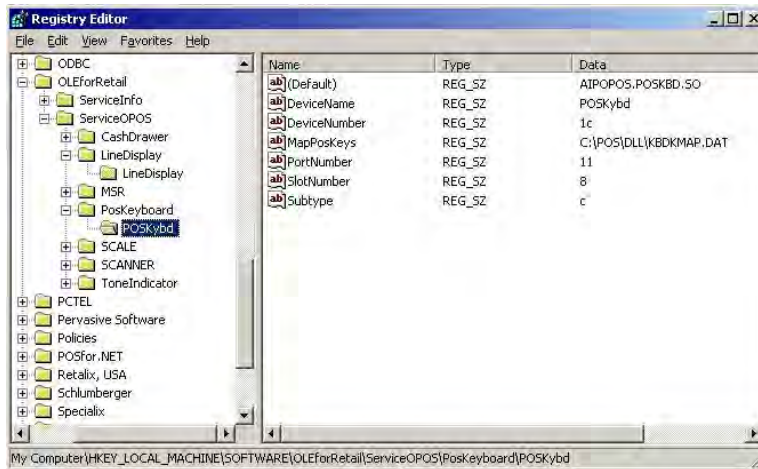
##### Line Display





# POS Keyboard -





On the POS:

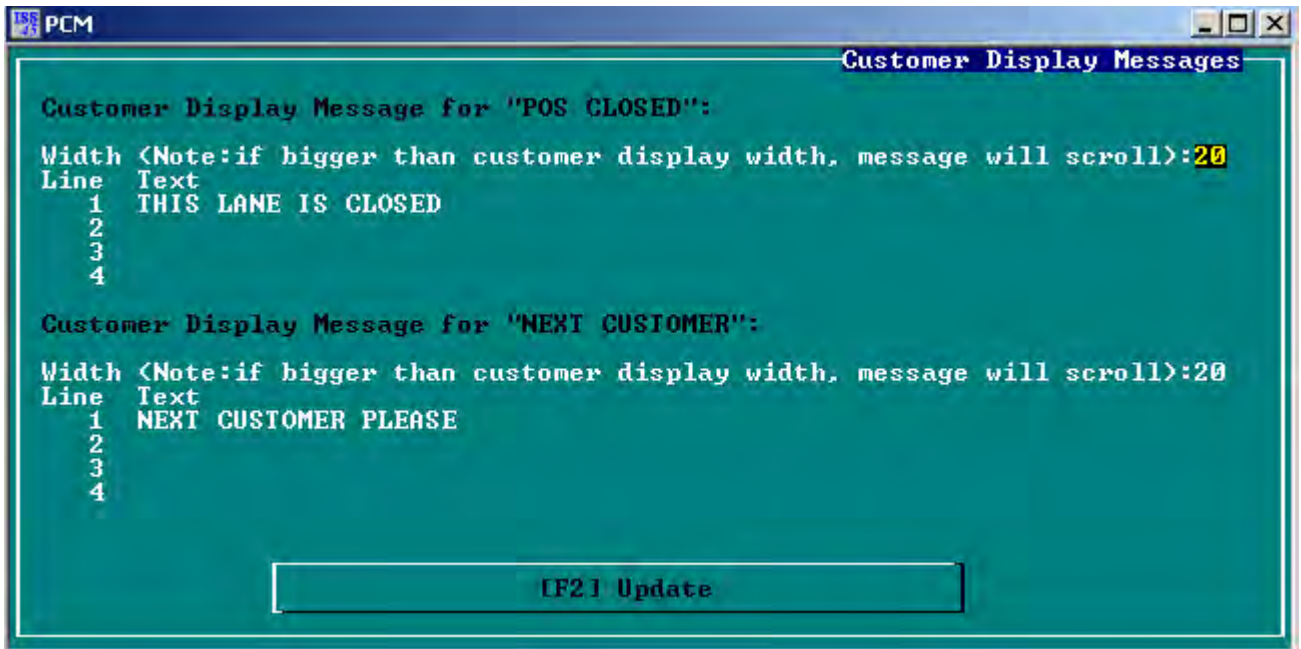
In order to make the V7 POS run with the IBM 50-Key Keyboard you need to make no special changes in the POS Configuration, but you need to setup your OPOS Keyboard and OPOS Line Display by adding the following lines to the winpos.ini (Capitalization is important!):

```
OposKeyBoard=Yes
OposLineDisplay=Yes
DefaultLineDisplayName=LineDisplay
DefaultKeyBoardName=PosKybd
```

The OPOS device names for the Keyboard and Line Display are “LineDisplay” and “PosKybd”.

There is a screen in POST Parameters (Option #6-1-3-5) called “Customer Display Messages” that allows you to configure the text that displays when the POS is signed off and between sales:





Your keyboard and 2 x 20 should now be functional with ISS45 V7.

