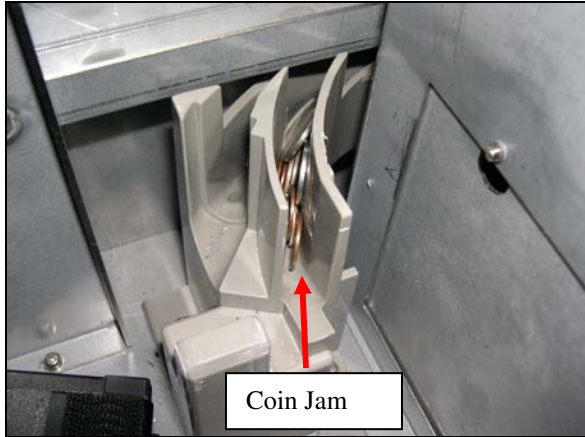


Subject: Genesis Coin Dispenser Coin Jams

Issue:

There have been some reports that the T-Flex Coin Dispenser is experiencing a high rate of coin jams as the coins exit the dispenser and start into the chute. During rigorous testing it was found that when the U-Scan unit is not leveled properly, the number of coin jams increased significantly.



Solution:

To minimize the possibility of coin jams on U-Scan, the base unit must be leveled properly.

Tools Needed:

- Small Level
- 1/4" Hex/Allen Wrench

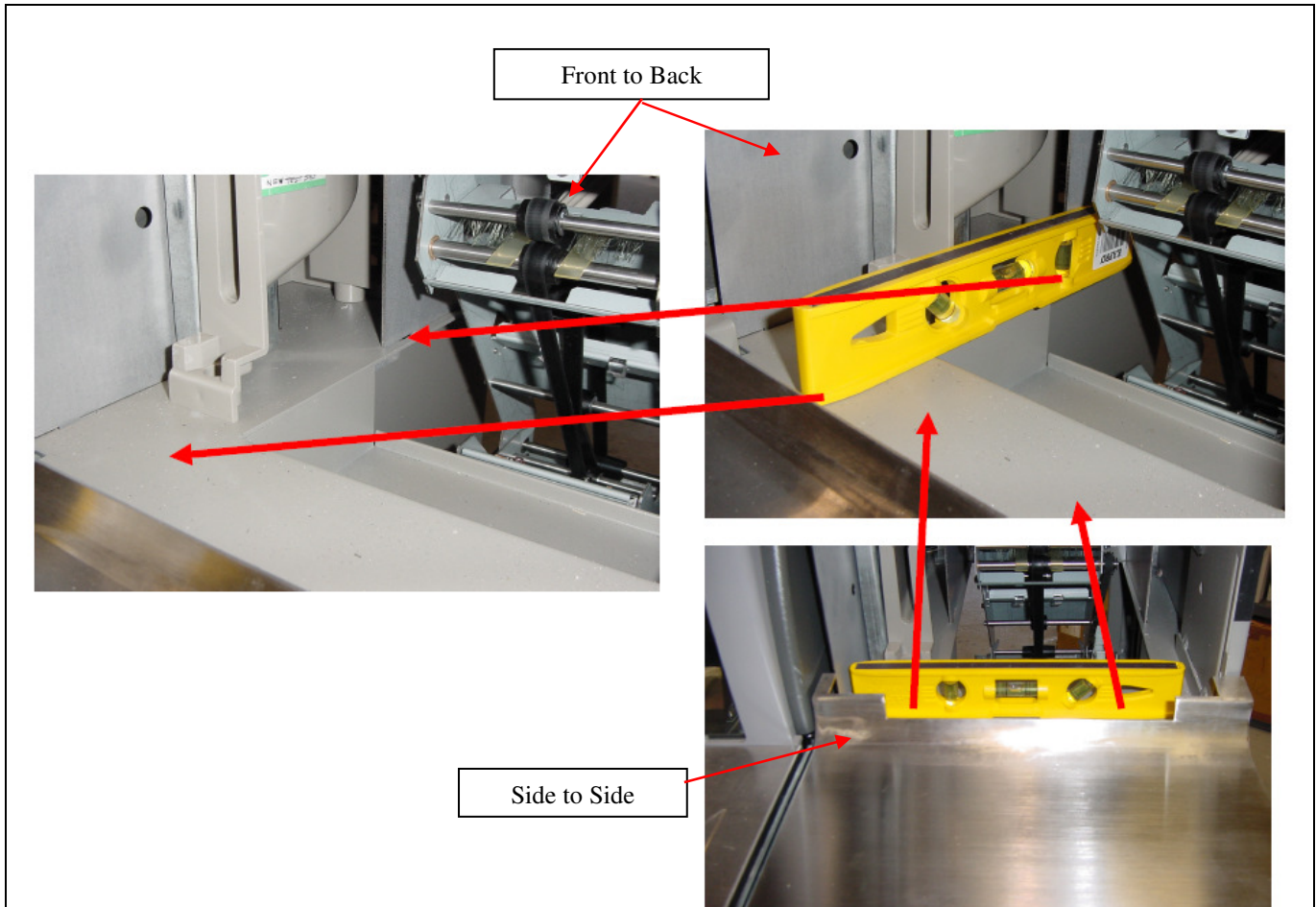


<u>INQUIRIES TO:</u>		DATE
Fujitsu Transaction Solutions Inc.		
Exchange:	Sustaining Engineering	_____
Mail:	Fujitsu USA04, Sustaining Engineering	_____
FAX:	858-731-4781 (7888-4781)	_____
Internet:	SustainingEngineering@ftxs.fujitsu.com	_____
FTP:	ftp://ftp.ftxs.fujitsu.com/	_____
	Author	_____
Original signature copies maintained by Sustaining Engineering.		

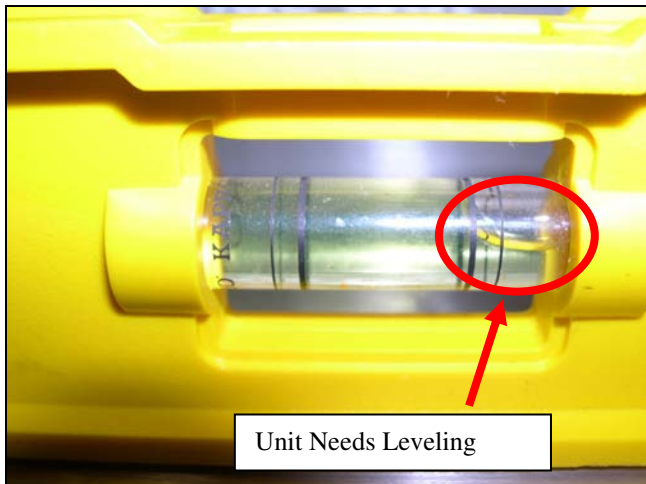
STEP 1

Determine if the U-Scan unit is leveled correctly.

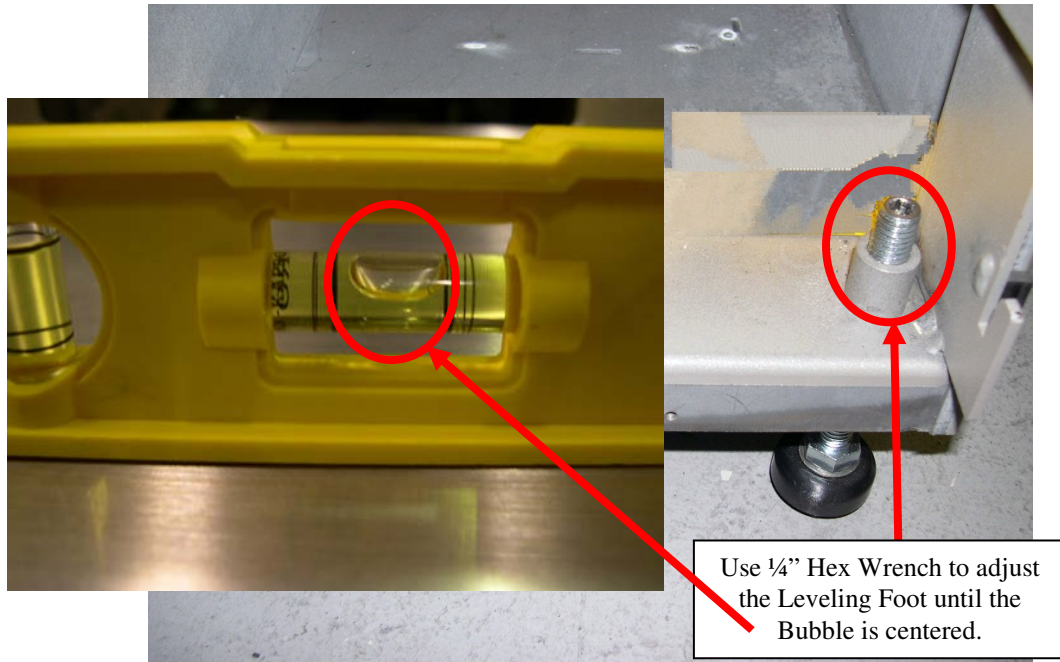
1. Use a small level and place it on shelf surface that supports the **lower coin exit chute**. Also check level from Front to Back. See picture Illustrations below.



2. Check the level reading. The Bubble needs to be centered, anything farther out of level than shown below can cause a coin jam.



3. To Level the unit adjust the leveling Feet as needed using a leveler as a guide. Leveler should be put in the recommended area described in the beginning of this document. See illustration below.



4. Verify all 4 U-Scan feet are securely on the floor, the unit will not rock or move.
5. Add 2 drops of Loctite to the threads of each leveling foot.
6. Done.