

Subject: Genesis Canister Coin Dispenser Jams and New Chute Adaptor

Overview

There have been many reports of Coin Jams in the Canister configuration of the Genesis U-Scan. The underlying cause was a change to the plastics of the Telequip Canister unit, which then caused interference with and a extra large gap in the Coin Chute design.

To correct this condition there have been 2 changes; 1) The Plastic Chute has been modified, and 2) A new Stainless Steel Coin Chute Adaptor has been designed.

New Part Number	Description	Old Part Number
11003024	T-Flex Coin Dispenser, w/ SS Chute Adaptor, Left	11002901
11003043	Genesis Coin Chute, Left	11001436
11003044	Genesis Coin Chute, Right	11002005
11003025	Chute Adaptor Kit, Left	N/A
11003026	Chute Adaptor Kit, Right	N/A

All units built after November, 2008 will have these new parts for the Canister configuration. For Hopper configuration, which is not affected, the existing Chute will continue to be used until stock is depleted, then it will also change to the new part. For field replacement, only the New part is needed for either configuration.

A field upgrade program has been developed for North America (parts will be provided Europe, Australia, and indirect customers) – pending availability of production quantity of parts. Installation time is approx. 15 minutes per lane. Field upgrade kits are:

Part Number	Description
11001202F	Telequip T-Flex Chute Upgrade, Left
11001202F2	Telequip T-Flex Chute Upgrade, Right

These field kits (and Chute Adaptor Kits above, also include an appropriate Telequip End Cap that will not likely be needed in the field, but is included to simplify kit generation.

New Coin Chute Adaptor (Left Shown):

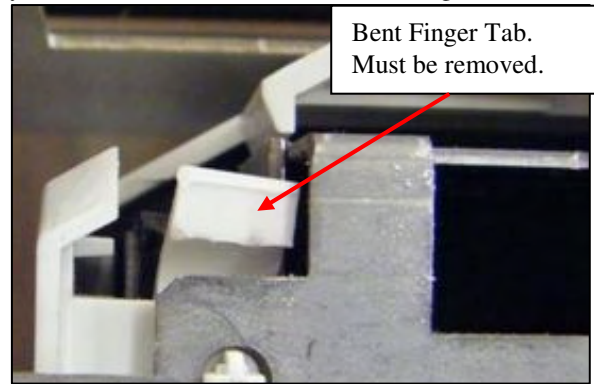
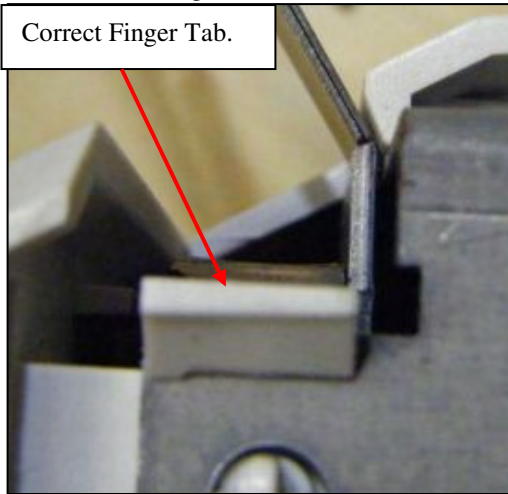


INQUIRIES TO:		DATE
Fujitsu Transaction Solutions Inc.		
Exchange:	Sustaining Engineering	_____
Mail:	Fujitsu USA04, Sustaining Engineering	_____
FAX:	858-731-4781 (7888-4781)	_____
Internet:	SustainingEngineering@us.fujitsu.com	_____
FTP:	ftp://ftp.ftxs.fujitsu.com/	_____
	Sustaining Engineering	
	Product Manager	
	Author	
Original signature copies maintained by Sustaining Engineering.		

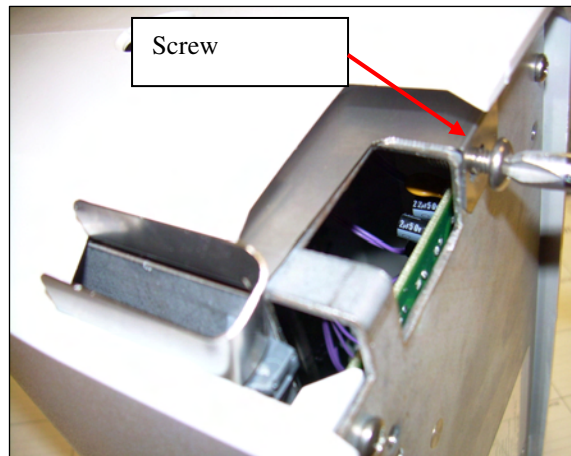
Upgrade Instructions

To modify an existing Canister Type Genesis unit, follow the installation instructions below.

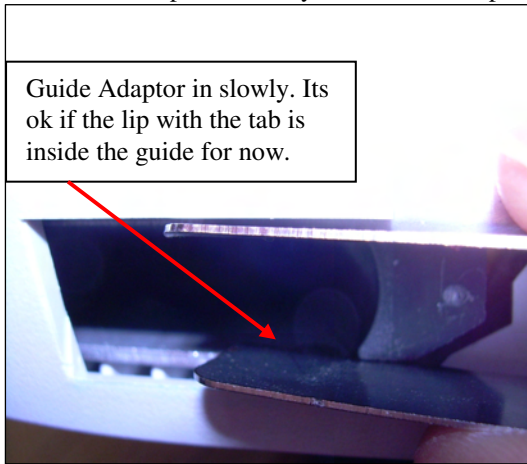
1. Remove the Coin Canister Tray from the Telequip unit.
2. Remove the Telequip and Metal Protective Cover Plate from the Genesis.
 - o Remove the 2 Mounting Screws.
 - o Remove the Cover Plate.
 - o Lift the Telequip and supporting Sheetmetal Tray from the Genesis.
 - o Unplug both the DC power plug and USB Interface cable from the Telequip.
 - o Set it aside momentarily.
3. Remove and replace the Coin Chute.
 - o 3 Mounting screws, 1 in front and 2 below where the Telequip was installed.
 - o Install the New Chute in the same location, be sure to line up locating pins in alignment holes.
4. Turn the Telequip Unit upside down and remove the 4 screws that secure it to the Sheetmetal Tray.
5. Inspect the 'Finger Tab' that secures the Plastic Telequip housing to the Metal Base.
 - o If the Finger Tab is bent or does not securely hold to the Metal Base, Cut off the Finger Tab.



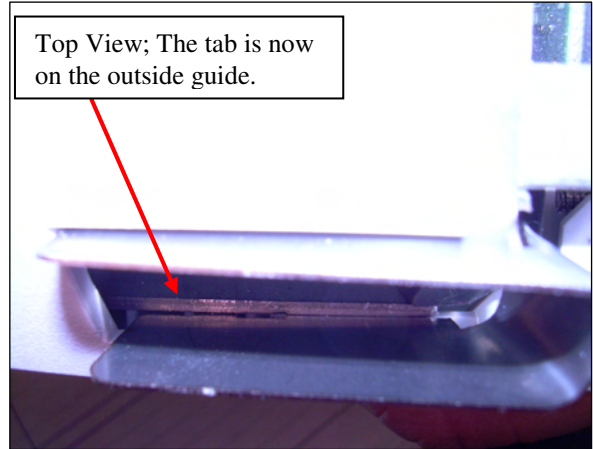
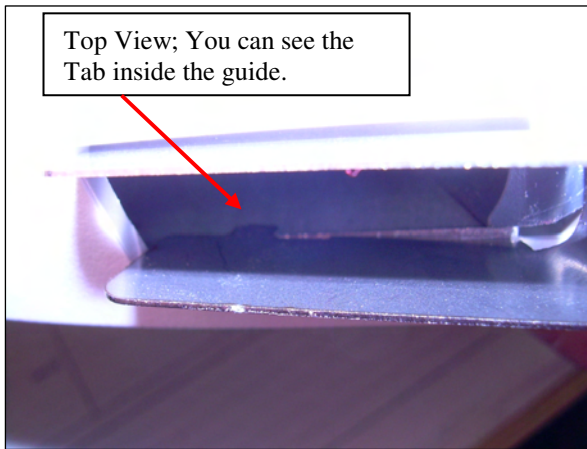
6. Remove the Mounting Screw from the base of the Telequip.



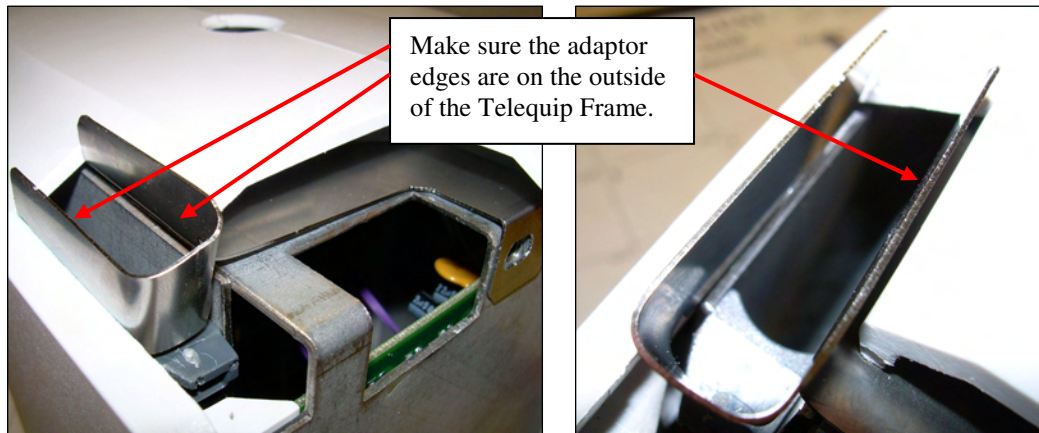
- 7. Install the Stainless Steel Coin Chute Adaptor onto the Telequip.
 - o Guide the adaptor carefully, should slide in pretty easy.



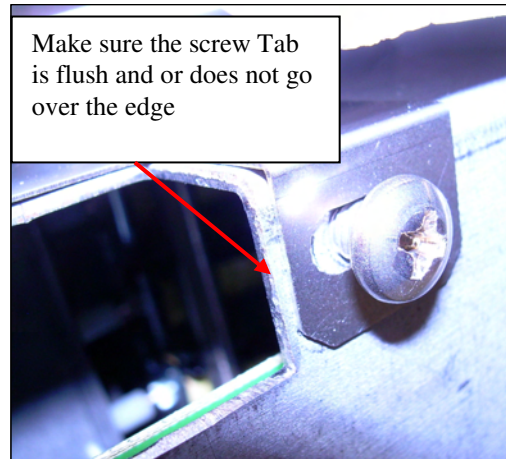
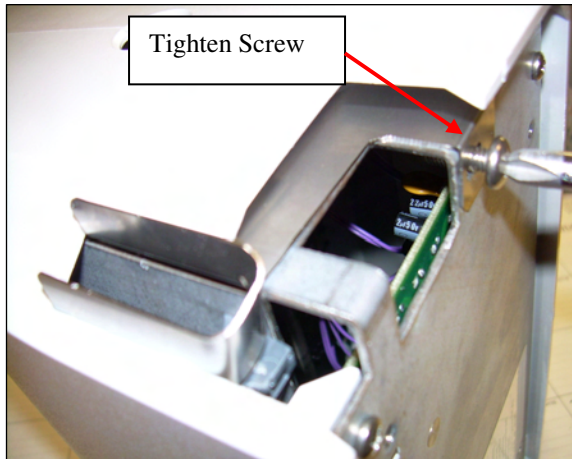
- o Once the Adaptor is position, push up and out to put the tab over the Telequip metal case into the notch in the Telequip plastic case.



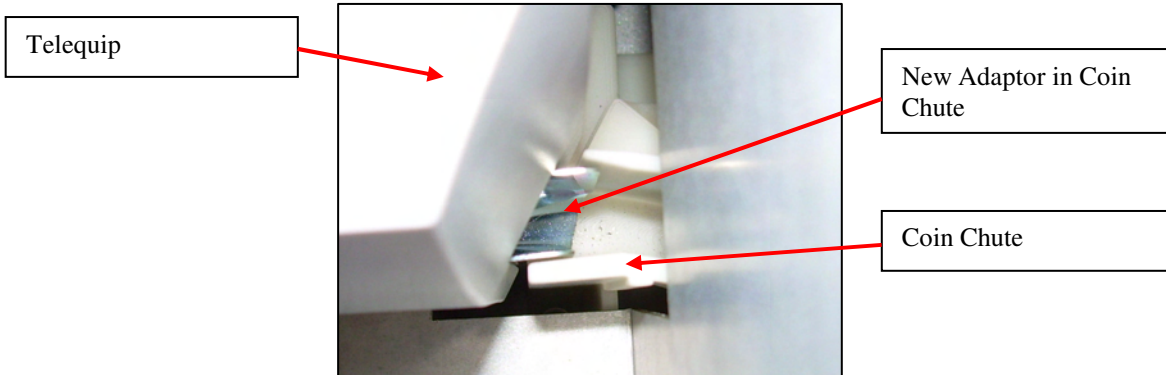
- o Verify both parts of the Coin Chute Adaptor are outside the Telequip metal chassis.



- Once the adaptor is installed correctly, tighten the screw to secure the adaptor.



8. Reinstall the Telequip into the Sheetmetal Tray.
 - Secure all 4 mounting Screws.
9. Reconnect the DC Power and USB Interface Connector.
 - Verify DC Power Switch is ON and the LEDs are ON.
10. Reinstall the Telequip into the Genesis.
11. Make sure the Coin Chute Adaptor aligns into the Coin Chute.



12. Secure the Telequip into Genesis.
 - Install Cover Plate
 - Secure with 2 screws previously removed.
 13. Perform, or have store personnel perform a test dispense to verify proper operation.
- Done.**