



**Subject: iPad100-20 ROM Version E9 and WPA2**

**Overview**

A new version of the iPad100-20 ROM has been released and implemented that will support WPA2 security.

Any iPad100-20 that has a ROM version below E9US, needs to be upgraded to this version upon return for repair or when Staged prior to shipment. All new units are shipping from the Manufacturer with ROM version E9US installed.

This ROM version is not field updateable, therefore this PSB will have limited distribution. Focus on Integration, Repair and National Tech Support only.

**ROM Versions**

There are 2 version of iPad100-20 ROM that should be loaded, based on which Main Board is installed. The Main Board difference is due to various components being obsolete and being replaced by components that required a ROM software change.

All boards with KD20074-B60X, can use ROM version E9US even if that board is installed into an older iPad unit. All previous boards (KD20051-B30X) should have ROM version A8US/E8US installed.

iPAD Revision	Main Board	ROM Version	Comment
B6 or Below	KD20051-B30X	A8US/E8US	Will not accept E9US Reference PSB-08-074
B7 or Above	KD20074-B60X	E9US	
C1 or Above	KD20074-B60X	E9US	Factory Installed

This firmware can be downloaded from the FTP site below. The files also contain installation instructions. Caution: These are large files and should not be downloaded across a slow connection.

Site: <ftp.ftxs.fujitsu.com>  
Path: pos/possustaining/Mobile/iPAD100-20/  
File: iPad-20\_ROM\_E9US.zip

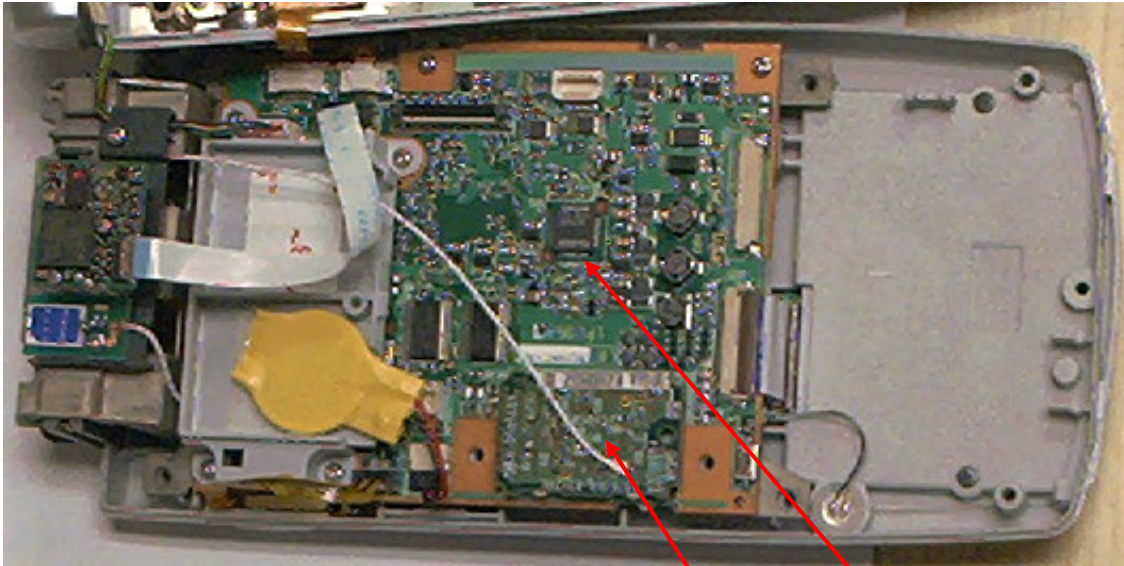
**Impact**

- iPad100-20 at revision B7 or Higher:
  - With ROM version E9US installed – No Action Needed
  - With ROM version E8US or below installed – Upgrade to ROM version E9US
- iPad100-20 at revision B6 or Lower:
  - With ROM version A8US/E8US installed – No Action Needed
  - With ROM version A8US or below – Upgrade to ROM version E8US (reference PSB-08-074)
- Main Board KD20074-B60X being installed into any iPad100-20
  - Verify ROM version E9US is installed
- Main Board KD20051-B30X being installed into any iPad100-20
  - Verify ROM version A8US/E8US is installed (reference PSB-08-074)

<u>INQUIRIES TO:</u>		DATE
Fujitsu Frontech NA		
Exchange: Sustaining Engineering	Sustaining Engineering	
Mail: Fujitsu USA20, Sustaining Engineering		
FAX: (949) 458-6257	Product Manager	
Internet: <a href="mailto:SustainingEngineering@us.fujitsu.com">SustainingEngineering@us.fujitsu.com</a>		
FTP: <a href="ftp://ftp.ftxs.fujitsu.com/">ftp://ftp.ftxs.fujitsu.com/</a>	Author	
Original signature copies maintained by Sustaining Engineering.		

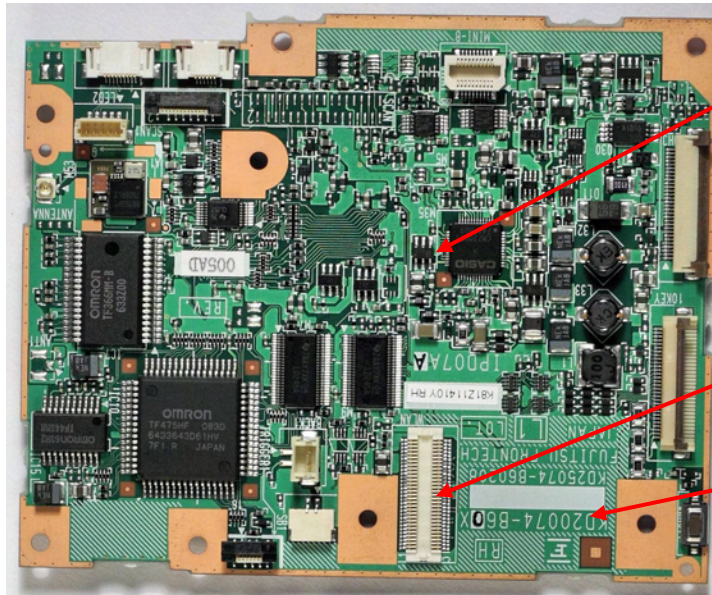
### Main Board Identification

The Spare Part number for the Main Board did not change (CA06178-D510) due to these component changes only the revision level. However the PCB Assembly part number did change and can be identified when the iPad100-20 is opened for repair. This number is located on the board, under the Radio Card.



iPAD100-20 with Rear Cover Removed

Radio Card  
Main Board



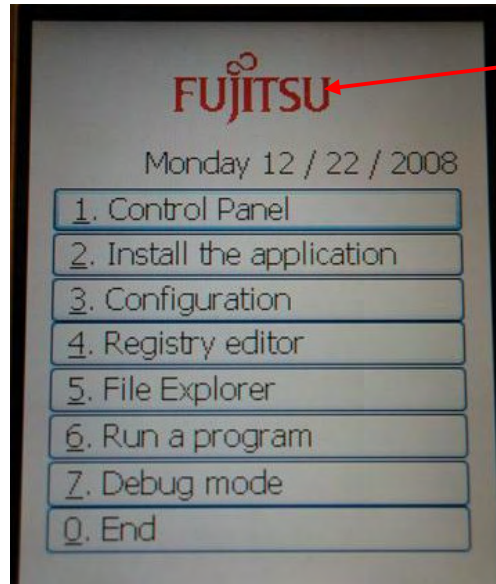
iPAD100-20 Main Board

Radio Card Connector & Location  
Main Board Assembly Number

## ROM Version Identification

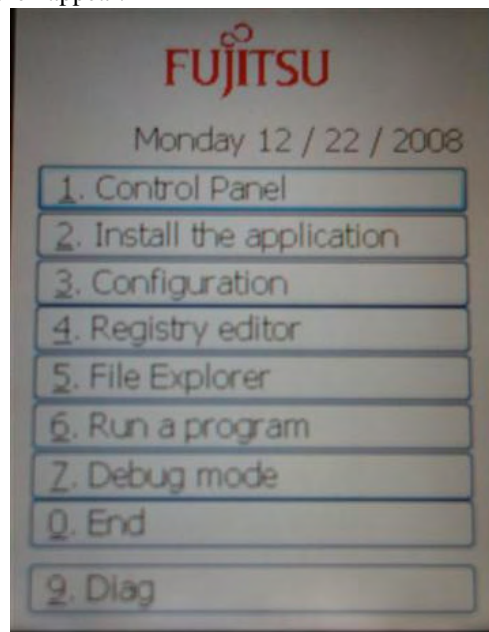
The ROM version can be verified from the DIAG menu.

- Turn the iPad on.
- When the iPad is powered on, push and release the RESET switch that is located back side of unit while pressing [SFT] and [CAN] keys.
- Keep pressing [SFT] and [CAN] keys until the following tool menu is displayed, then release.
- After the tool menu is displayed, Tap and Hold on the Fujitsu logo for 5 seconds.

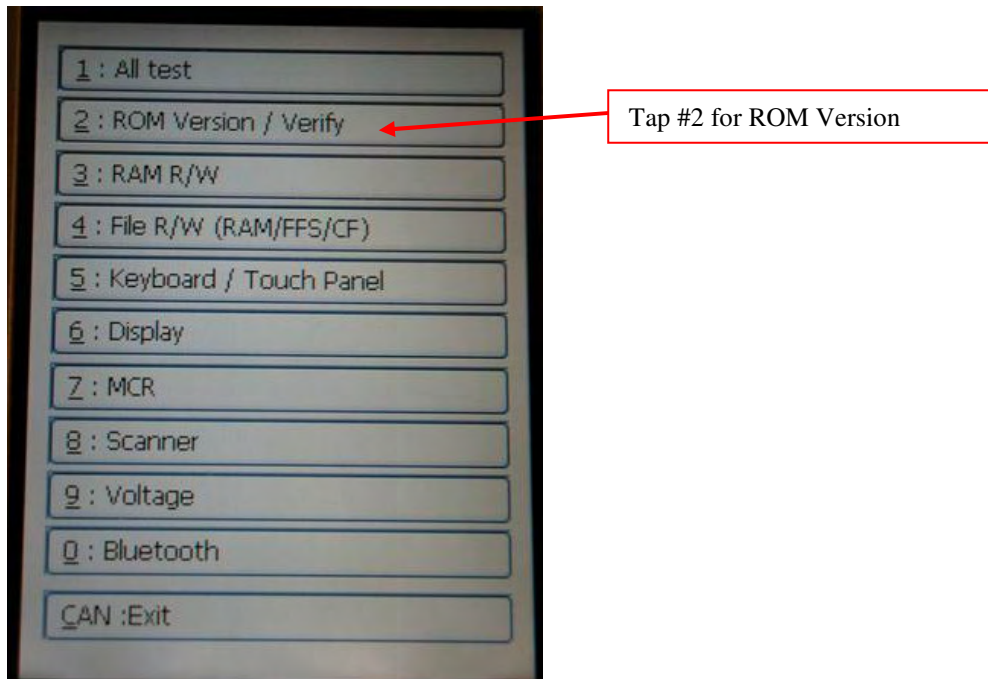


Tap & Hold for 5 Seconds for  
DIAG menu

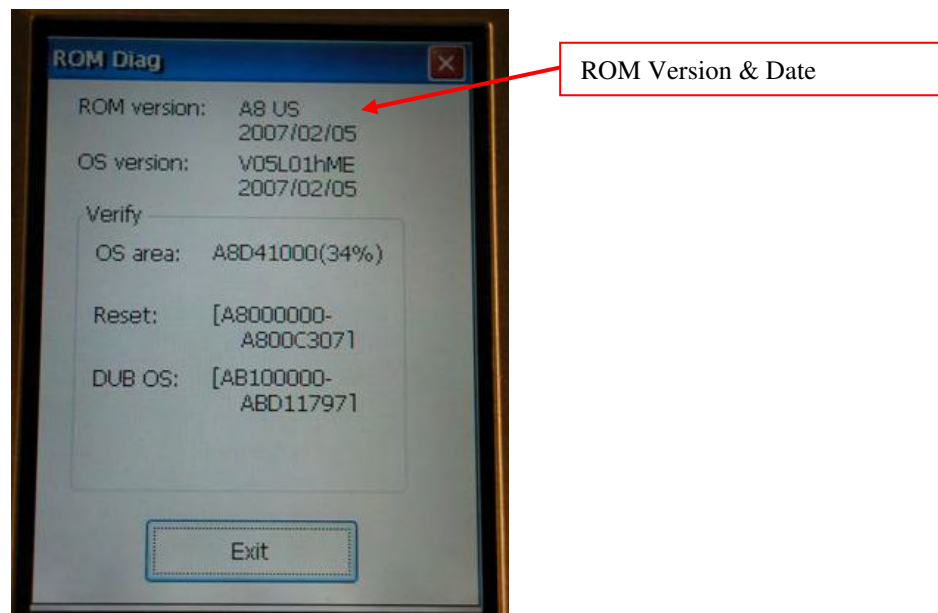
- Menu option 9 will then appear.



- Tap Menu Option 9 (**9 - Diag**) to show the Diagnostic menu options.



- Tap Menu Option 2 (**2 – ROM Version / Verify**) to show the ROM version installed.



### ROM Installation Instructions

To ensure there is enough power to perform the entire operation, the unit should be in a cradle.

1. If the unit revision is below B7, and A8US/E8US is installed, do not proceed.
2. If the unit revision is B7 or above and ROM version E9US is installed, do not proceed.
3. Initialize the iPad. (Reset SFT+CAN then #3 from the Menu).
4. Unzip the three update files into the “Flashdisk” folder of the iPad via ActiveSync. The three files are:  
Version E9US  
 RomUpdate.exe  
 RomUpdate.ini  
 V05L01iME.nbo (~35MB)
5. Execute the program “RomUpdate.exe”.