

Subject: Pre-U-Scan 4.3.1 Software with TP3600 Series Computers

Short Summary

Under certain conditions for pre-U-Scan 4.3.1 software, for customers with TP3600 Series computers, three COM ports (Bill Dispenser, Coin Acceptor, Bag Scale) will have to be manually updated in Device Tester.

Detailed Information

Under the following conditions:

- U-Scan Installer supports the Genesis option
- Genesis SCO is equipped with TP3600 Series computer
- U-Scan software build is based on Product release prior to U-Scan Version 4.3.1

three COM ports will have to be manually updated. This is due to the new port configuration of the TP3600 and the new cabling introduced for it.

Note that U-Scan software based on Product release 4.3.1 or greater is able to detect the TP3600 and configure these ports automatically.

To change the COM ports in Device Tester, stop the robot software, and from Launchpad, touch the Device Tester button. Enter password 1379 and click the tabs listed in the following sections.

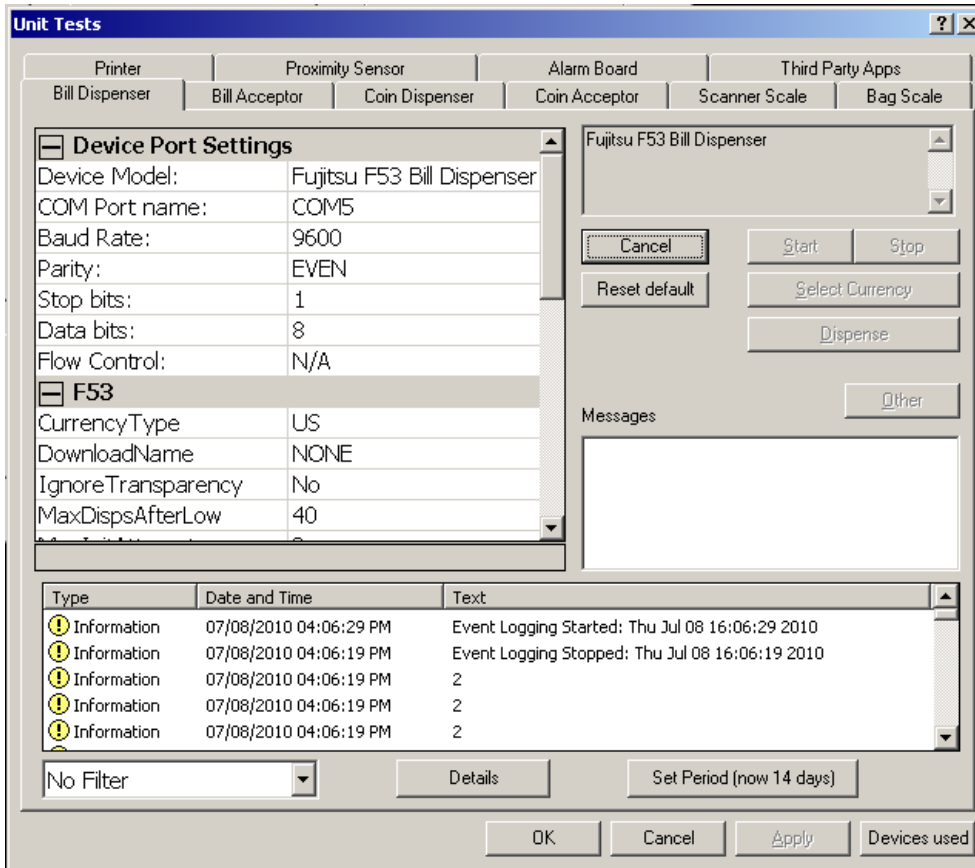
Examples

Bill Dispenser tab

The default port is COM23. For TP3600 operation in U-Scan, this should be COM5:

- Enable the **Change** button by pressing the asterisk (star) key on the physical keyboard.
- Press the **Change** button. Click the cell beside COM Port name. In the dropdown, select **COM5**.
- The **Device Tester Device Port Settings** window should appear as shown on the next page:

INQUIRIES TO:		DATE
Fujitsu Frontech North America		
Exchange: Sustaining Engineering	Sustaining Engineering	
Mail: Fujitsu USA20, Sustaining Engineering		
FAX: (949) 458-6257	Product Manager	
Internet: SustainingEngineering@us.fujitsu.com	Received via SharePoint	07/26/2010
FTP: ftp://ftp.ftxs.fujitsu.com/Pos/PosSustaining/	Author	
Original signature copies maintained by Sustaining Engineering.		



- Click Apply to apply the change for this device.

Coin Acceptor tab

The default port is COM21. For TP3600 operation in U-Scan, this should be COM3. Follow the instructions above to change the COM port setting.

Bag Scale tab

The default port is COM22. For TP3600 operation in U-Scan, this should be COM19. Follow the instructions above to change the COM port setting.

Bulletin Scope

Bulletin applies to U-Scan customers with TP3600 Series computer and pre-4.3.1 U-Scan software.

Bulletin Expiry

This bulletin no longer applies when TP3600 Series customer is upgraded to U-Scan Product version 4.3.1 or later.