

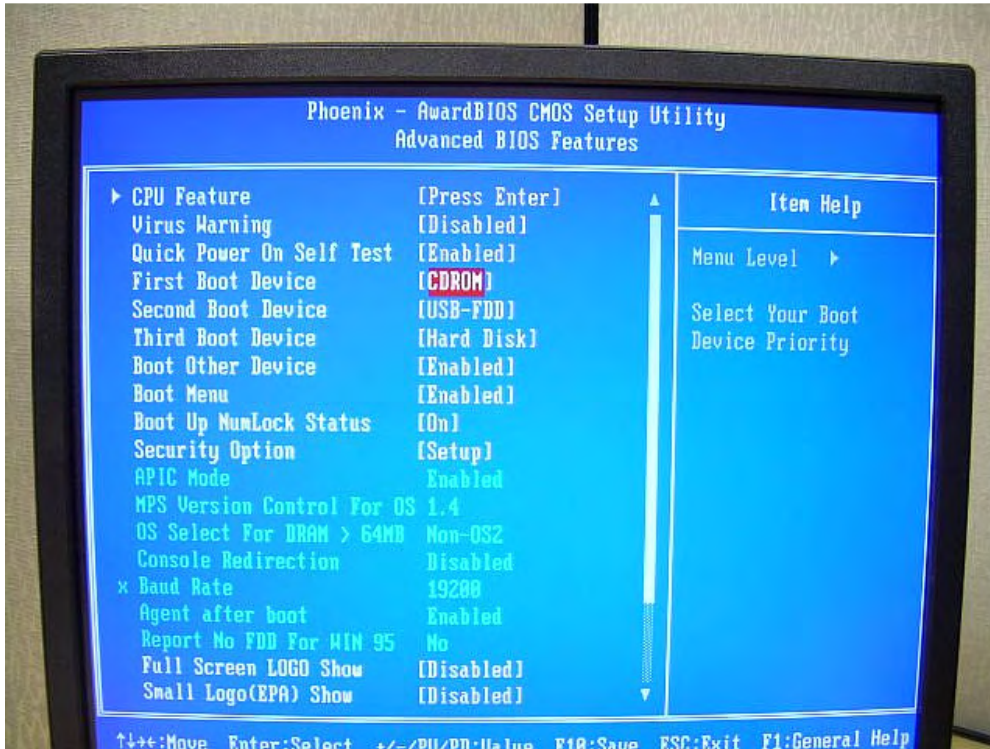
**Subject: DVD ROM on TeamPoS 36XX**

**Overview**

There has been some confusion as to the BIOS settings and the DVD ROM drive used on the TeamPoS 36XX. This bulletin is being written to clarify the settings and what needs to be done in order to boot from the DVD ROM.

**Default Settings**

Although the BIOS default settings show the first boot device to be CDROM, it must be changed to P2-DW-224S-V before the DVD drive is the first boot device. Below is a picture of the default BIOS settings for the boot devices.



**To make the DVD drive the first boot device**

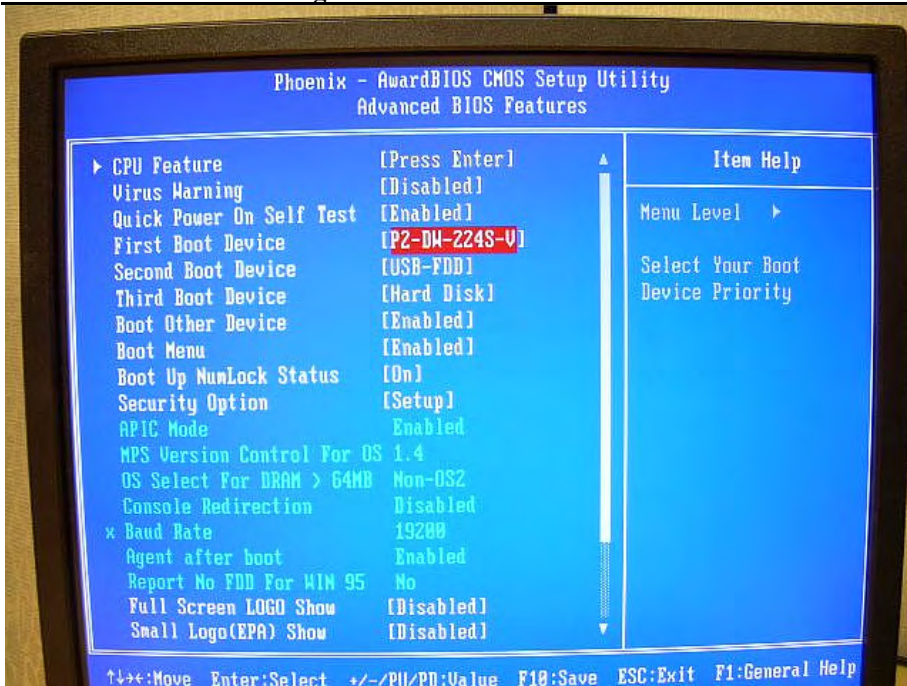
In most cases, booting from the DVD is only a one time occurrence and is done by hitting F10 during boot up and selecting P2-DW-224S-V as the first boot device (See pictures below). If there is a requirement to make the DVD the permanent first boot device, BIOS parameter changes are required and they must be saved. This can easily be done by selecting P2-DW-224S-V as the first boot device and save settings, see BIOS screens on the following page.

INQUIRIES TO:		DATE
Fujitsu Frontech North America		
Exchange: Sustaining Engineering	Sustaining Engineering	
Mail: Fujitsu USA20, Sustaining Engineering		
FAX: (949) 458-6257	Product Manager	
Internet: <a href="mailto:SustainingEngineering@us.fujitsu.com">SustainingEngineering@us.fujitsu.com</a>		
FTP: <a href="ftp://ftp.ftxs.fujitsu.com/Pos/PosSustaining/">ftp://ftp.ftxs.fujitsu.com/Pos/PosSustaining/</a>	Author	
Original signature copies maintained by Sustaining Engineering.		

**Selecting the SATA DVD drive when “F10” is pressed during the boot process**



**Screen shot of BIOS changed to boot from SATA drive in Advanced BIOS Features**



Note: Restoring all defaults will result in this BIOS setting changing back to CDROM

**Impact**

- Production
  - N/A
- Installed Units
  - N/A.
- Repair Center: N/A
- Service Spares: N/A