

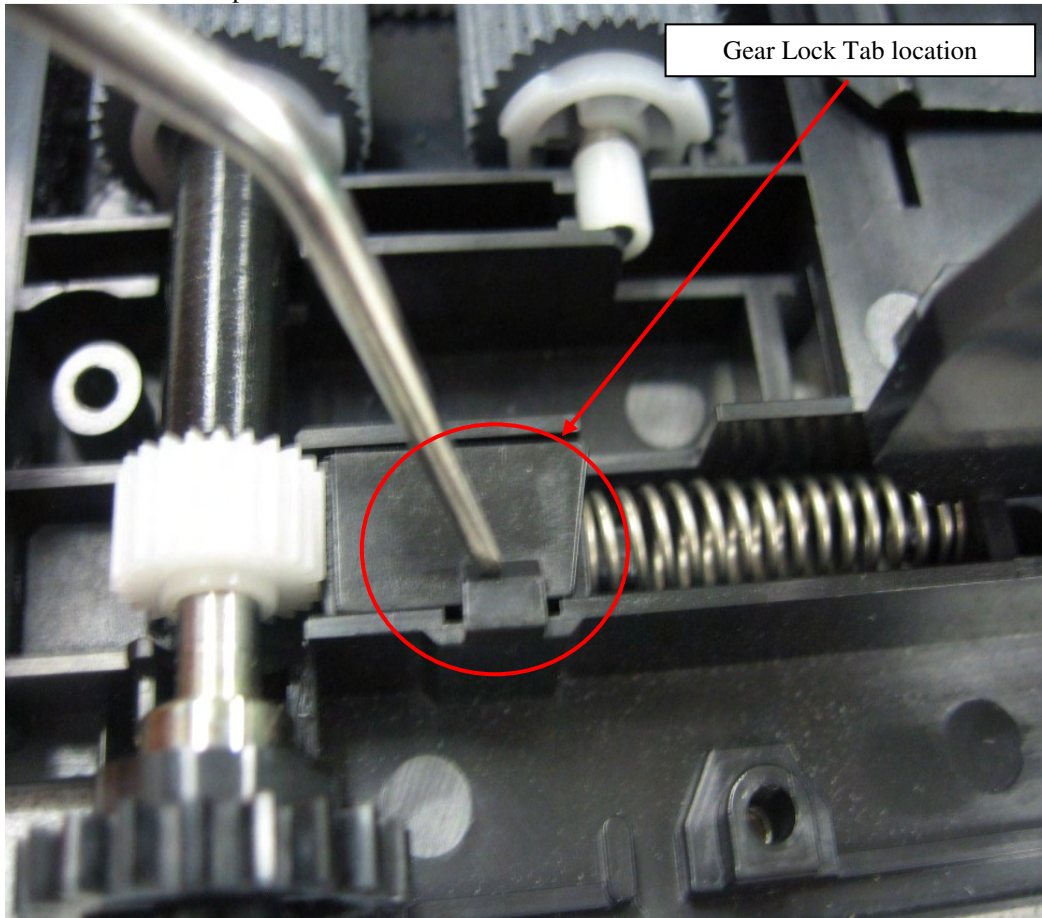
Subject: F53 Cassette Gear Lock Tab

Overview

In the ongoing efforts to improve the product quality, Fujitsu has released an improvement to the durability of the F53 Cassette Gear Lock Tab.


Problem

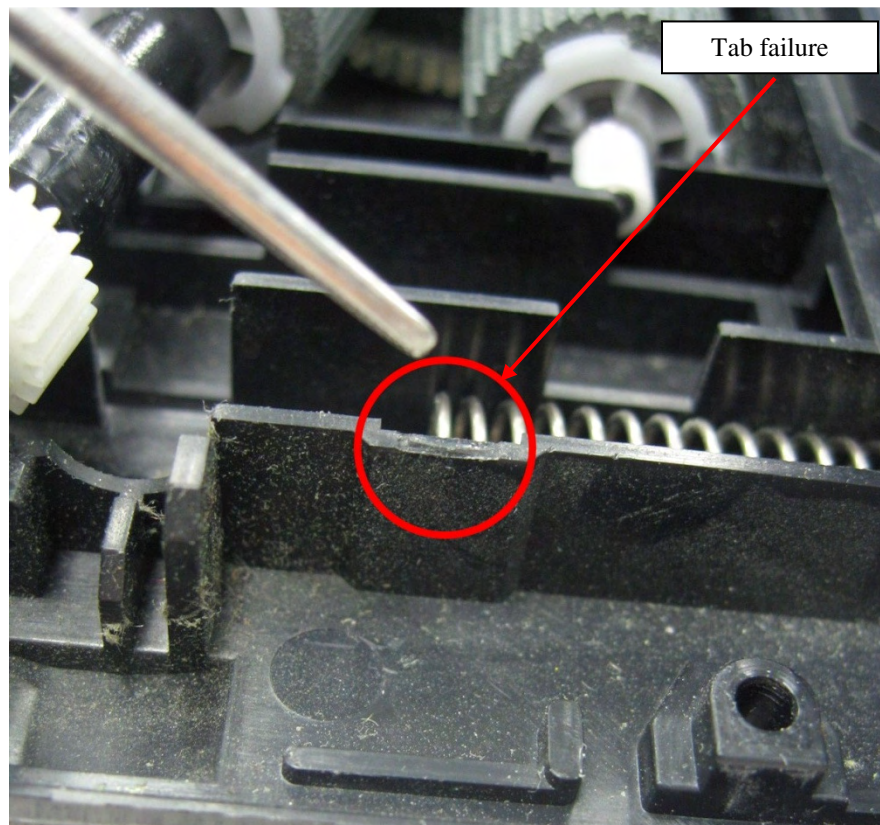
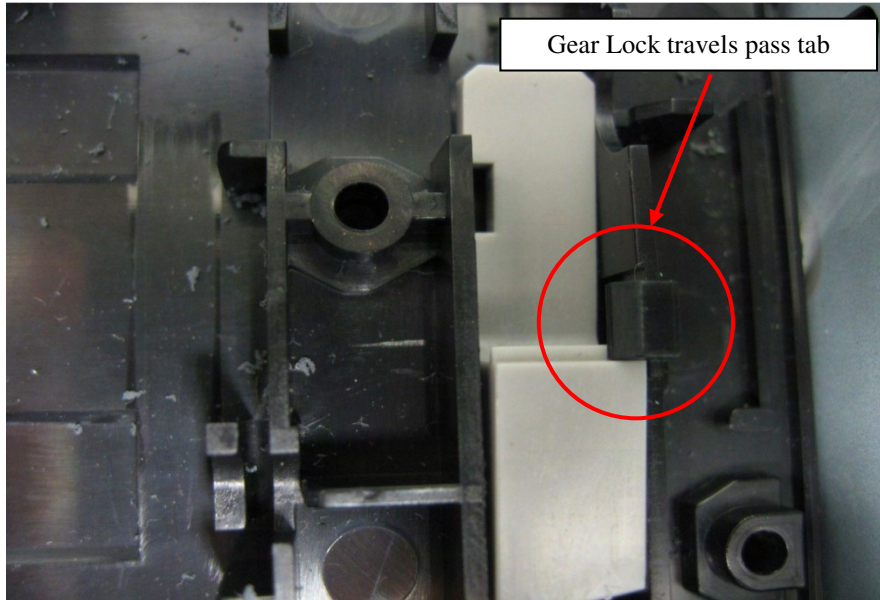
Customers reporting occasional Gear Lock Tab breakage on the F53 Cassettes. The Gear Lock/Tab assembly is located at the bottom of the F53 Cassette near the picker mechanism.



<u>INQUIRIES TO:</u>		DATE
Fujitsu Frontech North America		
Exchange: Sustaining Engineering	_____	_____
Mail: Fujitsu USA20, Sustaining Engineering	_____	_____
FAX: (949) 458-6257	_____	_____
Internet: SustainingEngineering@us.fujitsu.com	_____	_____
FTP: ftp://ftp.ftxs.fujitsu.com/Pos/PosSustaining/	_____	_____
	Author	
Original signature copies maintained by Sustaining Engineering.		

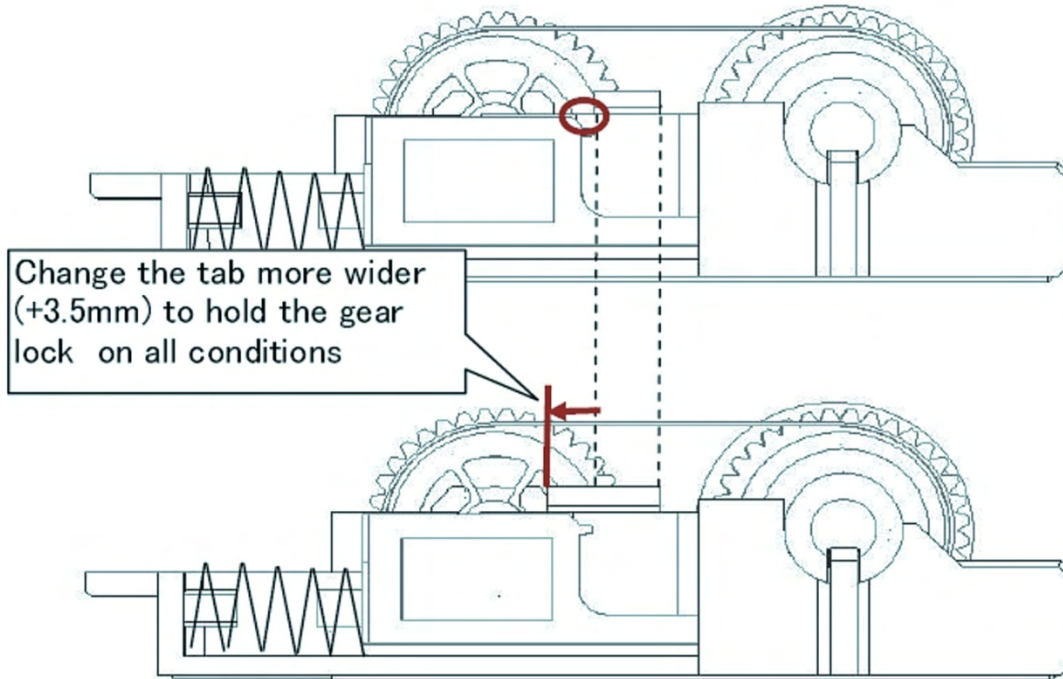
When Cassettes are pushed beyond the normal locked position; the Gear Lock can travel passed the restraint tab and compression torque can break the tab (model types KD03234-C500 and KD03234-C520).

 Please note that broken tabs do not impair cassette functionality.



Solution

Increase the width of the tab to prevent the Gear Lock from moving past the tab.



Affected P/N

Description	FTEC / FFNA #	Revision		Upgradable
		Old	new	
Cassette w/o Lock – Non-RoHS	KD02881-C500	Not applicable – product EOL		Yes
Cassette w/Lock – Non-RoHS	KD02881-C510	Not applicable – product EOL		Yes
Cassette w/o Lock	KD03234-C500 /12000006	Not applicable – product EOL		Yes
	KD03234-C520 /12000232	11G	12G	Yes
Cassette w/Lock	KD03234-C510	Not applicable – product EOL		Yes
	KD03234-C530	11G	12G	Yes

Impact

- **Production** Target cut-in date is August 2012.
- **Installed Units** None. Broken tabs have no impact on dispensing functionality.
- **Service Spares** None.
- **Repair Center** Any upgraded or refurb cassettes with broken Gear Lock Tabs should be repaired with the following spare parts.

Description	FFNA P/N	Applicable Cassette Models	
		EOL Model	Current Models
Pick Module Kit (C520 Cassette)	KD02881-K848	Yes	Yes
Bottom Frame Kit (C520 Cassette)	KD02881-K850	Yes	No