

Subject: iPad100-20 Main Board EOL

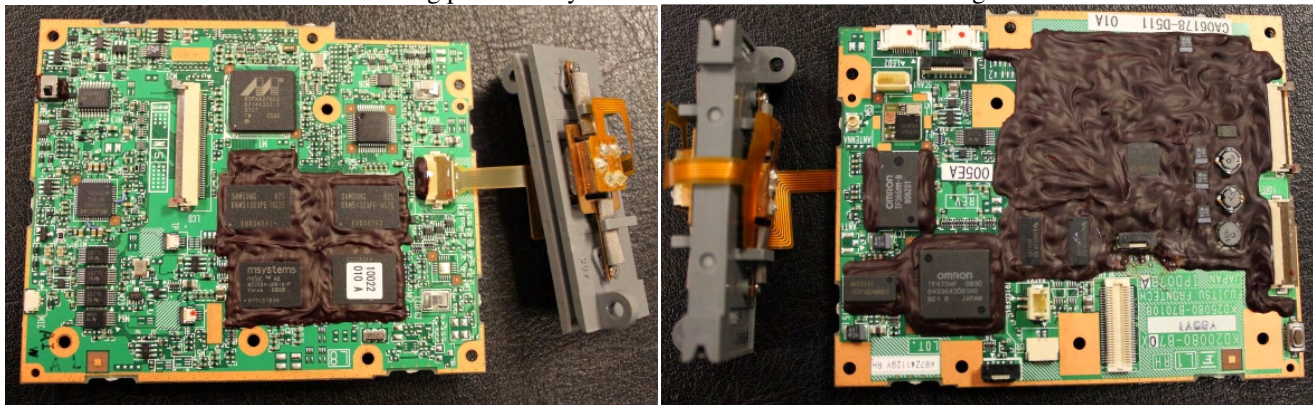
Overview

The Main Board within the iPad100-20 has gone EOL (critical components are no longer available). The impact is primarily for Repair Centers since repair of the iPad to this level is not typically performed in the field.

The iPad100-20 Main Board is replaced by a new board. This new board has the MSR reader permanently attached and has a security “conformal” coating in several locations (see below). When replacing the old Main Board within an iPad100-20 with this new board, the MSR will also be replaced. The removed MSR can be cleaned up and if still functional can be returned to spares stock (part number listed below for reference).

Part Number	Description	Notes
CA06178-D510	iPAD100-20 Main Board	Obsolete
CA06178-D511	iPAD100-20 Main Board, with MSR Attached	
CA06178-D009	iPAD100-20 MSR Assembly	Removed when -D511 installed

Illustrations of new Main Board showing permanently attached MSR and conformal coating on both sides.



Impact

- Production None.
- Installed Units None.
- Repair Center When stock of current Main Board (-D510) is exhausted, use new Main Board (-D511) and replace MSR also.
- Service Spares When stock of current Main Board (-D510) is exhausted, use new Main Board (-D511). Note, for repair center use only. Not field replaceable.

INQUIRIES TO:		DATE
Fujitsu Frontech North America		
Exchange:	Sustaining Engineering	_____
Mail:	Fujitsu USA20, Sustaining Engineering	_____
FAX:	(949) 458-6257	_____
Internet:	SustainingEngineering@us.fujitsu.com	_____
FTP:	ftp://ftp.ftxs.fujitsu.com/Pos/PosSustaining/	_____
Original signature copies maintained by Sustaining Engineering.		