



Subject: Genesis Door Alignments and PM Parts

Overview

Analysis of the call rate for the Genesis Chassis has shown that a large number of the chassis calls are due to issues with the Doors (both Upper and Lower). To improve this call rate and customer perception of the Genesis, a kit has been released that included many component parts that should be used when servicing a Genesis unit.

While not all parts/procedures will be required on all units, it is recommended that anyone servicing a Genesis unit have the below kit/parts available. During any service call (fit-on-fail or next call basis), the Genesis unit(s) should be verified as Level and Stable, and inspected and updated or repaired as needed. An installation/update document is included with each kit (also attached for reference).

11004489F		FIELD KIT, Front & Top Door Alignment, Genesis	Qty
	11004315	Grease, White Lithium, 1.5 oz, Loctite	1
	11002388	Loctite 242, Adhesive, 0.5ml capsule, Blue	1
	11002506	Pad, Alcohol Wipe, 70%, 1" X 2-1/2"	2
	11002577	Cushion, Top Cover Alignment, 50mm OAL, Genesis	2
	11002578	Cushion, Lower Door Alignment, 30mm OAL, Genesis	2
	11003241	Foot, Rubber, 0.671in. O.D. X 0.25in. HT X 0.155in. I.D., Colour: Black	1
	11003240	Screw, Pan Head, Phillips, Steel, Zinc-trivalent plated, M4X0.7 X 10mm	1
	11002163	Nut, Hex, KEPS, zinc-tri plated, M4	5
	11004313	Shim, Hinge, Front Door, Genesis	4
	11000663	Screw, Pan Head, Phillips, SEMS, zinc-tri plated, M5 X 0.8 X 12mm	4
	11001027	Screw, Pan Head, Phillips, SEMS, zinc-tri plated, M4 X 0.7 X 12mm	6
	11001025	Screw, Pan Head, Phillips, SEMS, zinc-tri plated, M4 X 0.7 X 8mm	6
	11004318	Washer, 5/16", 18-8 Stainless Steel Flat, 0.625"ODx0.344"IDx0.050"Thk	6
	D900000503	Document, Field Upgrade Instructions, Genesis Front Door Alignment	1

It is also recommended that all Genesis units have a Preventive Maintenance performed semiannually which would include these door inspections/updates. The following PSB's should also be referenced:

PSB-11-023	Genesis Door Rubber Strips
PSB-09-048	New Genesis Bumper Kits
PSB-09-037	Genesis Top Door Part Numbers
PSB-09-016	Genesis Door Locking Latch Bracket
PSB-09-014	Genesis Rubber Door Cushions
PSB-09-004	Genesis Top Door Stopper
PSB-08-051	Preventive Maintenance
PSB-08-029	Genesis Top/Lower Door Bumper Cushions

Impact

- Production None.
- Installed Units Fit-On-Fail or As Needed only.
 - Time to install, varies by unit, 1-15 minutes depending on the updates needed.
- Repair Center None.
- Service Spares Kits and parts inventory should be stocked as needed.

INQUIRIES TO:		DATE
Fujitsu Frontech North America		
Exchange:	Sustaining Engineering	_____
Mail:	Fujitsu USA20, Sustaining Engineering	_____
FAX:	(949) 458-6257	_____
Internet:	SustainingEngineering@us.fujitsu.com	_____
FTP:	ftp://ftp.ftxs.fujitsu.com/Pos/PosSustaining/	_____
Original signature copies maintained by Sustaining Engineering.		



Genesis Door Alignment Upgrade

This is document number D900000503, Version 1.0.

This document describes how to perform corrective re-alignment of the U-Scan Genesis Customer Station doors, with related maintenance tasks. Each section describes the maintenance tasks required to correct a specific problem with the doors.

Required Tools:

- Phillips #2 screwdriver
- pliers
- optional: cellophane tape

Components

Components (Kit: 11004489F)	Qty.	Part No.
Grease, White Lithium, 1.5 oz, Loctite	1	11004315
LOCTITE 242, Adhesive, 0.5ml capsule, Blue	1	11002388
PAD, Alcohol Wipe, 70%, 1" X 2-1/2"	2	11002506
CUSHION, Top Cover Alignment, 50mm OAL, Genesis	2	11002577
CUSHION, Lower Door Alignment, 30mm OAL, Genesis	2	11002578
FOOT, Rubber, 0.671in. O.D. X 0.25in. HT X 0.155in. I.D., Black	1	11003241
SCREW, Pan Head, Phillips, ISO7045, M4X0.7 X 10mm	1	11003240
NUT, Hex, KEPS, zinc tri-plated, M4	5	11002163
SHIM, Hinge, Front Door, Genesis	4	11004313
SCREW, Pan Head, Phillips, SEMS, zinc tri-plated, M5 X 0.8 X 12mm	4	11000663
SCREW, Pan Head, Phillips, SEMS, zinc tri-plated, M4 X 0.7 X 12mm	6	11001027
SCREW, Pan Head, Phillips, SEMS, zinc tri-plated, M4 X 0.7 X 8mm	6	11001025
WASHER, 5/16", 18-8 Stainless Steel Flat, 0.625" O.D., 0.344" I.D., 0.050" THK	6	11004318

NOTE: *For safety reasons, shut down and power off the station before performing any of the following tasks.*

Adjust the Front Door

If the front door is sagging and has become difficult to close, the upgrade kit contains components to adjust it, as explained below.

Slight misalignment

1. To correct a slight mis-alignment, install an appropriate number of supplied shims (11004313) behind the lower hinge to tilt the door upwards.



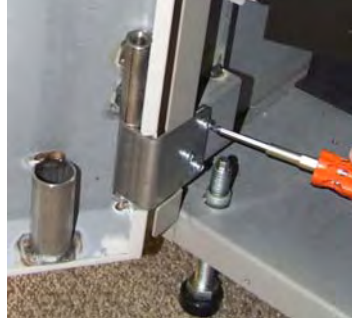
2. Unlock and open the lower door of the station. Before installing the shims, remove the bottom hinge pin:
 - a. Using pliers, remove the retaining ring at the bottom of the pin.



- b. Pull the pin up and off.
3. Move the drain hose out of the way. Pull the hose up and out of its connector on the bottom of the door.



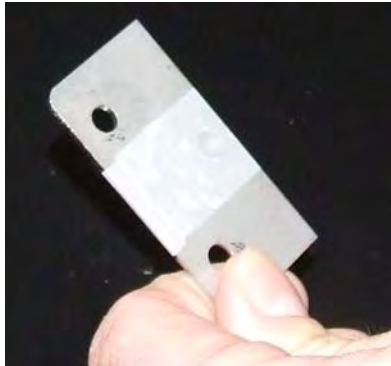
4. While supporting the door to relieve strain on the screws, remove the three screws that secure the hinge to the casing.



5. Install the shims behind the hinge.



6. If you find it difficult to keep the shims aligned, you can optionally tape them together with cellophane tape.



7. Re-install the screws loosely.
8. Re-install the hinge pin, retaining ring, and drain hose.

9. Adjust the door upward and tighten the screws. While tightening the screws, test the door alignment (check that the door closes and locks properly). If you removed the drain hose earlier, be sure to re-install it in the door.

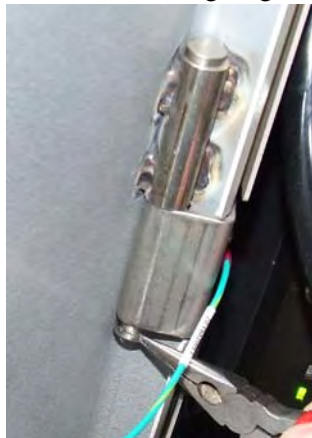


Greater misalignment

1. If necessary, to correct a greater misalignment, install stainless steel washers (11004318) on each hinge pin to raise the entire door evenly. Each washer will lift the door by 0.050 in.



2. Install the same number of washers on both pins, adjusting each pin one at a time.
3. Remove the retaining ring at the bottom of each pin.



4. Pull the pin up, then insert the washer(s) so that the pin will pass through the washer(s) when it is lowered back into the hinge.



5. Test the door alignment (check that the door closes and locks properly).
6. Re-insert the retaining rings you removed earlier.

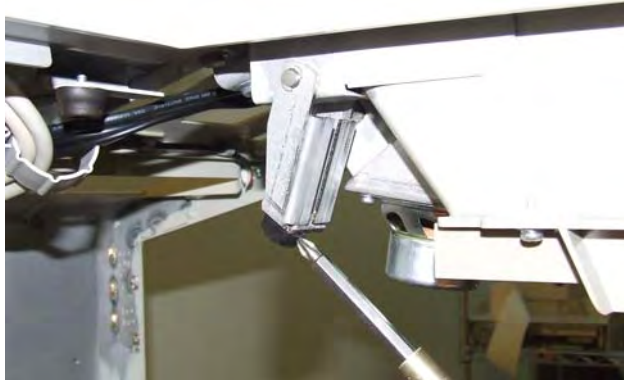


7. Close and lock the lower door.

Replace the Top Cover Handle Stopper

If the rubber stopper (foot) is missing from the top cover release mechanism, install the supplied rubber stopper (11003241) using an M4 screw and thread locker.

1. Unlock and open the upper door of the station.
2. Verify whether or not the foot is installed properly at the location pointed to by the screwdriver below.



- a. If the foot is missing or damaged, replace it with the foot, screw, and nut found in the kit.



- b. Install the foot. Apply Loctite to the screw and secure the assembly in place.



3. Close and lock the lower door.
4. Please refer to Product Support Bulletin PSB-09-004, which is related to the top cover stopper.

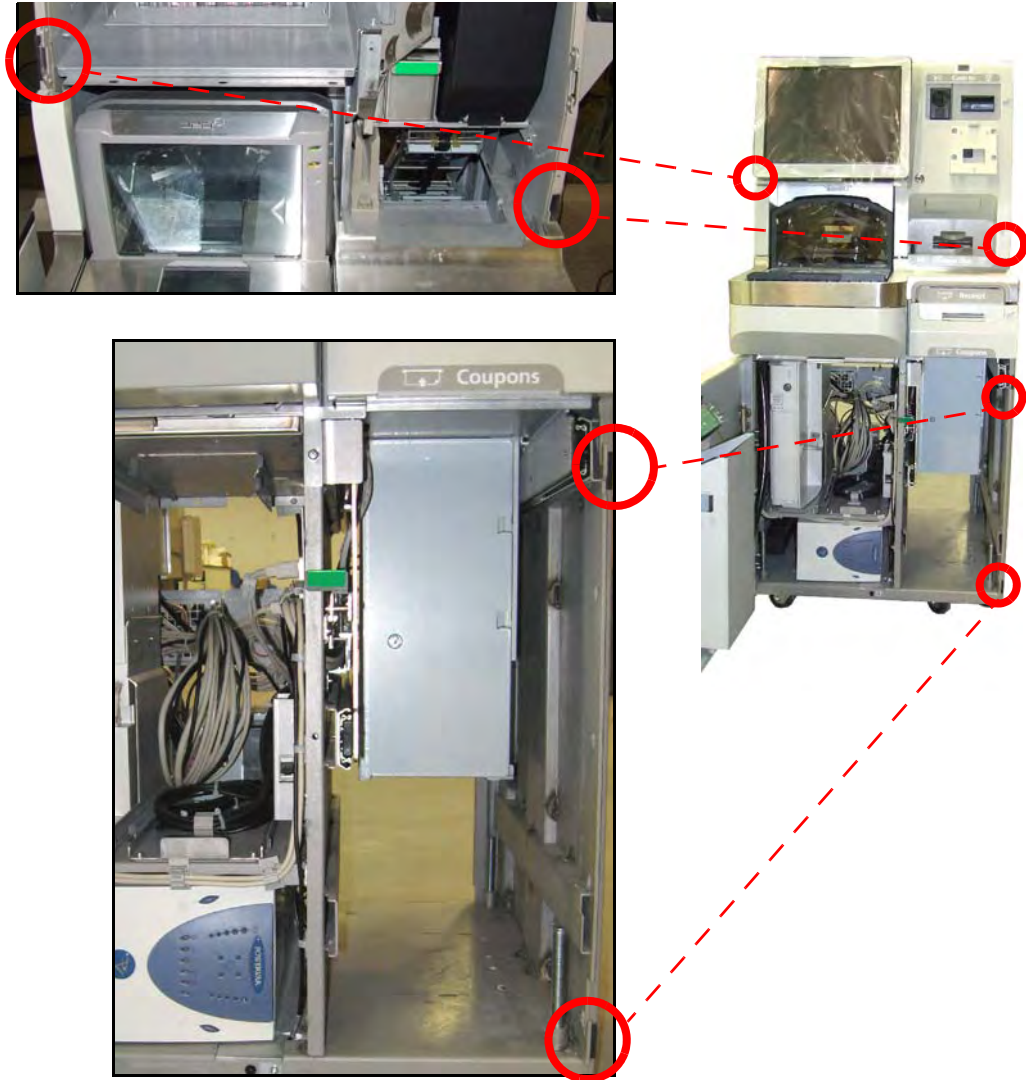
Replace the Rubber Door Cushions

If the rubber strips (cushions) are not present, or if they have begun to detach from the door frame, replace them with the supplied rubber cushions (upper door: 11002577 / lower door: 11002578).

1. Unlock and open the lower door of the station.
2. Clean the surfaces with an alcohol wipe and let dry before applying the rubber cushions. Be sure to remove any residual adhesive.



3. Press each cushion (push the entire cushion) against the frame and hold for one minute.



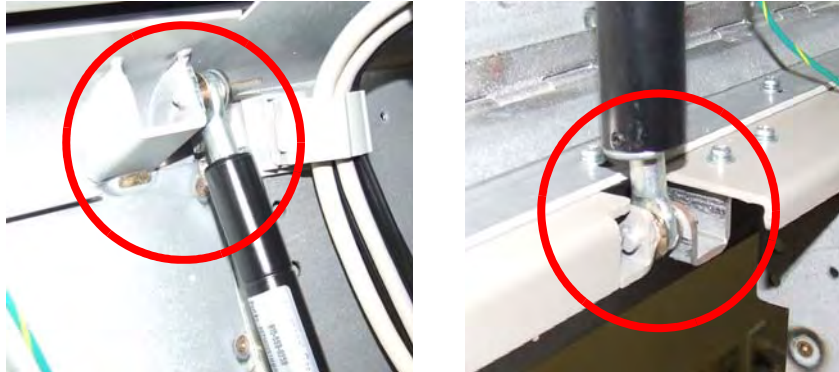
4. Close and lock the lower door. Please refer to Product Support Bulletins PSB-09-014 and PSB-11-023, which are related to the rubber door cushions.

Lubricate Hinges and Lock Mechanisms

The upgrade kit contains a tube of white lithium grease. Apply a small amount of grease to the following locations:

Upper compartment

1. Unlock and open the upper door of the station to gain access.
2. Lubricate the piston hinges at the top and bottom.



3. Lubricate the top cover release mechanism (foot bracket pin).



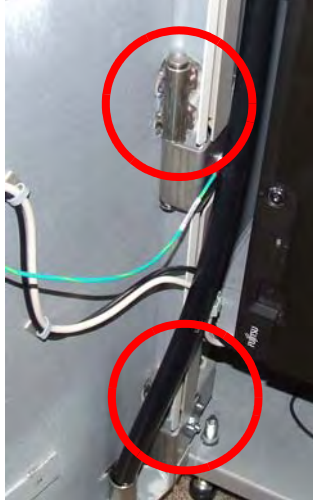
4. Lubricate the main hinge.



5. Close and lock the upper door.

Lower compartment

1. Unlock and open the lower door of the station to gain access.
2. Lubricate the lower door hinges.



3. To access the lower door lock mechanism, remove the coupon box.
4. Lubricate the lower door lock mechanism.



5. Lubricate the lower door's vertical locking mechanism (bar).



6. Replace the coupon box. Ensure that you have replaced the drain hose and hinge pin retaining rings if you removed them earlier.
7. Close and lock the lower door.