

Technical Bulletin

ISS45: V7.1.0.0 and XP Pro Installation

ISS45-TECH-05:39
September 6, 2005

Please see the attached document explaining the installation, setup, operation and current limitations of XP Pro as a platform for ISS45 7.1.0.0 (release level -080).

To Your Success,

Speros

Speros Voss
ISS45 Technical Specialist

This document and information are supplied to StoreNext Retail Technologies personnel and third parties to assist them in doing business with StoreNext. They are not to be used or distributed for any other purpose.

StoreNext Retail Technologies LLC endeavors to ensure that the information in this document is correct and fairly stated, but does not accept liability for any error or omission.

V7.1.0.0 and XP Pro Installation

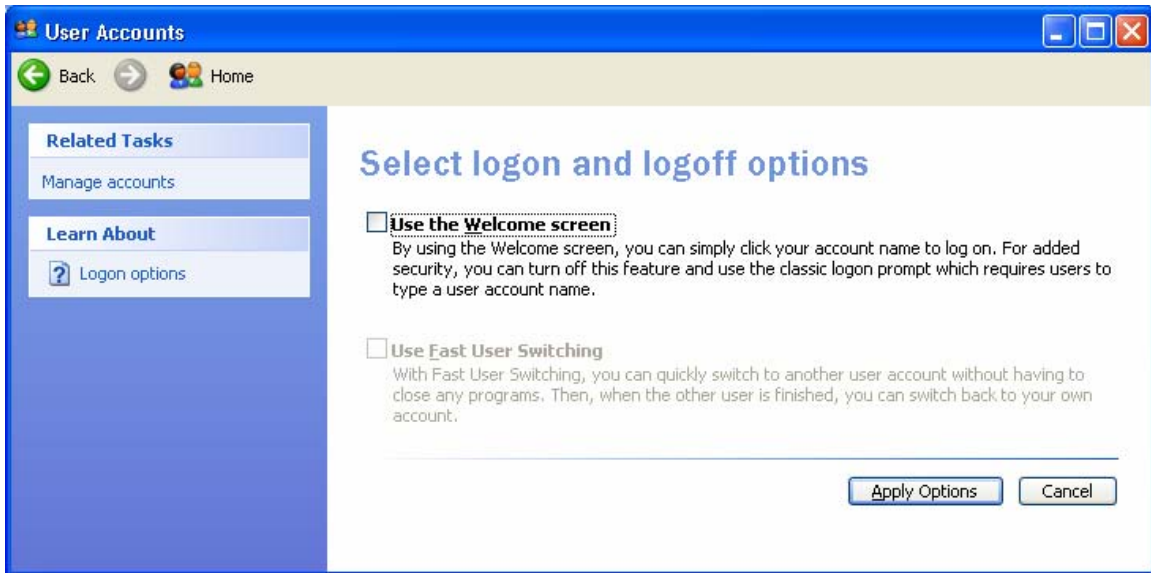
To run ISS45 on a server with XP Pro as the operating system two (2) items are required:
#1 - The changes listed below must be made to the system and #2 – After installing
ISS45 V7.1.0.0 also install the Back Office patch V7.1.0.0_080. Previous versions of
ISS45 have not been certified to run with XP Pro.

Note: **Only use Windows XP Pro** and not XP Pro X64 as Microsoft warns that
“Windows XP Pro X64 doesn't run 16-bit applications, including any 32-bit programs
that rely on a 16-bit installer”.

XP Pro Setup Instructions-

1) Change to the classic logon (Control ATL DEL) –

- A) Click on START, CONTROL PANEL, USER ACCOUNTS, under PICK A TASK
select “CHANGE THE WAY THE USERS LOG ON AND OFF”
- B) If a window opens that says “Fast User Switching can not.....” select CANCEL
- C) Uncheck the box next to “Use the Welcome screen”
- D) If you don't do this you won't see administrator on the XP screen and can't use
it. This gives you the old CTRL+ALT+DEL logon



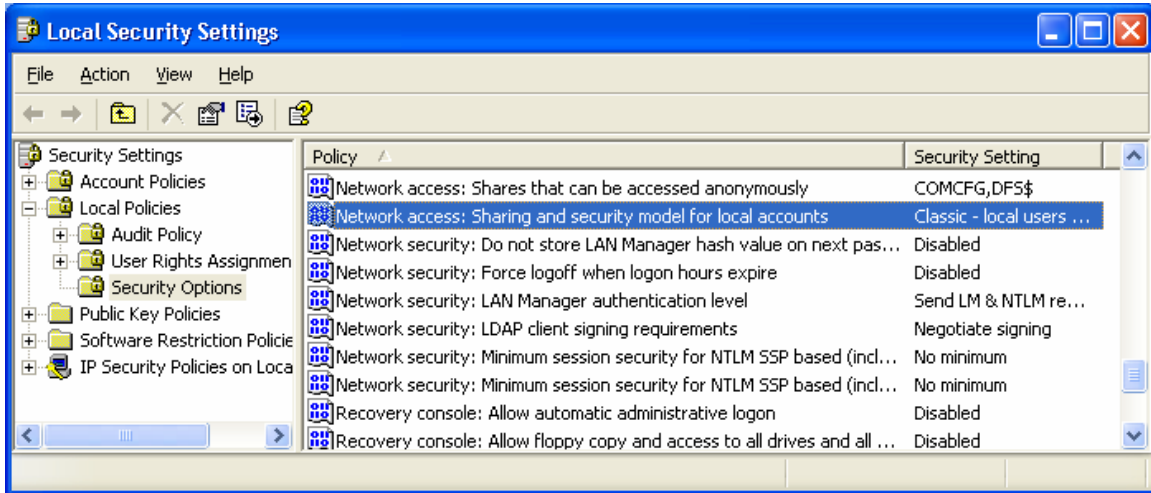
2) Sharing in XP defaults to a guest share. Change this to be like the old sharing –

- A) Click on START, CONTROL PANEL, PERFORMANCE AND MAINTENANCE,
ADMINISTRATIVE TOOLS, LOCAL SECURITY POLICY, LOCAL POLICIES,
SECURITY OPTIONS

V7.1.0.0 and XP Pro Installation

B) Right click on “Network access: Sharing and security model for local accounts” and then PROPERTIES, select “Change to Classic - local users authenticate as themselves” from the drop-down menu

C) Save changes and exit



3) Turn off the firewall after installing **XP SP2** –

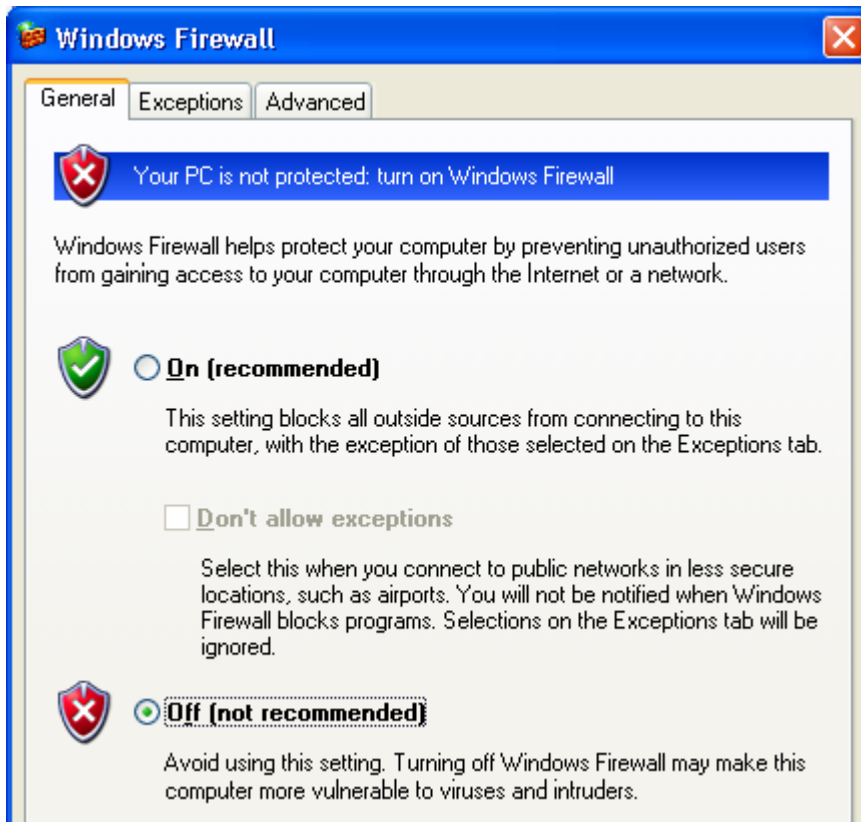
A) Click START, CONTROL PANEL, WINDOWS SECURITY CENTER, WINDOWS FIREWALL

B) Click on the GENERAL tab

C) Select OFF

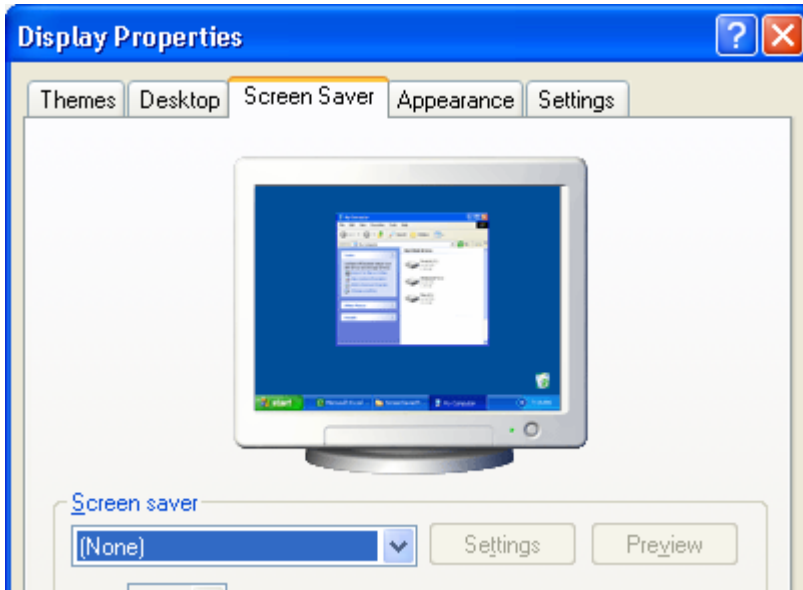
D) Click on OK and exit any open screens

V7.1.0.0 and XP Pro Installation

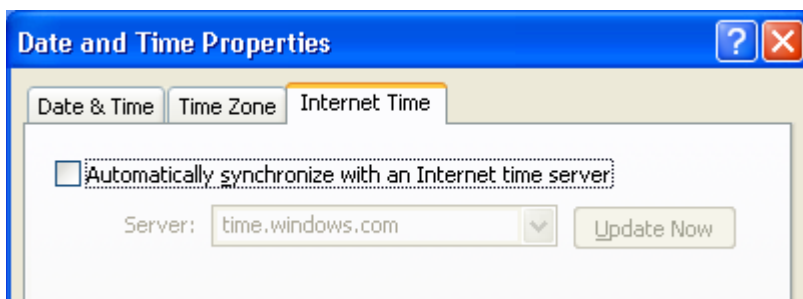


- 4) Turn off the default screen saver for XP Pro –
 - A) Click START, CONTROL PANEL, APPEARANCE AND THEMES, DISPLAY
 - B) Click the SCREEN SAVER tab
 - C) At the SCREEN SAVER box click on the down arrow to access the dropdown Menu
 - D) Select NONE and click APPLY to save the settings
 - E) Exit any open screens

V7.1.0.0 and XP Pro Installation



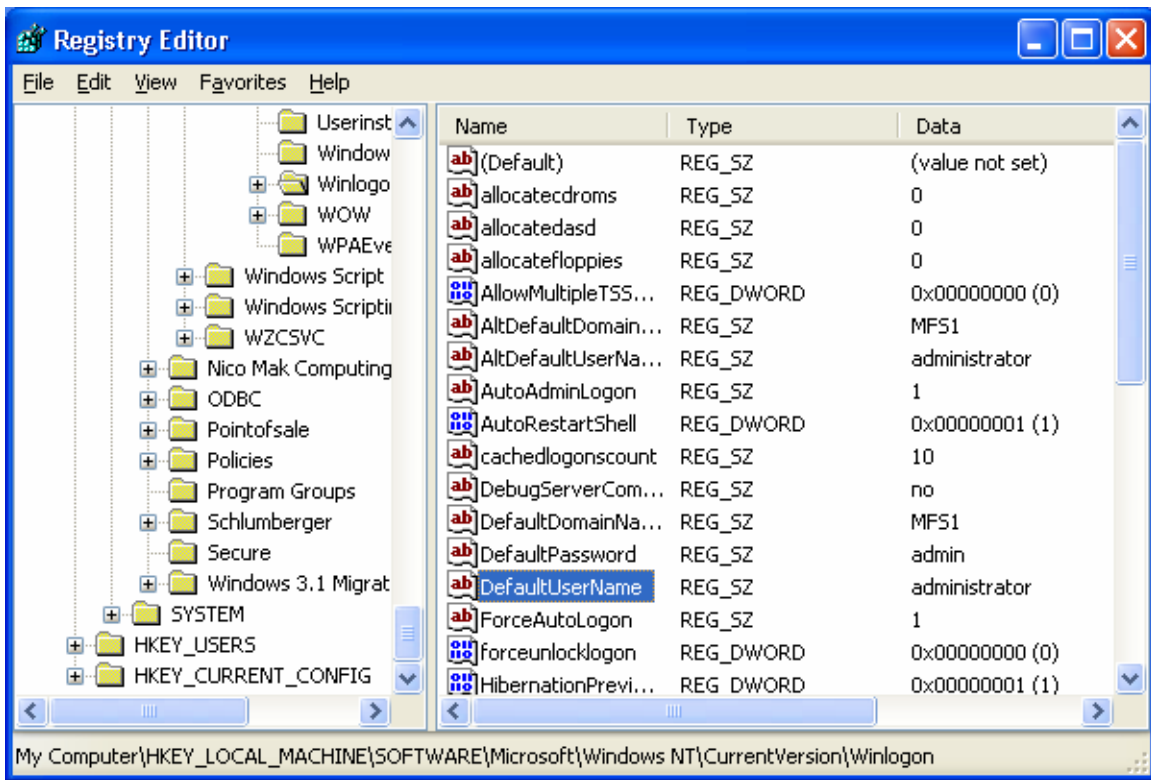
- 5) Turn off the default “Automatic Time Synchronizing” –
- A) At the desktop right click on the systray (at the far right side of the task bar)
 - B) Select “Adjust Date/Time”
 - C) Select the “Internet Time” tab
 - D) Un-check the box next to “Automatically synchronized with an Internet time server”
 - E) Apply the change and exit



- 6) Enable Automatic Logon –
- A) Click on START, click on RUN, type REGEDIT and then click OK
 - B) Go to **HKEY_LOCAL_MACHINE\SOFTWARE\Microsoft\WindowsNT\CurrentVersion\WinLogon**
 - C) Right click on **DefaultUserName**, select MODIFY, type **Administrator**

V7.1.0.0 and XP Pro Installation

- D) Click on EDIT, click NEW, click STRING VALUE
- E) Type **DefaultPassword** as the value name and depress ENTER
- F) Right click on DefaultPassword, select MODIFY, type your password in the VALUE DATA box
- G) Click on EDIT, click NEW, click STRING VALUE
- H) Type **AutoAdminLogon** as the value name and depress ENTER
- I) Right click on AutoAdminLogon, select MODIFY, enter **1** in the VALUE DATA Box
- J) Click on EDIT, click NEW, click STRING VALUE
- H) Type **ForceAutoLogon** as the value name and depress ENTER
- I) Right click on ForceAutoLogon, select MODIFY, enter **1** in the VALUE DATA Box
- K) Exit REGEDIT and reboot the server



V7.1.0.0 and XP Pro Installation

7) Shared printer setup –

A) On any MFS or LFS servers that are using a shared printer click on START and then click on RUN

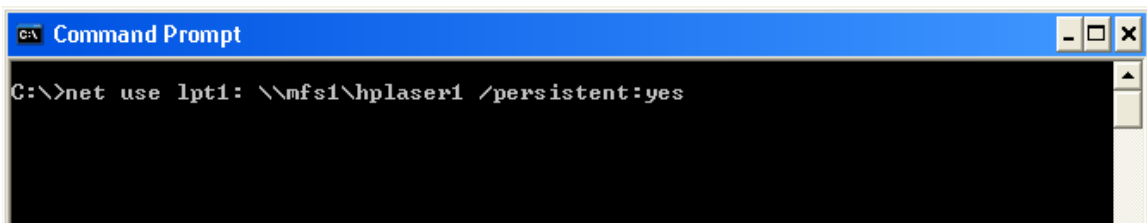
B) Type CMD and then click on OK

C) At the command prompt type the following –

Net use lpt1: \\<server>\<shared_printer_name> /persistent:yes

For example, if the printer is physically located on MFS1 and the share name is LASER1 this line would be typed as listed below on MFS2 and any LFS:

Net use lpt1: \\mfs1\laser1 /persistent:yes



```
Command Prompt
C:\>net use lpt1: \\mfs1\hplaser1 /persistent:yes
```

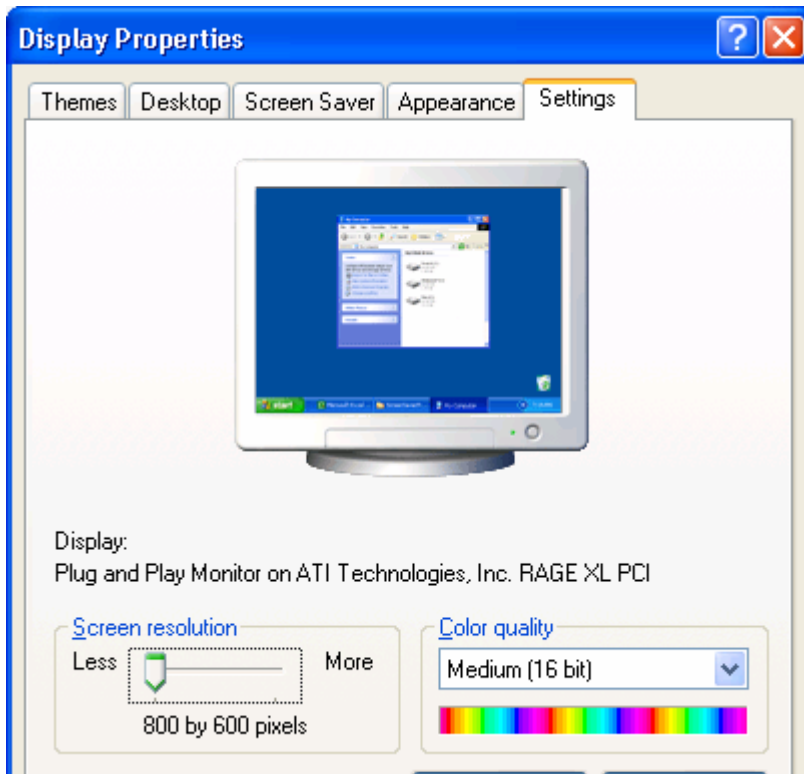
8) Set the display properties –

A) Click START, CONTROL PANEL, APPEARANCE AND THEMES, DISPLAY

B) Click the SETTINGS tab

C) Ensure hat the screen resolution is 800X600 pixels and the color quality is Medium (16 bit)

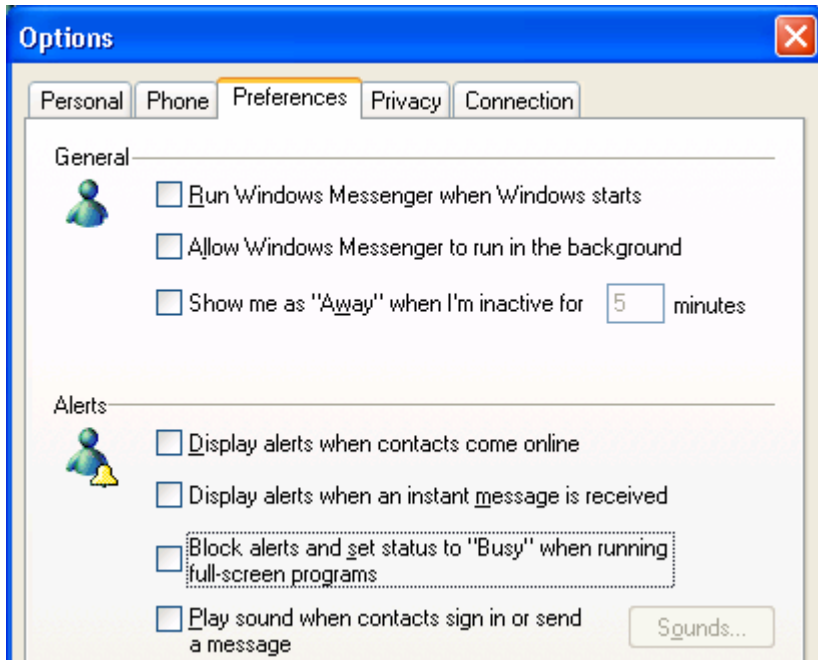
V7.1.0.0 and XP Pro Installation



9) Turn off Windows Messenger –

- A) Double click on the Windows Messenger icon in the lower right corner of the Screen next to the time
- B) Click on TOOLS to get a dropdown and then click on OPTIONS
- C) Click on the PREFERENCES tab
- D) Uncheck all boxes in both the GENERAL and ALERTS sections
- E) Click OK at the bottom of the screen to save the changes
- F) Exit any open screens

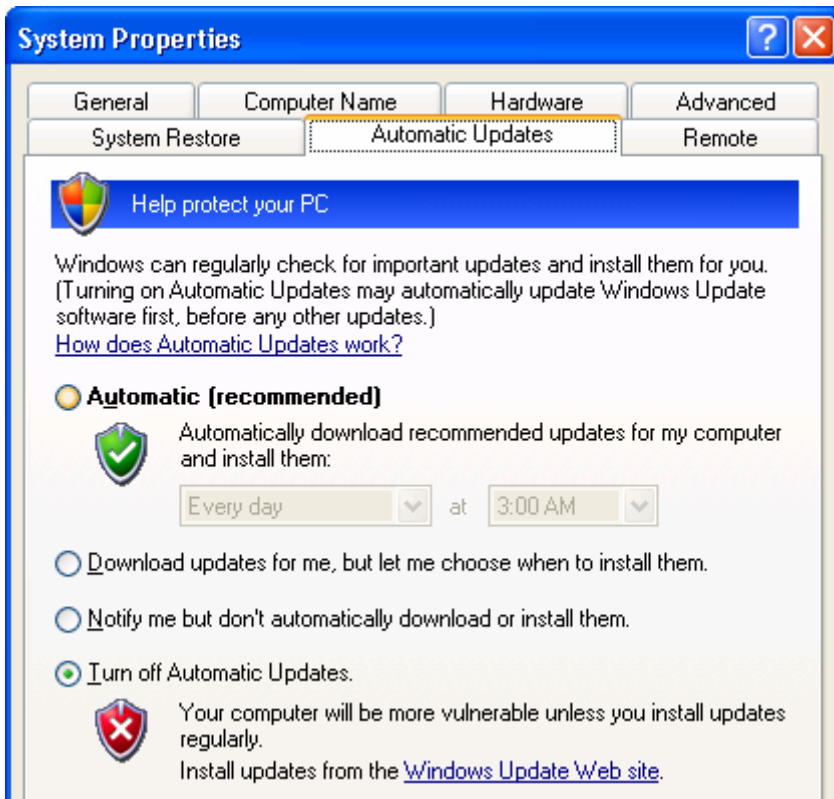
V7.1.0.0 and XP Pro Installation



10) Optional: Turn off Windows automatic updating –

- A) Go to START, CONTROL PANEL, PERFORMANCE AND MAINTENANCE, SYSTEM
- B) Click on the “Automatic Updates” tab
- C) Uncheck the box next to “Keep my computer up to date.....”
- D) Apply the change, click on OK and exit

V7.1.0.0 and XP Pro Installation



- 11) If you have installed ISS45 V7.1.0.0_070 and do NOT install patch V7.1.0.0_080 then you must manually modify the following batch files EOD-NT.BAT, SRVSTART.BAT and SRVSTOP.BAT by adding a REM statement before the following lines on BOTH servers (MFS1 and MFS2):

File EOD-NT.BAT:

```
REM copy pcm.bat flag\Finshp2r.flg
REM printeod Wait 5 seconds for Pkg2Rema to finish work >> log\e-of-day.log
REM wait 5 "Wait for Pkg2Rema"
```

```
REM echo Call to TFServer to run its EOD process | pcmlog32 /macro2
REM TFServer /EOD
REM cls
```

```
REM echo Call to TFServer to run its Zero process | pcmlog32 /macro2
REM TFServer /ZERO
REM cls
```

```
REM echo Restart plu2eldt | pcmlog32 /macro2
REM rsmrun plu2eldt /auto
```

```
REM echo call Pkg2Rema in Zero mode | pcmlog32 /macro2
REM Pkg2Rema /Zero
```

V7.1.0.0 and XP Pro Installation

REM echo restart Pkg2Rema in service mode | pcmlog32 /macro2
REM rsmrun Pkg2Rema /Service

REM echo Call to TFServer to run in service mode | pcmlog32 /macro2
REM rsmrun TFServer /Service

File SRVSTART.BAT:

REM start /MIN Pkg2Rema /Service

REM start TFServer /Service

File SRVSTOP.BAT:

REM copy pcm.bat flag\EXITTF.FLG
REM copy pcm.bat flag\Exitp2r.flg

Exceptions –

The following applications/software were **NOT** included in the scope of this first round of testing but may be included at some later date:

- A) Any V7 release below V7.1.0.0_070
- B) Any V8 release
- C) Retalix RBO
- D) StoreNext Connected Services
- E) Any release of anti-virus software
- F) Any release of remote desktop software
- G) Any third party item file maintenance
- H) Any third party accounting package
- I) Any LFS running XP Pro with V7.1.0.0
- J) Pocket Office (iPad)
- K) U-Scan
- L) Trickle Feed Server