

## Technical Bulletin

### ISS45 V8 SQL Workgroup Installation

ISS45-TECH-06:25 Issue 2

October 30, 2006

Use the following procedure to install SQL Workgroup with ISS45 V8. SQL Workgroup is compatible with versions 8.1.1.1-050 and later.

If you installing SQL Workgroup on an XP Pro system you *must* perform the change in Appendix 'A' below before continuing with this installation process.

#### 1. SQL Workgroup Installation

- 1.1. Insert SQL Workgroup CD in CD-ROM Drive (autorun)
- 1.2. At *SQL Workgroup* screen click *SQL Server 2000 Components*
- 1.3. At next screen click *INSTALL DATABASE SERVER* (wait 30 sec)
- 1.4. At Welcome click NEXT
- 1.5. At Computer Name put • Local Computer, click NEXT
- 1.6. At Installation Selection put • Create a new instance..., click NEXT
- 1.7. At User Information key in Name and Company, click NEXT
- 1.8. At Software License Agreement click YES to confirm
- 1.9. At Installation Definition put • Server and Client Tools, click NEXT
- 1.10. At Instance Name put ✓ Default, click NEXT
- 1.11. At Setup Type, put • on Custom Install
- 1.12. Change destination folders for both Program and Data files:
- 1.13. At **EACH** path click Browse, change C:\PROG... to D:\, click OK  
**Note: This process creates the directory D:\MSSQL**
- 1.14. then at *Setup Type* click *NEXT*
- 1.15. At *Select Components* click *NEXT*
- 1.16. At *Services Accounts* put • Customize The Settings For Each Service
  - 1.16.1. In *Services* put • SQL Server
    - 1.16.1.1. In *Service Settings* put • Use a Domain User account
    - 1.16.1.2. In Username: key **Administrator** (or accept default)
    - 1.16.1.3. In Password: key **(this is your administrators password)**
    - 1.16.1.4. In Domain: key **(server name)** (or accept default)
    - 1.16.1.5. Put ✓ Auto Start Service
  - 1.16.2. In *Services* put • SQL Server Agent
    - 1.16.2.1. In *Service Settings* put • Use a Domain User account
    - 1.16.2.2. In Username: key **Administrator** (or accept default)
    - 1.16.2.3. In Password: key **(this is your administrators password)**
    - 1.16.2.4. In Domain: key **(server name)** (or accept default)
    - 1.16.2.5. Put ✓ Auto Start Service, click *NEXT*, at *Setup* click *OK*
  - 1.16.3. Click NEXT
- 1.17. At *Authentication Mode* put • Mixed Mode, do NOT enter any password, leave it blank and then click *NEXT*

This document and information are supplied to StoreNext Retail Technologies personnel and third parties to assist them in doing business with StoreNext. They are not to be used or distributed for any other purpose.

StoreNext Retail Technologies LLC endeavors to ensure that the information in this document is correct and fairly stated, but does not accept liability for any error or omission.

- 1.18 At the warning for the blank password click on *YES*
- 1.19 At *Collation Settings* put • SQL Collations
- 1.20 Highlight: **Binary order, for use with the 850(Multilingual) Character set**
- 1.21 Click *NEXT*
- 1.22 At *Network Libraries* remove ✓ from TCP/IP Sockets, then click *NEXT*
- 1.23 At *Error Reporting* do not select anything and click on *OK*
- 1.24 At *Start Copying Files* click *NEXT*
- 1.25 Installs programs (8-9 min)
- 1.26 Configures selections ( 2-3 min)
- 1.27 At *Setup Complete* click *FINISH* to exit
- 1.28 Remove CD then at Desktop reboot server

## 2 Register SQL Server

- 2.1 START / All PROGRAMS / Microsoft SQL SERVER / ENTERPRISE MANAGER
- 2.2 In the left window, open Microsoft *SQL Servers*
- 2.3 In the left window, left click on SQL Server Group
- 2.4 In the right window, right click on the SQL Server (default name Local)
- 2.5 Edit SQL Server registration properties
- 2.6 On General screen, check the box for Use SQL Server authentication
- 2.7 Login Name: key **sa**, leave password blank click *OK*
- Note: If you get: WARNING – The client and server codepages... click OK**
- 2.8 Exit Enterprise Manager
- 2.9 Restart the Computer

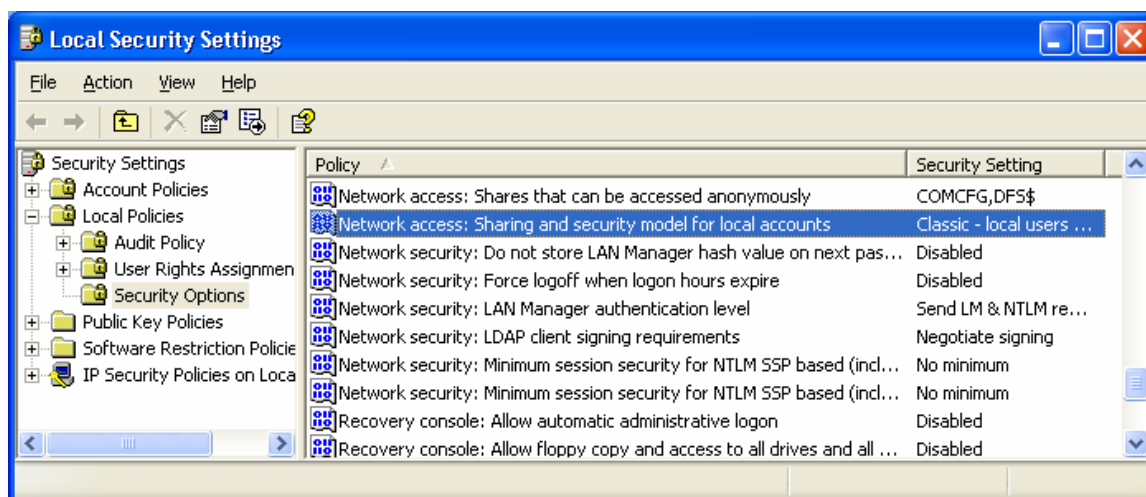
[Continued on next page]



## Appendix A

How to change the sharing in XP defaults to a guest share. This change is made to make the sharing to work like the old sharing –

- A) Click on START, CONTROL PANEL, PERFORMANCE AND MAINTENANCE, ADMINISTRATIVE TOOLS, LOCAL SECURITY POLICY, LOCAL POLICIES, SECURITY OPTIONS
- B) Right click on “Network access: Sharing and security model for local accounts” and then PROPERTIES, select “Change to Classic - local users authenticate as themselves” from the drop-down menu
- C) Save changes and exit



To Your Success,

*Speros*  
Speros Voss  
Technical Specialist

