

Technical Bulletin

92U Keyboard Losing Keystrokes with AVI Files

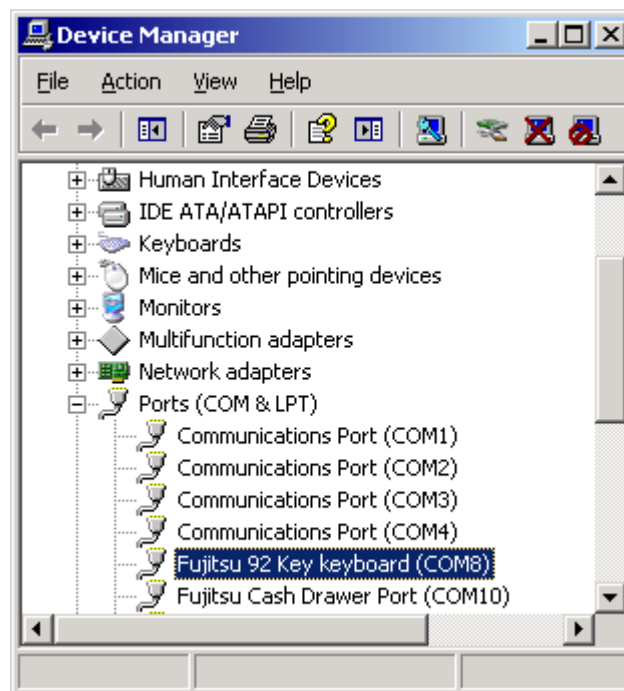
ISS45-TECH-07:17
September 30, 2009

To function correctly, the Fujitsu 92U keyboard needs the change below when connected via USB and running an AVI file on the shopper screen. If this change is not made, keystrokes can be lost and the system may seem slow to respond.

SOLUTION

The default value of 16 in the BM Options Latency Timer needs to be changed to a 4. This is accomplished by setting it in the following screens.

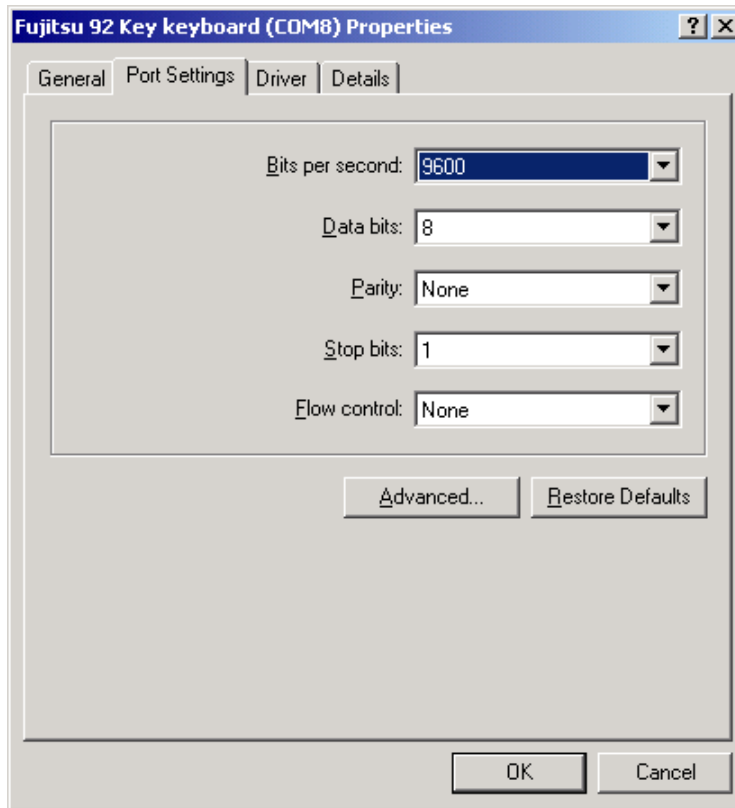
- Open Device Manager and click on Ports(COM & LPT)
- Double click the Fujitsu 92 Key keyboard (COMx) to bring up the Properties page. Note: The COM port number on your POST may be different than the example below.



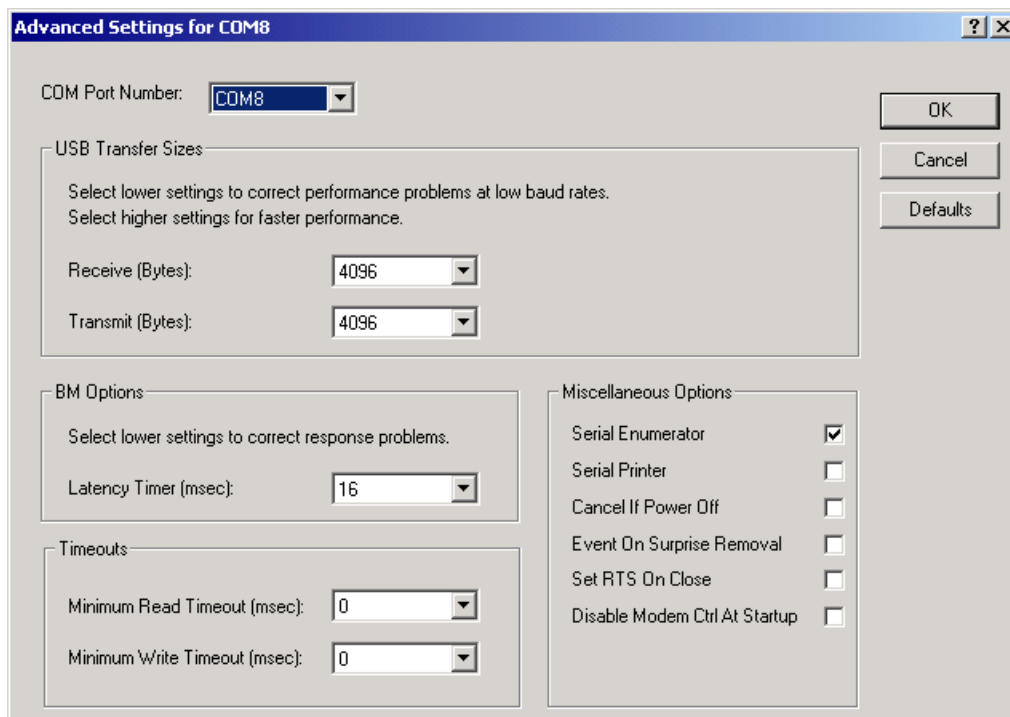
This document and information are supplied to StoreNext Retail Technologies personnel and third parties to assist them in doing business with StoreNext. They are not to be used or distributed for any other purpose.

StoreNext Retail Technologies LLC endeavors to ensure that the information in this document is correct and fairly stated, but does not accept liability for any error or omission.

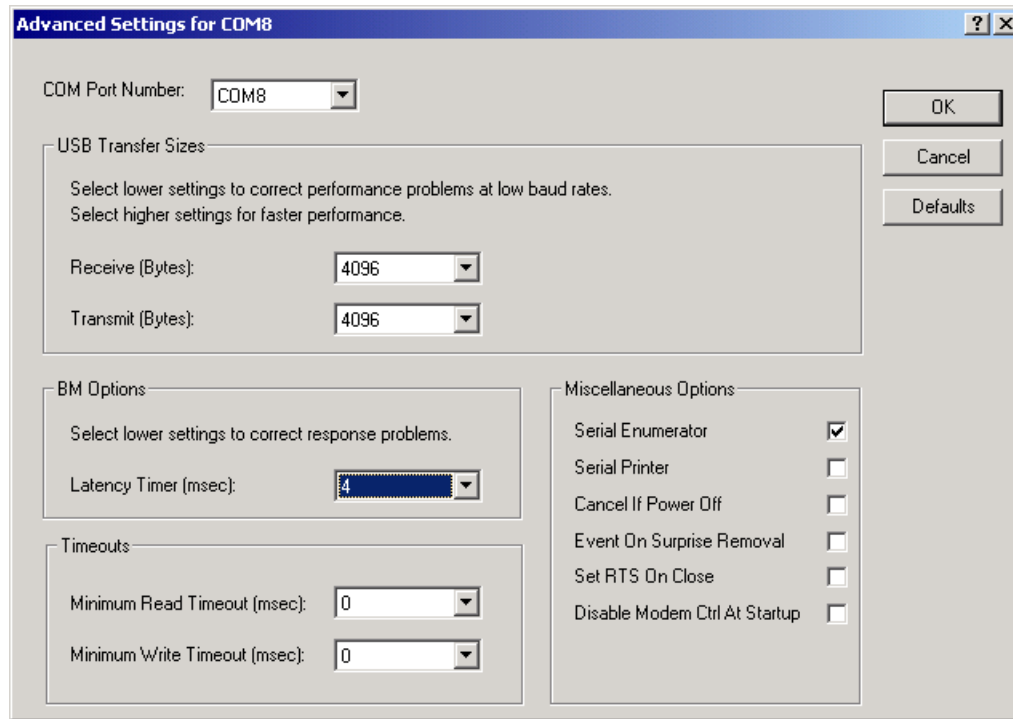
- Select the Port Settings tab on the properties page.



- Click on the Advanced button to open the Advanced settings screen.



- Click on the Latency Timer (msec): and change the default value from 16 to a 4.



- Click OK to update and close the Advanced settings window.
- Click OK to close the Properties window.
- Restart the POST to use the new value selected.

